

CLINTON CLOSURE DETOURS

(PRELIMINARY - SUBJECT TO CHANGE)



Southbound Hwy 99 off ramp at Ashlan Ave to Clinton Ave

Detour
 Southbound Hwy 99 off ramp at Ashlan Ave to Clinton Ave:
 Exit Southbound Hwy 99 at Ashlan, proceed south Parkway Dr to Brawley Ave south to Clinton Ave

Detour
 Southbound Hwy 99 off ramp at Shields Ave to Clinton Ave:
 Exit Southbound Hwy 99 at Shields, proceed south on Marks Ave to Clinton Ave

Detour
 Southbound Hwy 99 on ramp at Shields Ave from Clinton Ave:
 Clinton Ave to Marks Ave north. Proceed north on Marks Ave to Southbound Hwy 99.

Detour
 Northbound Hwy 99 on ramp at Ashlan from Clinton Ave:
 Take Weber Ave north, proceed to Valentine Ave north. Take Ashlan Ave west to northbound Hwy 99 onramp.

Detour
 Northbound Hwy 99 onramp from Clinton Ave east of closure:
 Take West Avenue south to McKinley Ave. Proceed west on McKinley to Golden State Blvd. Proceed north on Golden State to Northbound Hwy 99 on ramp.

Detour
 Southbound Hwy 99 on ramp from Clinton Ave east of closure:
 Take West Avenue south to McKinley Ave. Proceed west on McKinley to Southbound Hwy 99 on ramp.

Detour
 Northbound Hwy 99 off ramp to Clinton Ave west of Hwy 99:
 Temporary loop ramp off of existing northbound Hwy 99 offramp to tie into westbound tunnel to Clinton Ave.

Detour
 Northbound Hwy 99 off ramp to Clinton Ave east of Hwy 99:
 Take McKinley off ramp, head east to West Ave. Proceed north on West Ave to Clinton Ave.

Detour
 Connects Clinton Ave east & west of closure:
 Temporarily Convert tunnel to 2-way traffic. Allows connectivity from Clinton to Golden State Blvd then to McKinley and vice-versa

Clinton Bridge Closure

LEGEND

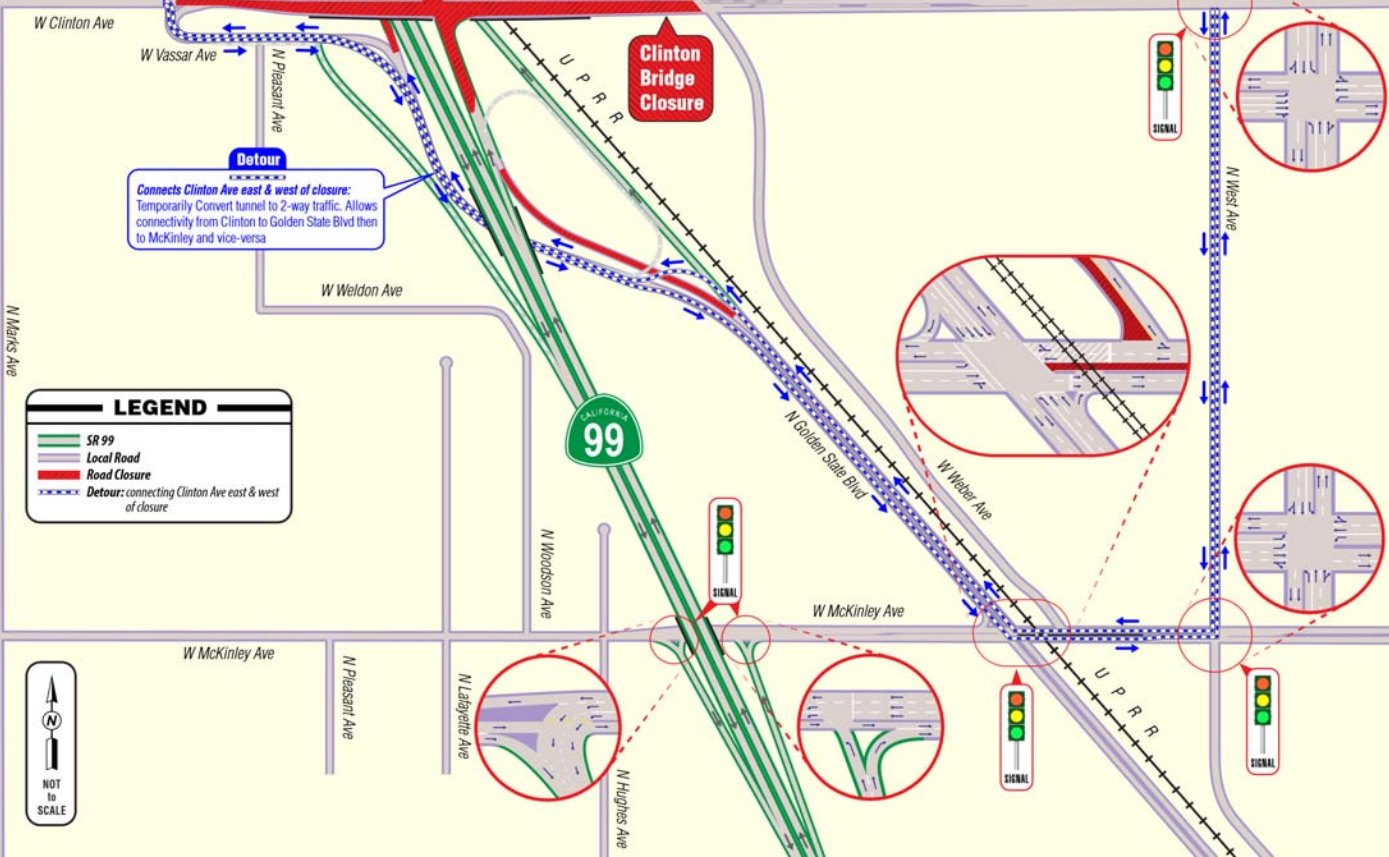
- SR 99
- Local Road
- Road Closure
- Detour: from southbound Hwy 99 offramp
- Detour: to southbound Hwy 99 onramp
- Detour: from northbound Hwy 99 offramp
- Detour: to northbound Hwy 99 onramp
- Detour: connecting Clinton Ave east & west of closure



CLINTON CLOSURE DETOUR

Connecting Clinton Avenue east & west of closure

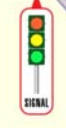
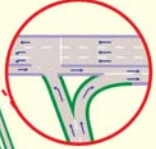
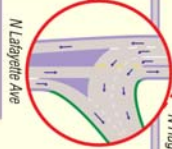
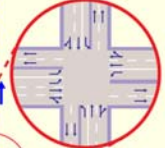
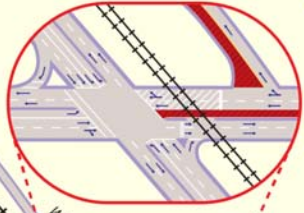
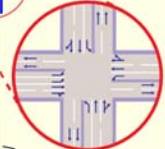
(PRELIMINARY - SUBJECT TO CHANGE)



Detour
 Connects Clinton Ave east & west of closure:
 Temporarily Convert tunnel to 2-way traffic. Allows connectivity from Clinton to Golden State Blvd then to McKinley and vice-versa

LEGEND

- SR 99
- Local Road
- Road Closure
- Detour: connecting Clinton Ave east & west of closure





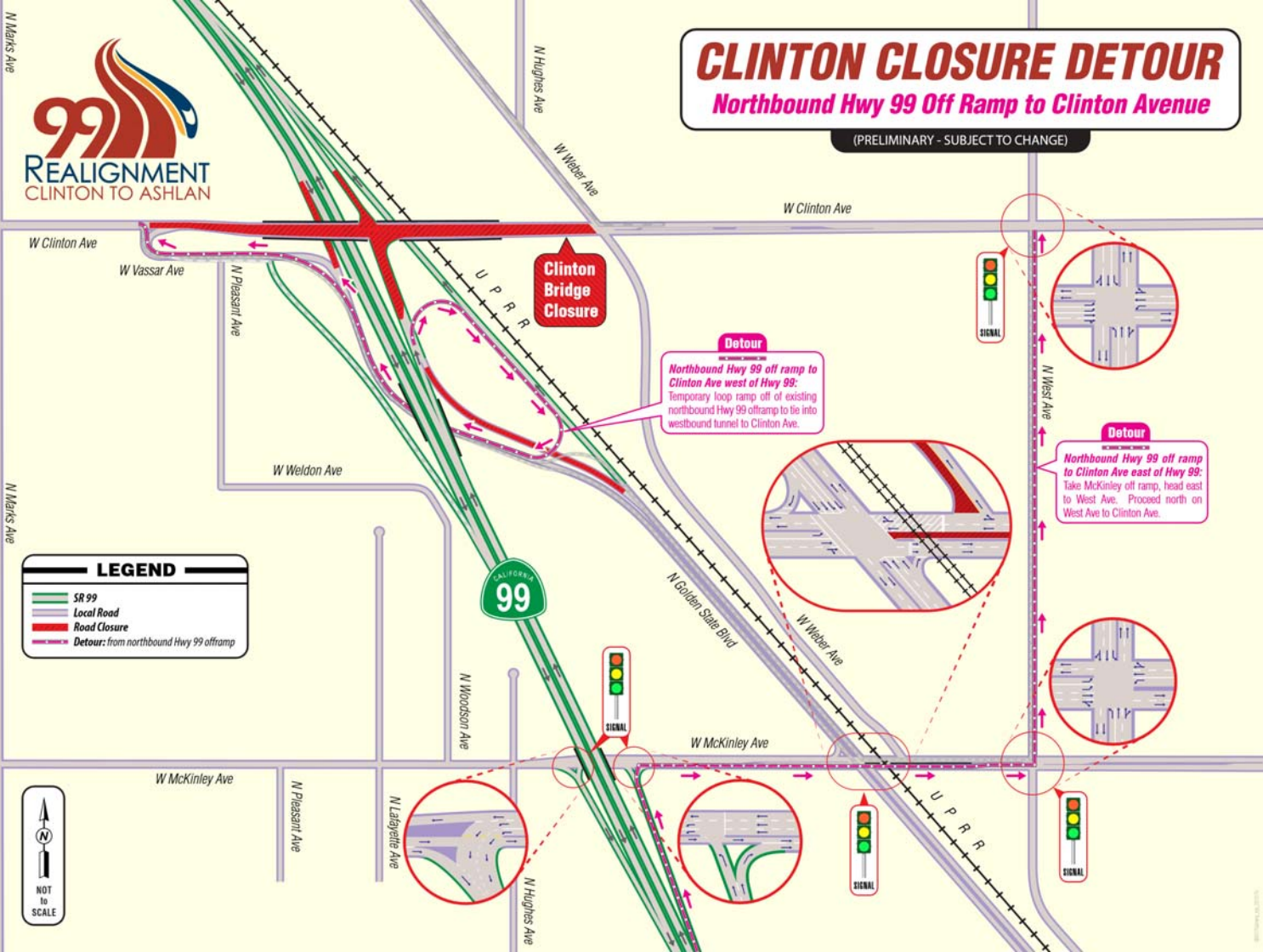
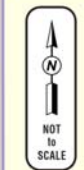
CLINTON CLOSURE DETOUR

Northbound Hwy 99 Off Ramp to Clinton Avenue

(PRELIMINARY - SUBJECT TO CHANGE)

LEGEND

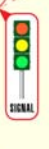
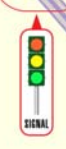
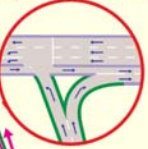
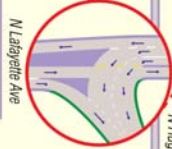
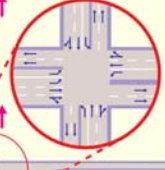
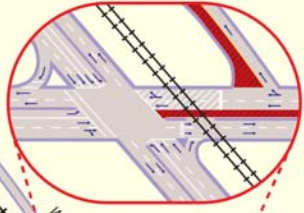
- SR 99
- Local Road
- Road Closure
- Detour: from northbound Hwy 99 offramp



Clinton Bridge Closure

Detour
 Northbound Hwy 99 off ramp to Clinton Ave west of Hwy 99: Temporary loop ramp off of existing northbound Hwy 99 offramp to tie into westbound tunnel to Clinton Ave.

Detour
 Northbound Hwy 99 off ramp to Clinton Ave east of Hwy 99: Take McKinley off ramp, head east to West Ave. Proceed north on West Ave to Clinton Ave.





CLINTON CLOSURE DETOUR

Northbound Hwy 99 On Ramp from Clinton Avenue

(PRELIMINARY - SUBJECT TO CHANGE)

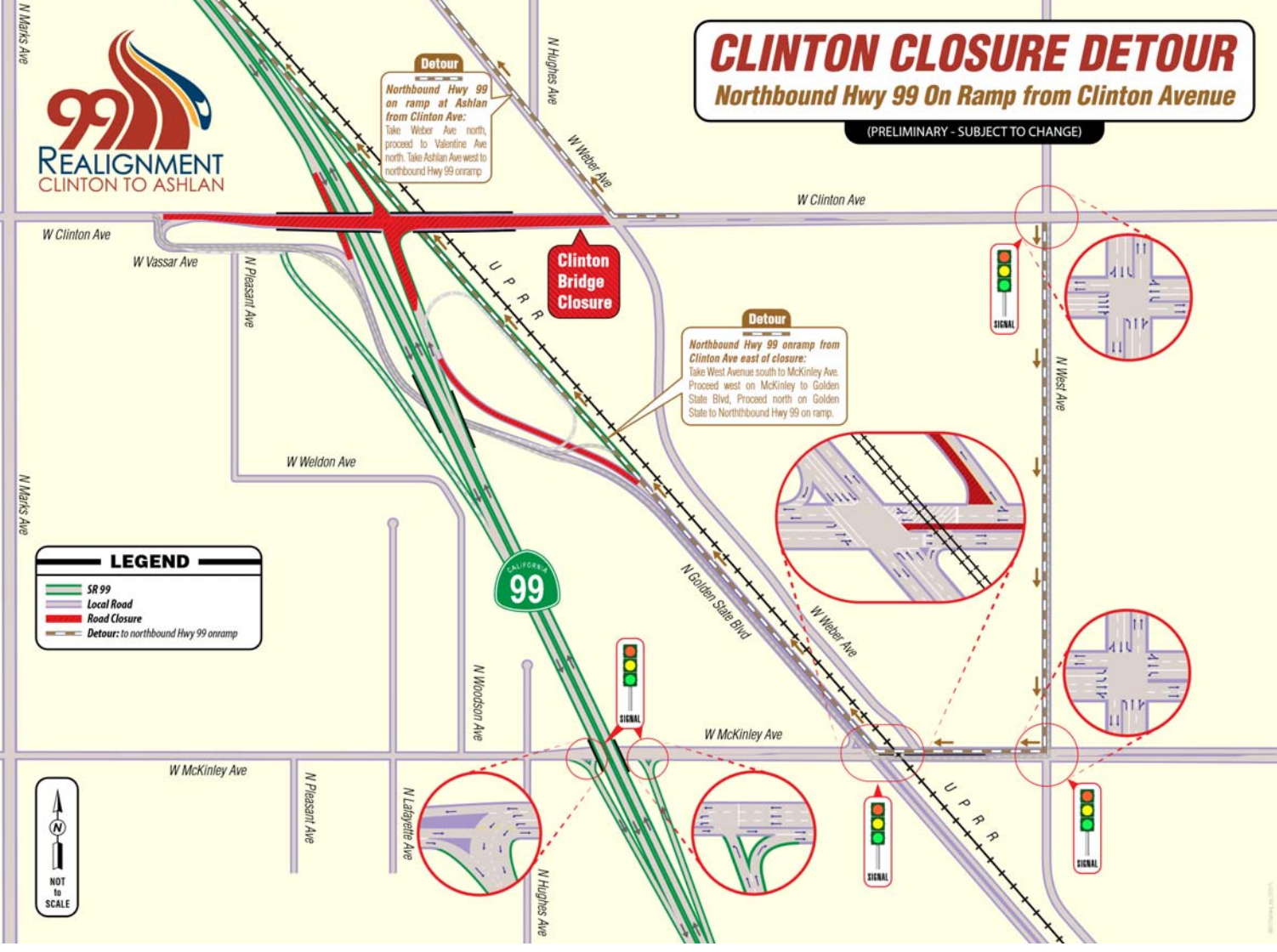
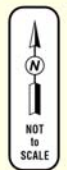
Detour
Northbound Hwy 99 on ramp at Ashlan from Clinton Ave:
Take Weber Ave north, proceed to Valentine Ave north. Take Ashlan Ave west to northbound Hwy 99 onramp

Clinton Bridge Closure

Detour
Northbound Hwy 99 onramp from Clinton Ave east of closure:
Take West Avenue south to McKinley Ave. Proceed west on McKinley to Golden State Blvd. Proceed north on Golden State to Northbound Hwy 99 on ramp.

LEGEND

- SR 99
- Local Road
- Road Closure
- Detour: to northbound Hwy 99 onramp





CLINTON CLOSURE DETOUR

Southbound Hwy 99 Off Ramp to Clinton Avenue

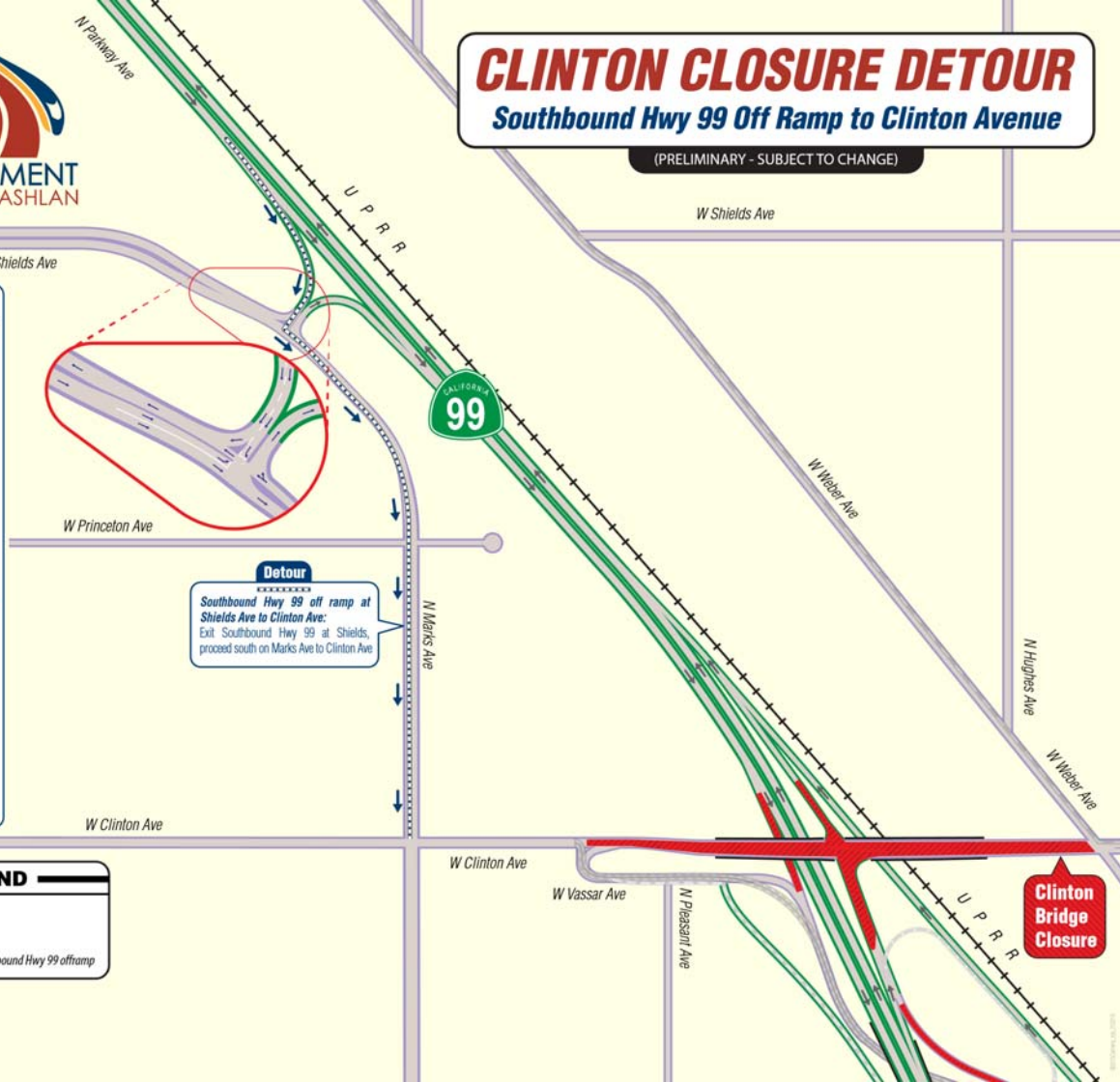
(PRELIMINARY - SUBJECT TO CHANGE)

Detour

Southbound Hwy 99 off ramp at Ashlan Ave to Clinton Ave:
Exit Southbound Hwy 99 at Ashlan, proceed south Parkway Dr to Brawley Ave south to Clinton Ave

Detour

Southbound Hwy 99 off ramp at Shields Ave to Clinton Ave:
Exit Southbound Hwy 99 at Shields, proceed south on Marks Ave to Clinton Ave



LEGEND

- SR 99
- Local Road
- Road Closure
- Detour: from southbound Hwy 99 offramp

Clinton Bridge Closure



CLINTON CLOSURE DETOUR

Southbound Hwy 99 On Ramp from Clinton Avenue

(PRELIMINARY - SUBJECT TO CHANGE)

Detour

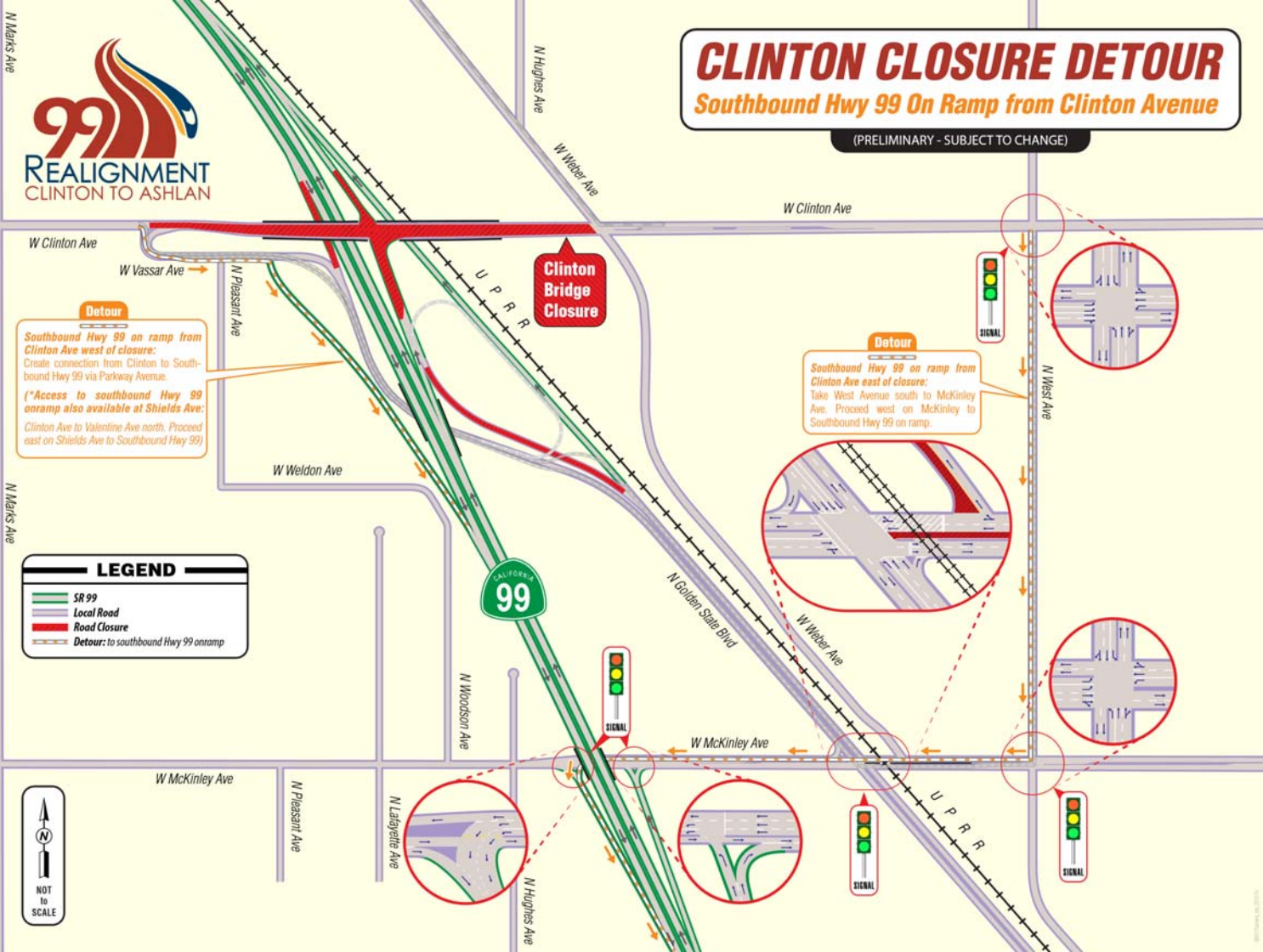
Southbound Hwy 99 on ramp from Clinton Ave west of closure:
 Create connection from Clinton to Southbound Hwy 99 via Parkway Avenue.
 (*Access to southbound Hwy 99 onramp also available at Shields Ave.)
 Clinton Ave to Valentine Ave north. Proceed east on Shields Ave to Southbound Hwy 99)

Detour

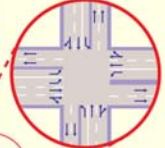
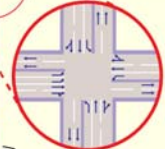
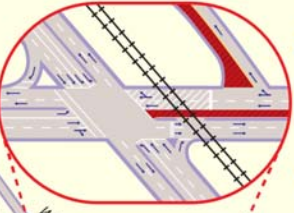
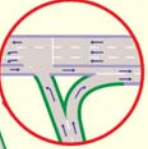
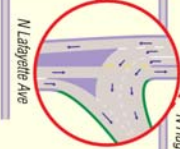
Southbound Hwy 99 on ramp from Clinton Ave east of closure:
 Take West Avenue south to McKinley Ave. Proceed west on McKinley to Southbound Hwy 99 on ramp.

LEGEND

- SR 99
- Local Road
- Road Closure
- Detour: to southbound Hwy 99 onramp



Clinton Bridge Closure



CLINTON CLOSURE

FREE Temporary Shuttle Service Bus Route

STAGE 2: CLINTON Ave CLOSURE

SHUTTLE SCHEDULE

7 days a week including holidays
 6am - 9pm daily
 Every 30 minutes
 Two stops only as shown on map



Bus Route: Westbound

Connects Clinton Ave east & west of closure



LEGEND	
	SR 99
	Local Road
	Local Road, New
	Road Closure
	Bus Route, Eastbound
	Bus Route, Westbound

Bus Route: Eastbound

Connects Clinton Ave west & east of closure



Clinton Bridge Closure

