

Scenario Development Public Workshop Results

April 25, 2017

● Limited investment    ●● Moderate investment    ●●● Priority investment

Public Support Score >>>

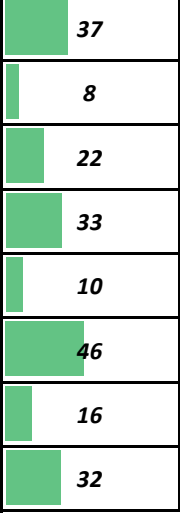


Scenario A: Investing in Existing Communities  
 Scenario B: Transit-Oriented Development  
 Scenario C: Maintaining Existing Transportation Facilities  
 Scenario D: Active Transportation

Transportation Funding Priorities

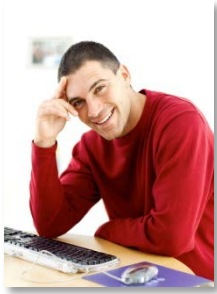
	Scenario A: Investing in Existing Communities	Scenario B: Transit-Oriented Development	Scenario C: Maintaining Existing Transportation Facilities	Scenario D: Active Transportation
• Maintain and repair existing roads	●●●	●●	●●●	●
• Expand roadway capacity	●	●	●●	●
• Enhance and maintain transit service	●●	●●●	●●	●●
• Enhance and maintain active transportation	●●	●●	●	●●●
• Public safety	●●	●●	●●	●●●
• Reduce pollution and GHG	●●	●●	●●	●●●
• Reduce congestion	●	●●	●●●	●
• Serve disadvantaged populations	●●●	●●	●	●●

Public Support

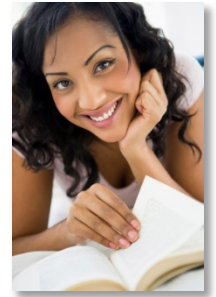


Land Use Strategies

A - Favor mixed-use development, OR B - Favor historical trends (SFR)	A ⇐ B	A ⇐ B	A ⇐ B	A ⇐ B	A ⇐ B
A - Favor compact development, OR B - Favor historical trends (low densities)	A ⇐ B	A ⇐ B	A ⇐ B	A ⇐ B	A ⇐ B
A - Encourage development near urban transit, OR B - Encourage development in small communities	A ⇨ B	A ⇐ B	A = B	A ⇨ B	A ⇐ B

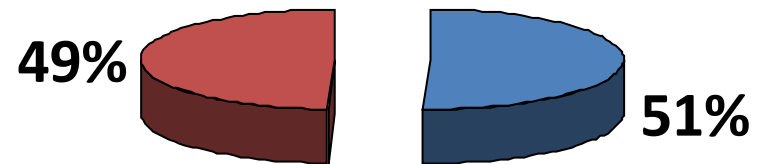


# What is your gender?

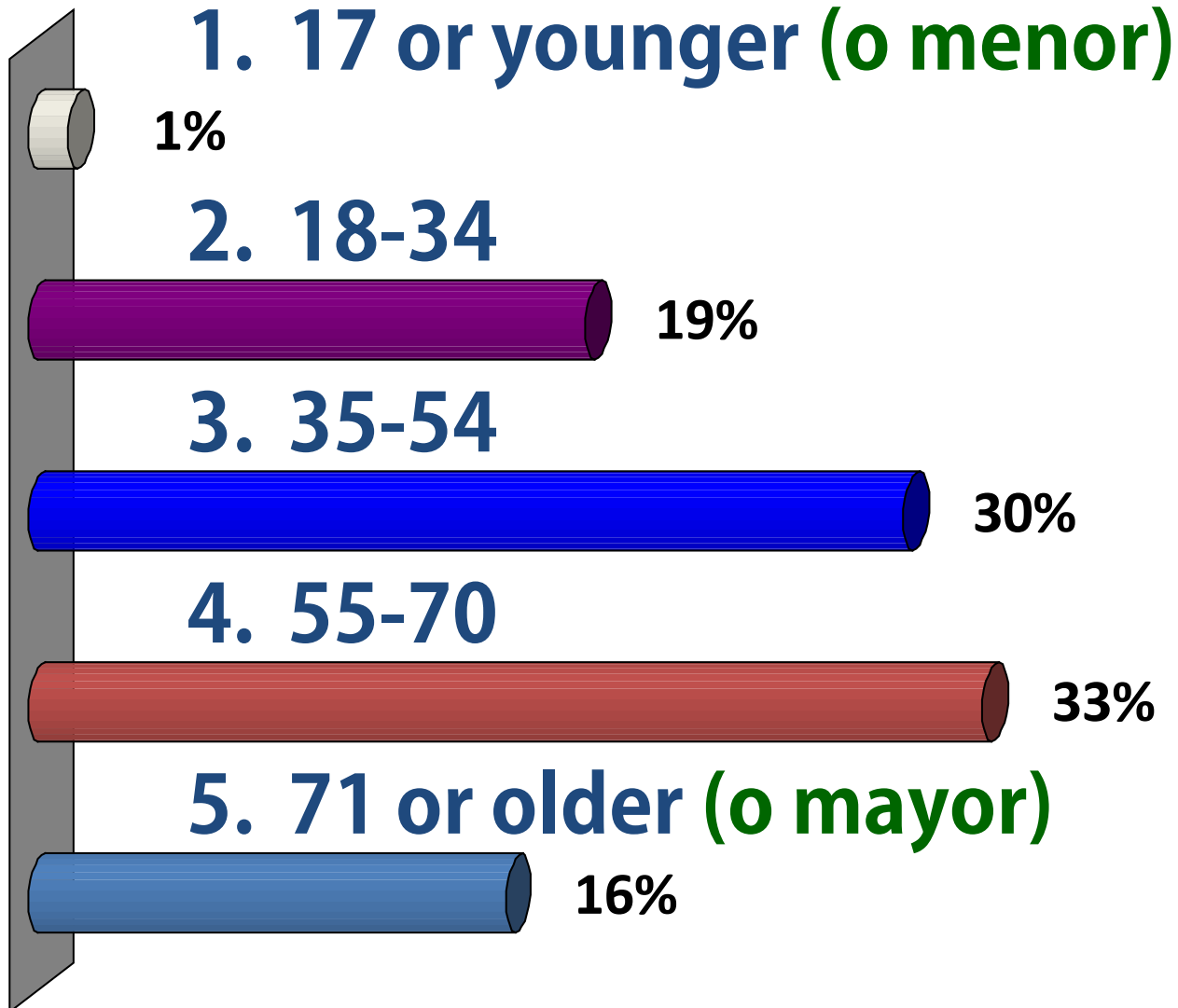


**1. Male/*Masculino***

**2. Female/*Femenino***

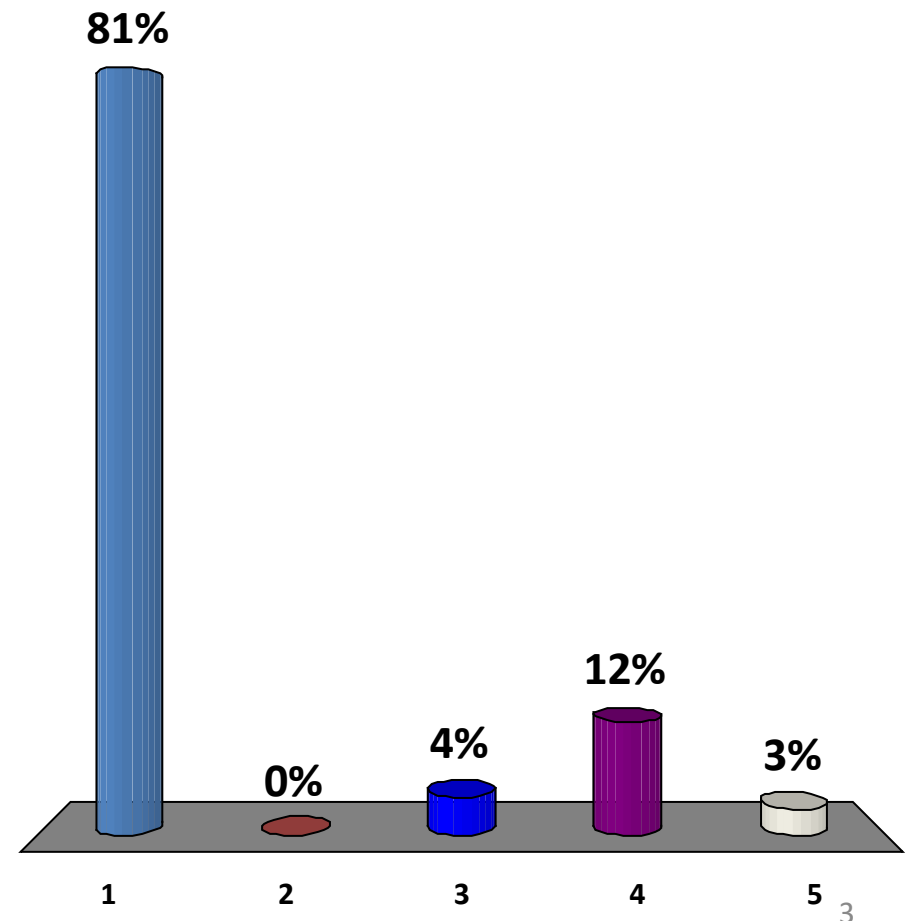


# How old are you?



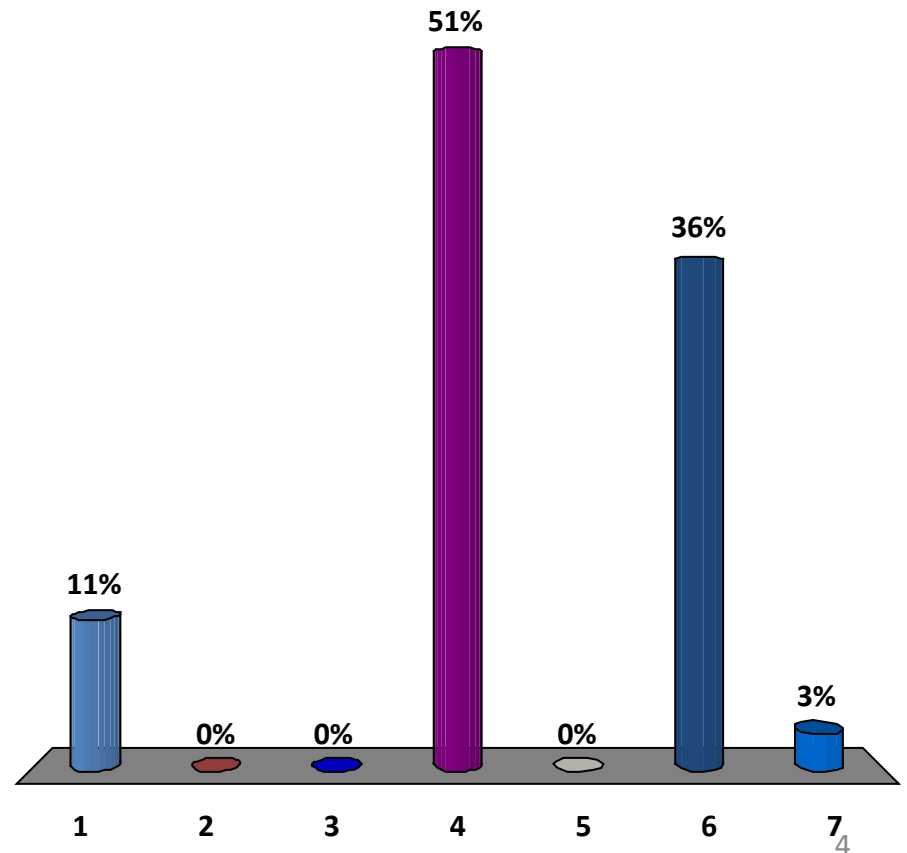
# Where do you live?

1. Fresno or Clovis
2. Foothill/Mountain Areas  
*(Faldas/Montañas)*
3. East of highway 99-not  
Fresno or Clovis  
*Este del 99*
4. West of highway 99-not  
Fresno/ *Oeste del 99*
5. Outside of Fresno  
County/ *Afuera del  
Condado de Fresno*



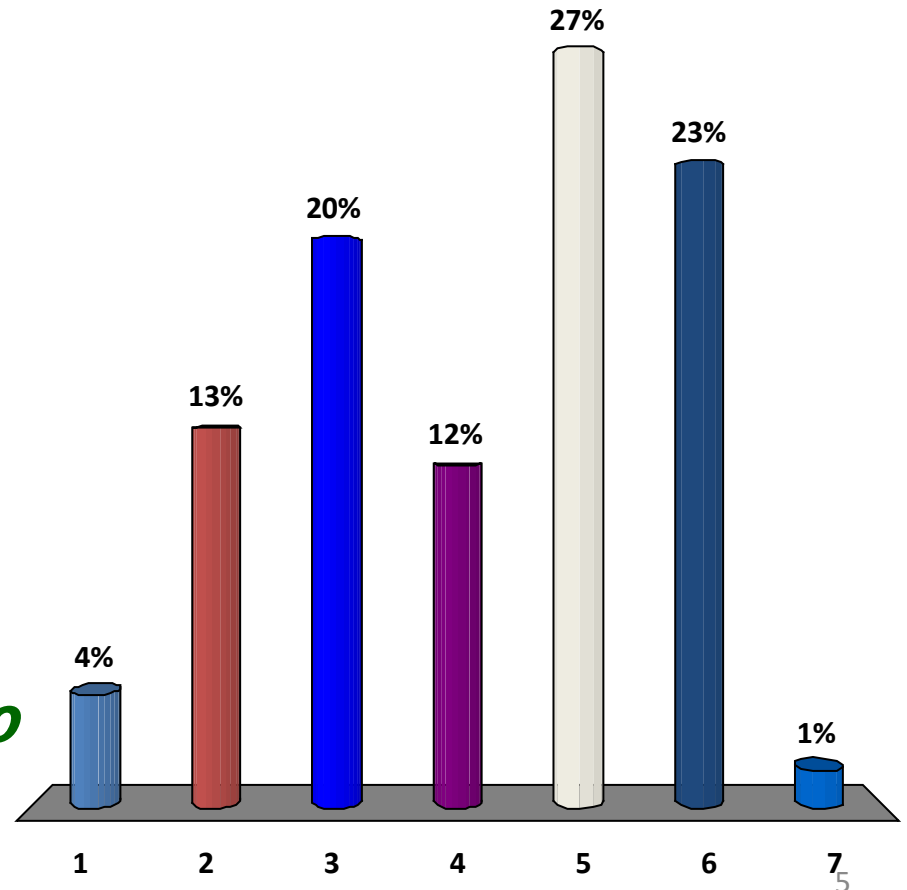
# What is your ethnic background?

1. African American
2. American Indian
3. Asian/*Asiático*
4. Hispanic or Latino
5. Pacific Islander/*Islas Pacíficas*
6. White/*Blanco*
7. Other/*Otro*



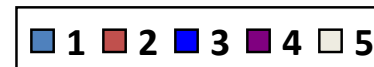
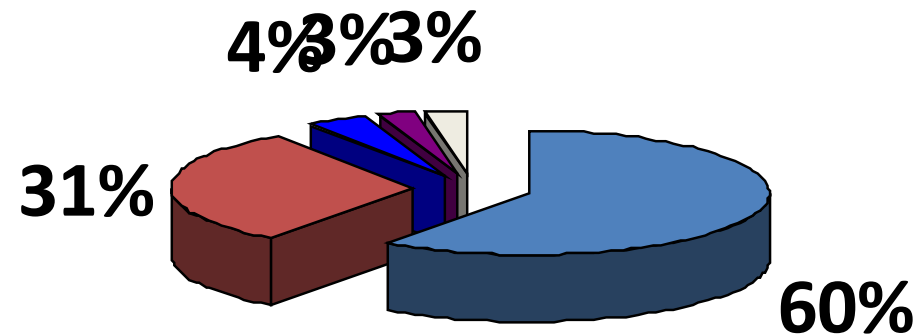
# What is the last grade you completed in school?

1. Some school/ *Algo*
2. High school graduate  
*preparatoria*
3. Some college  
*Algo de universidad*
4. Vocational Training  
*Capacitación vocacional*
5. Bachelor's degree  
*Licenciatura*
6. Graduate or professional degree/  
*Título universitario o profesional*
7. No school/ *Nada*



# Who/what are you representing at this workshop?

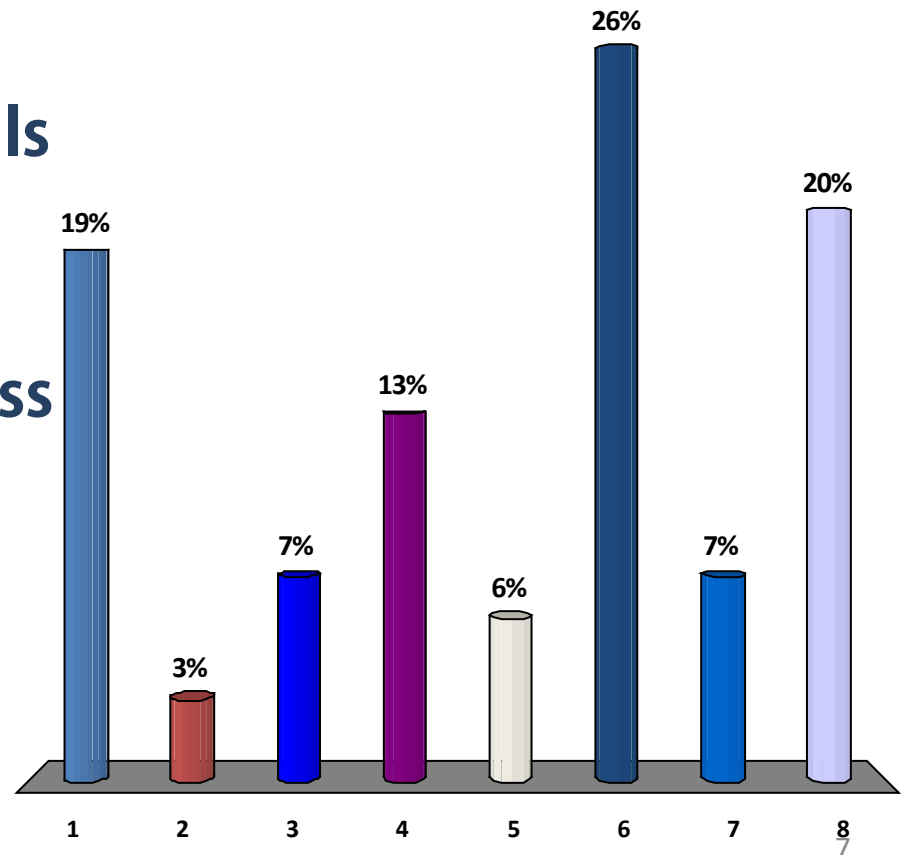
1. Community member/family representative/ *Miembro comunitario*
2. Organization or club member/ *Miembro de organización*
3. Government employee/ *Empleado de gobierno*
4. Elected official/ *Funcionario electo*
5. Other



# What should we spend money on?

## First choice:

1. Repair streets & roads
2. Add more lanes on the roads
3. Improve bus service
4. Add & repair bike lanes, trails and sidewalks
5. Reduce roadway collisions
6. Improve air quality & address climate change
7. Reduce congestion
8. Serve disadvantaged & sensitive populations

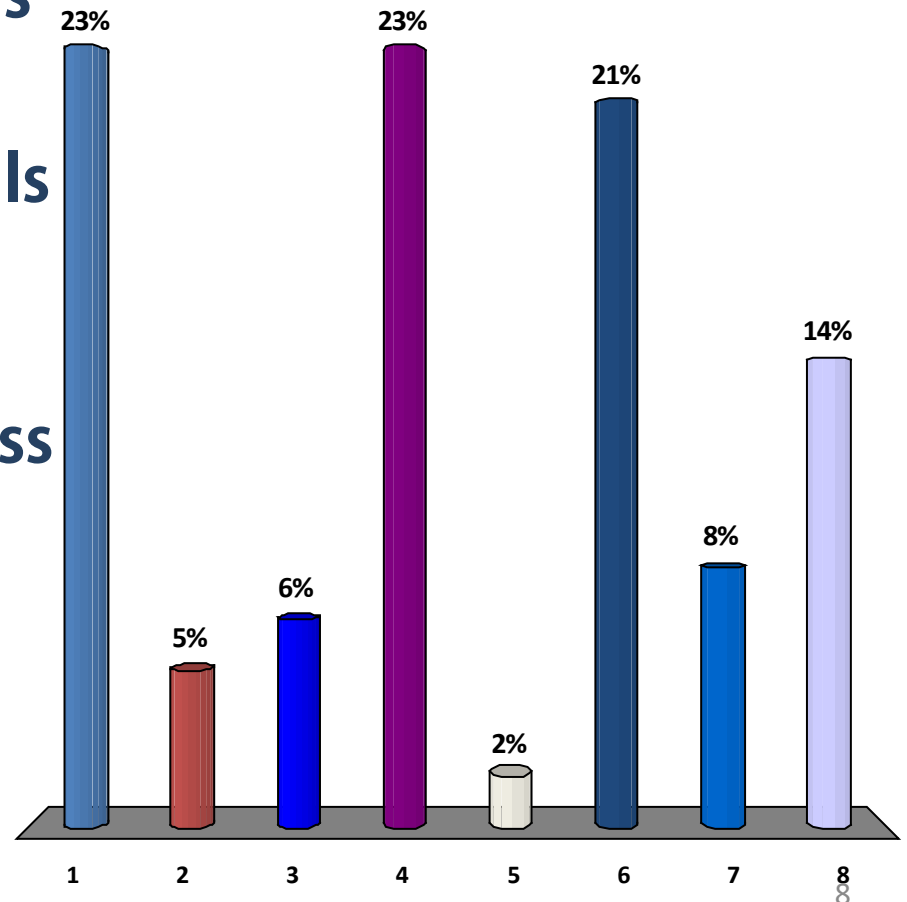




# What should we spend money on?

## Second choice:

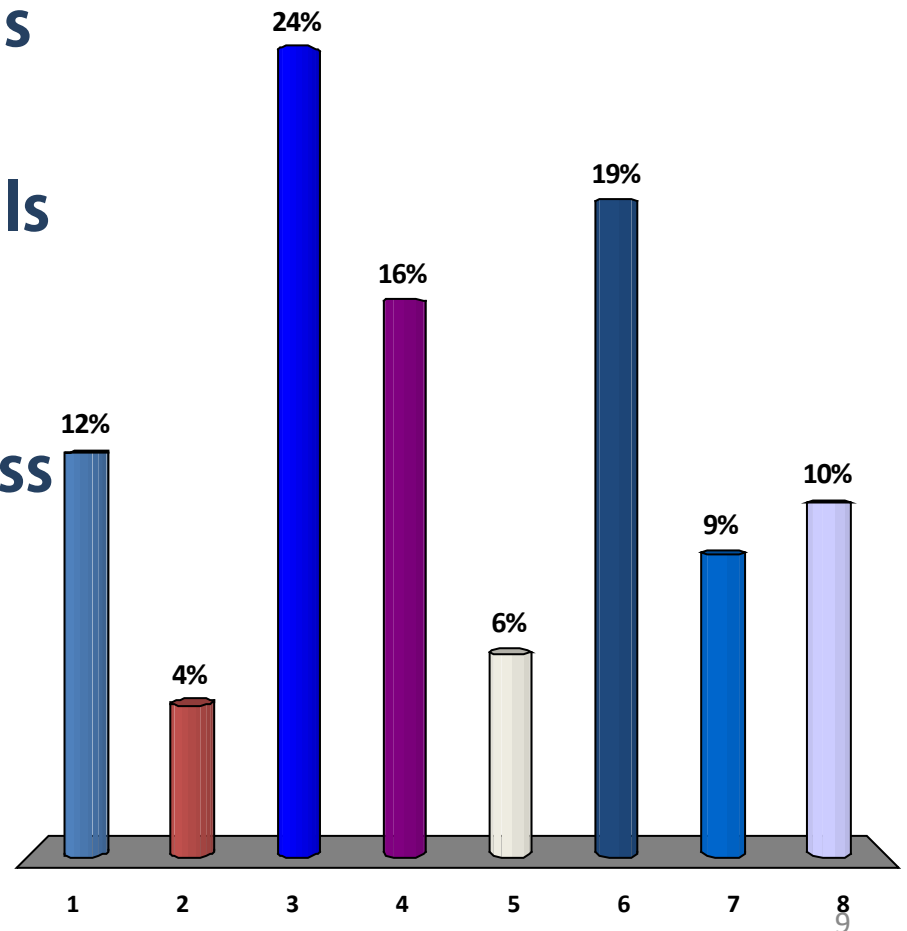
1. Repair streets & roads
2. Add more lanes on the roads
3. Improve bus service
4. Add & repair bike lanes, trails and sidewalks
5. Reduce roadway collisions
6. Improve air quality & address climate change
7. Reduce congestion
8. Serve disadvantaged & sensitive populations



# What should we spend money on?

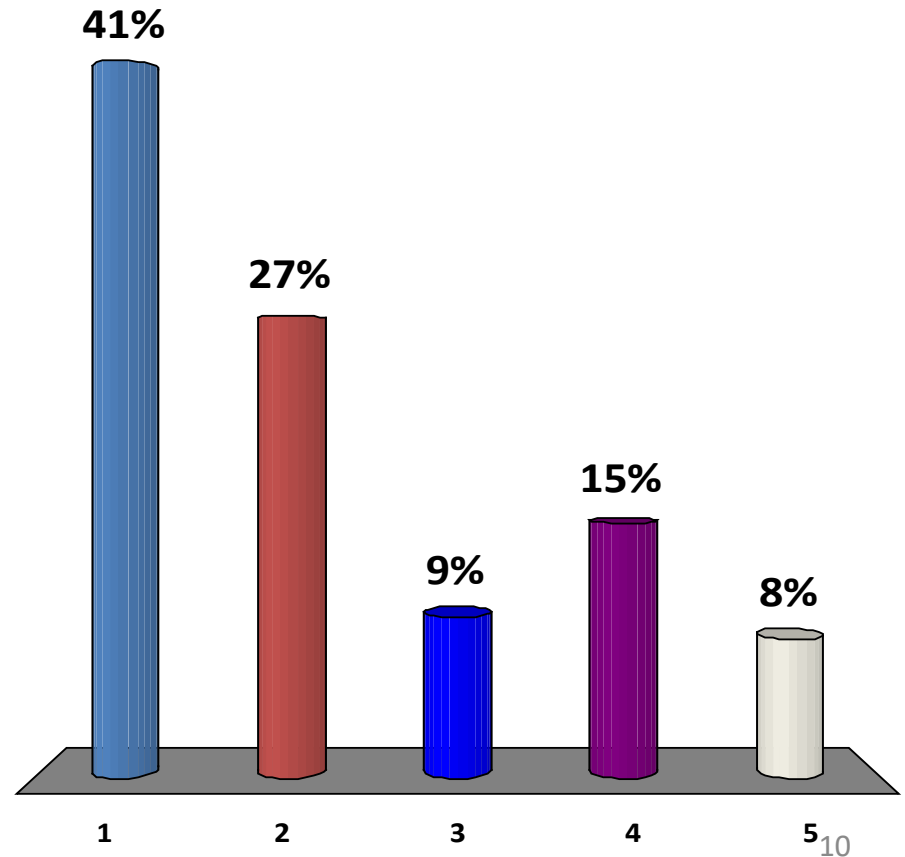
## Third choice:

1. Repair streets & roads
2. Add more lanes on the roads
3. Improve bus service
4. Add & repair bike lanes, trails and sidewalks
5. Reduce roadway collisions
6. Improve air quality & address climate change
7. Reduce congestion
8. Serve disadvantaged & sensitive populations



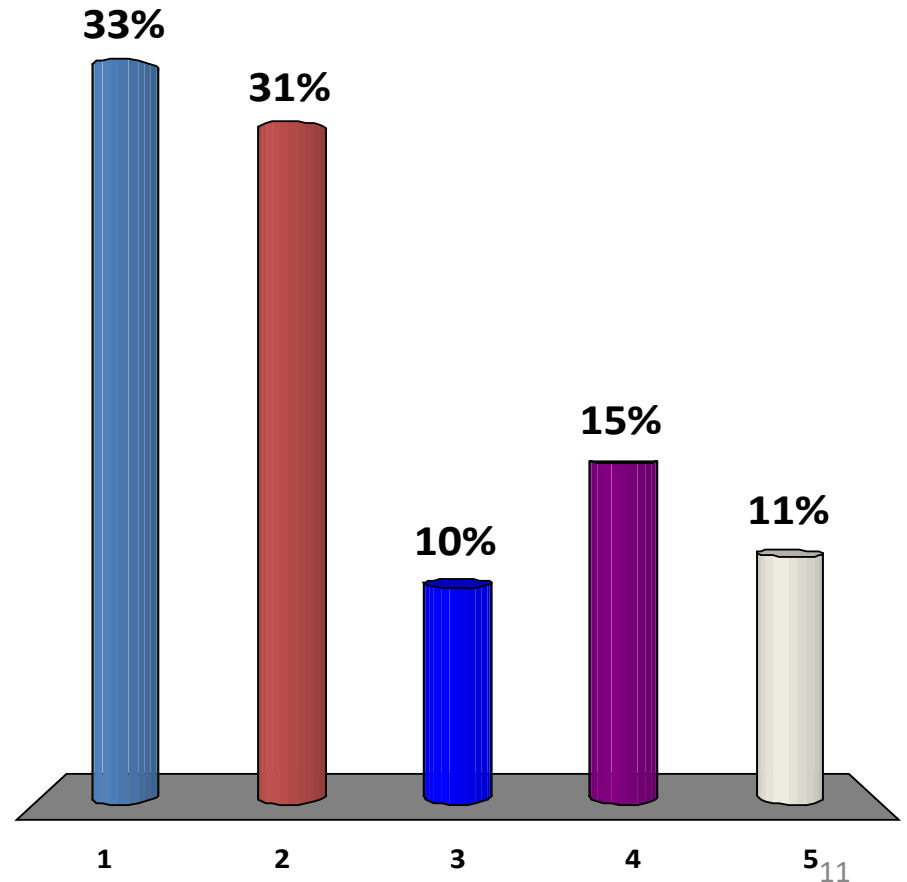
# Should we actively try to change historical housing trends and move toward mixed-use development?

1. Absolutely
2. Yes
3. No preference
4. No
5. Definitely not



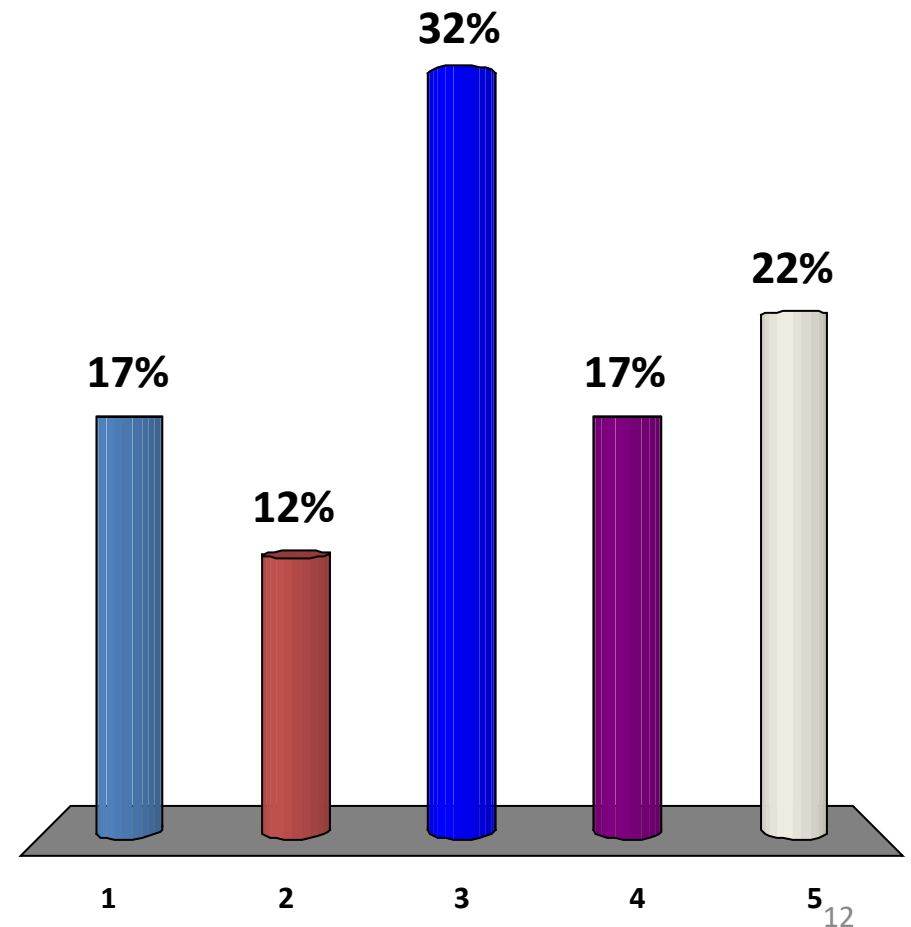
# Should we favor higher-density housing for new development?

1. Absolutely
2. Yes
3. No preference
4. No
5. Definitely not



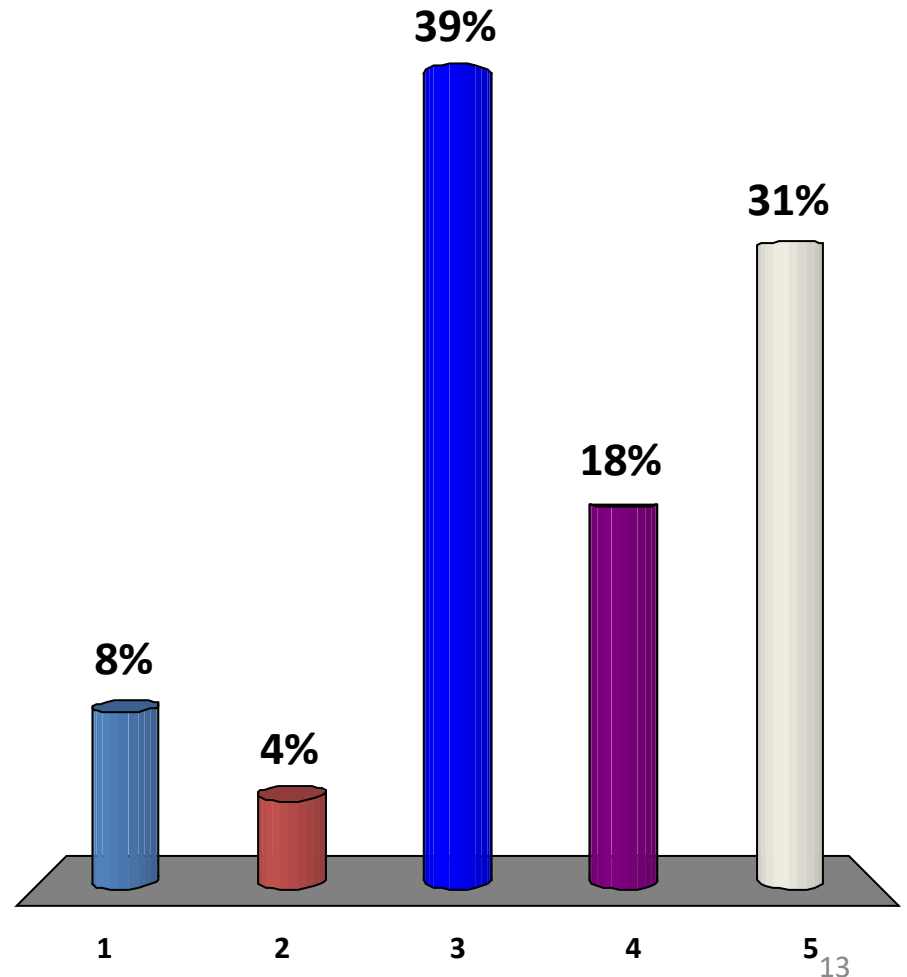
# Should we prioritize development in certain areas? If so, where?

1. Strongly prioritize small, rural communities
2. Moderately prioritize small, rural communities
3. Balance investment between urban and rural areas
4. Moderately prioritize development near urban transit
5. Strongly prioritize development near urban transit



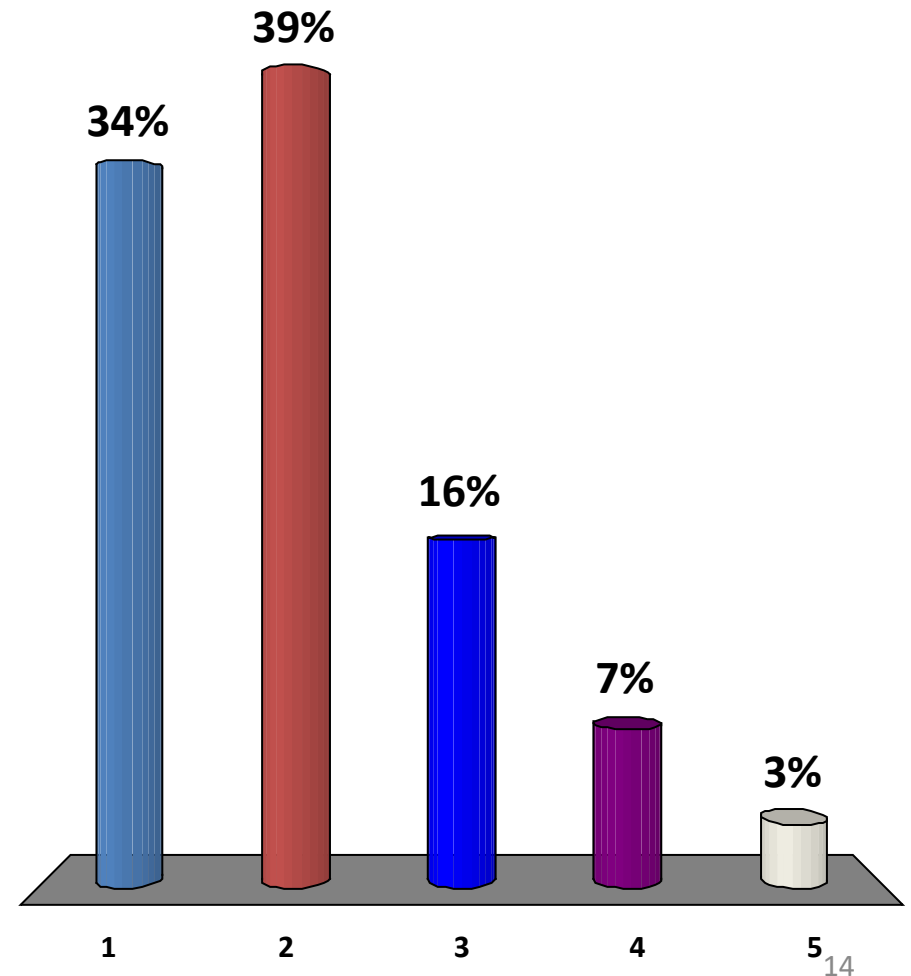
# How should transit investments be used?

1. Strongly prioritize accessibility (adding more stops)
2. Moderately prioritize accessibility
3. Balance investment between accessibility and reliability
4. Moderately prioritize reliability (faster headways)
5. Strongly prioritize reliability



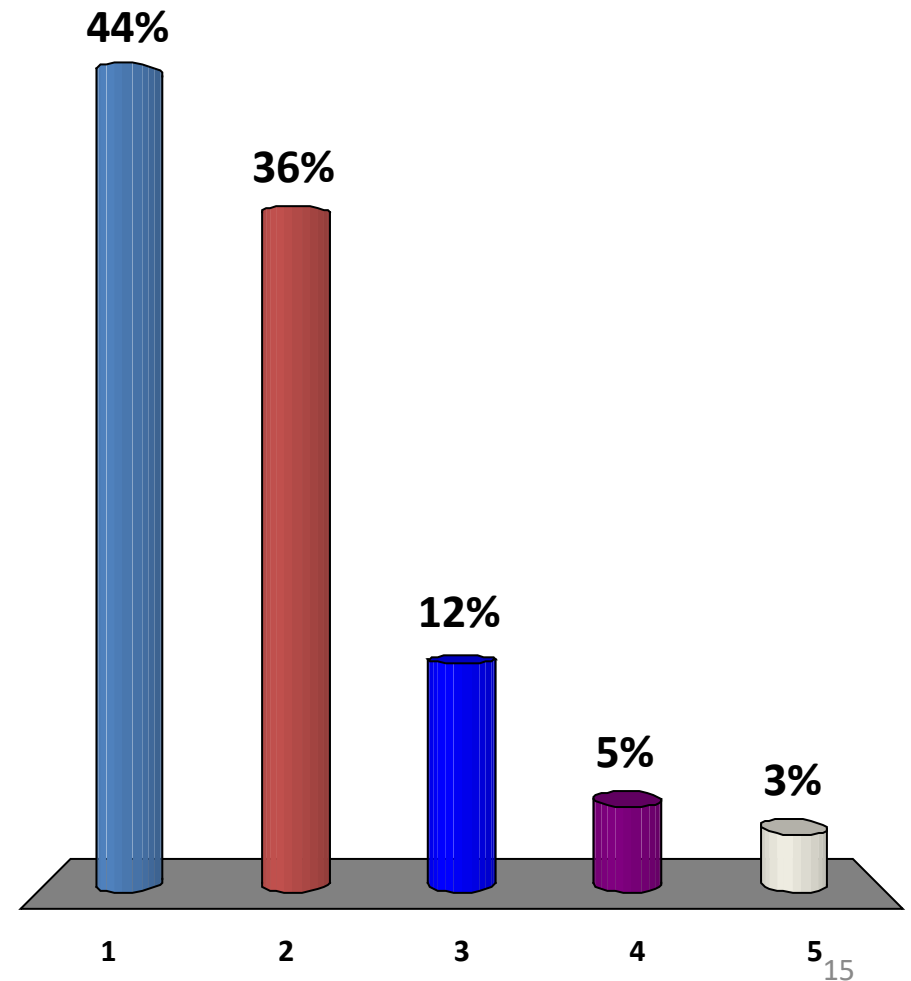
# How would you rate Scenario A: “Invest in Existing Communities”?

1. Strongly support
2. Moderately support
3. No preference
4. Moderately oppose
5. Strongly oppose



# How would you rate Scenario B: “Transit-Oriented Development”?

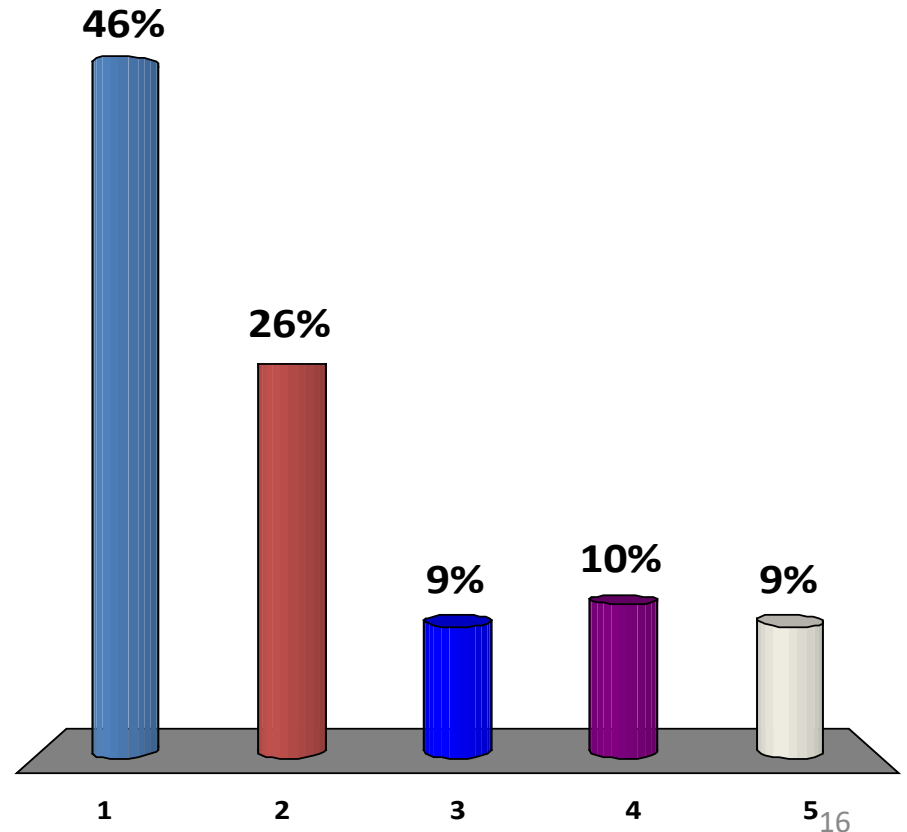
1. Strongly support
2. Moderately support
3. No preference
4. Moderately oppose
5. Strongly oppose





# How would you rate Scenario C: “Maintaining Existing Transportation Facilities”?

1. Strongly support
2. Moderately support
3. No preference
4. Moderately oppose
5. Strongly oppose



# How would you rate Scenario D: “Active Transportation”?

1. Strongly support
2. Moderately support
3. No preference
4. Moderately oppose
5. Strongly oppose

