

Scenario Development Public Workshop Results

April 25, 2017

● Limited investment ●● Moderate investment ●●● Priority investment

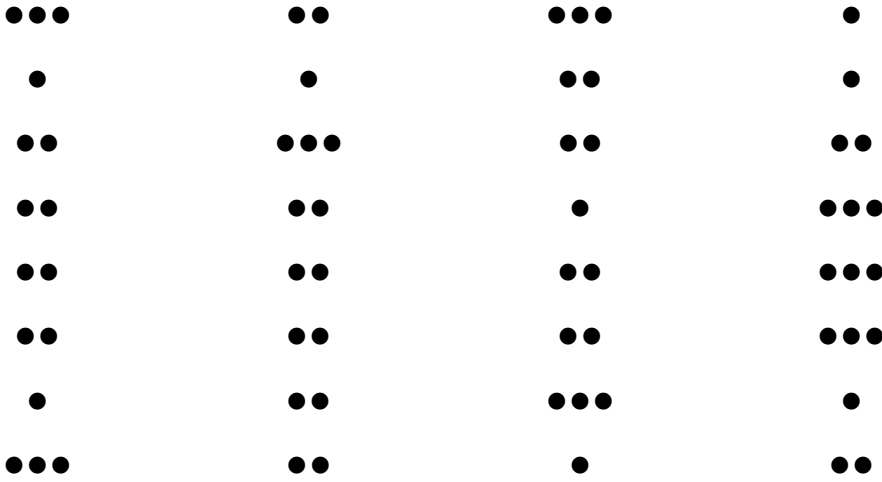
Public Support Score >>>



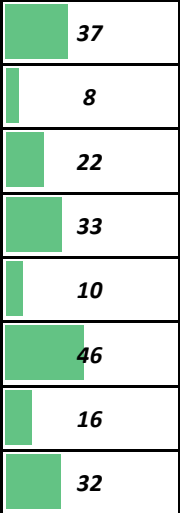
Scenario A: Investing in Existing Communities Scenario B: Transit-Oriented Development Scenario C: Maintaining Existing Transportation Facilities Scenario D: Active Transportation

Transportation Funding Priorities

- Maintain and repair existing roads
- Expand roadway capacity
- Enhance and maintain transit service
- Enhance and maintain active transportation
- Public safety
- Reduce pollution and GHG
- Reduce congestion
- Serve disadvantaged populations

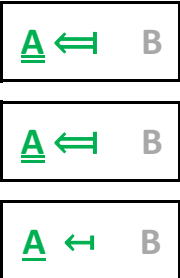
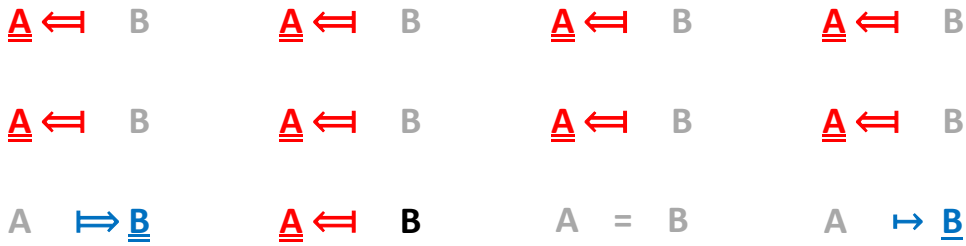


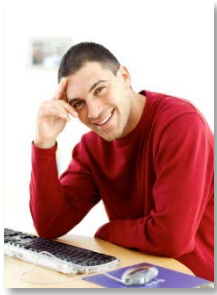
Public Support



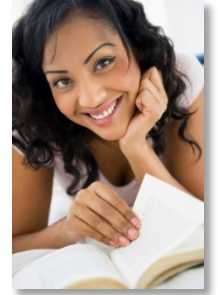
Land Use Strategies

- A - Favor mixed-use development, OR B - Favor historical trends (SFR)
- A - Favor compact development, OR B - Favor historical trends (low densities)
- A - Encourage development near urban transit, OR B - Encourage development in small communities



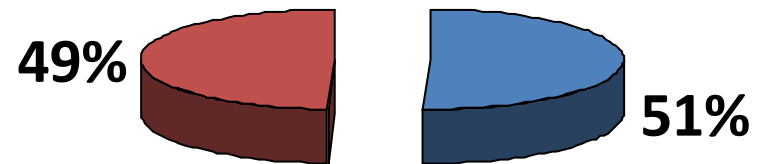


What is your gender?

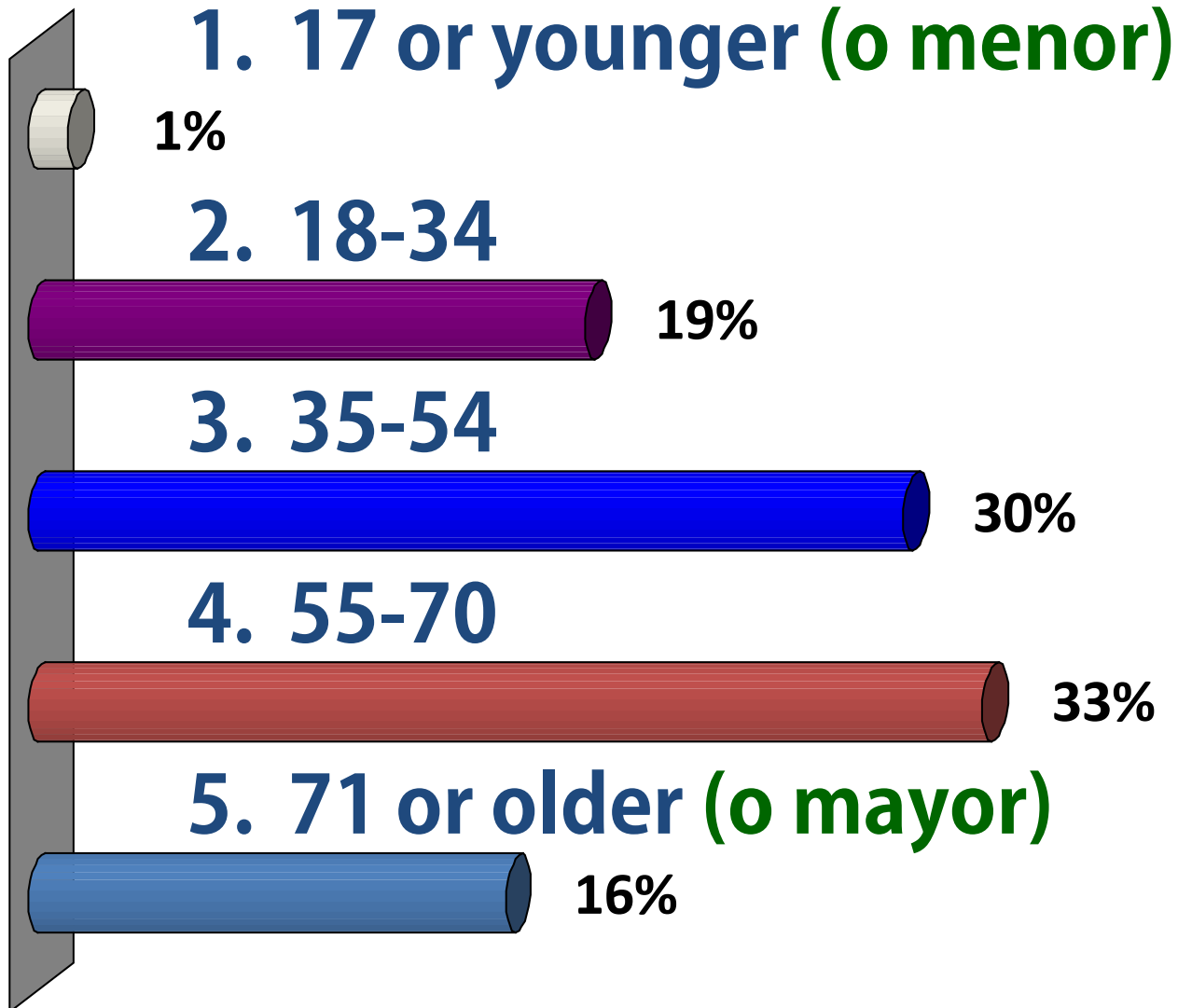


1. Male/*Masculino*

2. Female/*Femenino*

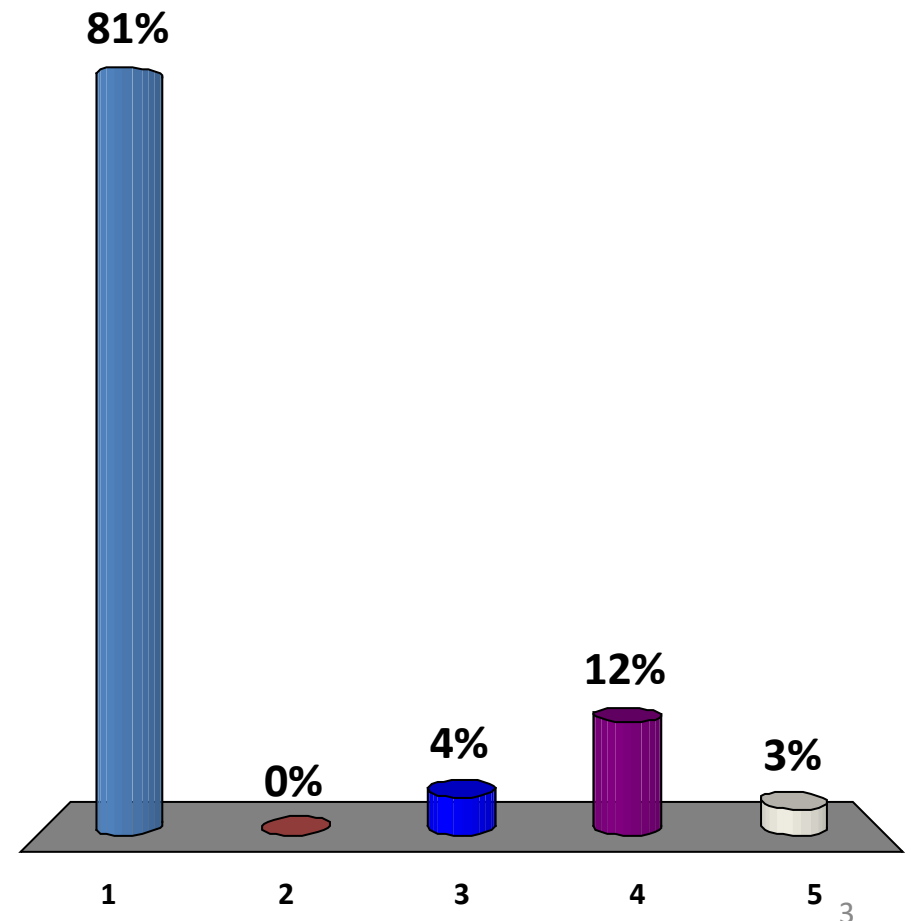


How old are you?



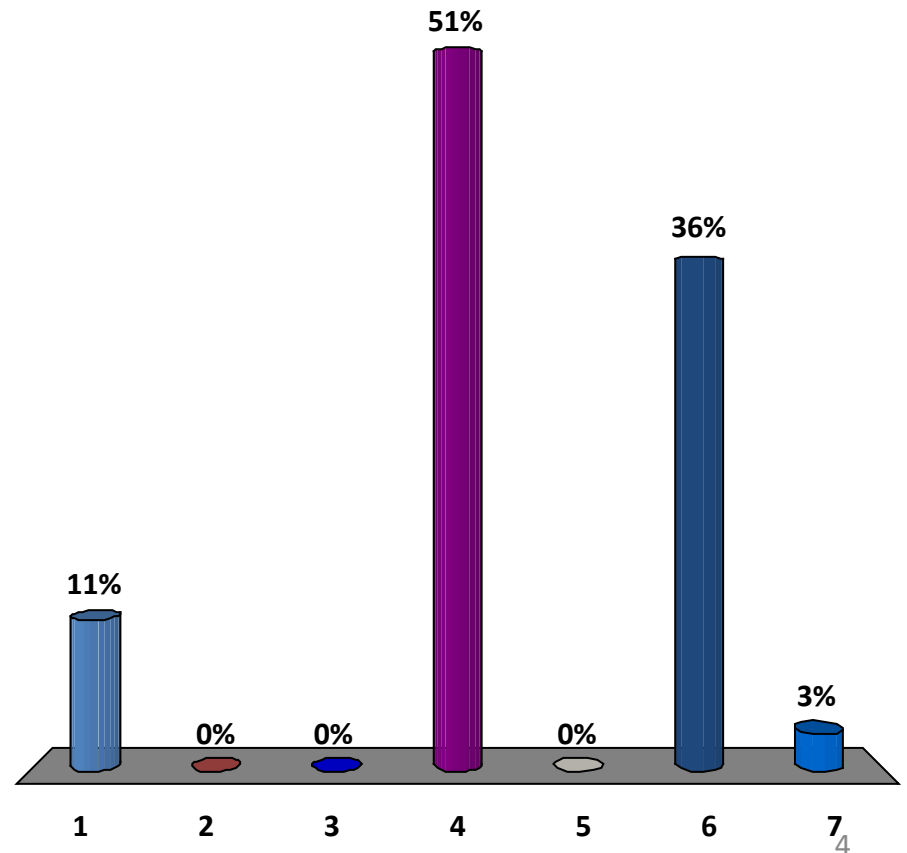
Where do you live?

1. Fresno or Clovis
2. Foothill/Mountain Areas
(Faldas/Montañas)
3. East of highway 99-not
Fresno or Clovis
Este del 99
4. West of highway 99-not
Fresno/ *Oeste del 99*
5. Outside of Fresno
County/ *Afuera del
Condado de Fresno*



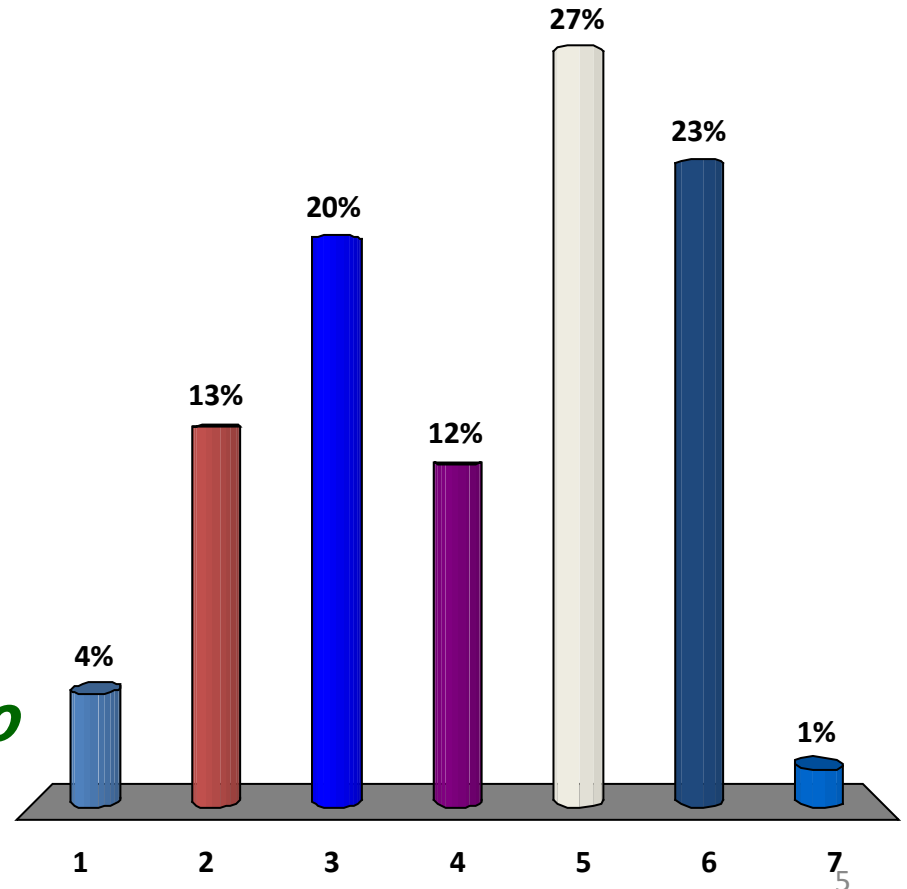
What is your ethnic background?

1. African American
2. American Indian
3. Asian/*Asiático*
4. Hispanic or Latino
5. Pacific Islander/*Islas Pacíficas*
6. White/*Blanco*
7. Other/*Otro*



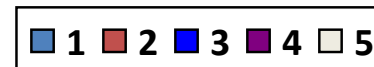
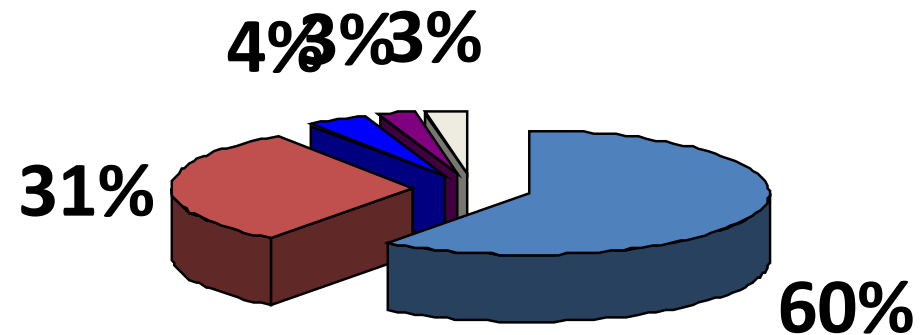
What is the last grade you completed in school?

1. Some school/ *Algo*
2. High school graduate
preparatoria
3. Some college
Algo de universidad
4. Vocational Training
Capacitación vocacional
5. Bachelor's degree
Licenciatura
6. Graduate or professional degree/
Título universitario o profesional
7. No school/ *Nada*



Who/what are you representing at this workshop?

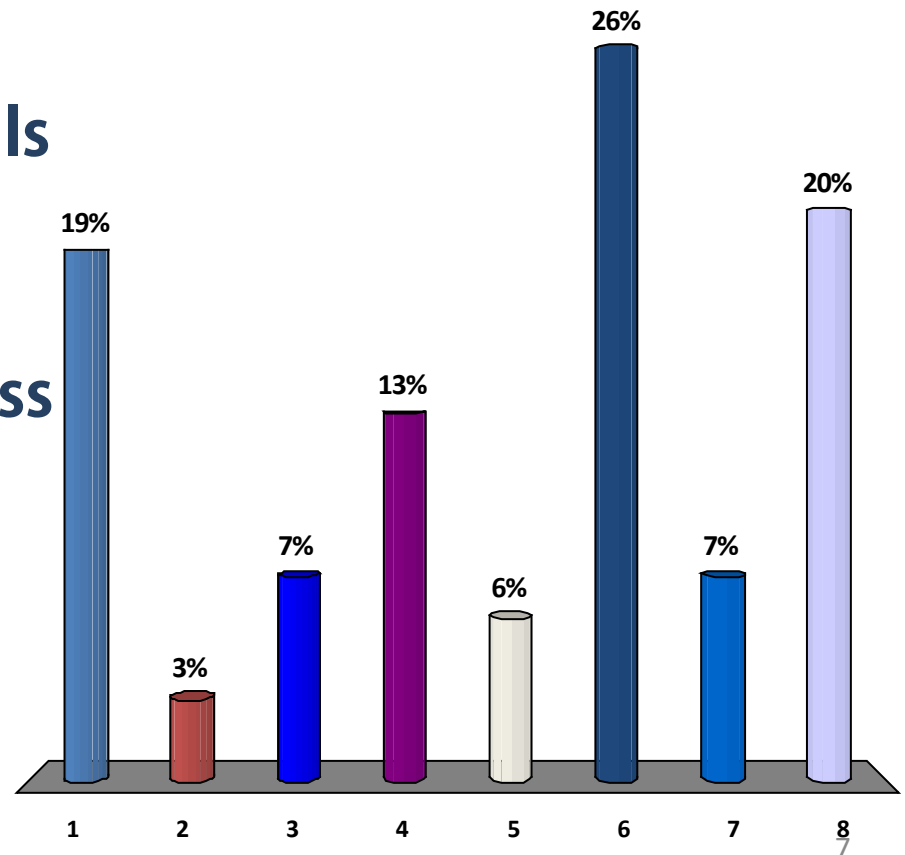
1. Community member/family representative/ *Miembro comunitario*
2. Organization or club member/ *Miembro de organización*
3. Government employee/ *Empleado de gobierno*
4. Elected official/ *Funcionario electo*
5. Other



What should we spend money on?

First choice:

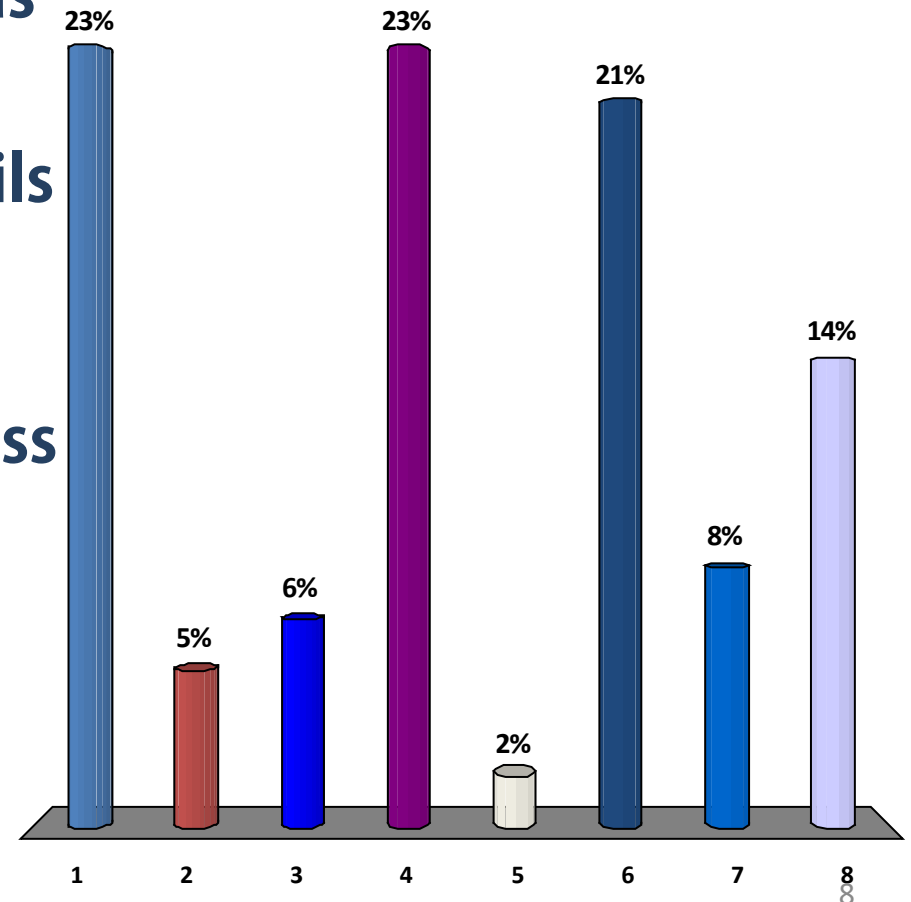
1. Repair streets & roads
2. Add more lanes on the roads
3. Improve bus service
4. Add & repair bike lanes, trails and sidewalks
5. Reduce roadway collisions
6. Improve air quality & address climate change
7. Reduce congestion
8. Serve disadvantaged & sensitive populations



What should we spend money on?

Second choice:

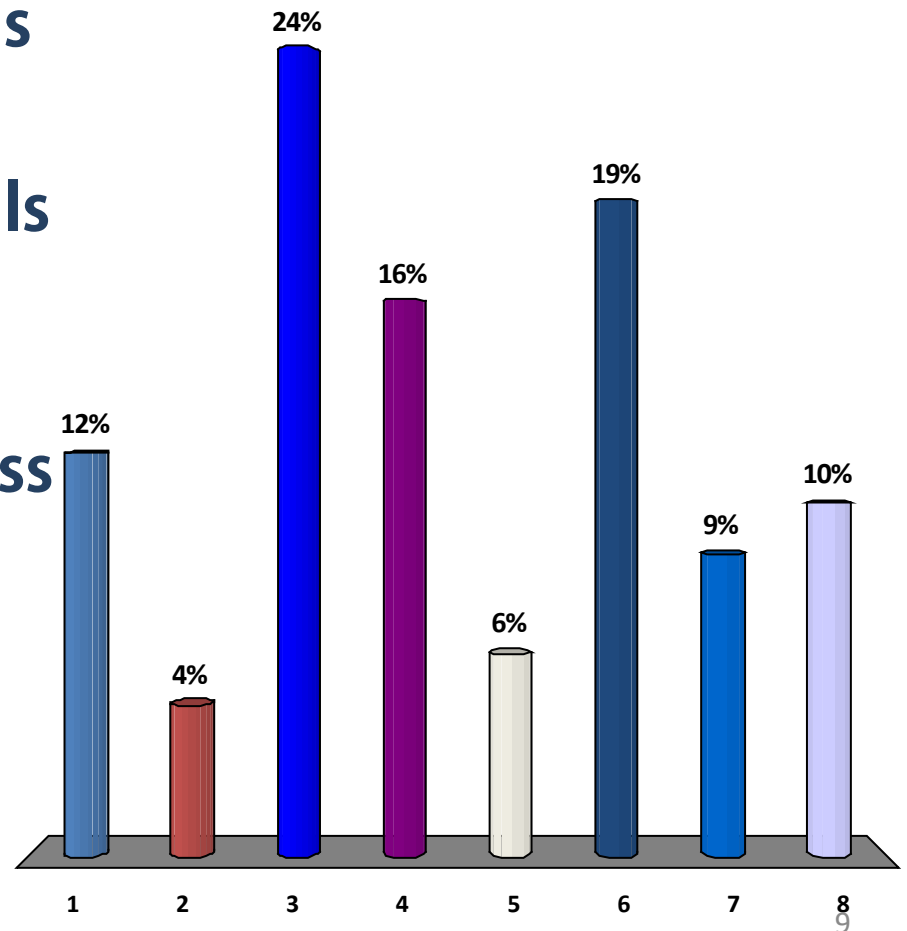
1. Repair streets & roads
2. Add more lanes on the roads
3. Improve bus service
4. Add & repair bike lanes, trails and sidewalks
5. Reduce roadway collisions
6. Improve air quality & address climate change
7. Reduce congestion
8. Serve disadvantaged & sensitive populations



What should we spend money on?

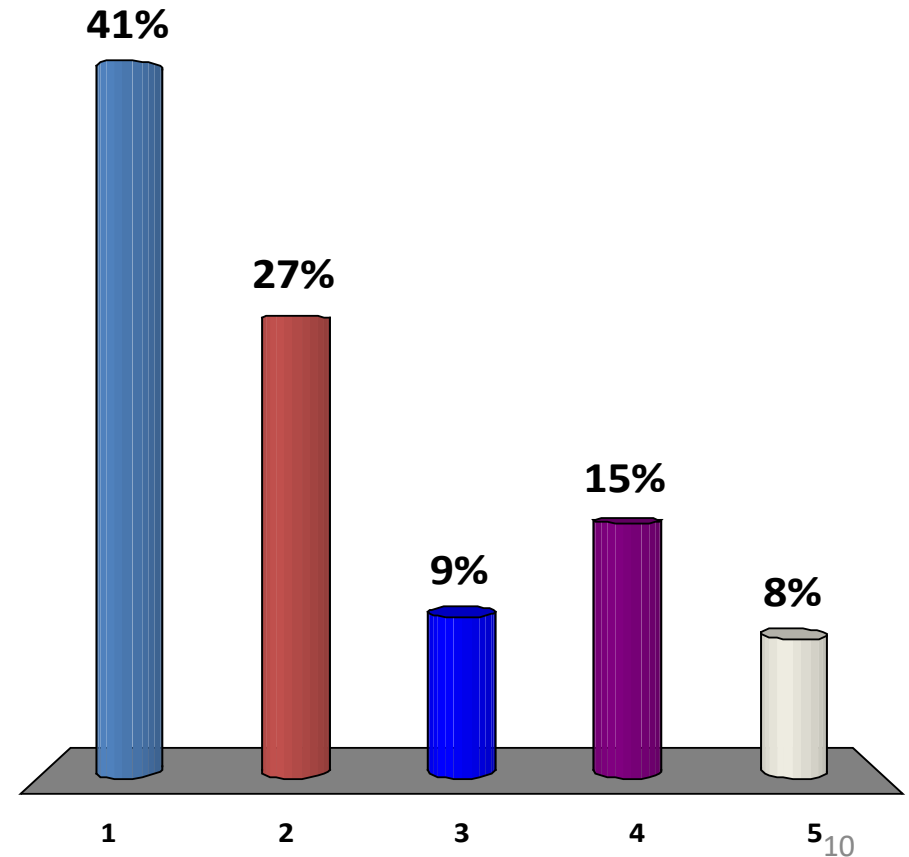
Third choice:

1. Repair streets & roads
2. Add more lanes on the roads
3. Improve bus service
4. Add & repair bike lanes, trails and sidewalks
5. Reduce roadway collisions
6. Improve air quality & address climate change
7. Reduce congestion
8. Serve disadvantaged & sensitive populations



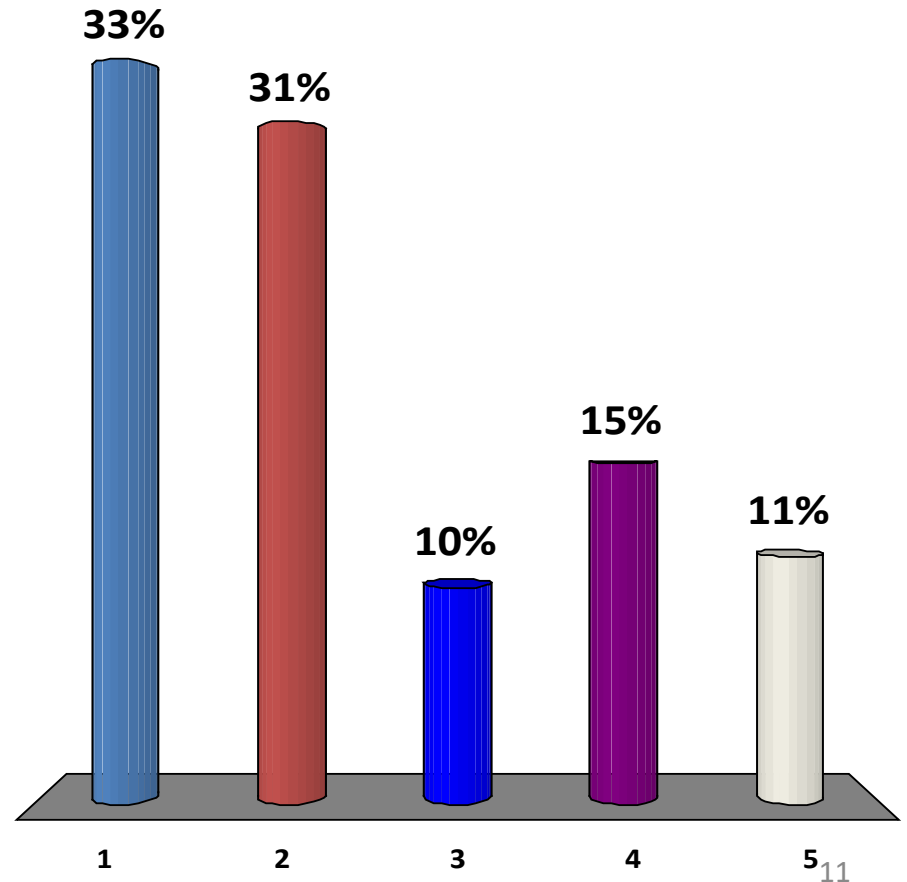
Should we actively try to change historical housing trends and move toward mixed-use development?

1. Absolutely
2. Yes
3. No preference
4. No
5. Definitely not



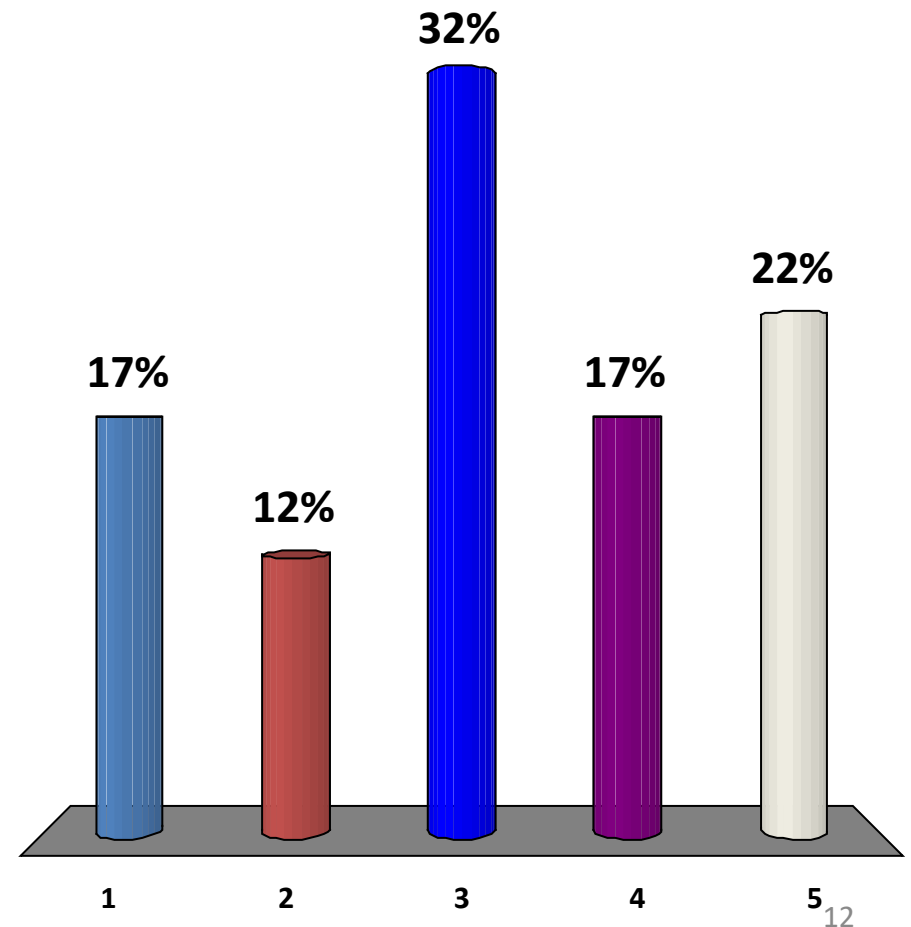
Should we favor higher-density housing for new development?

1. Absolutely
2. Yes
3. No preference
4. No
5. Definitely not



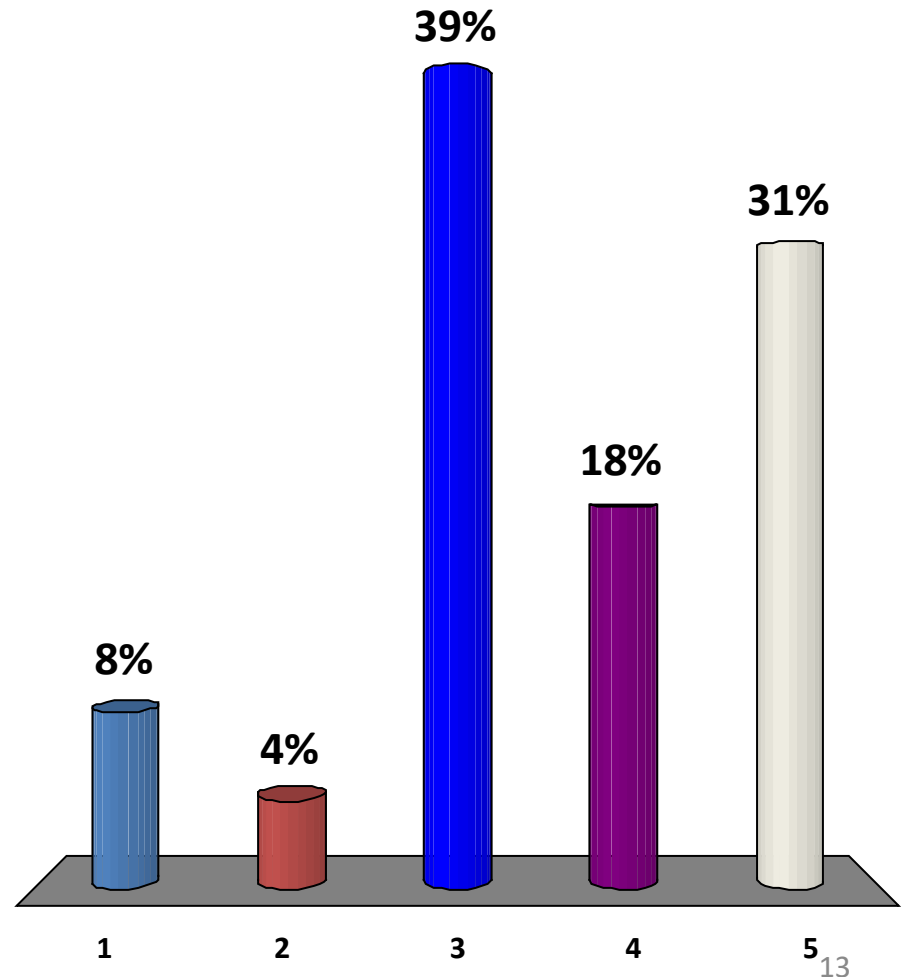
Should we prioritize development in certain areas? If so, where?

1. Strongly prioritize small, rural communities
2. Moderately prioritize small, rural communities
3. Balance investment between urban and rural areas
4. Moderately prioritize development near urban transit
5. Strongly prioritize development near urban transit



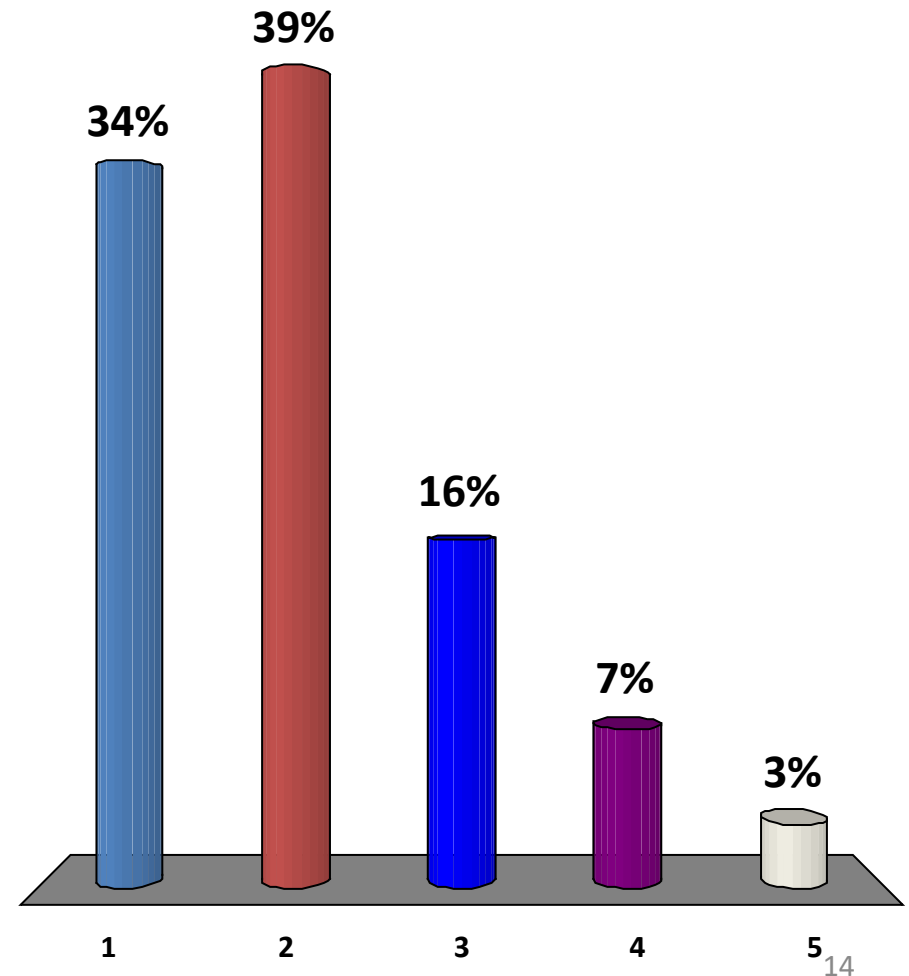
How should transit investments be used?

1. Strongly prioritize accessibility (adding more stops)
2. Moderately prioritize accessibility
3. Balance investment between accessibility and reliability
4. Moderately prioritize reliability (faster headways)
5. Strongly prioritize reliability



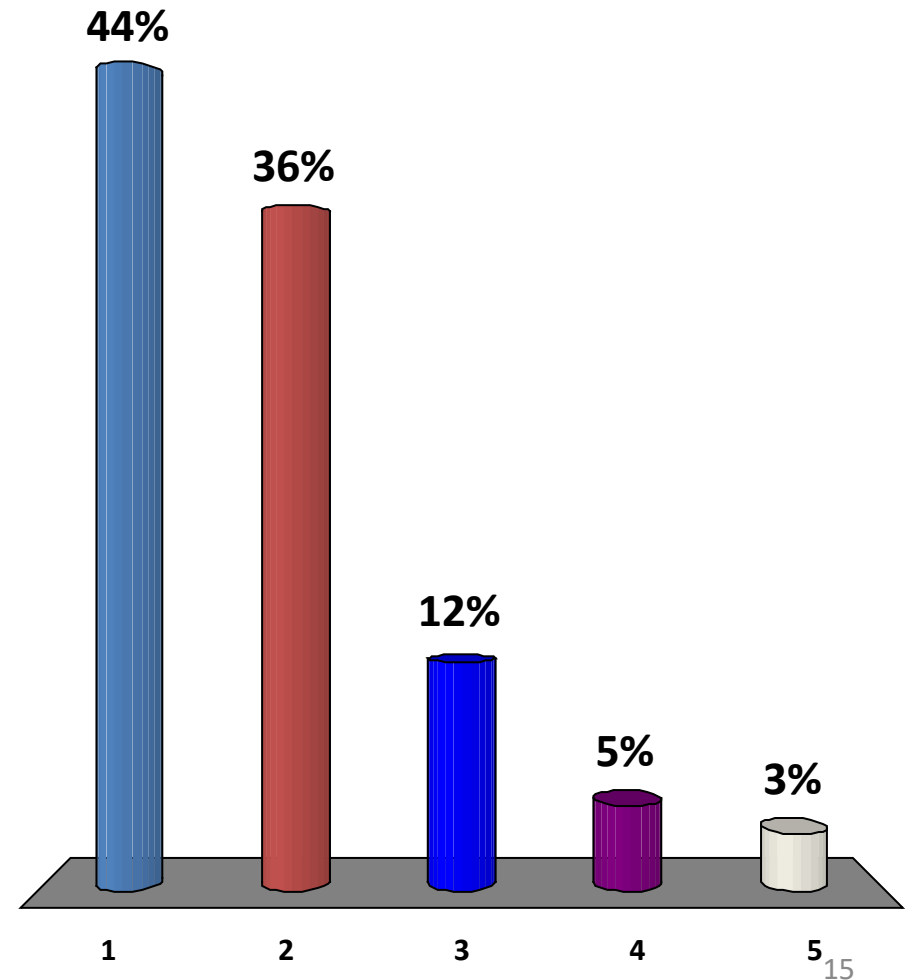
How would you rate Scenario A: “Invest in Existing Communities”?

1. Strongly support
2. Moderately support
3. No preference
4. Moderately oppose
5. Strongly oppose



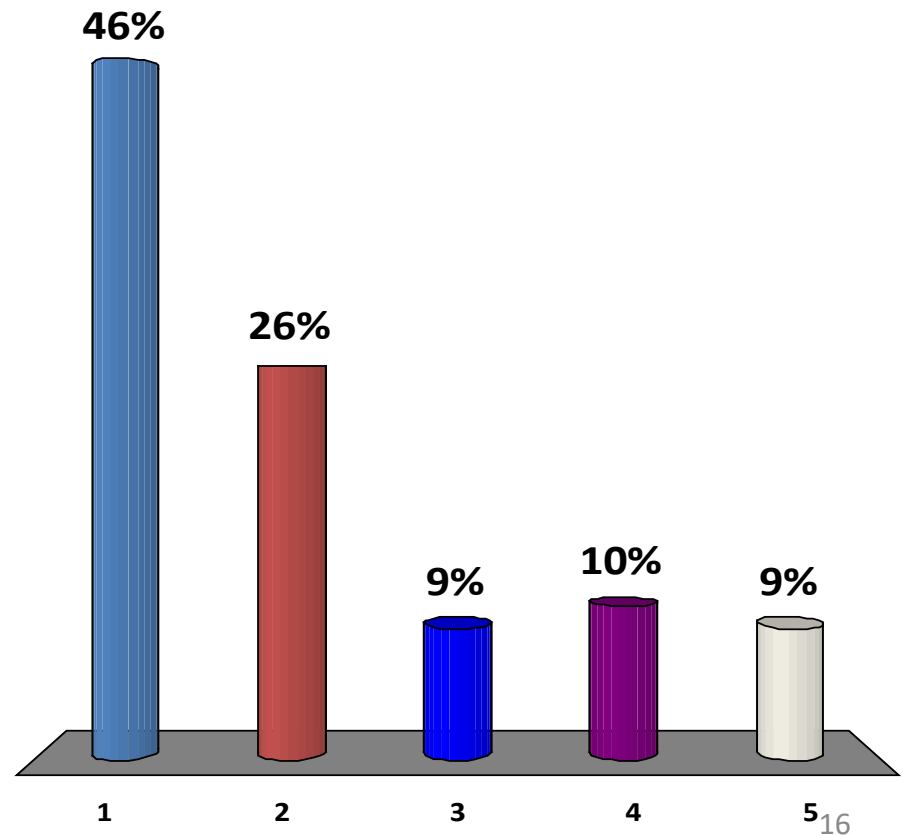
How would you rate Scenario B: “Transit-Oriented Development”?

1. Strongly support
2. Moderately support
3. No preference
4. Moderately oppose
5. Strongly oppose



How would you rate Scenario C: “Maintaining Existing Transportation Facilities”?

1. Strongly support
2. Moderately support
3. No preference
4. Moderately oppose
5. Strongly oppose



How would you rate Scenario D: “Active Transportation”?

1. Strongly support
2. Moderately support
3. No preference
4. Moderately oppose
5. Strongly oppose

