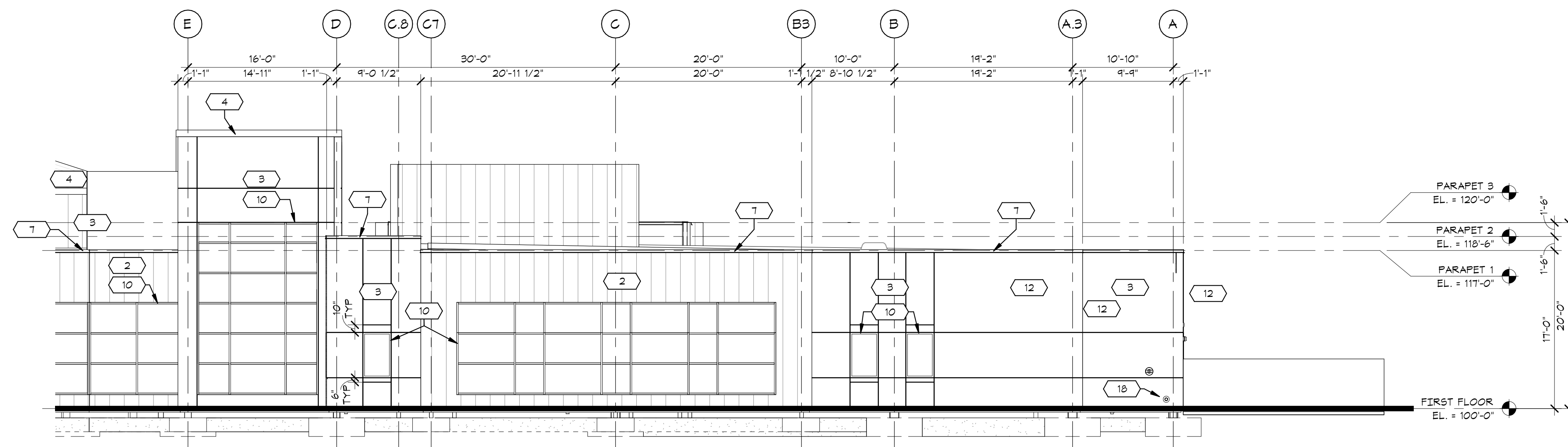
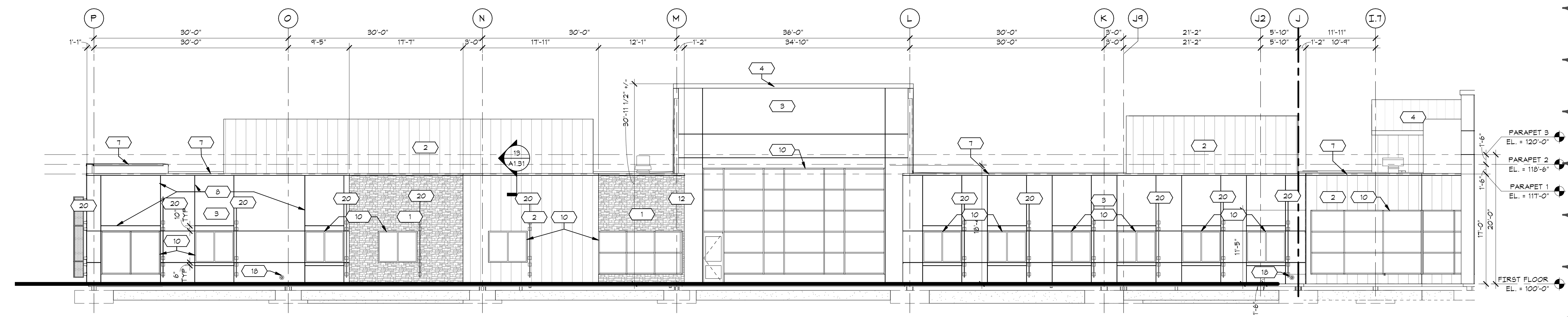


EXTERIOR ELEVATION KEYNOTES

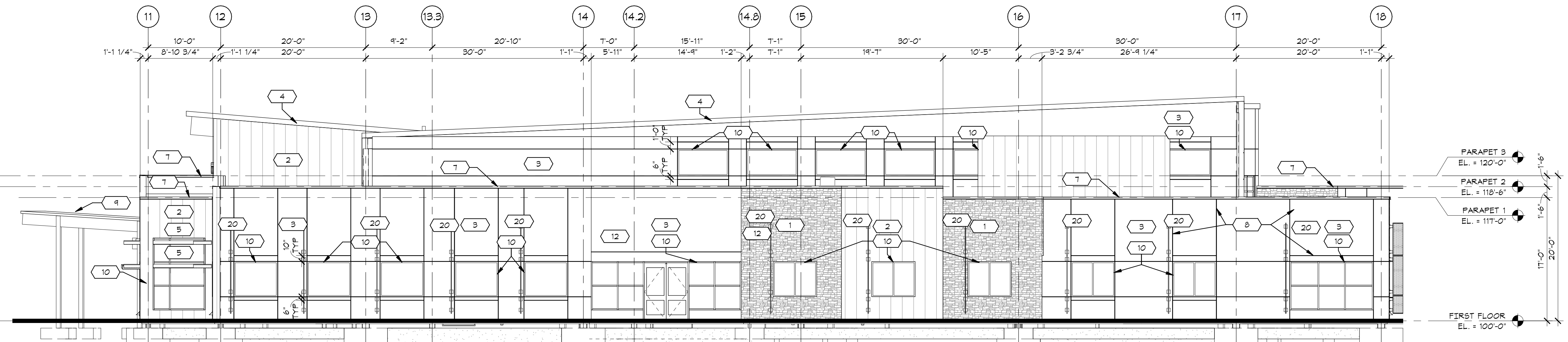
KEY NOTE NO.	EXTERIOR MATERIAL	MANUFACTURER	EXTERIOR COLOR NAME	DESCRIPTION
1	CAST STONE	ELDORADO STONE	CASTILLO LIMESTONE	
2	METAL PANEL	BERRIDGE	BUCKSKIN	VEE-PANEL
3	STUCCO	OMEGA PRODUCTS	SW1036 ACCESSIBLE BEIGE	
4	STANDING SEAM METAL ROOF	BERRIDGE	BUCKSKIN	ZEE-LOCK
5	SUNSHADE	KAYNEER	#40 DARK BRONZE	
6	ENTRY SIGN			
7	PREFINISHED METAL PARAPET CAP		#40 DARK BRONZE	
8	CONTROL JOINT	OMEGA PRODUCTS	N/A	
9	ROOF CANOPY			STANDING SEAM
10	STOREFRONT WINDOW	KAYNEER	#40 DARK BRONZE	
11	KNOX BOX		STAINLESS STEEL	6" FROM GRADE
12	LIGHT, REF. E5.11			
13	W.H. POP OFF DRAIN		STAINLESS STEEL	
14	W.H. PAN DRAIN		STAINLESS STEEL	
15	PROPOSED LOCATION OF GAS METER			TO BE PROVIDED BY P&E
16	BOOSTER BUMP	T.B. PUMP SYSTEMS		
17	HOSE BIB			
18	LAMB'S TONGUE	JAY R. SMITH	CAST BRONZE	12" ABOVE GRADE
19	FIRE ALARM BELL			
20	VERTICAL FIN		DARK BRONZE	



6 NORTHWEST ELEVATION
SR-A4.1 1/8" = 1'-0"



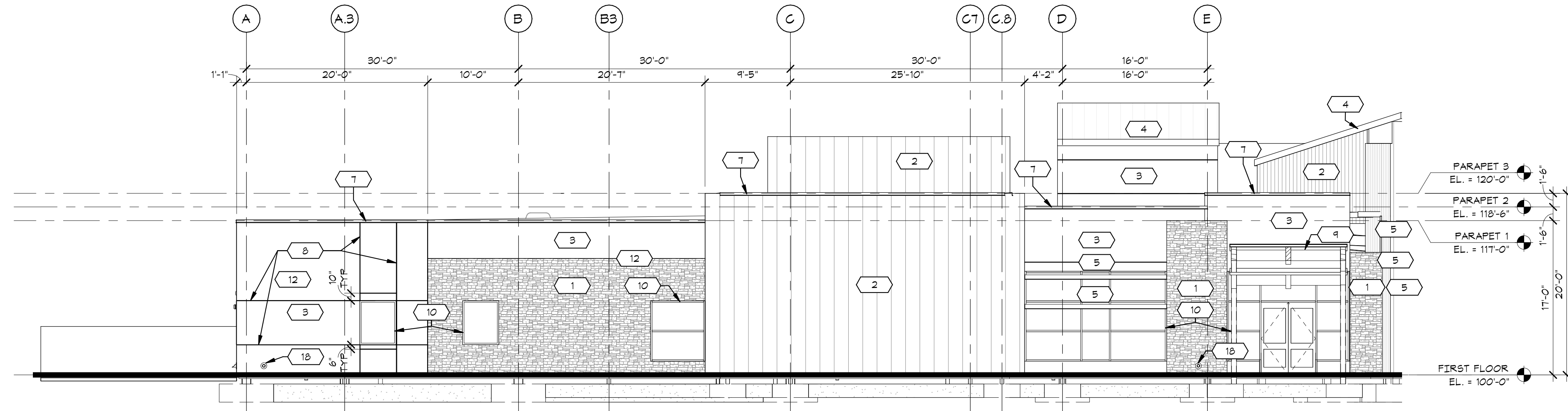
11 NORTH ELEVATION
SR-A4.1 1/8" = 1'-0"



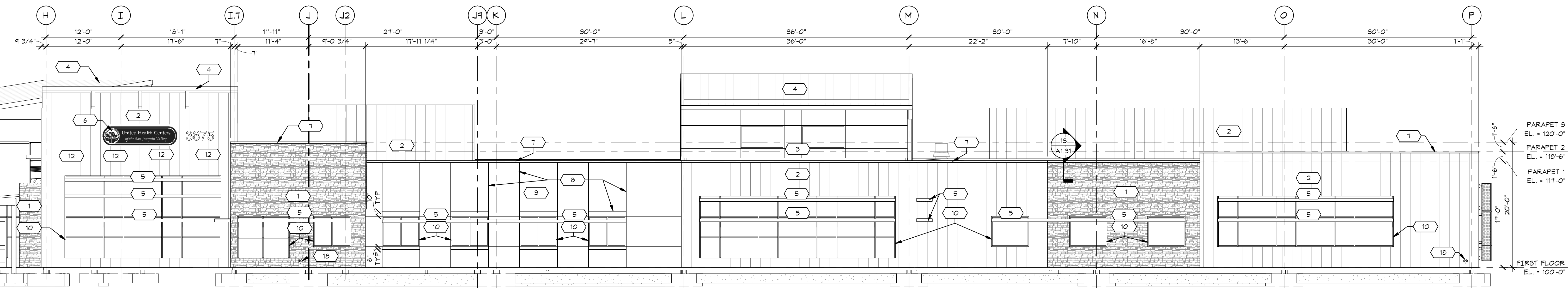
16 EAST ELEVATION
SR-A4.1 1/8" = 1'-0"

EXTERIOR ELEVATION KEYNOTES

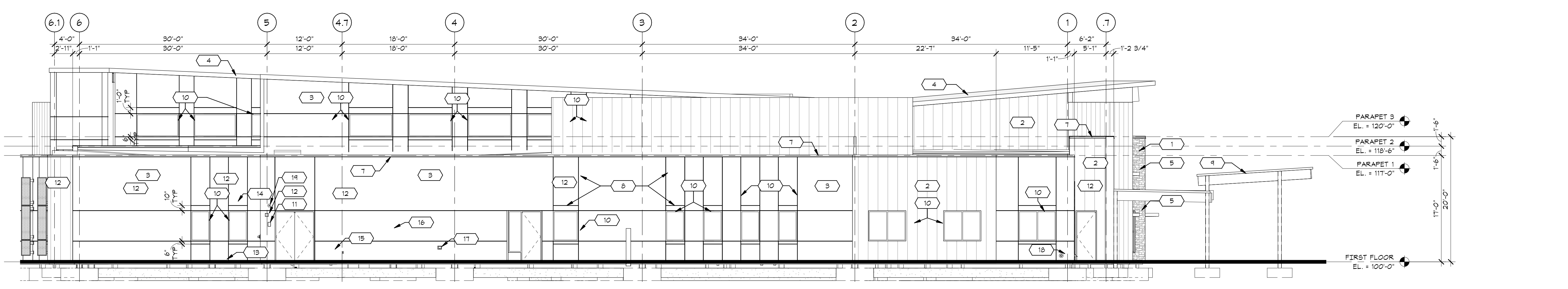
KEY NOTE NO.	EXTERIOR MATERIAL	MANUFACTURER	EXTERIOR COLOR NAME	DESCRIPTION
1	CAST STONE	ELDORADO STONE	CASTILLO LIMESTONE	
2	METAL PANEL	BERRIDGE	BUCKSKIN	VEE-PANEL
3	STUCCO	OMEGA PRODUCTS	SM1036 ACCESSIBLE BEIGE	
4	STANDING SEAM METAL ROOF	BERRIDGE	BUCKSKIN	ZEE-LOCK
5	SUNSHADE	KAYNEER	#40 DARK BRONZE	
6	ENTRY SIGN			
7	PREFINISHED METAL PARAPET CAP		#40 DARK BRONZE	
8	CONTROL JOINT	OMEGA PRODUCTS	N/A	
9	ROOF CANOPY			STANDING SEAM
10	STOREFRONT WINDOW	KAYNEER	#40 DARK BRONZE	
11	KNOX BOX		STAINLESS STEEL	6" FROM GRADE
12	LIGHT, REF. E5.11			
13	W.H. POP OFF DRAIN		STAINLESS STEEL	
14	W.H. PAN DRAIN		STAINLESS STEEL	
15	PROPOSED LOCATION OF GAS METER			TO BE PROVIDED BY P&E
16	BOOSTER BUMP	T.B. PUMP SYSTEMS		
17	HOSE BIB			
18	LAMB'S TONGUE	JAY R. SMITH	CAST BRONZE	12" ABOVE GRADE
19	FIRE ALARM BELL			
20	VERTICAL FIN		DARK BRONZE	



6 SOUTHEAST ELEVATION
SR-A4.2 1/8" = 1'-0"



11 SOUTH ELEVATION
SR-A4.2 1/8" = 1'-0"



16 WEST ELEVATION
SR-A4.2 1/8" = 1'-0"