

MEMORANDUM

DATE: May 15, 2018

TO: Fresno COG Social Service Transportation Advisory Council;
Fresno COG Transportation Technical Committee;
Fresno COG Policy Advisory Committee;
Fresno COG Policy Board; and
The General Public

FROM: Tony Boren, Executive Director

SUBJECT: STAFF REPORT AND RECOMMENDATIONS FOR "UNMET PUBLIC
TRANSPORTATION NEEDS" PUBLIC HEARING - APRIL 28, 2018

RECCOMENDATION

It is recommended the Fresno Council of Governments Policy Board find that there are no unmet public transportation needs, which are reasonable to meet within the County of Fresno.

DISCUSSION

On April 28, 2018, the Fresno Council of Governments (Fresno COG), as the Regional Transportation Planning Agency (RTPA) for Fresno County, held a legally noticed Public Hearing. The purpose of the hearing was receive public testimony to determine if public transportation needs within Fresno County will be reasonably met in Fiscal Year (FY) 2018-2019 (July 1, 2018, through June 30, 2019), prior to approving claims of Local Transportation Funds (LTF) for streets and roads. The time and place of the Public Hearing have been legally noticed as follows:

Date: April 28, 2018

Time: 5:30 p.m.

Place: Fresno Council of Governments, Sequoia Room
2035 Tulare St., Suite 201
Fresno, California 93721-2004

Transportation Development Act (TDA) - Local Transportation Funds are derived from the State Sales Tax. Of the State's portion of the sales tax revenue, 1/4 of a cent goes to the Local Transportation Fund and may be used for transportation projects. In FY 2018-2019, the estimated Local Transportation Funds for Fresno County are \$35,000,000, of which \$100,000 is programmed for administration and audits, and \$974,757 is programmed for regional transportation planning. Table-1 identifies the amount of project funding each local agency will receive in FY 2018-2019.

Of the Local Transportation Funds available for public transportation and streets and roads, priority must first be given to public transportation, the net difference is then available for street and road projects.

TABLE-1
Available TDA-Local Transportation Funds
For Projects by Local Agencies FY 2018-2019

Agency	Bicycle & Pedestrian Facilities	Social Service Transportation	Regional Transportation Planning	Public Transportation	Total
Clovis	\$77,624	\$199,425	\$108,402	\$3,382,163	\$3,756,815
Coalinga	\$11,901		\$16,620	\$535,790	\$564,227
Firebaugh	\$5,748		\$8,027	\$252,157	\$265,540
Fowler	\$4,269		\$5,961	\$193,097	\$203,345
Fresno City	\$368,514		\$514,631	\$16,861,026	\$17,755,918
Huron	\$5,036		\$7,033	\$220,974	\$232,702
Kerman	\$10,242		\$14,303	\$463,990	\$488,616
Kingsburg	\$8,647		\$12,075	\$379,614	\$399,762
Mendota	\$8,299		\$11,576	\$363,406	\$382,693
Orange Cove	\$6,566		\$9,169	\$303,341	\$319,441
Parlier	\$10,863		\$15,170	\$489,307	\$515,277
Reedley	\$18,328		\$25,595	\$826,197	\$870,047
Sanger	\$18,510		\$25,849	\$814,528	\$857,759
San Joaquin	\$2,852		\$43,983	\$130,990	\$137,942
Selma	\$17,630		\$24,620	\$775,111	\$816,249
Fresno County	\$122,981		\$171,743	\$5,525,452	\$5,818,712
FCRTA	\$0	\$512,107	\$0	\$0	\$506,607
FEOC	\$0	\$998,568	\$0	\$0	\$1,008,348
Total	\$698,000	\$1,710,100	\$974,757	\$31,517,143	\$34,900,000

Pursuant to Section 99401.5 of the California Public Utilities Code, Fresno COG, as the Regional Transportation Planning Agency, must make a finding after holding a Public Hearing that there are no unmet public transportation needs within the jurisdiction of claimants which can be reasonably met before it may approve Local Transportation Fund claims for streets and roads.

DEFINITION OF "UNMET TRANSIT NEEDS," AND "NEEDS THAT ARE REASONABLE TO MEET"

Section 99401.5(c) of the California Public Utilities Code specifies, "The transportation planning agency shall determine its definitions of the terms 'unmet transit needs' and 'reasonable to meet' for the purposes of this section which shall be documented by resolution or within the minutes of the agency."

The Fresno COG defined these terms by Resolution 1990-15 as follows:

A. Unmet Transit Needs

"Those public transportation or specialized transportation services that are identified in the Regional Transportation Plan and/or documented through the Fresno COG's Annual Unmet Transit Needs Public Hearing Process that have not been implemented or funded."

B. Reasonable to Meet

"Those public transportation services identified in the Regional Transportation Plan, or proposed amendment thereto, which meet the following criteria:"

- (1) Services which, if implemented or funded, would not cause the responsible operator or service claimant to exceed its appropriations limitation as set forth by Proposition 4 (Gann Limit)
- (2) Services which, if implemented or funded, would not cause the responsible operator to incur expenditures in excess of the maximum amount of:
 - (a) Local Transportation Funds and State Transit Assistance Funds which may be available for such operator to claim;
 - (b) Federal Transit Administration (FTA) funds or other support for public transportation services which are committed by Federal and/or State agencies by formula or tentative approval of specific grant requests; and
 - (c) Farebox and local funding in compliance with PUC Section 99268 et.seq.

The fact that an identified need cannot fully be met based on available resources shall not be the sole reason for finding a transit need is not reasonable to meet.

- (3) Services which, if implemented or funded, would result in the responsible operator or service claimant meeting the farebox

recovery and local support requirements as set forth by PUC Section 99268 et. seq. Evaluation of existing operators shall be based on records provided to Fresno COG by operators pursuant to the Transit Productivity Evaluation Process (PUC Section 99244)

Evaluation of proposed new service shall be based upon a feasibility analysis, which includes, but is not limited to:

- (a) Forecast of anticipated ridership if service is provided;
- (b) Estimate of capital and operating costs for the provision of such services;
- (c) Estimate of fares and local support in relation to estimated operating costs for providing such services; and
- (d) An estimated fare, which the Fresno COG Board would determine to be sufficient to meet farebox recovery requirements, but would not be so high it would pose a financial burden on transit dependent patrons.

SOCIAL SERVICES TRANSPORTATION ADVISORY COUNCIL (SSTAC)

The Fresno COG Policy Board established its Social Service Transportation Advisory Council (SSTAC) on May 26, 1988, to aid in its review of transit issues with emphasis on the annual identification of transit needs within Fresno County. These needs include the needs of transit dependent and transit disadvantaged persons, including the elderly, disabled, and persons of limited means. The Fresno COG's establishment of this Advisory Council is consistent with State Law (SB 498, Chapter 673, 1987), which mandates both the purpose and minimum membership of this body. A list of SSTAC members is included with this report (Attachment A).

The purpose of the SSTAC is to:

- (1) Annually participate in identification of transit needs (Unmet Transit Needs Public Hearing Process)
- (2) Review and recommend appropriate action by the Fresno COG for a jurisdiction which finds by resolution, that:
 - (a) There are no unmet transit needs;
 - (b) There are no unmet transit needs, which are reasonable to meet;
 - (c) There are unmet transit needs, which are reasonable to meet.

- (3) Advise the Fresno COG on any other major transit issues, including the coordination and consolidation of specialized transportation services.

SSTAC UNMET TRANSIT NEEDS PROCESS

The SSTAC has developed an annual process for soliciting unmet transit need comments from the public. Over 380 flyers with attached comment form are sent to agencies and individuals interested in providing feedback on their public transportation needs within Fresno County (Attachments B-1 and B-2). The electronic copy of the same flyer and comment form were sent to recipients of two different electronic newsletters. Within the 'Coming Up At Fresno COG' electronic newsletter, emails were sent to 1,317 people. The same email was sent to 2,000 recipients of the Fresno Metro Ministries electronic newsletter. The flyer and comment form was prepared in English and Spanish versions, and included a request for information regarding any unmet transit needs within Fresno County. Respondents were requested to include the following information to assist Staff in an initial evaluation of proposed services:

- Where new service is needed, and where the potential trips would start and end;
- When, and how often trips would need to be scheduled; and
- A description of the individuals needing the service including age group, financial constraints, and whether they have disabilities requiring special services.

As part of the information gathering process, SSTAC held three (8) public outreach meetings (Attachment C) and one (1) informal meeting with a community group to seek Unmet Transit Needs comments from residents throughout the County.

The first outreach meeting was held in the City of Mendota, on Tuesday, March 13, 2018, at Mendota City Hall at 643 Quince Street, Mendota, CA 93640. The location was selected to facilitate comments from the residents of the West Side of Fresno County including: Coalinga, Firebaugh, Huron, Kerman, Mendota, San Joaquin, and surrounding unincorporated communities. The meeting time was set for 5:00 p.m. While members of the Mendota City Council were present for their City Council meeting, there were no comments received regarding unmet transit needs.

The second meeting was held in the City of Selma on Monday, March 19, 2018 at Selma City Hall at 1710 Tucker Street, Selma, CA 93662. The location was selected to facilitate comments from the residents of the Eastside of Fresno County including: Fowler, Kingsburg, Orange Cove, Parlier, Reedley, Sanger, Selma, and the surrounding unincorporated communities. The meeting time was 5:30 p.m. Twenty eight people, including staff participated in the presentation. No comments were received at this meeting.

The third outreach meeting was held in the City of Clovis, on Tuesday, March 20, 2018, at the Clovis Senior Center, located at 850 Fourth Street, Clovis, CA 93612. The meeting location was set to facilitate comments from residents of the Clovis Metropolitan Area. The meeting time was set for 5:30 PM. Five people were present at this presentation, one of whom was a member of the public. No comments were received at this meeting.

One member of the community was present at this meeting, a local transit activist who was a new staff attorney with California Rural Legal Assistance, Inc., (CRLA). In this meeting, staff primarily spoke with this individual about the transit system in Fresno County and its history. Since this individual was new to the area, he did not have any specific issues with the transit system in Fresno County.

The fourth outreach meeting was held in the West Side of Fresno County, on Wednesday, March 21, 2018 at Kerman City Hall, 850 S. Madera Avenue, Kerman, CA 93630. The meeting location was selected to facilitate comments from residents of the West Side of Fresno County. The meeting time was set for 5:30 PM and no comments were received at this meeting.

The fifth outreach meeting was held in the Fresno Metropolitan Area on Wednesday, March 28, 2018 at the Central Valley Regional Center, 4615 N. Marty, Fresno, CA 93722. The meeting location was selected to facilitate comments from residents of the West Side of the Fresno Metropolitan Area. The meeting time was set for 5:30 PM. Representation from Leadership Council, an advocacy group was present and provided feedback regarding the communities of Daleville and Tombstone Territory in Fresno County. Their comments were noted.

One member of the community showed up for this particular meeting, a community activist for a local non-profit legal advocate. A long conversation was had with this individual where she requested transit service to a couple of disadvantaged communities she has been focusing on. These communities were in rural Fresno County and are included in Unmet Needs Matrix within this report.

The sixth outreach meeting was also held in the Fresno Metropolitan Area on Wednesday, April 4, 2018 at the Ted C. Wills Senior Center, 770 N. San Pablo, Fresno, CA 93728. The meeting location was selected to facilitate comments from residents in the Fresno Metropolitan area, primarily from the central Fresno and Downtown Area. The meeting time was set for 5:30 PM.

There were a total of four members of the community present at this meeting who were not representatives of a local transit agency. Two participants were people who said that they are frequent transit riders while the other two participants, were largely present acting as advocates on behalf of a group of transit riders. In this case, veteran residents of a State Veteran's home and disabled veterans.

The 1st comment was from a person who has been using the transit system for years. She talked of shorter headways along route 45 and more frequent service within Clovis on weekends.

The 2nd comment was also from a long-time transit rider. As a student, she said that she would like to see service to Willow International as she knows many students who have trouble getting to and from school because of a lack of transit service. She also said that she would very much like to see service integrated with Lyft or Uber for 'first' and 'last' mile type of service. Many communities are dangerous for female transit riders late at night. Having such a service would really go a long way towards helping many of our vulnerable transit riders.

The feedback received was not all negative. The last comment was from a local disabled veteran's advocate who claimed to be quite content with the service he has experienced. One of his many duties consists of helping veterans navigate the FAX transit system. He said that he is grateful for the support he has received as FAX staff has been very helpful in assisting him to help those that he serves.

Also held on April 4, 2018 was an informal meeting to talk about unmet transit needs with the Sikh community in Fresno County. Held at a local Sikh community center at 4827 N. Parkway Drive, Fresno, CA 93722, Jeff Long, a planner with FAX met with a small group of citizens that was facilitated by the Jakara Movement, a group representing the Sikh Community. Comments received are included in the unmet needs matrix.

The Seventh outreach meeting was held in the Fresno Metropolitan Area on Thursday, April 5, 2018 at Mosqueda Center, Room 8, located at 4670 E. Butler Ave., Fresno, CA 93702. The meeting location was selected to facilitate comments from residents of the South East Fresno Metropolitan Area. The meeting time was set for 5:30 PM. No comments were received at this meeting.

The final outreach meeting was held in the Eastside of Fresno County on Thursday, April 19, 2018 at Parlier City Hall. The address is 1100 Parlier Avenue, Parlier, CA 93648. The meeting location was set to facilitate comments from the residents of Eastern Fresno county. The meeting time was set for 5:30 p.m. No comments were received.

THE SSTAC's COMMENTS REGARDING SUBMITTED "UNMET TRANSIT NEEDS" REQUESTS

The SSTAC Chairman received four (4) written comments regarding perceived "Unmet Transit Needs". Copy of the actual letter and Staff response, if appropriate are attached to this Report. It is summarized as follows:

1. The first comment form received was from a customer of the Central Valley Regional Center (CVRC). Eugenie Brazil wrote saying that she would like for FAX to add a new routed across Herndon between Milburn and Villa Avenues. She noted that there were many elderly, handicapped, and students that would benefit from this service.
2. The second comment received was from a second customer of CVRC. Robin Ruth Ray wrote in saying that she has been impacted by the changes as a result of BRT. The stops along BRT are every .50 miles rather than every .25 miles as is the case with the FAX fixed route network. As a result, Mr. Ray has a longer distance to walk when visiting her dentist.
3. The third comment received was in the form of a letter from Mr. Hector Medina, Program Manager for the Department of Social Services for Fresno County. Fresno County is relocating all of their services provided through the Department of Social Services to the former Pelco campus that is serviced by route 45. Mr. Medina is asking that headways along route 45 decrease from 60 minutes to 30 minutes to better serve the needs of their customers.
4. The fourth comment received was also in the form of a letter from Mr. Hector Medina, Program Manager for the Department of Social Services for Fresno County. In his second letter, Mr. Medina spoke about the challenges that some of their rural transit-dependent customers experience. There were comments regarding service to four different locations, namely Reedley and Coalinga, Selma, Kerman and Metro Fresno.

Each of the actual comment letters/emails and Staff response letters are contained in the Fresno COG's "Unmet Transit Needs" Staff report, Attachment D, which is forwarded to the SSTAC for review, comment and recommendations.

The publicly noticed hearing to receive comments regarding potential unmet transit needs in Fresno County was held Thursday, April 28, 2018 starting at 5:30 pm at the Fresno COG Policy Board meeting. No comments were received.

To fulfill their role in making a recommendation to forward onto the Fresno COG Advisory Committees (TTC/PAC) and ultimately to the Fresno COG Policy Board, the SSTAC (following an expressed opportunity for public comment) made the following recommendation, based on its May 15, 2018 findings:

In consideration of these actions, and in reference to the contents of the Fresno COG's Regional Transportation Plan and supporting implementation documents, specifically:

- The Short Range Transit Plan for the Fresno-Clovis Metropolitan Area, 2018-2022;
- The Short Range Transit Plan for the Rural Fresno County Area, 2018-2022;
- The Consolidated Transportation Service Agency's (CTSA) Operations Program and Budget 20187-2019 for the Fresno Urban CTSA, the Clovis CTSA and the Fresno County Rural CTSA; and
- The Fresno County Rural Transit Agency's 2018-2019 Budget.

Based on public testimony at the legally noticed Public Hearing held before the Fresno COG's Policy Board on April 28, 2018, the SSTAC hereby has reached the following conclusion:

MOTION:

A motion was made by Carlos Duarte, and seconded by Amy Hance, to make the following recommendation:

The SSTAC, through its recent efforts to solicit comments, is therefore, recommending the finding that there are no unmet transit needs, which are reasonable to meet within the following jurisdictions:

- | | |
|----------------------|-------------------------|
| 1. City of Clovis | 9. City of Mendota |
| 2. City of Coalinga | 10. City of Orange Cove |
| 3. City of Firebaugh | 11. City of Parlier |
| 4. City of Fowler | 12. City of Reedley |
| 5. City of Fresno | 13. City of Sanger |
| 6. City of Huron | 14. City of San Joaquin |
| 7. City of Kerman | 15. City of Selma |
| 8. City of Kingsburg | 16. Fresno County |

The voice vote was taken and the motion passed unanimously.

PUBLIC TRANSPORTATION PLAN SUMMARY

A. Overview

The Regional Transportation Plan (RTP) for public transportation services contains a Fresno-Clovis Metropolitan Area (FCMA) component, a Fresno County Rural component, and a Social Service Transportation component. The Metropolitan Area component is actualized through the "Short-Range Transit Plan (FCMA SRTP) for the Fresno-Clovis Urbanized Area 2018 - 2022" adopted by the Fresno COG Policy Board on June 29, 2017. The next cycle of the Short-Range Transit Plan for the Fresno-Clovis Urbanized Area is scheduled to start development in early 2019.. It analyzes the metropolitan transit service needs and provides a detailed service plan for implementation over a five (5) year period. The Rural Area component is actualized through the "Short-Range Transit Plan (Rural SRTP) for the Fresno County Rural Area, also scheduled to start development in early 2019. It analyzes rural transit service needs, and provides a detailed service plan for implementation over a five-year period.

In addition to these Short-Range Transit Plans for public transportation, the Fresno COG annually adopts an Operations Program and Budget for the coordination and consolidation of transportation for specialized social service programs within Fresno County. The –2018 - 2019 "Operations Program and Budget for the Fresno CTSA, the Clovis CTSA, and the Rural CTSA" is scheduled for adoption on June 28, 2018.

It must be emphasized, in order to "reasonably meet transit needs," it is necessary to satisfy the planned service requirements documented by the Regional Transportation Plan components described above (Administrative Code Section 6656). Further, State law (Administrative Code Section 6651) prescribes that expenditure of Local Transportation Funds must be in conformance with the Regional Transportation Plan. Fresno COG's Legal Counsel has interpreted these two (2) State law requirements as establishing what must be done (i.e., implement the planned transit service as contained in the Regional Transportation Plan) and what must not be done (i.e., do not provide transit service where it is *not* recommended by the Plan).

These dual requirements may appear inconsistent to individuals and organizations who believe there may be needs for service in areas of Fresno County where the Regional Transportation Plan does not now propose service, or where less service is proposed than they would desire. The inconsistencies are overcome through a continuous transportation planning process. Those who testify an unmet transit need does exist can be assured either their desired service has previously been analyzed and found to be unreasonable to meet, or their proposal will be evaluated to determine if it will be reasonable to amend the Plan and provide the desired service.

B. Fresno-Clovis Metropolitan Area (FCMA)

The Regional Transportation Plan calls for fixed-route service within the Metropolitan Area to be provided by the City of Fresno's Fresno Area Express (FAX), with financial participation from the City of Clovis and Fresno County for service to non-Fresno City residents within FAX's Service Area. Demand responsive Handy-Ride service is provided through FAX under contract with Keolis Transit America. The Short-Range Transit Plan for the Fresno-Clovis Metropolitan Area sets forth the specific service implementation plan for the five (5) fiscal year period of 2018 to 2022. It is this Short-Range Transit Plan (SRTP) that actualizes the more general service goals and objectives of the Regional Transportation Plan. The next cycle of the CMA SRTP is scheduled to commence development in early 2019.

The Regional Transportation Plan and the FCMA Short-Range Transit Plan also continue to emphasize specialized service for disabled and elderly residents who are unable to utilize the fixed-route buses.

The estimated cost for operation of FAX in FY 2018-2019 is \$58.3 million. Service will be funded with \$27.4 million in State Transportation Development Act - Local Transportation Funds. FAX is also anticipating \$10.5 million in Measure C, and an additional \$9.6 million will be funded by the Federal Transit Administration. The remaining funds are derived from farebox revenues and special services provided under contracts with outside agencies such as the City of Clovis and Valley Children's Hospital. Although the City of Fresno does not propose to expend any Local Transportation Funds on streets and roads in FY 2018, a "transit needs finding", is necessary to be consistent with SB-498. SB-498 states the lack of available resources shall *not* be the sole reason for finding a transit need is *not* reasonable to meet.

The City of Clovis operates two types of public transit service. Clovis Stageline provides general public fixed-route service within the City Limits. Clovis Round Up operates specialized demand-responsive service for the elderly and disabled residents. The City of Clovis has designated Round Up services as the Consolidated Transportation Services Agency (CTSA) for the Clovis Transit Service Area. The estimated cost for operation of Clovis Transit in FY 2018-2019 is \$5,300,000 million. The City of Fresno does not propose to expend any Local Transportation Funds on streets and roads in FY 2018, a "transit needs finding", is necessary to be consistent with SB-498. SB-498 states the lack of available resources shall *not* be the sole reason for finding a transit need is *not* reasonable to meet.

C. Rural Areas

The Regional Transportation Plan calls for service to rural portions of Fresno County, including intra-city service in and around thirteen (13) rural incorporated cities, two dozen unincorporated communities, and inter-city service linking those cities to the Fresno Metropolitan Area on the following corridors:

- (1) Firebaugh - Mendota - San Joaquin - Kerman Corridor to Fresno
- (2) Kingsburg - Selma - Fowler Corridor to Fresno
- (3) Orange Cove - Reedley - Parlier - Sanger Corridor to Fresno
- (4) Coalinga - Huron – Five Star - Five Points - Lanare - Riverdale - Caruthers - Raisin City - Easton Corridor to the Fresno

During the latter part of FY1978-1979 and the beginning of FY1979-1980, in cooperation with rural incorporated cities in Fresno County, Fresno COG prepared and adopted specific short-range transit development programs to define implementation of rural public transportation service in conformance with the Regional Transportation Plan. In September 1979, Fresno County Rural Transit Agency (FCRTA) was formed and assigned responsibility for implementing the service requirements of the Regional Transportation Plan as set forth by the Transit Development Programs. Services set forth by the Regional Transportation Plan and the Transit Development Programs were fully implemented by mid-February 1980.

A comprehensive Short-Range Transit Plan (Rural SRTP) for the Rural Fresno County Area, which updated the individual Transit Development Programs, was first adopted on November 17, 1983. The five (5) year Rural SRTP is updated biannually. The latest update of the "Short-Range Transit Plan for the Rural Fresno County Area 2018-2022" was adopted on June 29, 2017. The estimated cost for the operation of the FCRTA in FY 2018-2019 is \$8,038,763. The Services will be funded with \$5,426,788 of State Transportation Development Act - (TDA) Local Transportation Funds (LTF). The FCRTA will utilize \$743,266 from its Measure – C funds to support the operations. An additional \$1,121,429 will be funded by the Federal Transit Administration (FTA). Farebox receipts are projected to be \$647,880 and Interest is estimated at \$99,400.

D. Social Service Transportation

The updated Social Service Transportation Action Plan and Inventory, was adopted January 29, 1998, and continues to co-designate the City of Fresno and the Fresno Economic Opportunities Commission (FEOC) as the Fresno Urban Consolidated Transportation Service Agency (CTSA). The Action Plan further designates City of Clovis, as the Clovis CTSA, and the Fresno County Rural Transit Agency (FCRTA) and the FEOC as the Fresno Rural Area CTSA. The Fresno COG has set aside each year, since FY1982-1983, five percent (5%) of Local Transportation Funds (Table 1) for social service transportation. An Operations Program and Budget (OPB) have been prepared for the Fresno Urban CTSA, Clovis CTSA, and the Fresno Rural CTSA. The FY2018-2019 OPB's, is scheduled for adoption on June 28, 2018, document commitments for matching funds from participating social service agencies and defines the types of coordinated/consolidated services to be provided so funds may be released. FCRTA has notified FEOC of their intention to put the contract for the Fresno

Rural Area CTSA out to bid. FCRTA is in the process of soliciting proposals for the contract.

Fresno County's CTSA process has been very successful in coordinating metropolitan and rural social service transportation needs. The Fresno COG's latest annual "Transit Productivity Report 2016-2017" indicates the CTSA's continue to provide a significant number of trips throughout Fresno County. An inventory of social service agencies was updated, as part of the development of the Fresno COG's Human Service Coordination Plan, as adopted January 29, 2015. It has assisted in determining if additional social service agencies may be interested in participating in the CTSA process.

Analysis of Proposed Public Transportation Services and Recommended Findings for - Local Agencies FY 2017-2018

A. City of Clovis

The City of Clovis contributes funds to the operation of three (3) transit services within its jurisdiction. First, it operates the Clovis CTSA Round Up service on a demand-responsive basis to its elderly and disabled social service clients. Second, it operates Clovis Stageline to serve general public patrons with four (4) coordinated fixed routes; and third, it provides funding to Fresno Area Express (FAX) which operates fixed route service on Route 9 into Clovis.

Inter-city service to Fresno is available on Clovis CTSA's Round Up and Fresno Area Express / Handy-Ride.

Recommendation:

It is recommended the Fresno COG Policy Board find that public transportation needs within the City of Clovis will be reasonably met. Service requirements contained within the Regional Transportation Plan will be satisfied.

B. City of Coalinga

The City of Coalinga, under an inter-agency agreement with the FCRTA, provides intra-city and inter-city service using vehicles owned by the FCRTA. All FCRTA vehicles are lift equipped for elderly and disabled accessibility.

The Coalinga Transit intra-city demand responsive service operates with one (1) vehicle during an approximate eight (8) hour service period Monday through Friday.

Coalinga Transit also provides inter-city fixed route service, with route deviation to pick-up disabled passengers, between Coalinga and Fresno. The vehicle provides one (1) round trip through Pleasant Valley Prison, Huron, Five Points, Lanare, Riverdale, Caruthers, Raisin City, and Easton, during an approximate nine and $\frac{3}{4}$ (9.75) hour period, Monday through Saturday.

Recommendation:

It is recommended the Fresno COG Policy Board find that public transportation needs within the City of Coalinga, Sphere of Influence, and surrounding Area will be reasonably met. Service requirements contained in the Regional Transportation Plan will be satisfied.

C. City of Firebaugh

The City of Firebaugh, under an inter-agency services agreement with the FCRTA, provides Demand responsive service within Firebaugh's Sphere of Influence, and surrounding Area is available by a FCRTA's lift equipped vehicle, Monday through Friday for approximately nine and $\frac{3}{4}$ (9.75) hours per day. A second vehicle is available for inter-city trips between Firebaugh and Mendota during an approximate nine (9) hour period, Monday through Friday.

The FCRTA also contracts to operate Westside Transit as a multiple round trip general public commuter service, during eight and a half (8-1/2) hour period, Monday through Friday, using a lift equipped vehicle, which may deviate from its route to pick-up disabled passengers. The service is provided on a scheduled fixed route to serve patrons "between" Firebaugh, Mendota, San Joaquin and surrounding communities, Kerman, and "to" and "from" Fresno.

Recommendation:

It is recommended the Fresno COG Policy Board find that public transportation needs within the City of Firebaugh, its Sphere of Influence, and surrounding area will be reasonably met. Service requirements contained in the Regional Transportation Plan will be satisfied.

D. City of Fowler

The City of Fowler, under an inter-agency services agreement with the FCRTA, provides transportation services within its Sphere of Influence and surrounding area. A lift equipped FCRTA vehicle is the community service the area, approximately nine and $\frac{3}{4}$ (9.75) hours per day, Monday through Friday.

The FCRTA also contracts to operate Southeast Transit as a multiple round trip general public commuter service, for approximately eight and a half (8-1/2) hour period, Monday through Friday, using a lift equipped vehicle, which may deviate from its route to pick-up disabled passengers. The service is provided on a scheduled fixed route to serve patrons "between" Kingsburg, Selma, and Fowler and "to" and "from" Fresno.

Recommendation:

It is recommended the Fresno COG Policy Board find that public transportation needs within the City of Fowler, its Sphere of Influence, and surrounding area will be

reasonably met. Service requirements contained in the Regional Transportation Plan will be satisfied.

E. City of Fresno

Fresno Area Express (FAX) provides fixed route service seven (7) days-a-week throughout the Fresno-Clovis Metropolitan Area. The City of Clovis and Fresno County financially participate for service to non-Fresno City residents within Fresno Area Express' Service Area. Fresno Area Express contracts with Keolis Transit America for weekday and weekend demand-responsive service on Handy-Ride. This service is oriented toward those who are unable to use the fixed-route service.

Recommendation:

It is recommended the Fresno COG Policy Board find that public transportation needs within the City of Fresno will be reasonably met. Service requirements contained within the Regional Transportation Plan will be satisfied.

F. City of Huron

The City of Huron, under an inter-agency services agreement with the FCRTA, provides general public transportation service within the Sphere of Influence, and surrounding area utilizing two (2) FCRTA wheelchair accessible modified vehicles. The intra-city services are available, during an approximate eight (8) hour period, Monday through Friday.

The City of Huron continues to provide funding for an inter-city "life-line" service to Coalinga. Three (3) round trips are provided during an eight (8) hour period, Monday through Friday.

Coalinga Transit also provides inter-city fixed route service, with route deviation to pick-up disabled passengers, between Coalinga and Fresno. The vehicle provides one (1) round trip through Pleasant Valley Prison, Huron, Five Points, Lanare, Riverdale, Caruthers, Raisin City and Easton, during an approximate nine and $\frac{3}{4}$ (9.75) hour period, Monday through Saturday.

Recommendation:

It is recommended the Fresno COG Policy Board find that public transportation needs within the City of Huron, its Sphere of Influence, and surrounding area will be reasonably met. Service requirements contained in the Regional Transportation Plan will be satisfied.

G. City of Kerman

The City of Kerman, under an inter-agency services agreement with the FCRTA, provides demand responsive public transportation service with a FCRTA vehicle within its Sphere of Influence and surrounding area using a lift equipped FCRTA vehicle, for approximately eight (8) hours a day, Monday through Friday.

The FCRTA also contracts to operate Westside Transit as a multiple round trip general public commuter service, for approximately eight and a half (8-1/2) hour period, Monday through Friday, using a lift equipped vehicles, which may deviate from its route to pick-up disabled passengers. The service is provided on a scheduled fixed route to serve patrons "between" Firebaugh, Mendota, San Joaquin and surrounding unincorporated communities, and Kerman and "to" and "from" Fresno.

Recommendation:

It is recommended the Fresno COG Policy Board find that public transportation needs within the City of Kerman, its Sphere of Influence, and surrounding area will be reasonably met. Service requirements contained in the Regional Transportation Plan will be satisfied.

H. City of Kingsburg

Two (2) FCRTA wheelchair lift equipped vehicles are available for providing public transportation services to Kingsburg Area residents. These transit services are provided to the City of Kingsburg under an inter-agency services agreement with FCRTA. Service within the Sphere of Influence, and surrounding area, are available on a demand responsive basis during an approximately eight (8) hour service period, Monday through Friday and approximately eight (8) hours on Saturday utilizing just one (1) vehicle.

The FCRTA also contracts to operate Southeast Transit as a multiple round trip general public commuter service, during an approximately eight and a half (8-1/2) hour period, Monday through Friday, using a lift equipped vehicle, which may deviate from its route to pick-up disabled passengers. The service is provided on a scheduled fixed route to serve patrons "between" Kingsburg, Selma, and Fowler and "to" and "from" Fresno.

Recommendation:

It is recommended the Fresno COG Policy Board find that public transportation needs within the City of Kingsburg, its Sphere of Influence, and surrounding area will be reasonably met. Service requirements contained in the Regional Transportation Plan will be satisfied.

I. City of Mendota

The City of Mendota, under an inter-agency agreement with the FCRTA, provides demand responsive service within its Sphere of Influence and surrounding area using a FCRTA lift equipped vehicle. This service is provided Monday through Friday, for approximately ten (10) hours per day.

Firebaugh Transit has a second vehicle, which is available for inter-city trips between Firebaugh and Mendota during an approximate nine (9) hour period, Monday through Friday.

The FCRTA also contracts to operate Westside Transit as a multiple round trip general public commuter service, during an approximately eight and a half (8-1/2) hour period, Monday through Friday using a lift equipped vehicle, which may deviate from its route to pick-up disabled passengers. The service is provided on a scheduled fixed route to serve patrons "between" Firebaugh, Mendota, San Joaquin and surrounding unincorporated communities, and Kerman and "to" and "from" Fresno.

Recommendation:

It is recommended the Fresno COG Policy Board find that public transportation needs within the City of Mendota, its Sphere of Influence, and surrounding area will be reasonably met. Service requirements contained in the Regional Transportation Plan will be satisfied

J. City of Orange Cove

The City of Orange Cove, under an inter-agency services agreement with the FCRTA, provides transportation services within its Sphere of Influence and surrounding area using a FCRTA lift equipped vehicle. Orange Cove Transit operates on a demand responsive basis area for approximately ten (10) hours per day, Monday through Friday.

Orange Cove Transit also provides a lift equipped vehicle for inter-city fixed route service. The service is provided on a scheduled fixed route to serve patrons "between" Orange Cove, Reedley, Parlier, Sanger, and "to" and "from" Fresno. Multiple round trips are available each service day. The inter-city service is provided, during an approximately ten (10) hour period, Monday through Friday.

Recommendation:

It is recommended the Fresno COG Policy Board find that public transportation needs within the City of Orange Cove, its Sphere of Influence, and surrounding area will be reasonably met. Service requirements contained in the Regional Transportation Plan will be satisfied.

K. City of Parlier

The City of Parlier, under an inter-agency services agreement with the FCRTA, currently operates a lift equipped demand responsive service within its Sphere of Influence, and surrounding area using a wheelchair lift equipped FCRTA vehicle. Service is currently provided, during an approximate eight (8) hour period, Monday through Friday.

The FCRTA also contracts to operate Orange Cove Transit as a multiple round trip general public commuter service, during an approximately ten (10) hour period, Monday through Friday, using a lift equipped vehicle, which may deviate from its route to pick-up disabled passengers. The service is provided on a scheduled fixed route to serve patrons "between" Orange Cove, Reedley, Parlier, and Sanger and "to" and "from" Fresno.

Recommendation:

It is recommended the Fresno COG Policy Board find that public transportation needs within the City of Parlier, its Sphere of Influence, and surrounding area will be reasonably met. Service requirements contained in the Regional Transportation Plan will be satisfied.

L. City of Reedley

The City of Reedley, through an inter-agency services agreement with the FCRTA, provides demand responsive public transportation within its Sphere of Influence and surrounding area, using four (4) vehicles on an eight (8) hour staggered basis during an approximate eight (8) hour service period, Monday through Friday, and one (1) vehicle on Saturdays during an approximate eight (8) hour period.

The FCRTA also contracts to operate Orange Cove Transit as a multiple round trip general public commuter service, during an approximately ten (10) hour period, Monday through Friday using a lift equipped vehicle, which may deviate from its route to pick-up disabled passengers. The service is provided on a scheduled fixed route to serve patrons "between" Orange Cove, Reedley, Parlier, and Sanger and "to" and "from" Fresno.

Recommendation:

It is recommended the Fresno COG Policy Board find that public transportation needs within the City of Reedley, its Sphere of Influence, and surrounding area will be reasonably met. Service requirements contained in the Regional Transportation Plan will be satisfied.

M. City of Sanger

To provide public transportation service within the Sanger Sphere of Influence and the surrounding area, the FCRTA, under an inter-agency services agreement, with the City of Sanger operates two (2) wheelchair accessible FCRTA vehicles that offer service in Sanger. The vehicles provide staggered service during an approximate eight (8) hour period and one (1) vehicle provides service during an eleven and half (11.5) hour period, Monday through Friday, and one (1) vehicle during an eight (8) hour period on Saturday.

FCRTA also contracts to operate Orange Cove Transit as a multiple round trip general public commuter service, during approximate ten (10) hour period, Monday through Friday, using a lift equipped bus, which may deviate from its route to pick-up disabled passengers. The service is provided on a scheduled fixed route to serve patrons "between" Orange Cove, Reedley, Parlier, and Sanger and "to" and "from" Fresno.

An additional vehicle began providing service between Sanger and Reedley College in September of 2014 to support a new training program to address a critical concern by manufacturers in Sanger who have been unsuccessful at finding skilled workers to employ and residents in Sanger who are underemployed or unemployed. The new program is being designed in cooperation with the new President of Reedley College and the manufacturing companies. One (1) vehicle provides route service during a ten (10) hour period, Monday through Friday.

Recommendation:

It is recommended the Fresno COG Policy Board find that public transportation needs within the City of Sanger, its Sphere of Influence, and surrounding area will be reasonably met. Service requirements contained in the Regional Transportation Plan will be satisfied.

N. City of San Joaquin

The City of San Joaquin, under an inter-agency agreement with the FCRTA, provides for demand responsive Intra-City service within their Sphere of Influence and surrounding area. Inter-community service is also provided between the unincorporated communities of: Cantua Creek, El Porvenir, Halfway, Three Rocks, and Tranquility. Inter-City service to Kerman is also available. These services are provided, during a ten (10) hour period, Monday through Friday using an FCRTA lift equipped vans.

The FCRTA contracts to operate Westside Transit as a multiple round trip general public commuter service, during approximate eight and a half (8-1/2) hour period, Monday through Friday, using a lift equipped vehicle, which may deviate from its route to pick-up disabled passengers. The service is provided on a scheduled fixed route to serve patrons "between" Firebaugh, Mendota, San Joaquin and surrounding unincorporated communities, and Kerman and "to" and "from" Fresno.

Recommendation:

It is recommended the Fresno COG Policy Board find that public transportation needs within the City of San Joaquin, its Sphere of Influence, and the surrounding area with its identified unincorporated communities will be reasonably met. Service requirements contained in the Regional Transportation Plan will be satisfied.

O. City of Selma

The City of Selma, under an inter-agency agreement with the FCRTA, provides for demand responsive and fixed route Intra-City service within their Sphere of Influence and surrounding area.

This service utilizes four (4) FCRTA wheelchair accessible vehicles. It operates four (4) vehicles on a demand responsive basis for eight (8) hours each on a staggered basis, and one (1) for four (4) hours for lunch time driver relief, Monday through Friday, during an approximate eight (8) hours service day. Saturday demand responsive services are provided with a single (1) vehicle during an approximate eight (8) hour service period.

The FCRTA also contracts to operate Southeast Transit as a multiple round trip general public commuter service, during approximate eight and a half (8-1/2) hour period, Monday through Friday using a lift equipped vehicle, which may deviate from its route to pick-up disabled passengers. The service is provided on a scheduled fixed route to serve patrons "between" Kingsburg, Selma, and Fowler and "to" and "from" the Fresno-Clovis Metropolitan Area (FCMA).

Recommendation:

It is recommended the Fresno COG Policy Board find that public transportation needs within the City of Selma, its Sphere of Influence, and surrounding Area will be reasonably met. Service requirements contained in the Regional Transportation Plan will be satisfied.

P. Fresno County

Fresno County financially participates through the Fresno County Rural Transit Agency for provision of service to unincorporated area residents within the Spheres of Influence and surrounding areas of the thirteen (13) rural cities and two dozen unincorporated communities situated on established fixed routes.

Fresno County also provides the funding for six (6) other unincorporated area transit services.

Auberry Transit is provided, through an inter-agency service agreement between the FCRTA and the Fresno Economic Opportunities Commission (FEOC). The service area includes the communities of: Alder Springs, Auberry, New Auberry, the Big Sandy Indian Rancheria, Burrough Valley, Cold Springs Indian Rancheria,

Jose Basin, Marshall Station, Meadow Lakes, Mile High, Prather, Sycamore, and Tollhouse. A lift equipped vehicle provides, approximately six (6) hours of service per day, Monday through Friday. A second Auberry Transit vehicle is to provide “life-line” inter-city service from the foothill communities and through Friant and the Table Mountain Indian Rancheria to the Fresno-Clovis Metropolitan Area, one (1) day a week during an eight (8) hour service period.

Del Rey Transit operates as a general public demand responsive service. The FCRTA continues to fund the service four (4) hours per service day and Fresno County TDA monies fund the remaining four (4) hours. The service is under contract for driver services through the FCRTA and continues to be available during an approximate eight (8) hour period Monday through Friday. The operation will continue to maintain priority service to seniors attending the mid-day Hot Meal Nutrition Program. The service transports passengers within the community on a shared ride basis; arranges passenger grouping for trips to Sanger; and transfers passengers in Sanger to access Orange Cove Transit for service to Fresno, Parlier, Reedley, and Orange Cove.

Dinuba Connection is in its fifth (5th) year of service. In cooperation with the FCRTA, the City of Dinuba (in Tulare County) provides an inter-County service, referred to as the Dinuba Connection, between Dinuba and Reedley (in Fresno County). It allows Dinuba residents to travel from their City and its Vocational Training Center to the Adventist Medical Center (for on-the-job training) and to attend Reedley College. Eastern Fresno County residents travel to regional retail and entertainment centers in Dinuba. The service has proven to be very successful. The operations encourage transfers between Reedley Transit’s Intra-City services and Orange Cove Transit’s Inter-City services, to facilitate connectivity between Orange Cove, Reedley, Parlier, Sanger and Fresno. Both entities will continue to utilize a portion of their locally approved half cent sales tax (Measure R in Tulare County and Measure C in Fresno County) to continue to split the costs of this transit expansion program

Laton Transit continues to be provided by the FCRTA through an ongoing inter-agency services agreement with Kings Area Rural Transit (KART). Round trip, inter-community service between the unincorporated Community of Laton and the City of Hanford, in Kings County, is available Monday through Friday. An existing inter-County service by KART from Hanford through Laton and then Selma (Kaiser Clinic) and Hospitals in Fresno and the Central Valley Children’s Hospital in Madera County is provided Monday through Friday.

Rural Transit between remote areas of Fresno County has been mentioned in the Regional Transportation Plan and Rural Short Range Transit Plan (SRTP) for many years. The Measure-C Expenditure Plan referenced the concept for funding and implementation. Service beyond the current transit service areas associated with incorporated cities has been difficult to justify. Four (4) vehicles were purchased to facilitate the operation of three (3) in regular services, Monday through Friday, with the fourth (4th) reserved as a back-up vehicle. The adopted Rural SRTP reflects the demand responsive operation to be available on a twenty-four (24) hour prior reservation basis. Transfers to existing operations have

eliminated service duplications.

Shuttle Transit is to address another transit need. For many years, it has become evident that when riders from rural Cities arrive in Fresno they have problems utilizing the fixed route services of Fresno Area Express (FAX) to get to their destinations, conduct their business and return back downtown to catch their return bus back to their respective rural City. Frail elderly and disabled have significant problems attempting to qualify as a user of the Handy Ride services. Those wanting to get to an employment opportunity, educational institution, training program, medical appointment or other facility learn that it is nearly impossible to rely on public transportation.

The Federal Transit Administration (FTA) recognized the problem nationwide, and sought to address the matter. They created another Program that is called Job Access / Reverse Commute (JARC). Initially it sought competitive applications, and selected a few for partial funding for a one (1) year demonstration period. The applicant was responsible for the funding in subsequent years. It really was not attractive to small rural operators with very limited funding in the first place.

With the passage of Measure-C, the FCRTA has an opportunity to implement a supportive program. The FCRTA has four (4) inter-City subsystems that provide service to the Fresno Metropolitan Area. They include: Coalinga Transit (from Coalinga, Huron, Five Points, Lanare, Riverdale, Caruthers, Raisin City, and Easton); Orange Cove Transit (from Orange Cove, Reedley, Parlier, and Sanger); Southeast Transit (from Kingsburg, Selma, and Fowler); and Westside Transit (from Firebaugh, Mendota, Kerman, with connections from San Joaquin).

The Shuttle services are intended to meet the inter-City buses as they arrive in Fresno. The fares would be the same as FAX, \$1.25 per one-way trip. The riders could call the current Centralized Dispatch phone number 1-800-325-7433 to arrange service. The FCRTA has four (4) vehicles, three (3) primary and one (1) back-up. The service began July of 2015.

Recommendation:

It is recommended the Fresno COG Policy Board find that public transportation needs within the unincorporated portions of the County of Fresno will be reasonably met. Service requirements contained in the Regional Transportation Plan will be satisfied.

Additional Information

It should be noted additional transit needs are being met through three (3) other programs, which have been implemented with Measure – C funds. The Fresno COG administers the programs:

- Carpooling - A subsidized carpooling program is available for individuals willing to share rides with others. A computerized program may assist individuals in

making successful contacts to form successful arrangements to conveniently share rides.

- Commuter Vanpooling – A subsidized vanpooling program is available for a group of individuals who may have common interests in commuting for employment or schooling at City Colleges and Universities. Several commercial entities have complete programs to provide vans ranging from seven (7) to fifteen (15) passenger capacities. A lead and back-up driver volunteer to make arrangements to transport the group as needed. The vehicle, fuel, maintenance, and insurance are covered. Participants share in a portion of the costs. Several hundred vehicles are currently in operation, and more are being formed on a regular basis.
- Farm Labor Vanpooling – A subsidized farm labor vanpooling program facilitates group transportation to field and packing facilities. The program is flexible to meet the seasonal needs of the workers, originating in Fresno County. Fifteen (15) passenger vans accommodate seven (7) to fifteen (15) individuals. A lead and back-up driver volunteer to make arrangements to transport the group as needed. The vehicle, fuel, maintenance, and insurance are covered. Participants share in a portion of the costs. Several hundred vehicles are currently in operation, and more are being formed on a regular basis.

Individuals and groups desiring to know more about these programs should call 559-441-RIDE (7433) or contact www.valleyrides.com for more information.

Demographic Information

Transit Dependent Groups

Per the Transportation Development Act, Unmet Transit Needs findings must include an annual assessment of the size and location of identifiable groups likely to be transit dependent. Including but not limited to, the elderly, the disabled, including individuals eligible for paratransit and other special transportation services pursuant to Section 12143 of Title 42 of the United States Code, and persons of limited means, including, but not limited to, recipients under the CalWORKs program.

For the purposes of this document:

- Elderly are considered to be individual's age 65 years old and older.
- The terms "disability" refers to persons who because of physical or mental impairment are unable to drive automobiles or use public transit which is not specifically tailored to meet their needs.
- Persons of limited means are considered having incomes below the poverty threshold as defined by the federal government.

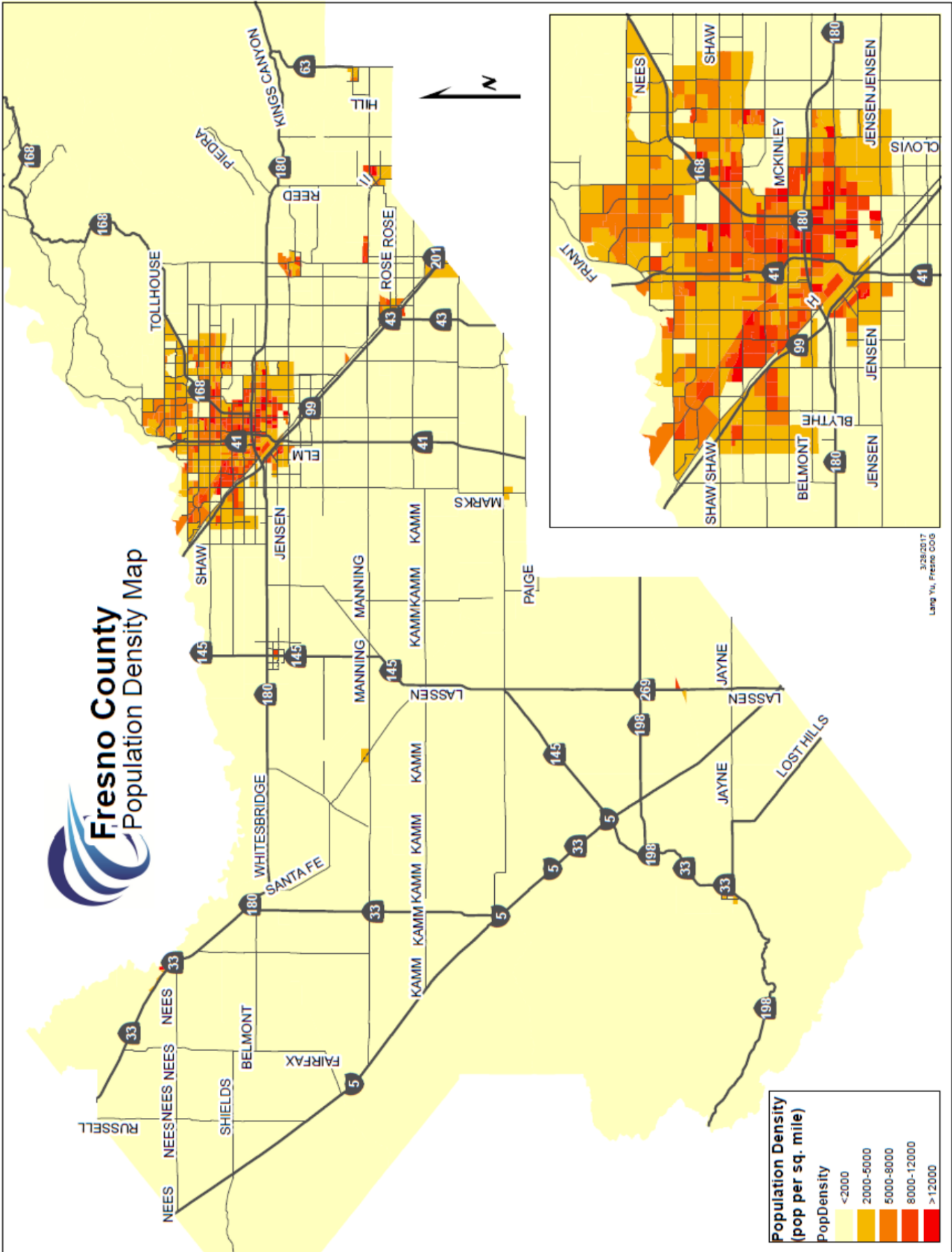
Demographic Data - Charts and Highlights

The determination of the size and location of identifiable groups likely to be "transit dependent" is based on the American Community Surveys, 2010 Census, and other pertinent data. The demographic data relevant to determining unmet transit needs in Fresno County is presented in the form of tables and maps.

The American Community Survey replaced the decennial census long form in 2010. The long-form previously collected decennially, will now collect detailed questions about socioeconomic and housing characteristics on an annual basis. The function of the decennial census will be to provide counts of people for the purpose of congressional apportionment and legislative redistricting. The primary purpose of the ACS is to measure the changing social and economic characteristics of the U.S. population. The use of the ACS data in this chapter will provide “snapshots” of our region’s socioeconomic characteristics. The decision to select one-year, three-year, or five-year ACS “snapshots” is dependent on whether the intent is to reflect the most current data (e.g., one-year ACS) or a statistically more accurate “snapshot” (e.g., lower margin of error) over a larger period of time.

In this section, Table 2 presents an overview of the population in Fresno County. Figure 1 illustrates graphically how the population is dispersed throughout the incorporated and unincorporated areas in Fresno County.

Fresno County Population Density



The most rapid population increase between the 2000 and 2010 Census occurred in the City of Kerman with over a 67% growth. Other western Fresno County cities with significant increases were Coalinga (45%), Mendota (44%), and Firebaugh (40%). The metropolitan area of Fresno and Clovis also had significant growth increases of 19% and 51% respectively.

The City of Clovis now has a population in excess of 100,000 people. Pursuant to Senate Bill 716 (enacted 2009), cities with a population of 100,000 or more within a county that has a population of 500,000 or more will be required to expend 100% of the Local Transportation Funds (LTF) apportionment for public transit purposes. The City of Clovis has already been compiling with this requirement.

Population forecasts suggest that none of the other incorporated cities in Fresno County will exceed 100,000 in the next 20 years and therefore will be exempt from the provisions of Senate Bill 716. The California Department of Finance annual city and county population estimates will be used to identify when the population threshold has been met. SB 716 represents a fundamental change in the manner in which public transit will be financed in the future.

Table 2
Total Population and Percent Change

Planning Area	Population			% Change	% Annual Change
	2000	2010	2015 (ACS)	2010 - 2015	2000 - 2015
City of Clovis	66,468	95,631	100,437	5.03%	51.11%
City of Coalinga	11,668	13,380	16,940	26.61%	45.18%
City of Firebaugh	5,743	7,549	8,084	7.09%	40.76%
City of Fowler	3,979	5,570	6,006	7.83%	50.94%
City of Fresno	427,652	494,665	510,451	3.19%	19.36%
City of Huron	6,306	6,754	6,792	0.56%	7.71%
City of Kerman	8,551	13,544	14,285	5.47%	67.06%
City of Kingsburg	9,199	11,382	11,681	2.63%	26.98%
City of Mendota	7,890	11,014	11,402	3.52%	44.51%
City of Orange Cove	7,722	9,078	9,565	5.36%	23.87%
City of Parlier	11,145	14,494	14,870	2.59%	33.42%
City of Reedley	20,756	24,194	25,092	3.71%	20.89%
City of San Joaquin	3,270	4,001	4,008	0.17%	22.57%
City of Sanger	18,931	24,270	24,700	1.77%	30.47%
City of Selma	19,444	23,219	24,017	3.44%	23.52%
County of Fresno	170,683	171,705	168,419	-1.91%	-1.33%
Total	799,407	930,450	956,749	2.83%	19.68%

Table 4 presents 2011-2015 American Community Survey (ACS 5-year) data on population, by age and income characteristics. This data is important to this analysis because studies have shown that age and income have a high correlation with automobile usage and transit dependency. Persons age 65 and over are separated as a subset of the total population figures. In some jurisdictions, these individuals become eligible for transit services solely based on their age. In others, they qualify for reduced fares because of their age. In either case, they are recognized as a select group of people who may have special transportation needs met through public transportation.

Poverty statistics in ACS products adhere to the standards specified by the Office of Management and Budget in Statistical Policy Directive 14. The Census Bureau uses a set of dollar value thresholds that vary by family size and composition to determine who is in poverty. Further, poverty thresholds for people living alone or with nonrelatives (unrelated individuals) vary by age (under 65 years or 65 years and older). The poverty thresholds for two-person families also vary by the age of the householder. If a family's total income is less than the dollar value of the appropriate threshold, then that family and every individual in it are considered to be in poverty. Similarly, if an unrelated individual's total income is less than the appropriate threshold, then that individual is considered to be in poverty.

Table 4
Age and Income, Year 2015

Jurisdiction	Population 2015	Persons: Age 65 +	% Total Pop.	Persons: Low Income	% Total Pop.	Persons: Age 65+ & Low Income	% Total Pop.
City of Clovis	100,437	11,758	11.7%	13,731	13.7%	800	0.8%
City of Coalinga	16,940	1,116	6.6%	2,857	16.9%	84	0.5%
City of Firebaugh	8,084	409	5.1%	2,708	33.5%	63	0.8%
City of Fowler	6,006	661	11.0%	1,505	25.1%	28	0.5%
City of Fresno	510,451	50,349	9.9%	149,592	29.3%	6,732	1.3%
City of Huron	6,792	451	6.6%	2,432	35.8%	175	2.6%
City of Kerman	14,285	1,119	7.8%	3,646	25.5%	100	0.7%
City of Kingsburgh	11,681	1,481	12.7%	2,065	17.7%	117	1.0%
City of Mendota	11,402	680	6.0%	5,255	46.1%	180	1.6%
City of Orange Cove	9,565	477	5.0%	5,069	53.0%	127	1.3%
City of Parlier	14,870	980	6.6%	6,251	42.0%	238	1.6%
City of Reedley	25,092	2,792	11.1%	6,616	26.4%	264	1.1%
City of San Joaquin	4,008	179	4.5%	2,171	54.2%	97	2.4%
City of Sanger	24,700	2,578	10.4%	5,671	23.0%	561	2.3%
City of Selma	24,017	2,613	10.9%	5,793	24.1%	395	1.6%
Unincorporated Area	168,419	26,472	15.7%	36,825	21.9%	2,813	1.7%
Total	956,749	104,115	10.9%	252,187	26.4%	12,774	1.3%

Table 5 provides data on individuals with disabilities by gender and age. This information is from the 2011-2015 ACS data includes non-institutionalized persons, age 5 and older, who have a "disability." Individuals were asked if they, or others in the household, had a health condition that has lasted for 6 or more months which makes it difficult to go outside of the home alone. Persons that have such a difficulty as a result of a health condition are said to have a mobility limitation. Increased public transportation would be an asset to those who have a mobility limitation.

Table 5
Gender By Age By Disability

Fresno County	Estimate	% over Total	Fresno County	Estimate	% over Total
Total Population	956,749	100.0%	Total Population	956,749	100.0%
Male	477,316	49.9%	Female	479,433	50.1%
Under 5	40,416	4.2%	Under 5	39,027	4.1%
With a Disability	206	0.0%	With a Disability	237	0.0%
No Disability	40,210	4.2%	No Disability	38,790	4.1%
5 to 17	101,033	10.6%	5 to 17	96,999	10.1%
With a Disability	6,253	0.7%	With a Disability	3,587	0.4%
No Disability	94,780	9.9%	No Disability	93,412	9.8%
19 to 64	281,499	29.4%	19 to 64	284,765	29.8%
With a Disability	31,805	3.3%	With a Disability	32,217	3.4%
No Disability	249,694	26.1%	No Disability	252,548	26.4%
65+	45,096	4.7%	65+	56,518	5.9%
With a Disability	18,985	2.0%	With a Disability	23,724	2.5%
No Disability	26,111	2.7%	No Disability	32,794	3.4%
Total Male with Disability	57,249	6.0%	Total Male with Disability	59,765	6.2%
Total Population with a Disability	117,014	12.2%			

Table 6 expands on the number of individuals in Fresno County between the ages of 19 and 64 by their disability and employment status. The 2011-2015 ACS data identifies that 566,264 residents are between the ages of 19 and 64 and that approximately 64,022 (6.7 percent) have a disability. Of those with a disability, 29.4 percent are employed, 8.5 percent are unemployed, and 59.4 percent are not in the workforce. Those residents without a disability make up 88.7 percent of those between the ages of 18 and 64. Of this group 65.4 percent are employed, 8.9 percent are unemployed, and 20.1 percent are not in the workforce.

Table 6
Employment Status By Disability

Population 19 to 64	Number	% of Pop
Total	566,264	59.2%
With a Disability	64,022	6.7%
Employed	18,812	29.4%
Unemployed	5,462	8.5%
Not in Labor Force	38,047	59.4%
No Disability	502,242	88.7%
Employed	328,617	65.4%
Unemployed	44,520	8.9%
Not in Labor Force	101,181	20.1%

Fresno COG's definition of transit dependent focuses on individuals who, by virtue of their age, income, or disability, are not adequately served by the automobile. Information from the last available version of a summary from Caltrans entitled "Travel and Related Factors in California" was used as a foundation for identifying the incidence of individuals that are transportation-dependent.

According to the California Department of Motor Vehicles (DMV), in 2015 there were 561,764 driver licenses issued in Fresno County. This number represents approximately 74 percent of the population age 16 years and older. This means that approximately 26 percent of eligible drivers in Fresno County did not have a driver's license. In 2011, there were 515,837 licensed drivers, approximately 75 of the population 16 and older. The percentage of eligible drivers that do not have driver's licenses remained relatively flat between 2011 and 2015.

Overall, this information reflects the slight decrease in licensed drivers. The decrease could be contributed to many factors such as birth and death rate, changes in family income, disabled individuals, migration of residents in or out of the county, or the availability of public transportation. Ultimately, the need for more public transportation continues to be necessary.

Table 7
Licensed Drivers in Fresno County

Age	Population 2015	% of Total Pop
0-15	247,798	25.9%
16-18	29,659	3.1%
18+	679,292	71.0%
All	956,749	100.0%

Table 9
Occupied Household / Vehicles in Fresno County, Year 2015

Total Housing Units	321,955
Total Occupied Housing Units	296,305
Average # of Occupants	1.81
No. of Vehicles in Fresno County	522,264
Average # of Vehicles per Household	1.62
Average # of Drivers per Household	1.74

Unmet Transit Needs Matrix of Comments Received and Responses

NO	JURISDICTION	PUBLIC COMMENT	OPERATOR RESPONSE	UNMET NEED
1	Fresno	There is no bus service down McKinley and west through the airport business zone. Nobody from east of the airport can take a bus to work timely.	McKinley Avenue was not identified in the recent FAX Restructure project as a viable transit corridor east of Blackstone.	N
2	Sanger	add connecting service to Fresno fax	Currently there is an existing service for this area. FCRTA will be implementing an express route starting in Orange Cove and going into Fresno with a stop in Sanger, this will address this issue. A direct bus route is not feasible.	N
3	Fresno	Route 45 needs shorter headways.	Recommendations for increased frequencies on this route were provided by the FAX Restructure. Additional funding will be required to implement this type of service.	N
4	Fresno	Willow International needs bus service. Many people are having trouble getting to and from school.	FAX and Clovis Community College are partnering to provide shuttle service between the CCC campus and River Park At River Park, passengers can take one of 5 routes to continue their trip.	N
5	Fresno	Service to the Veteran's Home is desperately needed. Veterans are watching this development very closely and may start getting more vocal about their needs.	FAX and the Veteran's Administration is working on a plan to address this issue.	N
6	Fresno	Route 9 into Clovis ends at 3 PM on Saturdays and Sundays. Would be great to be able to make service longer	Clovis Transit is preparing for a comprehensive route study and redesign project. All bus stops, routes, and potential destinations will be evaluated.	N
7	Fresno	Wrap service in Route 34 at G Street at 7 O'Clock rather than 6:30, primarily Northbound. "This is a way to encourage economic growth."	FAX recently improved frequencies on weekends through a grant funded program. Additional funding was not available to increase service later at night.	N
8	Tombstone Territory	Central Ave., between Bethel and Greenwood	FCRTA's rural transit service is currently available. FCRTA plans to work on a study to expand the rural transit service.	N
9	Fresno County, Daleville	Central Ave., East of Cherry	FCRTA's rural transit service is currently available. FCRTA plans to work on a study to expand the rural transit service.	N

10	Fresno	Need service to Inspiration Park	Service in this area has been studied in the FAX Restructure Project. Recommendations have been made to extend service west to Hayes Ave. and to Inspiration Park	N
11	Fresno	Need service to N. Friant Road	North Friant Road was not identified in the recent FAX Restructure project as a viable transit corridor.	N
12	Fresno	Need service to West Fig Garden Drive.	West Fig Garden Drive is an area identified through the Short Range Transit Plan for improved service when funding becomes available.	N
13	Fresno	Need bus service to Cesar Chavez after 11:00	Service is provided till approximately 12:30am via BRT on route 1. Service can be accessed at the Divisadero Station.	N
14	Fresno	There is no service after 6:00 PM on Route 26.	Route 26 operates till approximately 9:30 pm weeknights and 7:00pm on weekends.	N
15	Fresno	Return service along Route 30 to El Dorado	Route 28 serves the El Dorado stops.	N
16	Selma	Challenges for transportation in Selma include clients wanting to travel from Selma to Parlier and Reedley, but there are no options for that. Reedley office has passes to go to Parlier but it's not available in Selma.	FCRTA currently has the Kingsburg to Reedley College route offering inter-city service pickups and drop offs in Selma, Parlier, and Reedley. There is also intra-city service available in Parlier, Reedley and Sanger. Orange Cove inter-city transit also provides inter-city service through Orange Cove, Reedley, Parlier, Sanger and Fresno (response letter sent).	N
17	Kerman	Westside Inter-City Transit only provides service to Firebaugh, Mendota & Kerman it doesn't include San Joaquin or Tranquility. There is only one pick up time in the AM and one drop off in the PM for each of the cities listed. The fare is different for one way, round trip or monthly pass for travel between cities in either direction. Additional pick up and drop times are needed to service employed clients or clients attending community colleges and vocational training.	FCRTA currently has the Westside transit that provides service between Firebaugh, Mendota, and Kerman as well as San Joaquin transit that provides in-city and inter-city service from San Joaquin to Tranquility, Cantua Creek, Halfway, El Porvenir and Three Rocks. The vocational training and colleges need to provide the supportive service for vocational training and employed clients outside of regularly scheduled fixed route hours (response letter sent).	N
18	Fresno	more frequent buses, and later service	FAX has recently increased frequencies on routes 9, 38 and the BRT (Q)	N
19	Fresno	More connectivity, later service with greater frequency to both city and Fresno State.	Both City College and Fresno State have bus service that operates to approximately 1:00 am.	N

20	Fresno	Need public transit to this area for the Clovis Community College	FAX and Clovis Community College are partnering to provide shuttle service between the CCC campus and River Park. At River Park, passengers can take one of 5 routes to continue their trip.	N
21	Sanger	Direct bus to and from Fresno, several times a day.	Currently there is an existing service for this area. FCRTA will be implementing an express route starting in Orange Cove and going into Fresno with a stop in Sanger, this will address this issue. A direct bus route is not feasible.	N
22	Unincorporated	Adding an Express or Rapid bus line that utilizes Freeway 99. The line would run from Herndon/99 to downtown with 4-6 stops near major roadways (e.g. Veterans, Shaw, Ashlan, Clinton, Olive). Examples exist in the Bay Area (SamTrans) and LA (Metro)	Fax has experimented on multi occasions with express service operating on the Highway 41 corridor. These projects have not generated the ridership required to sustain the project. In the future, as development continues west of Highway 99, this service may be studied.	N
23	Unincorporated	Bus service needs to expand westward and around the city. More bus service needs and expanding hours. You want the city to be a nice improve metro city with accessibilities for the people. It also reduce pollution, etc.	Service in the west of 99 area has been studied in the FAX Restructure Project. Recommendations have been made to extend service west to Hayes Ave. In addition, FAX has recently increased night service to approximately 1:00am on 5 of the most used routes.	N
24	Unincorporated	No bus service after polk and shaw. Need public transit west of Polk	Service in this area has been studied in the FAX Restructure Project. Recommendations have been made to extend service west to Hayes Ave.	N
25	Fresno, Rt. 9	New service between Shaw and Herndon, West of 99.	FAX, through the FAX Restructure Project, is currently reviewing options for making changes to the fixed-route network.	N
26	Fresno	Enhance safety on Ashlan and West.	FAX will review incidents at this location.	N
27	Unincorporated	Shaw Avenue west of Hwy 99 need major improvement and open up. It cause dangerous and road hazard	Road work is the responsibility of the Public Works Department within the City of Fresno.	N
28	Fresno	Route 32 has 5 buses. Need to add a sixth bus, especially on Tuesdays, Wednesdays, and Thursdays when many veterans use bus service to the VA.	Comment noted. FAX utilizes a scheduling program that determines the bus requirements based on frequencies, time and distance.	N
29	Fresno, Rt. 9	New stop in front of the Sikh Temple at 4827 N. Parkway Drive.	FAX is working with representatives of the Sikh community to establish a stop at the temple.	N
30	Clovis	Add cross-city bus from Clovis to Fresno and back down Nees.	Need more information about suggested destinations.	N
31	Clovis	Add more bus stops in the northeast area of Clovis	Clovis Transit is preparing for a comprehensive route study and redesign project. All bus stops, routes, and potential destinations will be evaluated.	N

32	Fresno/Clovis	Clovis Transit is very limited; we need more routes that allow us to go to Fresno not only within the City of Clovis. For example a bus that goes directly to Fresno Downtown. Right now it is easier for Visalia residents to go to Fresno than for Clovis residents.	Clovis Transit is preparing for a comprehensive route study and redesign project. All bus stops, routes, and potential destinations will be evaluated.	N
33	Fresno	Construct SE Transit Station to improve connectivity and provide resources for area residents,	Current plans have a transit center at the Fancher Creek Development at Tulare and Clovis.	N
34	Fresno	Have security patrolling downtown Fresno bus transit hub after dark.	FAX has increased the number of FAX police officers.	N
35	Fresno	Instead of having weekday buses run until 1AM, have the last one run at midnight and then add one more hour of service on popular routes on weekends so that last buses leave downtown after 8PM.	FAX is currently evaluating its night service through the FAX Restructure project.	N
36	Fresno	For the new Q BRT line, the route should run 5AM-midnight M-F and 7AM-9PM Sa/Su at a bare minimum.	The Q operates similar to the existing system, with weekday night service to approximately 1:00am.	N
37	Fresno	Look at the feasibility of providing lift/ uber script to get people, especially the elderly. This might be a more cost efficient, certainly a better level of transportation service for the elderly. Safer as well.	FAX is evaluating partnerships with transportation network companies like Lyft and Uber. In addition, the Fresno COG sponsors a senior taxi scrip program.	N
38	Fresno	Increasing frequency up and down McKinley and north and south on major roadways is a must. 10's of thousands of low income people live in this area. All are forced into cars to get to work.	FAX currently operates 15 minute service on Cedar, Blackstone and Shaw. All of these are disadvantaged neighborhoods.	N
39	Fresno	Pattern bus routes like San Francisco, i.e., the 38 Geary, the N Judah, the 7 Haight--the bus goes straight down the same major street east and west, and another route goes down major streets north and south. It's easier to figure out how to get where go	FAX follows the grid pattern of the street network. In some cases, to provide additional coverage, the routes may detour from the main streets.	N
40	Fresno	better service in west Fresno and west of highway 99	FAX is currently evaluating service improvements system-wide. West Fresno is one such area that is being analyzed for service improvements.	N
41	Fresno	bus stops are too few and far between, a study needs to be made. the housing areas have very few if any	FAX is evaluating stop spacing. Stops not on BRT are approximately .2 to .25 miles apart. This is less than 10 minutes walking time.	N
42	Fresno	Bus Stop Lighting	Where available, shelters are equipped with lighting. Not all stops have shelters.	N

43	Fresno	Bus service needs to be available wherever there are new businesses	Businesses open and close in all areas of the City. FAX responds to major employment centers where feasible.	N
44	Fresno	Some of the downtown stops could use some lighting or better security especially for evening services.	Where available, shelters are equipped with lighting. Not all stops have shelters.	N
45	Fresno	Better information on how to get around downtown with current transportation.	Way finding maps are displayed in kiosks located at the major stops in Courthouse Park (downtown). In addition, FAX recently introduced an app that can plan your trip or let you know where your bus is.	N
46	Fresno	Add some type of transportation for Fresno State students to other areas in Fresno without having to take a lot of buses.	Both City College and Fresno State have bus service that operates on weekdays to approximately 1:00 am.	N
47	Fresno	Vanpool parking	Vanpool parking is not a function of the public transit operators. Please refer to the Fresno Council of Governments Measure C Vanpool Commuter Program.	N
48	Fresno	Glad to hear that recent changes to increase ridership of the FAX buses. More of the Northwest buses should move to every 15 minutes during commute times in from 6am -10 am and 4pm to 6pm, Monday - Friday.	FAX currently operates 15 minute service on Cedar, Blackstone and Shaw.	N
49	Fresno	More lights, more patrols/law enforcement	Where available, shelters are equipped with lighting. Not all stops have shelters. In addition, FAX has increased the number of dedicated police officers.	N
50	Unincorporated	Have Clovis Transit buses run more often	Clovis Transit is preparing for a comprehensive route study and redesign project. All bus stops, routes, and potential destinations will be evaluated. Clovis Transit currently runs at 30 minute intervals.	N
51	Unincorporated	Implement carpool vans or other projects that allow us to use our cars less.	Van Pools/ Car Pools are not part of public transportation. Fresno COG is currently operating a vanpool service for commuters in Fresno County. Fresno COG is also participating in an intra-county vanpool for agricultural workers.	N
52	Unincorporated	Glad the future BRT is being extended to Kings Canyon (Walmart Area). I believe transit is served, but would like to see more transit shelters on Kings Canyon and Clovis areas.	The station spacing for BRT is approximately ½ mile. This allows for faster travel time which is a benefit of BRT.	N
53	Unincorporated	bus routes do not serve the industrial areas well	FAX continuously evaluates service levels and works with major employers on transit related issues.	N

54	Unincorporated	Improve web access to bus routes, not clear. Also how do you access bus passes online?	All of the transit operators in Fresno County have web sites outlining routes, frequencies and methods of paying fares.	N
55	Fresno	Hold future unmet needs meetings at local colleges such as Fresno City College and Fresno State.	Comment noted. We will incorporate your suggestion in next year's Unmet Needs Report.	N
56	Fresno	Provide taxi or Lyft service when transit is not available.	Taxi's, Lyft and Uber are currently operating in the City of Fresno and are available at various times throughout the day and night.	N
57	Clovis	In Clovis, more buses need to be in operation for more of the day. Some buses have their last trip at 3PM.	Clovis Transit is preparing for a comprehensive route study and redesign project. All bus stops, routes, and potential destinations will be evaluated.	N
58	Fresno	Taxi service needs much improvement. There is no consistency across service providers.	Taxi service is not within the jurisdiction of public transit operators. Fresno COG runs the Taxi Scrip program. However, they don't oversee or regulate taxi service.	N
59	Fresno	Continues to support services at Ted C. Willis	Ted C Willis is currently served directly by route 22. In addition, it is approximately ¼ mile from BRT service.	N
60	Fresno	Work on improving the driver's customer service skills.	FAX has a comprehensive training program that includes curriculum to improve the driver's customer service skills. Such training is done on an ongoing basis.	N
61	Fresno	Bus drivers often pull away from a stop as people are running to meet the bus.	FAX has a comprehensive training program that includes curriculum to improve the driver's customer service skills. Such training is done on an ongoing basis.	N
62	Fresno	Drivers need to be more helpful with senior riders.	FAX has a comprehensive training program that includes curriculum to improve the driver's customer service skills. Such training is done on an ongoing basis.	N
63	Fresno	Suggestion: Provide those seniors who need assistance with cards that they can show a driver as the bus arrives to a stop. Such a service will result in more goodwill with the community and perhaps improved efficiency as well.	Comment noted. FAX has a comprehensive training program that includes curriculum to improve the driver's customer service skills. Such training is done on an ongoing basis.	N
64	Fresno	Transit could benefit from better planning for future economic opportunities.	Comment noted. FAX has a planning division that works with the City to evaluate future development plans and how transit fits into them.	N
65	Fresno	Overall drivers are very good. There is Socorro who saved the girl and another driver who reported a child talking about shooting up his school.	Thank you for your kind comment.	N

66	Fresno	Drivers can benefit from being more compassionate.	Comment noted. FAX has a comprehensive training program that includes curriculum to improve the driver's customer service skills. Such training is done on an ongoing basis.	N
67	Fresno	Need system to recognize those drivers who provide excellent service.	FAX has a program in place to recognize those employees who go out of their way to provide excellent service.	N
68	Fresno, Rt. 9	Unsafe Stop: SW Polk and Shaw (no sidewalks)	This is within the domain for Fresno Department of Public Works.	N
69	Fresno	Increased frequencies	FAX is running 10 minute frequencies during peak hours on BRT. Most of the remaining network is running 15 to 30 minute headways throughout the day. FAX is looking to further improve headway frequencies.	N
70	Fresno	Need to restore week night service to 30 minutes.	Through the FAX Restructure Project, FAX is evaluating night service. Currently service is provided up to 1:00 am on the 5 most travelled routes with timed connections at intersecting points.	N
71	Fresno	Routes 20 and 32 frequently run late.	Comment noted. Fresno Area Express is continuously working to improve on-time service levels.	N
72	Fresno	Route 22 often runs very late	Comment noted. Fresno Area Express is continuously working to improve on-time service levels.	N
73	Fresno	Route 26 frequently runs late.	Comment noted. Fresno Area Express is continuously working to improve on-time service levels.	N
74	Reedley and Coalinga	Limited pick up/drop off times (they usually only have 1 pick/drop off time per day) and Limited pick up/drop off locations.	FCRTA currently has an intra-city and inter-city route in Coalinga and an intra-city service in Reedley. FCRTA will be implementing 2 new express routes, one starting in Orange Cove with a stop in Reedley and the other starting in Coalinga, both going into Fresno (response letter sent).	N
75	Fresno and Clovis	Increase service across Route 45 to accommodate the move of Fresno County Social Services to the former Pelco campus. (Details were sent in via email.)	Fresno Area Express has recently completed a route restructuring study looking at service in this area. We understand that the move into the former Pelco campus is a long-term process to be completed in late 2019. Fresno Area Express is happy to review future service needs to the campus.	N
76	Coalinga	Is the local transit bus permanently out of service for those who need transportation within the city?	FCRTA currently has an intra-city service in Coalinga that has suffered from driver shortage due to the current subcontractor. FCRTA has released an RFP and may result in a new provider that will address this driver shortage issue affecting needed services in rural communities.	N

77	Fresno	Transit rider has been impacted as a result of increasing the distance between bus stops along BRT Route 1 from .25 miles to .50 miles.	<p>FAX completed a significant public outreach campaign covering the changes to the existing system as a result of BRT. An extensive environmental analysis was also undertaken. In the end, the City Council approved the project for the larger population.</p> <p>FAX operates Handy Ride, the paratransit service for the City of Fresno. The transit rider was made aware of this she was encouraged to look into whether or not she qualifies for service.</p>	N
----	--------	---	--	---

Attachment A

Social Services Transportation Advisory Council Membership List Updated April 2018

Potential Transit User 60 Years of Age or Older (minimum of 1)			
Appointment	Resident of/Geographic Representation	Term Expires	Ethnic Background
Michael Mendez, Jr.	Sanger/Fresno County	1-2021	Hispanic

Representatives of the Local Social Service Providers for Seniors (minimum of 2)			
Appointment	Resident of/Geographic Representation	Term Expires	Ethnic Background
Sonia Del La Rosa, Fresno County	Fresno/Fresno County	6-2021	Hispanic
Harpreet Kooner, Fresno County Public Works	Fresno/Fresno County	5-2019	Asian-Indian

Potential Transit User Who Is Disabled (minimum of 1)			
Appointment	Resident of/Geographic Representation	Term Expires	Ethnic Background
Carlos Duarte, FAX	Fresno/Fresno County	3-2018	Hispanic

Representative of the Local Social Service Provider for Disabled (minimum of 2)			
Appointment	Resident of/Geographic Representation	Term Expires	Ethnic Background
Vidal Medina, Resources for Independence, Central Valley	Fresno/Fresno County	5-2020	Hispanic
Bill Hyatt, CVRC	Fresno/Fresno County	6-2018	Caucasian

Representative of a Local Social Service Provider for Persons of Limited Means (minimum of 1)			
Appointment	Resident of/Geographic Representation	Term Expires	Ethnic Background
Michael Mendez, Jr.	Sanger/Fresno County	1-2021	Hispanic
Hector Medina, Fresno County	Fresno/Fresno County	6-2021	Hispanic

Representatives from the Local Consolidated Transportation Service Agency (minimum of 2)			
Appointment	Resident of/Geographic Representation	Term Expires	Ethnic Background
Amy Hance, Clovis Transit	Clovis/Fresno County	6-2020	Caucasian
Monty Cox, FEOC/CTSA	Fresno/Fresno County	6-2020	Caucasian
Moses Stites, FCRTA	Fresno/Fresno County	3-2018	Hispanic
Judith Nishi, FAX	Sanger/Fresno County	6-2018	Asian American

Representatives of General Public, who used Public Transit			
Appointment	Resident of/Geographic Representation	Term Expires	Ethnic Background
Yonas Paulos	Fresno/Fresno County	6-2020	Caucasian

Acronym	Agency Name
FMAAA	Fresno Madera Area Agency on Aging
RICV	Resources for Independence, Central Valley
UCP	United Cerebral Palsy
ET&A	Fresno County Department of Employment & Temporary Assistance
FEOC	Fresno Economic Opportunities Commission
CTSA	Consolidated Transportation Service Agency
FCRTA	Fresno County Rural Transit Agency
FAX	Fresno Area Express
VAC CA HCS	Veterans Administration Central California Health Care System
FCHSS	Fresno County Health and Social Services
NFB	National Federation of the Blind
CCNF	Central California Nikkie Foundation

Attachment B
2018 Unmet Transit Needs Process Outreach – Fresno COG

What	Whom	Number	Date
English/Spanish flyer mail out	Unmet Needs Mailing List	380	3/8/2018
Included in Coming Up at Fresno COG e-newsletter	COG database - Includes all Constant Contact email contacts, elected officials, committees, community agencies, consultants	1317	3/8/2017
Fresno Metro Ministries email	FMM Contacts - community agencies	2000	3/7/2018
Public Hearing Notice - English	Fresno Bee	590,000	3/26/2018
Public Hearing Notice - Spanish	Vida En El Valle	170,000	3/28/2018
Fresno COG website	Posted to COG website under Get Involved and Public Transit Planning. Calendar items as well.		
Included in Coming Up at Fresno COG e-newsletter	COG database - Includes all Constant Contact email contacts, elected officials, committees, community agencies, consultants	1376	4/23/2018
Vintage Days booth	Handed out Unmet Needs flyers		4/20-21/18
Posted Coming Up at Fresno COG on COG Facebook page announcing public hearing - English			4/24/2018
Created a Facebook event regarding public hearing			4/24/2018
Fresno Area Express Buses	Flyers were posted within each bus within the Fresno Area Express fixed route network	100	4/10/2018
Fresno Area Express (FAX) newsletter	Fresno Area Express newsletter	302	4/10/2018

**Attachment B-1
Unmet Transit Needs Request Flyer and Comments Form**



In partnership with the following public transit agencies:

- Clovis Transit
- Fresno Area Express
- Fresno County Rural Transit Agency
- Fresno Economic Opportunities Commission

***Do you or someone you know have a public transit need
that is not being met?***

2018 UNMET TRANSIT NEEDS—PUBLIC COMMENTS PROCESS

**The Fresno Council of Government's (FCOG)
Social Services Transportation Advisory Council would like to hear from you!**

If you would like to provide comments on public transit needs in Fresno County,
please attend one of the eight public meetings closest to your residence, or submit written
comments as requested on the back of this notice.

MEETING DATES AND LOCATIONS:

Tuesday, March 13, 5:30pm
West Side of Fresno County
Mendota City Hall
643 Quince Street Mendota, CA 93640

Tuesday, March 20, 5:30pm
Clovis Metropolitan Area
Clovis Senior Center
850 Fourth Street, Clovis, CA 93612

Wednesday, March 28, 5:30pm
Fresno Metropolitan Area
Central Valley Regional Center
4615 N Marty, Fresno, CA 93722

Thursday, April 5, 5:30 pm
Fresno Metropolitan Area
Mosqueda Center (Room 8)
4670 E. Butler Ave., Fresno, CA 93702

Monday, March 19, 5:30pm
Eastside of Fresno County
Selma City Hall
1710 Tucker Street, Selma, CA 93662

Wednesday, March 21, 5:30 pm
West Side of Fresno County
Kerman City Hall
850 S. Madera Avenue, Kerman, CA 93630

Wednesday, April 4, 5:30 pm
Fresno Metropolitan Area
Ted C. Wills Senior Center
770 N. San Pablo, Fresno, CA 93728

Thursday, April 19, 6:00pm
Eastside of Fresno County
Parlier City Hall
1100 E. Parlier Ave., Parlier, CA 93648

If you are unable to attend a meeting but would like to provide your comments, please see the section titled "How To Participate" on the back of this flyer.

All meeting rooms and restrooms are ADA accessible. Representatives or individuals with disabilities should contact Fresno COG at 559-233-4148, at least 3 days in advance of a meeting to request auxiliary aids and/or translation services necessary to participate in the public meeting.

BACKGROUND INFORMATION

What is the purpose of the unmet transit needs meetings?

The meetings provide opportunity for the public to identify all Fresno County “unmet transit needs” that are “reasonable to meet” within Fresno County (PUC 99401.5 (d)).

What is an “unmet transit need”?

An “unmet transit need” is an inadequacy in existing public transit service for persons recognized as transit dependent in Fresno County.

Who is “transit dependent”?

The “transit dependent” are those individuals who rely on public transit because they do not operate a vehicle because of youth, advanced age, mental or physical impairment or low income.

What is the purpose of the Social Services Transportation Advisory Council (SSTAC)?

The purpose of SSTAC is to receive public comment regarding transit service needs for the transit-dependent in Fresno County.

HOW TO PARTICIPATE

1. Attend a public outreach meeting and/or public hearing and speak with transit agency representatives.
2. Submit a comment card at the meeting, providing as much detail as possible to describe the need you would like to have met.
3. If you are unable to attend a meeting, but would like to provide your comments, please mail or email your comments to:

Bill Hyatt, SSTAC Chairman
Central Valley Regional Center, Inc.
4615 North Marty, Fresno, CA 93722
Email: comments@fresnocog.org

4. To receive more information about available transit and the unmet Transit Needs process, visit us on the web at this link:

<https://www.fresnocog.org/project/public-transit-planning/>

**2018 Unmet Transit Needs
Comment Form**

Name*:

Email:

City*: Ph. Number:

Zip*:

During the past week (7 days), on how many days have you ridden the bus?

1 2 3 4 5 6 7

1. Which transit system(s) are you requesting improvements to?*

Fresno Area Express

FAX Handy Ride

Clovis Stageline

Fresno County Rural Transit

Clovis Round-Up

Fresno Economic
Opportunities Commission

Other:

2. Describe the transit improvement(s) you are requesting. To effectively evaluate your comment, please provide the nearest cross street (or area of town where you live), your destination, day of week, and approximate time of day that you are interested in making your trip.*

3. Describe the individuals who would need the service. Include age group, financial constraints, and whether they have disabilities that would require special services. *

Your comments will be compiled in a report on Unmet Transit Needs. If you provide your contact information, you will receive a notice once the report is available for review. Please return form to:

Bill Hyatt, SSTAC Chairman
Central Valley Regional Center, Inc.
4615 North Marty
Fresno, CA 93722 Fax no: (559) 276-4360
comment@fresnocog.org



En asociación con las siguientes agencias de transporte público:

Clovis Transit
Fresno Area Express
Fresno County Rural Transit Agency
Fresno Economic Opportunities Commission

¿Usted o alguien que conoce tiene una necesidad de transporte público que no se está cumpliendo?

***2018 NECESIDADES DE TRÁNSITO NO CUMPLIDAS -
-PROCESO DE COMENTARIOS PÚBLICOS***

¡El Consejo Consultivo de Transporte de Servicios Sociales del Consejo de Gobiernos de Fresno (FCOG) desea escucharlo a usted!

Si desea proporcionar comentarios sobre las necesidades de transporte público en el condado de Fresno, por favor asista a una de las ocho reuniones públicas más cercanas a su residencia, o presente por escrito

FECHAS Y LUGARES DE LAS REUNIONES:

Martes, 13 de Marzo, 5:30pm
lado oeste del Condado de Fresno
Mendota City Hall
643 Quince Street Mendota, CA 93640

Lunes, 19 de Marzo, 5:30pm
lado este del Condado de Fresno
Selma City Hall
1710 Tucker Street, Selma, CA 93662

Martes, 20 de Marzo, 5:30pm
área metropolitana de Clovis
Clovis Senior Center
850 Fourth Street, Clovis, CA 93612

Miércoles, 21 de Marzo, 5:30 pm
lado oeste del Condado de Fresno
Kerman City Hall
850 S. Madera Avenue, Kerman, CA 93630

Miércoles, 28 de Marzo, 5:30pm
área metropolitana de Fresno
Central Valley Regional Center
4615 N Marty, Fresno, CA 93722

Miércoles, 4 de Abril, 10:00am
área metropolitana de Fresno
Ted C. Wills Senior Center
770 N San Pablo, Fresno, CA 93728

Jueves, 5 de Abril, 5:30pm
área metropolitana de Fresno
Mosqueda Center (Room 8)
4670 E. Butler Ave., Fresno, CA 93702

Jueves, 19 de Abril, 6:00pm
lado este del Condado de Fresno
Parlier City Hall
1100 E. Parlier Ave, Parlier, CA 93648

Si no puede asistir a una reunión pero desea enviarnos sus comentarios, consulte la sección titulada "Cómo Participar" en la parte posterior de este folleto.

Todas las salas de reuniones y los baños tienen acceso ADA. Los representantes o individuos con discapacidades deben comunicarse con Fresno COG al 559-233-4148, al menos 3 días antes de una re-

INFORMACIÓN DE ANTECEDENTES

¿Cuál es el propósito de las reuniones de necesidades de tránsito no cumplidas?

Las juntas brindan oportunidad para que el público identifique todas las "necesidades de tránsito no cumplidas" del Condado de Fresno que sean "razonables" en el Condado de Fresno (PUC 99401.5 (d)).

¿Qué es una "necesidad de tránsito no cumplida"?

Una "necesidad de tránsito no cumplida" es una insuficiencia en el servicio de transporte público existente para personas reconocidas como dependientes del tránsito en el condado de Fresno.

¿Quiénes son los "dependientes del tránsito"?

Los "dependientes del tránsito" son aquellas personas que dependen del transporte público porque no operan un vehículo debido a su juventud, edad avanzada, impedimento mental o físico o bajos ingresos.

¿Cuál es el propósito del Consejo Consultivo de Transporte de Servicios Sociales (SSTAC)?

El propósito de SSTAC es recibir comentarios públicos sobre las necesidades del servicio de tránsito para el dependiente del tránsito en el condado de Fresno.

COMO PARTICIPAR

1. Asista a una reunión de alcance público y / o audiencia pública y hable con los representantes de la agencia de tránsito.
2. Presente una tarjeta de comentarios en la reunión, proporcionando tantos detalles como sea posible para describir la necesidad que le gustaría que se cumpla.
3. Si no puede asistir a una reunión, pero desea enviarnos sus comentarios, envíe sus comentarios por correo o por correo electrónico a:

Bill Hyatt, SSTAC Chairman
Central Valley Regional Center, Inc.
615 North Marty, Fresno, CA 93722
Email: comments@fresnocog.org

4. Para recibir más información sobre el tránsito disponible y el proceso de necesidades de tránsito no cumplidas, visítenos en el internet en este enlace:

<https://www.fresnocog.org/project/public-transit-planning/>

**2018 Necesidades de Tránsito No Cumplidas
Formulario de Comentario**

Nombre*:

Email:

Ciudad*: Número de Tel:

Zip*:

Durante la semana pasada (7 días), ¿cuántos días ha subido al autobús?

1 2 3 4 5 6 7

1. ¿A qué sistema (s) de tránsito solicita que se hagan mejoras? *

- | | |
|---|---|
| <input type="checkbox"/> Fresno Area Express | <input type="checkbox"/> FAX Handy Ride |
| <input type="checkbox"/> Clovis Stageline | <input type="checkbox"/> Fresno County Rural Transit |
| <input type="checkbox"/> Clovis Round-Up | <input type="checkbox"/> Fresno Economic Opportunities Commission |
| <input type="checkbox"/> Otro: <input type="text"/> | |

2. Describa las mejoras de tránsito que está solicitando. Para evaluar su comentario de manera efectiva, proporcione el cruce de calles más cercano (o el área de la ciudad donde vive), su destino, el día de la semana y la hora aproximada del día en la que está interesado en hacer su viaje. *

3. Describa las personas que necesitarían el servicio. Incluya grupos de edad, restricciones financieras y si tienen discapacidades que requieran servicios especiales.*

Sus comentarios se compilarán en un informe sobre necesidades de tránsito no atendidas. Si proporciona su información de contacto, recibirá un aviso una vez que el informe esté disponible para su revisión. Por favor devuelva el formulario a:

Bill Hyatt, SSTAC Chairman
Central Valley Regional Center, Inc.
4615 North Marty
Fresno, CA 93722 Fax no: (559) 276-4360
comment@fresnocog.org

**Attachment B-3
Unmet Needs Letter Mailing List**

First	Last	AGENCY	TITLE	ADD1	CITY	ST	ZIP
		Fresno Police Dept.	D.A.R.E. Officer	2324 Mariposa St.	Fresno	CA	93721
		Caltrans, District 06	District Director	P.O. Box 12616	Fresno	CA	93778
		Smith Barney	Investment Advisor	5250 N. Palm, #301	Fresno	CA	93704
		Summit Care Corporation	Social Service Coordinator	5630 N. Van Ness	Fresno	CA	93711
		Sunrise Assisted Living	Executive Director	7444 N. Cedar	Fresno	CA	93720
		The Gendron Home	Social Service Coordinator	6786 N. Hayston	Fresno	CA	93710
		Refugee Health Screening	Medical Interpreter Escort	P.O. Box 11867	Fresno	CA	93775
		USDA - Natural Conservation	Resource Conservation Technician	1907 N. Gateway Blvd., Suite 101	Fresno	CA	93727
		Balderas Elementary School	Bilingual Counseling	4625 E. Florence Ave.	Fresno	CA	93725
		Valley Memorial Society	Social Service Coordinator	622 W. Rialto Ave.	Fresno	CA	93705
		CSUF Foundation	Executive Director	5310 N. Campus Dr., MS102	Fresno	CA	93740
		Older Adult Care Solutions	Social Service Coordinator	204 W. Portland	Fresno	CA	93711
		Commission on the Status of Women	Commissioner	3283 N. Dewey	Fresno	CA	93722
		Shaw Ranch	Administrator	8016 E. Shaw	Clovis	CA	93611
		School of Health & Social Work Ed.	Assistant Professor	3225 E. San Ramon Ave.	Fresno	CA	93740
		Senior Advocate	Social Service Coordinator	1567 E. Almendra	Fresno	CA	93710
		Fresno Co. Mental Health Dept.	Social Service Coordinator	4441 E. Kings Canyon Rd.	Fresno	CA	93702
		Pioneer Systems	Reg. Service Admin.	P.O. Box 2963	Oakhurst	CA	93644
		Crime Prevention Unit	Community Service Officer	2323 Mariposa St.	Fresno	CA	93721
		Medical Claims Filing Service	Social Service Coordinator	4733 N. Crystal	Fresno	CA	93705
			Office of District Attorney	2220 Tulare St., #1700	Fresno	CA	93779

		Fresno Co. Office of Education		1111 Van Ness Ave., Towers-- Ste.4	Fresno	CA	93721-2000
		NOIA Community Ctr.		606 E. Belmont Ave.	Fresno	CA	93701
		San Joaquin Valley Dialysis		3636 N. First St., #144	Fresno	CA	93726
		Fresno Area Express	Maintenance Mgr.	2223 G St.	Fresno	CA	93706
		Sierra Mono Museum	Executive Director	P.O. Box 929	North Fork	CA	93643
		Fresno Co. Comm. Health	Supervisor	1222 Fulton Mall, MS 178	Fresno	CA	93721
		Children Services Network	Resources Referral Assistant	1911 N. Helm Ave.	Fresno	CA	93727-1614
		Somerford Place	Marketing Director	6075 N. Marks Ave.	Fresno	CA	93711
		Orange Cove Family Health Ctr.		445 Eleventh St.	Orange Cove	CA	93646-2298
		Boys & Girls Clubs of Fresno	Administrative Office	540 N. Augusta	Fresno	CA	93701
		Central Valley Aids Team			Fresno	CA	
		Central Valley Regional Center	Resource Developer	4615 N. Marty Ave.	Fresno	CA	93722-7818
		Central Valley YMCA	Director	7797 N. 1st St., Ste. 101	Fresno	CA	93720
		California Highway Patrol	Area Commander	1382 W. Olive	Fresno	CA	93775
		EOC Refugee Svs.	Project Coordinator	1920 Mariposa Mall	Fresno	CA	93721
		Fresno Area Express	Senior Transit Planner	2223 G St.	Fresno	CA	93706
		Fresno Co. Library, Bear Mtn. Branch		30733 Kings Canyon Rd.	Squaw Valley	CA	93675
		Fresno Co. Hispanic Commission on Alcohol & Drug Abuse Svs. Inc.		1803 Broadway St	Fresno	CA	93721-1047
		Fresno Main Office	Postmaster	1900 E St.	Fresno	CA	93706
		Fresno Pacific University	Director of Student Affairs	1717 S. Chestnut	Fresno	CA	93702
		Hmong American Advisory	President	2333 N. Price Ave.	Fresno	CA	93703
		Sheriff's Dept.	Community Service Officer	2200 Fresno St.	Fresno	CA	93717
		Lao Buddhist Temple		4733 W. Vassar Ave.	Fresno	CA	93722

		Clovis Police Dept.	Community Service Officer	1033 Fifth St.	Clovis	CA	93612
		Salvation Army Congregate Meals		1854 Fulton St.	Fresno	CA	93721
		Selma Community Health Center		1041 E. Rose Ave.	Selma	CA	93662-3292
		Total Life at St. Agnes		1303 E. Herndon Ave.	Fresno	CA	93720-3309
		United Health Centers	Chief Ex. Officer	650 Zediker Ave., P.O.Box 190	Parlier	CA	93648
			President				
		World Relief Refugee Svcs.	Coordinator	2301 Lamona	Fresno	CA	93703
		CA Armenian Home	Director of Social Services	6720 E. Kings Canyon Rd.	Fresno	CA	93727
		Carrington Pointe	Marketing Director	1715 E. Alluvial	Fresno	CA	93720
		EOC Senior Aides	Director	1900 Mariposa, #116	Fresno	CA	93721
		Foster Grandparent Program	Program Director	1920 Mariposa Mall	Fresno	CA	93721
		Fresno Unified School District	Multicultural/Multilingual Dept.	Tulare & M St.	Fresno	CA	93721
		Robinwood Inn	Administrator	567 W. Sample	Fresno	CA	93704
		Hy-Pana Convalescent Hospital		3510 E. Shields	Fresno	CA	93726
		City Manager's Office	Assistant Ombudsman	2600 Fresno St.	Fresno	CA	93721
		A Recovery Ctr. For Chemical Dependency	Director	11838 South Marshall Ave.	Reedley	CA	93654
		Sr. Nutrition, Ted C. Wills Ctr.	Coordinator	770 N. San Pablo	Fresno	CA	93728
		FEOC		1920 Mariposa Mall	Fresno	CA	93721
		Wesley Ctr.		1343 E. Barstow	Fresno	CA	93710
James	VanDeVeld e	Community Regional Medical Centers	Director of Business Development	2823 Fresno Street	Fresno	CA	93721
Esam	Abed	County of Fresno DSS, Selma Region Office	Program Manager	3800 McCall Ave.	Selma	CA	93662
Vivian	Aldridge	County of Fresno DSS, Welfare to work & Child Care	Program Manager	455 E. Kings Canyon, Bldg. 313	Fresno	CA	93702

Michael	Alexander	United Way of Fresno County	President	4949 E. Kings Canyon Road	Fresno	CA	93727
Mohammad	Alimi	County of Fresno, Public Wks.	Division Manager	2220 Tulare St., 6th Floor	Fresno	Ca	93721
Lori	Alvarez	TAT Management Company, Inc.	Executive Director	530 W. Floradora Ave.	Fresno	CA	93728
Joseph	Amador	City of Mendota	Councilmember	643 Quince St.	Mendota	CA	93640
Brian	Angus	Fresno Economic Opportunities Commission	Executive Director	1920 Mariposa Mall, Ste.. 300	Fresno	CA	93721
LaDonna	Armack	Sr. Citizens Village	Nutrition Site Coord.	1917 S. Chestnut	Fresno	CA	93702
Rhonda	Armstrong	City of Kerman	Mayor	575 S. Boyd Drive	Kerman	CA	93630
Charles	Arokiasamy	Rehabilitation Counseling Program, CSUF	RhD.	5005 N. Maple, MS3	Fresno	CA	93740
Emma	Artin			3417 N. Fresno St.	Fresno	CA	93726
Lynne	Ashbeck	City of Clovis	Councilmember	2930 Holly	Clovis	CA	93611
Jim	Avalos	City of Selma	Mayor Pro Tem	1701 Dinuba Ave., Space 214	Selma	CA	93662
Tom	Bailey	Fresno Area Residents for Rail Consolidation		1941 W. Santa Ana	Fresno	CA	93705
Oliver	Baines	City of Fresno	Councilmember	2600 Fresno St.	Fresno	CA	93721
Sue	Bauch	City of Kingsburg		1401 Draper St.	Kingsburg	CA	93631
Robert	Beck	City of Reedley	Councilmember	1717 Ninth St.	Reedley	CA	93654
Olga	Beltran	County of Fresno DSS, Kerman Region Office	Social Services Program Supervisor	15180 West Whitesbridge Road	Kerman	CA	93630
Alma	Beltran	City of Parlier	Mayor	1100 E. Parlier Ave.	Parlier	CA	93648
Jose	Benavides	TJKM Transportation Consultants		516 W. Shaw	Fresno	CA	93704
Ben	Benavides	Mexican Am. Political Assoc.		P.O. Box 1744	Fresno	CA	93720
Denise	Benelli	Sierra Oaks Senior and Community Center	Site Coordinator	33276 Lodge Road	Tollhouse	CA	93667
Tom	Berryhill	14th District	Senator	6215 N. Fresno St., Ste. 104	Fresno	CA	93710
Anita	Betancourt	City of Reedley	Mayor	1717 Ninth St.	Reedley	CA	93654
James	Bethel	Mono Nation	Chairman	P.O. Box	North	CA	93643

				1377	Fork		
Breat	Bethell			1856 W. Santa Ana Ave., #102	Fresno	CA	93705
Carol	Bill	Cold Springs Rancheria	Chairperson	P.O. Box 209	Tollhouse	CA	93667-0209
Bruce	Blayney	City of Kingsburg	Mayor Pro Tem	1401 Draper St.	Kingsburg	CA	93631
Andreas	Borgeas	County of Fresno	Supervisor	2281 Tulare St., Hall of Records, #300	Fresno	CA	93721
Kelley	Bourdeau	City of Coalinga		155 W. Durian	Coalinga	CA	93210
Joe	Bowling	Sequoia Area VIII Board		770 E. Shaw, #123	Fresno	CA	93710
Lee	Brand	City of Fresno	Mayor	2600 Fresno St.	Fresno	CA	93721
Steve	Brandau	City of Fresno	Councilmember	2600 Fresno St.	Fresno	CA	93721
Sandra	Brock			33000 George Smith Rd.	Squaw Valley	CA	93675
Diana	Brooks	City of San Joaquin	City Clerk	P.O. Box 758	San Joaquin	CA	93660
Brenda	Brown	Mosqueda Center - Senior Program	Nutrition Site Coordinator	4670 E. Butler	Fresno	CA	93702
Nathaniel	Brown	Boys and Men of Color	Program Assistant	4949 East Kings Canyon Road	Fresno	CA	93727
Raul	Cantu, Jr.	City of Sanger		1700 Seventh St.	Sanger	CA	93657
Paul	Caprioglio	City of Fresno	Councilmember	2600 Fresno St.	Fresno	CA	93721
David	Cardenas	City of Fowler	Mayor	105 Carter	Fowler	CA	93625
Dennis	Cardoza	18th District	Congressman	2222 M St., #305	Merced	CA	95340-3729
Janet	Carmichael	CA Dept. of Rehabilitation		2550 Mariposa St., #200	Fresno	CA	93721
Sharon	Carter	Big Sandy Rancheria	Tribal Administrator	P.O. Box 337	Auberry	CA	93602
Carol	Casey			4952 E. Heaton Ave., Apt. B	Fresno	CA	93727
Joseph	Castro	CSUF, Fresno	President	5241 N. Maple	Fresno	CA	93740-0048
Rolando	Castro	City of Mendota	Mayor	643 Quince St.	Mendota	CA	93640
Sandra	Celedron-Castro	Building Healthy Communities	HUB Manager	4949 East Kings Canyon Road	Fresno	CA	93727
Elias	Cendejas			563 Elwood Road	Squaw Valley	CA	93675

Josie	Cervantes	City of Orange Cove	Councilmember	633 Sixth St.	Orange Cove	CA	93646
Tim	Chapa	City of Sanger	City Manager	1700 Seventh St.	Sanger	CA	93657
Dick	Charley	Sierra National Forest		1600 Tollhouse Rd.	Clovis	CA	93611
Ben	Charlie, Sr.	Dunlap Band of Mono Indians	Chairman	P.O. Box 44	Dunlap	CA	93621
Luis	Chavez	City of Fresno	Councilmember	2600 Fresno St.	Fresno	CA	93721
Caine	Christensen	Community Regional Medical Centers	Project Manager-Community Connections	2823 Fresno Street	Fresno	CA	93721
Joanne	Cisros	Western Service Ctr.	Federal Motor Carrier Safety Admin.	12600 W. Colfax Ave., Ste. B300	Lakewood	CO	80215-3753
Jennifer	Clark	City of Fresno	Director Of Development	2600 Fresno St. Room 3065	Fresno	CA	93721
Jeffrey	Clason	Central California Legal Services, Inc.	Deputy Director-Legal	2115 Kern Street	Fresno	CA	93721
Bruce	Coleman	Central Valley Mayors' Committee		24511 W. Jayne Ave.	Coalinga	CA	93210
Travis	Coleman	Cold Springs Rancheria		P.O. Box 209	Tollhouse	CA	93667-0209
Karin	Collins	Fresno City College	CVMC	1101 E. University Ave.	Fresno	CA	93741
Leticia	Corona	Leadership Counsel	Community Advocacy Director	764 P Street, Suite 012	Fresno	CA	93721
Jim	Costa	20th District	Congressman	855 M St., Ste. 940	Fresno	CA	93721
Demetria	Costa	Fresno-Madera Area Agency on Aging	Clinical Manager	3837 N. Clark St.	Fresno	CA	93726
Monty	Cox	Fresno EOC	CTSA Transit System Dir.	3100 W. Nielson	Fresno	CA	93730
Kevin	Creighton	Childrens Hospital of Ctrl. CA	Dir. Of Planning	9300 Valley Childrens Pl.	Madera	CA	93637
Ben	Creighton	City of Kingsburg	Councilmember	1401 Draper St.	Kingsburg	CA	93631
Steve	Curti	Caltrans, District 6	Senior Transp. Planner	P. O. Box 12616	Fresno	CA	93778
Linda	Danna	KGPE-TV Channel 47	VP/General Manager	4880 N. First St.	Fresno	CA	93726-0562
Zach	Darrah	Fresno Interdenominational Refugee Ministries (FIRM)	Executive Director	1940 North Fresno Street	Fresno	CA	93703
Martin	Davis	Haslett Basin Traditional Committee	Chairman	2495 W. Alamos #123	Fresno	CA	93705

Jeff	Denham	19th District	Congressman	4701 Sisk Rd., Ste. 202	Modesto	CA	95356
Michael	Derr	City of Selma	Mayor	2063 Front St.	Selma	CA	93662
Linda	Descoteaux	Fresno-Madera Area Agency on Aging	Administrative Manager	3837 N. Clark St.	Fresno	CA	93726
Barbara	Devinney	Exceptional Parents Unlimited	Development Director	4440 N. First St.	Fresno	CA	93726
Amarpreet	Dhaliwal	City of San Joaquin	Mayor Pro Tem	P.O. Box 758	San Joaquin	CA	93660
Octavia	Diener			2054 W. Alluvial	Fresno	CA	93711
Vince	DiMaggio	City of Mendota	City Manager	643 Quince St.	Mendota	CA	93640
Marie	Dominguez	Wuksachi Trib - Sierra Foothills	Chairman				
Alfonzo	Dominguez	County of Fresno DSS, Coalinga Region Office	Social Services Program Supervisor	311 Coalinga Plaza	Coalinga	CA	93210
Rufino	Dominguez	Centro Binacional Para El Desarrollo Indigena Oaxaqueno	V. Coordinator General	P.O. Box 106	Fresno	CA	93707-0106
Kathleen	Donawa	County of Fresno	Assistant CAO	2281 Tulare St., Hall of Records 304	Fresno	CA	93721
Brenda	Doody			5438 N. Salinas	Fresno	CA	93722
Angie	Dow	Kings Co. Area Public Transit Agency	Transit Manager	1400 W. Lacey Blvd.	Hanford	CA	93230
Janet	Drane			P.O. Box 672	Clovis	CA	93613
Rosie	Draper			2740 W. Olive, #81	Fresno	CA	93728
Carlos	Duarte	Fresno Area Express	ADA Coordinator	2223 G St.	Fresno	CA	93706
Jerry	Dyer	Fresno Police Department	Chief of Police	2323 Maiposa St.	Fresno	CA	93721
Pam	Eaton	Central Valley YMCA		7797 N. 1st St., Ste. 101	Fresno	CA	93720
Sharri	Ehlert	Caltrans, District 06	District Director	P.O. Box 12616	Fresno	CA	93778
Wendy	Eisenberg	Talking Book Library for the Blind	Librarian - Supervisor	770 N. San Pablo	Fresno	CA	93728
David	Elias	City of Selma	City Manager	1710 Tucker Street	Selma	CA	93662
Janice	Emerzian	Fresno City College		1101 E. University	Fresno	CA	93704
Randy	Equsquiza	Union Pacific RR	Sr. Mgr. Terminal Operations	3135 N. Webber Ave.	Fresno	CA	93705

Linda	Espinoza	County of Fresno DSS, Adult Protective Services	Deputy Director, AYAA	2025 East Dakota Ave.	Fresno	CA	93726
Rachel	Facio			4214 N. Cornelia	Fresno	CA	93722
Mary	Fast	City of Reedley	Councilmember	1733 9th St.	Reedley	CA	93654
Bertha	Felix-Mata	West Hills Community College District	Director of Title IV Programs	300 Cherry Lane	Coalinga	CA	93710
Dave	Fey	Fresno Local Agency Formation Comm.	Executive Officer	2607 Fresno Street, Suite B	Fresno	CA	93721
Sandy	Files	Total Health Care Cetner	Program Director	1200 Smith St.	Kingsburg	CA	93631
George	Findley	Cecil C. Hinton Community Center, Inc.	President	2385 S. Fairview Ave.	Fresno	CA	93706
Larry	Fleck			144 Alamos Ave., #101	Clovis	CA	93612
Jose	Flores	City of Clovis	Councilmember	1033 Fifth St.	Clovis	CA	93612
Henry	Flores	County of Fresno DSS, Food Stamps/CalFresh		1209 E. Street	Fresno	CA	93706
Gregg	Foell	Coalinga-Huron Rec. & Parks	Comm. Ctr. Supervisor	P.O. Box 386	Coalinga	CA	93210
Norma	Forbes	Fresno Healthy Communities Access Partners	Executive Director	2043 E. Davisadero Street	Fresno	CA	93701
Chuck	Fowler	Cntrl Valley Indian Health Ctr.	Director	20 N. Dewitt, Ste.. 10	Clovis	CA	93612
Nathan	Fox	City of Kerman	Councilmember	850 S. Madera	Kerman	CA	93630
Louise	Franco	City of Selma	Councilmember	1710 Tucker St.	Selma	CA	93662
Marta	Frausto	Caltrans, District 06	Native American Liaison	1352 W. Olive Ave.	Fresno	CA	93728
Tom	Gaffery	CSU, Fresno	Parking & Transportation Manager	2311 E. Barstow Ave. M/S PO14	Fresno	CA	93740
Ben	Gallegos	City of Firebaugh	City Manager	1133 P Street	Firebaugh	CA	93622
Phillip	Gallegos	City of Kerman	Community Services Director	720 S. 8th St.	Kerman	CA	93630
Pat	Gallegos	Sierra Oaks Senior Citizens Association	President	33276 Lodge Road	Tollhouse	CA	93667
Eliseo	Gamino	West Hills Community College Dist.	Associate Dean	1511 Ninth St.	Firebaugh	CA	93622
Lonnie	Garcia	California Detoxification Corp./Baart Clinic		539 N. Van Ness Ave.	Fresno	CA	93728 -3419
Rick	Garcia	Parlier Senior Services		1100 E. Parlier Ave.	Parlier	CA	93648

Veronica	Garibay	Leadership Counsel		764 P Street, Suite 012	Fresno	CA	93721
Nancy	Garrett	Winners on Wheels		2842 Business Park Ave.	Fresno	CA	93727-1328
phoeng	Gip	Valley Center for the Blind		3417 W. Shaw Ave.	Fresno	CA	93711
Joel	Glick	City of Reedley	Community Services Director	100 N. East Ave.	Reedley	CA	93654
Oralia	Gomez	County of Fresno DSS, Cal Fresh and Medical	Program Manager	5693 E. Kings Canyon Road	Fresno	CA	93721
Jose Luis	Gonzalez	Fresno County Department of Social Services	Program Manager	5693 E. Kings Canyon Road	Fresno	CA	93727
Lupe	Gonzalez	Health Net/CalViva	Supervisor	1315 Van Ness Ave.	Fresno	CA	93721
Frank	Gonzalez	City of Sanger	Mayor	1700 Seventh St.	Sanger	CA	93657
Kenneth	Grey	City of Selma		1710 Tucker St.	Selma	CA	93662
Diana	Guerra-Silva	City of Orange Cove	Mayor Pro Tem	633 Sixth St.	Orange Cove	CA	93646
Joel	Gurss	County of Fresno, In-Home Supportive Services	Program Manager	3821 North Clark Street	Fresno	CA	93726
Linda	Halderman	29th District	Assemblymember	504 Van Ness Ave.	Fresno	CA	93721
Shonna	Halterman	City of Clovis	General Services Manager	155 N. Sunnyside Ave.	Clovis	CA	93611
Kevin	Hamilton	Clinica Sierra Vista	Deputy Chief of Programs	1945 North Fine Ave.	Fresno	CA	93727
Leonard	Hammer	City of Fowler	Councilmember	128 S. Fifth St.	Fowler	CA	93625
Bob	Hand	Resource for Independence-Central Valley	Executive Director	3008 N. Fresno St.	Fresno	CA	93703-1124
Bertha	Hansen			P.O. Box 1972	Fresno	CA	93718
John	Harris	Harris Ranch		Rt. 1, Box 420	Coalinga	CA	93210
Rev. Floyd	Harris, Jr.	National Action Network	President	313 W. Valencia	Fresno	CA	93706
Kathleen	Healy	Fresno Area Express	Administration Manager	2223 G St.	Fresno	CA	93706
Maxine	Helman	United Health Centers		121 Barboza St	Mendota	CA	93540
Sherri	Hendrix	Orange Cove Sr. Ctr.	Coordinator	699 6th St.	Orange Cove	CA	93646
Yvonne	Hernandez	City of Fowler - Edwin Blayney Senior Center	Senior Center Coordinator	108 N. 3rd	Fowler	CA	93625
Mario	Hernandez	Fresno Blind		344 W.	Fresno	CA	93705

		Veterans		Shields Ave.			
Julia	Hernandez	City of San Joaquin	Mayor	P.O. Box 758	San Joaquin	CA	93660
Todd	Hill	Granite Construction Inc.	Mgr.	2716 S. Angus Ave.	Fresno	CA	93706
John	Holt	City of Clovis	Assistant City Manager	1033 Fifth St.	Clovis	CA	93612
Alvin	Horne			1223 E. Kaviland Ave.	Fresno	CA	93706
Wendi	Howard	Coalinga-Huron Recreation & Parks District	Recreation Supervisor	P.O. Box 386	Coalinga	CA	93210
Robert	Howk	Howk & Downing	California Senior Senator	1540 E. Shaw Ave. #122	Fresno	CA	93710
D. B.	Huesser	City of Orange Cove	Interim City Manager	633 Sixth Street	Orange Cove	CA	93646
Ron	Hughes	CalVans	Executive Director	1340 North Drive	Hanford	CA	93230
Charles	Hunnicutt	Veterans Services Fresno County	County Veteran Service Officer	1320 E. Shaw Ave., Suite 105	Fresno	CA	93710
Melissa	Hurtado	City of Sanger	Councilmember	1700 Seventh St.	Sanger	CA	93657
Bill	Hyatt	Central Valley Regional Center	Transportation Coordinator	4615 N. Marty Ave.	Fresno	CA	93722-7818
Jim	Ireland			320 S. I St.	Madera	CA	93637-4608
Wynema	Irigoyen	Delno Terrace Elderly Housing		1480 N. Delno Ave.	Fresno	CA	93728
Henry	Jeff	Choinumni Tribe	Chairman	452 S. Clovis Ave., Apt. 103	Fresno	CA	93727
Brady	Jenkins	City of Firebaugh	Mayor	1133 P. Street	Firebaugh	CA	93622
Bernard	Jimenez	County of Fresno, Public Works	Deputy Dir./Planning	2220 Tulare St., 6th Floor	Fresno	CA	93721
Kristie	Johnson	County of Fresno, Public Wks.	Public Works & Planning Dept.	2220 Tulare St., 6th Floor	Fresno	CA	93721
Trish	Johnson			22664 E. Edgar	Reedley	CA	93654
Jan	Kafton	National Fed. Of the Blind		3352 N. Marks, #107	Fresno	CA	93722
Alan	Kandel			6172 N.Gentry	Fresno	CA	93711
Karing	Kazarian	City of Fowler	Councilmember	128 S. Fifth St.	Fowler	CA	93625
Joanne	Keenen	Fresno County Dept. of Behavioral Health	S.E.E.S. Clinical Supervisor	4441 E. Kings Canyon Rd.	Fresno	CA	93702
Jacob	Keller	EDD	Employment Specialist	3302 N. Blackstone	Fresno	CA	93726

				Ave., Ste. 155			
Dayle	Keller	City of Sanger		1700 Seventh St.	Sanger	CA	93657
Leonard	Kelley	San Joaquin Gardens	Director	5555 N. Fresno St.	Fresno	CA	93710
Mark	Keppler	Coalition for Community Trails		538 W. Bedford	Clovis	CA	93611
Elizabeth	Kipp	Big Sandy Rancheria	Chairperson	P.O. Box 337	Auberry	CA	93602
Mikal	Kirchner	City of Selma	Director of Resources & Community Srvcs.	1710 Tucker St	Selma	CA	93662
Karin	Kirkendall	Dumna Tribal Council		P.O. Box 306	Auberry	CA	93602
Sue	Kiser	Federal Highway Admin.	Chief, Planning, Environment	650 Capitol Mall, Ste. 4- 100	Sacrament o	CA	95814
Pamela	Knight	Dept. of Rehabilitation		P.O. Box 24001	Fresno	CA	93779 -4001
Blake	Konczal	Fresno Area Workforce Investment Corp.	Chief Executive Officer	2125 Kern Street, Suite 208	Fresno	CA	93721
Harpreet	Kooner	County of Fresno, Transp. Div.	Public Works	2220 Tulare St., 6th Floor	Fresno	CA	93721
Barry	Kriebel	Sun-Maid Growers of CA	President	13525 S. Bethel	Kingsburg	CA	93631
Richard	Kriegbaum	United Way of Fresno Co.	President	4949 E. Kings Canyon Rd.	Fresno	CA	93727
Dwight	Kroll	City of Clovis	Planning Director	1033 Fifth St.	Clovis	CA	93612
John	Kunkel	City of Kerman	Interim City Manager	850 S. Madera Ave.	Kerman	CA	93630
Paul	Kwiatkows ki	Keolis Transit America	Division Manager	4488 N. Blackstone	Fresno	CA	93726
Ron	Lander	City of Coalinga	Councilmember	155 W. Durian	Coalinga	CA	93210
Julie	Larsen	USDA Forest Services		1600 Tollhouse Rd.	Clovis	CA	93611
Pam	Lassetter	Fresno Area Workforce Investment Corp.		2125 Kern Street, Suite 208	Fresno	CA	93721
Robert	Ledger	Dumma Wo-Wah Tribal Government	Chairman	P.O. Box 246	Friant	CA	93621
Tong	Lee	Stone Soup of Fresno	Social Worker	1345 E. Bulldog Lane	Fresno	CA	93710
Rey	Leon	City of Huron	Mayor	P.O. Box 339	Huron	CA	93234
Rey	Leon	San Joaquin Valley Latino Environmental Advancement Project	Executive Director	1515 E. Divisadero Ave.	Fresno	CA	93721

Mike	Leonardo	Fresno Co. Transp. Authority	Executive Director	2220 Tulare St. #411	Fresno	CA	93721
Sharon	Levy			6475 N. Sequoia Dr.	Fresno	CA	93711
Dana	Liberty	City of Fresno	Community Services FUN Coordinator	1515 E. Divisadero St.	Fresno	CA	93721
Jeff	Long	Fresno Area Express	Senior Regional Planner	2223 G St.	Fresno	CA	93706
Alan	Lopes	Catholic Churches	Senior Companion Program Director	149 North Fulton Street	Fresno	CA	93701
Elaine	Lopes	Catholic Charities		149 North Fulton	Fresno	CA	93701
Elsa	Lopez	City of Firebaugh	Councilmember	1133 P. Street	Firebaugh	CA	93622
Victor	Lopez	City of Orange Cove	Mayor	633 Sixth St.	Orange Cove	CA	93646
Patricia	Loza			2029 N. Orchard St. Apt. C	Fresno	CA	93703-2353
Emma	Lozito	Bella Vida Group Home		5284 N. Vernal Ave.	Fresno	CA	93722
Abel	Lua	City of San Joaquin	Councilmember	P.O. Box 758	San Joaquin	CA	93660
Ed	Lund	Fresno City College	Disabled Student Counselor	1101 E. University	Fresno	CA	93741
Helen	M.	Alcoholics Anonymous					
Nathan	Magsig	County of Fresno	Supervisor	2281 Tulare St., Room 300	Fresno	CA	93721
John	Mahler	Calwa Recreation & Park District	Director	4545 E. Church	Fresno	CA	93725
Diane	Maldonado	City of Parlier	Councilmember	1100 E. Parlier Ave.	Parlier	CA	93648
Dennis	Manning	FARRC	Vice President	1162 N. Chapel Hill Ave.	Clovis	CA	93611
Beth	Marney	KFSN-TV Channel 30	News Director	1777 G St.	Fresno	CA	93706
Brian	Marshall	City of Fresno	Dir. Of Transportation	2223 G Street	Fresno	CA	93706
Carlos	Martinez	City of San Joaquin	Grants Coordinator	P.O. Box 758	San Joaquin	CA	93660
Suzanne	Martinez	COG	Assistant Regional Planner				
Daniel	Martinez	City of Sanger	Councilmember	1700 Seventh St.	Sanger	CA	93657
Victor	Martinez	City of Mendota	Mayor Pro Tem	643 Quince St.	Mendota	CA	93640
Diane	Martinez	Pacific Gas & Electric Co.		705 P St.	Fresno	CA	93721
Nayamin	Martinez	Central California EJ Network	Coordinator				
Myrna	Martinez Nateras	Pan Valley Institute	Program Director	1440 W. Shaw Ave., Ste. A	Fresno	CA	93711

Michelle	Mastro	Valley Caregiver Resource Center.	Executive Director	3845 N. Clark St., Ste. 201	Fresno	CA	93726-4812
Chris	Mata	County of Fresno, Public Wks.	Sr. Planner	2220 Tulare St., 6th Floor	Fresno	CA	93721
Renee	Mathis	City of Clovis	Engineering Dept.	1033 Fifth St.	Clovis	CA	93612
Nancy	McCabe	Comprehensive Alcohol				CA	
John & Sally	McCarthy			812 "J" St.	Reedley	CA	93654
Lorena	Medibles	Caltrans, District 06	Transportation Planner	1352 W. Olive	Fresno	CA	93728
Buddy	Mendes	County of Fresno	Supervisor	2281 Tulare St., Hall of Records, # 300	Fresno	CA	93721
Joe	Mendes	Tranquillity Union High School		P. O. Box 457	Tranquillity	CA	93668
Rebecca	Mendibles	SER Jobs for Progress	Executive Director	255 N. Fulton St., #106	Fresno	CA	93701
Lorena	Mendibles	Caltrans, District 06	Associate Transportation Planning/D6	1325 W. Olive	Fresno	CA	93728
Gail	Miller	Caltrans Environmental	Deputy District Director-Planning	1352 W Olive Ave	Fresno	CA	93728
Larry	Miller			1584 E. Utah	Fresno	CA	93720
Patience	Milrod			844 N. Van Ness Ave.	Fresno	CA	93728
Juan M.	Montano	City of Parlier	Councilmember	1100 E. Parlier Ave.	Parlier	CA	93648
Edward	Moreno	County of Fresno, Dept. of Employment	Fresno Co. Dept of Employment & Temporary Assistance	4499 E. Kings Canyon Rd.	Fresno	CA	93702
Suzanne	Moreno	Encourage Tomorrow	Executive Director				
Albert	Movsesian			274 W. Sierra Ave.	Fresno	CA	93704
Jim	Mulligan	Reedley College	Student Activities	955 North Reedley Ave.	Reedley	CA	93654
John	Mulligan	City of Sanger	Deputy Public Wks. Dir.	1700 Seventh St.	Sanger	CA	93657
Al	Munoz	Fresno Area Express	ATU Vice President	2223 G St.	Fresno	CA	93706
John	Navarrette	County of Fresno	Co. Admin. Officer	2281 Tulare St., Hall of Records, #300	Fresno	CA	93721
Michael	Navarro	Caltrans, District 06	Senior Transportation Planner	P.O. Box 12616	Fresno	CA	93778
Delfino	Neira	Fresno County Department of Social Services	Director	2135 Fresno Street, Suite 100	Fresno	CA	93718

Bill	Nijjer	City of Kerman	Councilmember	850 S. Madera	Kerman	CA	93630
Judith	Nishi	Fresno Area Express	Community Coordinator	2223 G St.	Fresno	CA	93706
Devin	Nunes	22st District	Congressman	264 Clovis Ave., Ste. 206	Clovis	CA	93612
Clint	Olivier	City of Fresno	Councilmember	2600 Fresno St.	Fresno	CA	93721
Eli	Ontiveros	City of Sanger	Mayor Pro Tem	1700 Seventh St.	Sanger	CA	93657
Jose	Ornelas	City of San Joaquin	Councilmember	P.O. Box 758	San Joaquin	CA	93660
Marian	Orvis	VACCHCS-GECU		2615 Clinton Ave.	Fresno	CA	93703-2286
Angie	Osborne	Traditional Choinumni Tribe	Chairperson	2787 N. Piedra R.	Sanger	CA	93657
Olivia	Ostergaard			525 E. Simpsonj	Fresno	CA	93704
Charlie	Ott	Clovis Unified School District	Director of Transportation	1490 Herndon Ave.	Fresno	CA	93611
Brian	Pacheco	County of Fresno	Supervisor	2281 Tulare St., Hall of Records #300	Fresno	CA	93721
Yolanda	Padilla	City of Parlier	Councilmember	1100 E. Parlier Ave.	Parlier	CA	93648
Daniel	Parra	City of Fowler	Maryor Pro Tem	128 S. Fifth Street	Fowler	CA	93625
Shun	Patlan	City of Parlier		1100 E. Parlier Ave.	Parlier	CA	93648
Henry T.	Perea	31st District	Assemblymember	2550 Mariposa Mall, Rm. 5031	Fresno	CA	93721
Felipe	Perez	City of Firebaugh	Mayor Pro Tem	1133 P. Street	Firebaugh	CA	93622
Roberto	Pimentel	City of Huron	Councilmember	P.O. Box 339	Huron	CA	93234
Minerva	Pineda	City of Orange Cove	Councilmember	633 Sixth St.	Orange Cove	CA	93646
Frank E. Z.	Pinon	City of Reedley	Mayor Pro Tem	1717 Ninth St.	Reedley	CA	93654
Cindy	Pishione	Alternate Ways		2517 W. Shaw Ave.	Fresno	CA	93711
Hilda	Plasencia	City of Huron	Mayor Pro Tem	P.O. Box 339	Huron	CA	93234
Dave	Pomaville	County of Fresno Department of Public Health	Director	1221 Fulton Mall	Fresno	CA	93721
Debbie	Poochigian	County of Fresno	Supervisor	2281 Tulare St., Hall of Records, #300	Fresno	CA	93721
David	Powell			2210 Dawson	Clovis	CA	93611

				Cove Lane S.			
Tara	Powers-Mead	CSU Fresno - ASI	Staff Director	5280 N. Jackson MS SU 32	Fresno	CA	93740
Mike	Prandini	Building Industry Association of Fresno/Madera	Ex. V. President	420 Bullard, Ste. 105	Clovis	CA	93612
Justin	Preas	United Health Center of the SJV	Chief Operation Officer	517 S. Madera Ave.	Kerman	CA	93630
Preston	Prince	Fresno Housing Authority	Executive Director	P. O. Box 11985	Fresno	CA	93776
Willma	Quan-Shecter	City of Fresno	City Manager	2600 Fresno St.	Fresno	CA	93721
Yvette	Quiroga	County of Fresno, Public Wks.	Public Works & Planning Dept.	2220 Tulare St., 6th Floor	Fresno	CA	93721
Steve	Raine	City of Coalinga	Councilmember	155 W. Durian	Coalinga	CA	93210
Walter	Ramirez	Centro Binacional Para El Desarrollo Indigena Oaxaqueno (CBDIO)	Assistant Director	744 North Abby Ave.	Fresno	CA	93701
Lori	Ramirez	ARC Fresno	Executive Director	4567 N. Marty Ave., Ste. 101	Fresno	CA	93722-7836
Ron	Ramsey	City of Coalinga		155 W. Durian	Coalinga	CA	93210
Yolanda	Randles	West Fresno Family Resource Center	Executive Director	302 Fresno Street	Fresno	CA	93706
Steve	Rapada			303 Shoemaker Ave	Reedley	CA	93654
Robin	Ray			5024 E Laurel	Fresno	CA	93727
Isela	Rea	Mendota Sr. Ctr.	Nutrition Site Coord.	643 Quince St.	Mendota	CA	93640-2334
David	Reed	Valley Caregiver Resource Center	OASIS Program Manager	3845 N. Clark St., Ste. 201	Fresno	CA	93726-4812
Jim	Remoon	Dumma	Cultural Resources Manager	742 Foutain Way	Fresno	CA	93704
Scott	Robertson	City of Selma	Councilmember	1710 Tucker St.	Selma	CA	93662
Jean	Robinson	Fresno Madera Area Agency on Aging	Executive Director	3837 N. Clark St.	Fresno	CA	93726
Margarita	Rocha	Centro La Familia	Executive Director	302 Fresno St., Ste. 102	Fresno	CA	93706
Gary	Rodney	City of Sanger	Code Enforcement Officer	1700 Seventh St.	Sanger	CA	93657
Robert	Rogers			2737 S Bardell	Fresno	CA	93706
Michelle	Roman	City of Kingsburg	Mayor	1401 Draper St.	Kingsburg	CA	93631
Oscar	Rosales	City of Mendota	Councilmember	643 Quince St.	Mendota	CA	93640
Lucy	Ruiz	KGPE-TV Channel	Public Info. Officer	5035 E.	Fresno	CA	93727

		47		Mckinley Ave.			
Marcia	Sablan	City of Firebaugh	Councilmember	1133 P. Street	Firebaugh	CA	93622
Syed	Sadredin	San Joaquin Valley Air District	Executive Director	1990 E. Gettysburg	Fresno	CA	93726
Isabel	Saldivar	City of Firebaugh	Senior Center Coordinator	1601 Thomas Convoy Ave.	Firebaugh	CA	93622
Charles	Sant'agata		Executive Dir.				
Shaun	Schaefer	City of Fresno	Community Services Div. Mgr.	1515 E. Divisadero St.	Fresno	CA	93721
Ashlee	Schmal	Kingsburg Senior Center	Senior Citizen Coordinator	1450 Ellis St.	Kingsburg	CA	93631
Kathy	Seiler			2343 E. Niles Ave.	Fresno	CA	93720
Luke	Serpa	City of Clovis	City Manager	1033 Fifth St.	Clovis	CA	93612
Sarah	Sharpe	Fresno Metro Ministry	Env. Health Dir.	4270 N. Blackstone Ave., #212	Fresno	CA	93726
Cynthia	Shore-Harris	Fresno Co. Economic Development Corp.	Marketing Director	906 N St., Ste.. 120	Fresno	CA	93721
Robert	Silva	City of Mendota	Councilmember	643 Quince St.	Mendota	CA	93640
Joanne	Silvestrom	Goodwill Industries of SJV		6437 N. Blackstone Ave.	Fresno	CA	93710-3508
Jim	Simonian	City of Fowler	Councilmember	413 E. Curtis	Fowler	CA	93625
MaryJane	Skjellerup	Youth Leadership Institute	Senior Director of Programs, Central Valley	550 E. Shaw Ave.	Fresno	CA	93710
Roger	Slingerman	Central California United Cerebral Palsy	Executive Director	4224 N. Cedar	Fresno	CA	93726
Jake	Smith	Dept. of Trans., Div. Of Mass Transp.	Division Chief, TDA & Training	P.O. Box 942874	Sacramento	CA	94273-0001
Ray	Soleno	City of Reedley	Councilmember	1717 Ninth St.	Reedley	CA	93654
Jorge	Solorio	City of Huron	Councilmember	P.O. Box 339	Huron	CA	93234
Steve	Son	County of Fresno, /Public Wks	Deputy Director	2220 Tulare St., 6th Floor	Fresno	CA	93721
Esmeralda	Soria	City of Fresno	Councilmember	2600 Fresno St.	Fresno	CA	93721
Gina	Sotelo			1665 N. Marks, #173	Fresno	CA	93722
Paul	Spraetz			1893 Menlo Ave.	Clovis	CA	93611
Teressa	Staples			540 S. Peach Ave.	Fresno	CA	93727
Rick	Steitz	Fresno Area Express	ATU President	2223 G St.	Fresno	CA	93706
Moses	Stites	FCRTA	General Manager				

Joe	Tacchino			1104 W. Brown	Fresno	CA	93705
Daniel	Tamayo Jr.	City of Huron	Councilmember	P.O. Box 339	Huron	CA	93234
David	Tamblin	County of Fresno DSS, Cal Learn	County of Fresno	4452 East Kings Canyon Road	Fresno	CA	93702
Patricia	Taylor	Madera Co. Transp. Comm.	Executive Director	2001 Howard Rd., Ste. 201	Madera	CA	93637
Rob	Terry	City of Reedley	Community Development Director	1733 9th Street	Reedley	CA	93654
Philip	Traynor	Hospice of Fresno, CA		1303 E. Herndon Ave.	Fresno	CA	93720-9860
Robert	Trout	Traffic Engineering Services		647 E. Quincy Ave.	Fresno	CA	93720-2127
Keith	Turner	Dumna Tribal Council Heritage Comm.	Representative	P.O. Box 306	Auberry	CA	93602
David G.	Valadao	21th District	Congressman	101 North Irwin Street, Suite 110B	Hanford	CA	93230
Freddy	Valdez	City of Firebaugh	Councilmember	1133 P. Street	Firebaugh	CA	93622
Alex P.	Valdez	I-5 Social Services Program	Executive Director	6621 N. Ferger Ave.	Fresno	CA	93704
Betty	Vallejo	City of San Joaquin	Councilmember	P.O. Box 758	San Joaquin	CA	93660
Brain	Vang	Center for New Americans	Board President	4879 E. Kings Canyon Rd.	Fresno	CA	93727
Andy	Vidak	16th District	Senator	2550 Mariposa, Ste. 2016	Fresno	CA	93721
Raul	Villanueva	City of Parlier	Mayor Pro Tem	13330 E. Cypress Ave.	Parlier	CA	93648
Nathan	Vosburg	City of Coalinga	Mayor	155 W. Durian	Coalinga	CA	93210
Mary	Wallace	San Joaquin Valley Health Consortium	Director	6356 N. Fresno St., Ste. 102	Fresno	CA	93710
Robert	Ward	Community Medical Centers	Senior VP/Chief Legal Officer	P.O. Box 1232	Fresno	CA	93715-1232
Alan	Weaver	County of Fresno, Public Wks.	Director	2220 Tulare St., 6th Floor	Fresno	CA	93721
Steve	Weil			588 W. Barstow	Fresno	CA	93704
John	Wells	Del Monte	Area Manager	P.O. Box 7	Kingsburg	CA	93631-0007
Bob	Whalen	City of Clovis	Mayor	1175 N. Chapel Hill	Clovis	CA	93611
Steve	White	City of Clovis	City Engineer	1033 Fifth	Clovis	CA	93612

				St.			
Bruce	Whitsitt	Poverello House		P.O. Box 12225	Fresno	CA	93777
Arthur	Wille	County of Fresno	County Counsel	2220 Tulare St., 5th Fl.	Fresno	CA	93721
Rose	Willems	The Advocate	Advocate	4538 E. Weldon	Fresno	CA	93703
Terry	Williams			1058 E. Magell Ave.	Fresno	CA	93710
Butch	Wilson	Canteen of Fresno	President	527 L St.	Fresno	CA	93721
Kenneth	Woodrow	Michahai Wuksachi Band of Eshom Valley	Chairman	1179 Rockhaven Ct.	Salinas	CA	93906
Dottie	Wright			1387 S. Karen Ave.	Fresno	CA	93727
Cindy	Wylie	Maston Towers		1240 Broadway Plaza	Fresno	CA	93721
Gary	Yep	City of Kerman	Mayor Pro Tem	P.O. Box 404	Kerman	CA	93630
Kathy	Yoshida	DHHSC		5340 N. Fresno St.	Fresno	CA	93710
Vicki	Zehrun			1590 W. Browning	Fresno	CA	93711
Tom	Zizzo	Big Sandy Rancheria Tribe	Tribal Administrator	P.O. Box 337	Auberry	CA	93602

Attachment C
Information Gathering Meeting Attendance Lists

UNMET TRANSIT NEEDS INFORMATION GATHERING MEETING TUESDAY, MARCH 13, 2018 WEST SIDE OF FRESNO COUNTY – MENDOTA, CA SIGN-IN SHEET		
NAME	ADDRESS	PHONE
Moses Stites	FCRTA	(559) 233-6789
Jeff Long	Fresno COG	(559) 621-1436
Todd Sobrado	Fresno COG	(559) 621-1532

UNMET TRANSIT NEEDS INFORMATION GATHERING MEETING MONDAY, MARCH 19, 2018 EAST SIDE OF FRESNO COUNTY – SELMA, CA SIGN-IN SHEET		
NAME	ADDRESS	PHONE
Jeff Long	Fresno COG	(559) 621-1436
Reyna Rivera	1710 Tucker, Selma, CA	(559) 891-2200
Mikal Kirchner	2301 Selma St., Selma, CA	(559) 891-2237
Neil Costanzo	575 E. Locust #115, Fresno, CA	(559) 261-0163
Bryant Hemby	1710 Tucker, Selma, CA	(559) 891-2209
Michael Kain	1711 Tucker, Selma, CA	(559) 891-2211
Romeo Shipley	1710 Tucker, Selma, CA	(559) 305-3535
Ralph Reyensa	1948 High Street, Selma, CA	(559) 891-2310
Rose Robertson		
Monty Cox	3110 W. Neilsen, Fresno, CA	(559) 263-8004
Isaac Moreno	1710 Tucker, Selma, CA	(559) 891-220
Jonmari Laling	Selma High School	(559) 898-6550
Karyme Garcia	3449 Mitchell Ave.	(559) 856-3688
Alissa Vargas	2435 Orange Ave.,	(559) 860-9596
Allyssa Ramirez	7654 Ellarison	(559) 898-9879
Natalia Martinez	7595 S. Peach, Fowler, CA	(559) 856-0231
Kiran Mehmi	2655 Yerba St., Fowler, CA	(559) 558-6969
Harmanjeet Kaur	2730 B. Saginaw Ave., Fowler, CA	(559) 480-7332
Chloe Mendoza	2423 Chaparal St., Fowler, CA	(559) 321-4402
Nelson Schwab	3215 Love St.	(559) 859-9272
Shane Ferrell	28978 Rd. 48, Visalia	(559) 308-0762
Laura Brown	908 Davis	(559) 769-7525
Bob Allen	1315 Maple, Selma, CA	(559) 896-2229
Char Tucker	2411 Country Club Ln	(559) 289-7848
Steve Johnson	2042 2 nd St.	(559) 896-4546
Paul Demmers	2861 A St. Selma, CA	(559) 891-2212
Theresa Herrera	3526 Hill Street	(559) 460-7097
Rita Becerra	3527 Hill Street, Selma, CA	(559) 930-5152

UNMET TRANSIT NEEDS INFORMATION GATHERING MEETING TUESDAY, MARCH 20, 2018 CLOVIS METROPOLITAN AREA SIGN-IN SHEET		
NAME	ADDRESS	PHONE
Jeff Long	Fresno COG	(559) 621-1436
Todd Sobrado	Fresno COG	(559) 621-1532
Jandle Del Campo	3120 W. Nielson, Fresno, CA	(559) 263-8023
Amy Hance	850 4 th Street, Clovis, CA	(559) 324-2769
Luis Garcia	1636 Broadway St., #125 Fresno, CA	(214) 708-4998

UNMET TRANSIT NEEDS INFORMATION GATHERING MEETING WEDNESDAY, MARCH 21, 2018 WEST SIDE OF FRESNO COUNTY - KERMAN SIGN-IN SHEET		
NAME	ADDRESS	PHONE
Jeff Long	Fresno COG	(559) 621-1430
Monty Cox	3110 W. Neebon Ave., Fresno, CA	(559) 263-8004
Moses Stites	FCRTA	(559) 233-6789
John Kunkel	850 S. Maduna	(559) 846-9387
Phillip Gallegos	720 S. 8 th Street	(559) 846-9328

UNMET TRANSIT NEEDS INFORMATION GATHERING MEETING WEDNESDAY, MARCH 28, 2018 FRESNO METROPOLITAN AREA SIGN-IN SHEET		
NAME	ADDRESS	PHONE
Jeff Long	Fresno COG	(559) 621-1436
Todd Sobrado	Fresno COG	(559) 621-1532
Bill Hyatt	CVRC	(559) 276-4341
Janelle Del Campo	FCRTA	(559) 263-0023
Moses Stites	FCRTA	(559) 233-6789
Rick Steitz	1056 W. Fremont	
Amanda Monaco	1460 N. Wishon, Fresno, CA	(352) 359-0963
Monty Cox	3110 W. Nielsen, Ave., Fresno, CA	(559) 263-8004
Bethany Berube	155 N. Sunnyvale, Fresno, CA	(559) 324-2771

UNMET TRANSIT NEEDS INFORMATION GATHERING MEETING WEDNESDAY, APRIL 4, 2018 FRESNO METROPOLITAN AREA SIGN-IN SHEET		
NAME	ADDRESS	PHONE
Todd Sobrado	Fresno COG	(559) 621-1532
Karen Escamilla	P.O. Box 905, Fresno, CA	(559) 312-8238
Alma D. Mendoza	531 N. 3 rd , #A, Fresno, CA	(559) 647-2377

Steve Burton	2811 W. California, Ave., Fresno, CA	(559) 369-6373
Yonas Paulos	2115 Inyo St., Apt. 2016, Fresno, CA	(559) 495-0585

**UNMET TRANSIT NEEDS
INFORMATION GATHERING MEETING
THURSDAY, APRIL 5, 2018
FRESNO METROPOLITAN AREA
SIGN-IN SHEET**

NAME	ADDRESS	PHONE
Jeff Long	Fresno COG	(559) 621-1436
Todd Sobrado	Fresno COG	(559) 621-1532

**UNMET TRANSIT NEEDS
INFORMATION GATHERING MEETING
THURSDAY, APRIL 19, 2018
EAST SIDE OF FRESNO COUNTY - PARLIER
SIGN-IN SHEET**

NAME	ADDRESS	PHONE
Todd Sobrado	Fresno COG	(559) 621-1532
Moses Stites	FCRTA	(559) 233-6789
Monty Cox	3110 W. Neebon Ave., Fresno, CA	(559) 263-8004

**Attachment D-1
Unmet Needs Comment – Brazil via CVRC**

**2018 Unmet Transit Needs
Comment Form**

Name*:

Email:

City*: Ph. Number:

Zip*:

During the past week (7 days), on how many days have you ridden the bus?
 1 2 3 4 5 6 7

**RECEIVED
MAR 13 2018
CVRC-FRESNO**

1. Which transit system(s) are you requesting improvements to?*

<input checked="" type="checkbox"/> Fresno Area Express	<input type="checkbox"/> FAX Handy Ride
<input type="checkbox"/> Clovis Stageline	<input type="checkbox"/> Fresno County Rural Transit
<input type="checkbox"/> Clovis Round-Up	<input type="checkbox"/> Fresno Economic Opportunities Commission
<input type="checkbox"/> Other: <input type="text"/>	

2. Describe the transit improvement(s) you are requesting. To effectively evaluate your comment, please provide the nearest cross street (or area of town where you live), your destination, day of week, and approximate time of day that you are interested in making your trip.*

I would like to have a new route added for FAX to add a cross town Herndon bus from Milburn + Herndon to Villa + Herndon. There are doctor's offices and a school along the way. St. Agnes Hospital would be on the route.

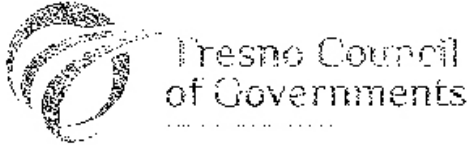
3. Describe the individuals who would need the service. Include age group, financial constraints, and whether they have disabilities that would require special services.*

There are elderly, handicapped and students that would benefit from the service.

Your comments will be compiled in a report on Unmet Transit Needs. If you provide your contact information, you will receive a notice once the report is available for review. Please return form to:

Bill Hyatt, SSTAC Chairman
 Central Valley Regional Center, Inc.
 4615 North Marty
 Fresno, CA 93722 Fax no: (559) 276-4360
 comment@fresnocog.org

Attachment D-1
Official Response to Unmet Needs Comment Received – Brazil via CVRC



2000 Riverside Blvd., Ste. 201 Tel: 559-233-4148
Fresno, California 93721 Fax: 559-233-8641
www.fresnoco.org

May 23, 2018

Mr. Eugene Brazil
brazil8646@gmail.com
(559) 519-5751

Dear Mr. Brazil,

We have received your unmet needs comments and Fresno Area Express has provided responses to the comments received.

I would like to have a new route added. For FAX to add a cross town Herndon bus from Milburn & Herndon to Villa & Herndon. There are doctor's offices and a school along the way. St. Agnes Hospital would be on the route.

Fresno Area Express just completed a route restructuring project that analyzes the current FAX fixed-route network within the context of current use patterns and data. After extensive feedback from the public, a series of recommendations is being prepared for the City Council for the City of Fresno to review and take action, if so desired.

After extensive analysis that included transit rider surveys, interviews and ridership data from buses servicing the area, it was determined that there isn't a sufficient need to justify route changes in the area. As a result, service changes are not being recommended in the Fresno Area Express Route Restructuring Study going before the City Council for the City of Fresno. However, staff will continue to monitor the situation for changes.

- City of Clovis
- City of Coalinga
- City of Hanford
- City of Kingsburg
- City of Lemoore
- City of Merced
- City of Madera
- City of Modesto
- City of Orland
- City of Reedley
- City of Sacto
- City of Shafter
- City of Sutter
- City of Wasco
- City of Yuba
- County of Fresno

Sincerely,

A handwritten signature in black ink that reads "Bill Hyatt".

Bill Hyatt
SSTAC Chairman

**Attachment D-1
Unmet Needs Comment – Ray via CVRC**

NATIONAL PARKS
Robin Ray
5024 E Laurel Ave
Fresno, CA 93727-3924

**2018 Unmet Transit Needs
Comment Form**

NATIONAL PARKS
Robin Ray
5024 E Laurel Ave
Fresno, CA 93727-3924

Name*: ROBIN RUTH RAY

Email: _____

City*: _____ Ph. Number: 458-0189 / 360-0364 ²⁸²¹

Zip*: 93727-3924

During the past week (7 days), on how many days have you ridden the bus?
 1 2 3 4 5 6 7

1. Which transit system(s) are you requesting improvements to?*

<input type="checkbox"/> Fresno Area Express <input checked="" type="checkbox"/> Clovis Stagetline <input checked="" type="checkbox"/> Clovis Round-Up <input checked="" type="checkbox"/> Other: _____	<input checked="" type="checkbox"/> FAX Handy Ride <input checked="" type="checkbox"/> Fresno County Rural Transit <input checked="" type="checkbox"/> Fresno Economic Opportunities Commission
--	---

RECEIVED
APR 03 2018
CVRC-FRESNO

2. Describe the transit improvement(s) you are requesting. To effectively evaluate your comment, please provide the nearest cross street (or area of town where you live), your destination, day of week, and approximate time of day that you are interested in making your trip.*

I'D LIKE TO SEE THE LOOK (HINT) TOUR TULARE-PC ON WILLOW RETURNED STOP AT I CAN NOT WALK TO BUS LINES ~~ON~~ HUNTING ON FILLMORE FROM HUNTING/FILLMORE TO KINGS CAYNON ON TULARE

3. Describe the individuals who would need the service. Include age group, financial constraints, and whether they have disabilities that would require special services.*

EPILEPSY, GAIT PROBLEMS WALKER AT TIMES FALL WHEEL WALKING AS WELL AS SEIZURES MIGRAINES, HBP

Your comments will be compiled in a report on Unmet Transit Needs. If you provide your contact information, you will receive a notice once the report is available for review. Please return form to:

Bill Hyatt, SSTAC Chairman
 Central Valley Regional Center, Inc.
 4615 North Marty
 Fresno, CA 93722 Fax no: (559) 276-4360
 comment@fresnocog.org

Bill please notify me of meetings HQ
RRP

NATIONAL PARKS
Robin Ray
5024 E Laurel Ave
Fresno, CA 93727-3924

NATIONAL PARKS
Robin Ray
5024 E Laurel Ave
Fresno, CA 93727-3924

**Attachment D-1
Official Response to Unmet Needs Comment Received – Ray via CVRC**



2035 Tulare St., Ste. 201 tel 559-233-4148
Fresno, California 93721 fax 559-233-9645

www.fresnocog.org

May 23, 2018

Mrs. Robin Ruth Ray
(559) 458-0189
(559) 360-0369

Dear Ms Ruth,

We have received your unmet needs comments and Fresno Area Express (FAX) has provided responses to the comments received.

I'd like to see the look (#10) took Tulare like on Willow returned – stop at Manning and Fillmore. I cannot walk to bus lines from (spelling)/Fillmore to Kings Canyon on Tulare. (NOTE: COG Staff had a brief telephone conversation with the person making the comment. The basis of this comment is how was she was personally affected by increasing the distance between stops on BRT. She now has to walk a little further to visit her dentist.)

City of Clovis
City of Coalinga
City of Firebaugh
City of Fowler
City of Fresno
City of Huron
City of Kernan
City of Kingsburg
City of Mendota
City of Orange Cove
City of Parlier
City of Reedley
City of San Joaquin
City of Sanger
City of Selma
County of Fresno

Prior to the implementation of Bus Rapid Transit (BRT), FAX completed a significant public outreach campaign on the changes in the system with BRT. In addition, an environmental analysis was completed to identify negative impacts of the project. FAX understands the impacts to a small group of riders, but the City Council approved the project for the larger population. One of the key factors in BRT is stops every ½ mile. This allows the bus to travel faster and the majority of the public surveyed supported this feature.

Fresno Area Express operates Handy Ride, the paratransit service for the City of Fresno. The purpose of Handy Ride is to provide transportation services to those members of the community who cannot functionally use the FAX fixed route buses.

If you are not already using Handy Ride, we encourage you to look at this as a solution to your transportation needs should you meet eligibility criteria.

Sincerely,

A handwritten signature in black ink that reads "Bill Hyatt". The signature is written in a cursive style with a large initial "B" and "H".

Bill Hyatt
SSTAC Chairman

CC: Jeff Long

Attachment D-1
Unmet Needs Comment – Fresno County Department of Social Services, Letter 1 of 2

Gentlemen,

I want to thank you for taking the time to conduct the FAX Route Plan Stakeholder Interview with The Fresno County Department of Social Services on 11/29/17. As discussed, we are in the process of consolidating our Metro Eligibility Services to one campus near the former Pelco campus at 3500 Pelco Way, Clovis, CA. The nearest bus route is FAX Route 45, which currently provides 60-minute frequency service. We are advocating on behalf of our clients and staff to change the frequency to 30-minute service. In addition, a bus route stop near N. Peach and W. Pontiac Way is recommended.

Here’s a snapshot of client traffic in our Metro Eligibility Intake Lobby locations (Senior Resource Center, Fairgrounds, “E” Street, Heritage, Sunnyside, Main and Commissary Buildings):

Table 1 shows our monthly average lobby traffic and our highest monthly lobby traffic. The lobby traffic used is based on a year’s worth of data from July 2016 through June 2017.

Total Monthly Average Lobby Traffic	Highest Monthly Lobby Traffic
34,061 clients	38,540 clients

Note: The traffic counts only include the primary adult checking in for service and does not account for additional adults and/or children who accompany them on their visits.

I’ve included some attachments we discussed during the meeting which support the need for this change. Please feel free to communicate with me should you have any additional questions.

Attachments:

- ✓ FAX Bus Pass/Tokens issuance FY 16-17
- ✓ Lobby Client Survey Sept 2017
- ✓ Fresno County DSS Map of Metro Office Locations
- ✓ Agreement with City of Fresno-FAX

Thank you,

Hector Medina-Program Manager
Department of Social Services
Strategic Planning and Development
2135 Fresno Street, Suite 100, Fresno, CA 93721
Desk (559)600-7534/Cell (559)285-5016
HMedina@co.fresno.ca.us
Administrative Assistant Deedee Wilson (559)600-2847

**Attachment D-1
Official Response to Unmet Needs Comment Received – Fresno County, Letter 1 of 2**



2035 Tulare St., Ste. 201 tel 559-233-4148
Fresno, California 93721 fax 559-233-9645

www.fresnocog.org

May 15, 2018

Hector Medina
Program Manager
Department of Social Services
Strategic Planning and Development
205 W. Pontiac Way Bldg 7, Clovis, CA 93612

Dear Mr. Medina,

We have received your unmet needs comments and Fresno Area Express has provided responses to the comments received.

We (Fresno County Department of Social Services) are in the process of consolidating our Metro Eligibility Services to one campus near the former Pelco campus at 3500 Pelco Way, Clovis, CA. The nearest bus route is FAX Route 45, which currently provides 60-minute frequency service. We are advocating on behalf of our clients and staff to change the frequency to 30-minute service. In addition, a bus route stop near N. Peach and W. Pontiac Way is recommended.

Here is a snapshot of client traffic in our Metro Eligibility Intake Lobby locations (Senior Resource Center, Fairgrounds, "E" Street, Heritage, Sunnyside, Main and Commissary Buildings):

Table 1 shows our monthly average lobby traffic and our highest monthly lobby traffic. The lobby traffic used is based on a year's worth of data from July 2016 through June 2017.

	Total Monthly Average Lobby Traffic	Highest Monthly Lobby Traffic
City of Clovis	34,061 clients	38,540 clients

- City of Coalinga
- City of Firebaugh
- City of Fowler
- City of Fresno
- City of Huron
- City of Keirnan
- City of Kingsburg
- City of Mendota
- City of Orange Cove
- City of Parlier
- City of Reedley
- City of San Joaquin
- City of Sanger
- City of Selma
- County of Fresno

The City of Fresno is currently in the process of completing a route restructuring study that has looked at making changes to routes in that area. We understand that the move to the former-Pelco campus is a long-term process that will be taking place through late 2019.

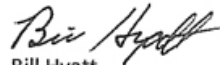
An increased frequency on route 45 has been identified in the Fresno Clovis Metropolitan Area FCMA Short Range Transit Plan (SRTP). The SRTP has identified other service issues that currently are unfunded. The service change requested would have a significant cost as it would increase the number of buses on the route from 3 to 6.

The Unmet Needs process is a State mandate to identify potential transit needs prior to Local Transportation Funds (LTF) funding being made available for street and road repairs. The City of Fresno allocates all of its LTF to public transit; an Unmet Needs finding in the FCMA will not serve to bring additional funds to the City of Fresno to implement service. The SSTAC did not find these concerns to qualify as an unmet need that is reasonable to meet for the fiscal year 2018-2019. As the relocation project continues, this service may be reevaluated.

Thank you for your participation in the Unmet Transit Needs process. We look forward to your continued support of public transit in Fresno County.

If you have any questions, please feel free to call me at (559) 276-4341, or if you prefer, you may send e-mail to BHYATT@cvrc.org.

Sincerely,



Bill Hyatt
SSTAC Chairman

CC: Moses Stites
Jeff Long
Amy Hance

Attachment D-1
Unmet Needs Comment – Fresno County via FCRTA

Hi Jeff and Bill,

I'm providing comments for the transit services available to the clients of The Department of Social Services. We serve clients at our Metro Fresno and Rural building locations (Selma, Kerman, Reedley and Coalinga). Some of the challenges for our transit dependent clients include:

Reedley and Coalinga-

Limited pick up/drop off times (they usually only have 1 pick/drop off time per day) and Limited pick up/drop off locations.

Selma - Challenges for transportation in Selma include clients wanting to travel from Selma to Parlier and Reedley, but there are no options for that. Reedley office has passes to go to Parlier but it's not available in Selma.

Kerman- The Westside Inter-City Transit only provides service to Firebaugh, Mendota & Kerman it doesn't include San Joaquin or Tranquility. There is only one pick up time in the AM and one drop off in the PM for each of the cities listed. The fare is different for one way, round trip or monthly pass for travel between cities in either direction.

Additional pick up and drop times are needed to service employed clients or clients attending community colleges and vocational training.

Metro Fresno (see attached e-mail sent during the FAX Route Plan Stakeholder Interview in December 2017)

I look forward to participating in further discussions on this topic during the Social Services Transit Advisory Council meetings.

Thank you,

Hector Medina-Program Manager
Department of Social Services
Strategic Planning and Development
205 W. Pontiac Way Bldg 7, Clovis, CA 93612
Desk (559)600-7534/Cell (559)285-5016
HMedina@co.fresno.ca.us
Administrative Assistant Deedee Wilson (559)600-2847

Attachment D-1
Official Response to Unmet Needs Comment Received – Fresno County, Letter 1 of 2



2035 Tulare St., Ste. 201 tel 559-233-4148
Fresno, California 93721 fax 559-233-9645

www.fresnocog.org

May 15, 2018

Hector Medina
Program Manager
Department of Social Services
Strategic Planning and Development
205 W. Pontiac Way Bldg 7, Clovis, CA 93612

Dear Mr. Medina,

We have received your unmet needs comments and Fresno County Rural Transit Agency has provided responses to the comments received.

Reedley and Coalinga- Limited pick up/drop off times (they usually only have 1 pick/drop off time per day) and Limited pick up/drop off locations.

Coalinga currently has an inter-city route with one (1) vehicle and an intra-city dial-a-ride route with one (1) that has suffered from driver shortage due to our current subcontractor. Reedley currently has an intra-city demand response route with 4 vehicles. In the future, FCRTA will be implementing two (2) new express routes, one starting in Orange Cove and the other in Coalinga, and will provide connection service into Fresno. The Orange Cove express route will have six (6) stops compared to fifteen (15) on the current inter-city route with a stop in Reedley. The Coalinga express route will have five (5) stops compared to (17) stops on the current inter-city route. FCRTA will be getting two (2) 35 ft BYD electric buses tentatively scheduled to arrive in September 2018 and will implement the EV buses on these express routes. Please reference FCRTA's website for routes and services; www.ruraltransit.org

City of Clovis

City of Coalinga

City of Firebaugh

City of Fowler

City of Fresno

City of Huron

City of Kerman

City of Kingsburg

City of Mendota

City of Orange Cove

City of Parlier

City of Reedley

City of San Joaquin

City of Sanger

City of Selma

County of Fresno

Selma - Challenges for transportation in Selma include clients wanting to travel from Selma to Parlier and Reedley, but there are no options for that. Reedley office has passes to go to Parlier but it's not available in Selma.

FCRTA currently has the Kingsburg to Reedley College route (1 vehicle) offering inter-city service pick ups and drop offs in Selma, Parlier, and Reedley. There is also intra-city service available in Parlier (1 vehicle), Reedley (4 vehicles) and Sanger (4 vehicles). Orange Cove inter-city transit (1 vehicle) also provides inter-city service through Orange Cove, Reedley, Parlier, Sanger and Fresno. Please reference FCRTA's website for routes and services; www.ruraltransit.org

Kerman- The Westside Inter-City Transit only provides service to Firebaugh, Mendota & Kerman it doesn't include San Joaquin or Tranquility. There is only one pick up time in the AM and one drop off in the PM for each of the cities listed. The fare is different for one way, round trip or monthly pass for travel between cities in either direction.

FCRTA currently has the Westside transit that provides service between Firebaugh, Mendota, and Kerman as well as San Joaquin transit that provides in-city and inter-city service from San Joaquin to Tranquility, Cantua Creek, Halfway, El Porvenir and Three Rocks. Service from San Joaquin and Tranquility to connections in Kerman is offered on Monday, Wednesday, and Friday. Service from Cantua Creek, Three Rocks, Halfway, El Porvenir to connections in Kerman is offered on Tuesday and Thursday. Please reference FCRTA's website for routes and services; www.ruraltransit.org

Additional pick up and drop times are needed to service employed clients or clients attending community colleges and vocational training.

The vocational training and colleges need to provide this supportive service outside of regularly scheduled fixed route hours through rideshare and vanpool services that can be coordinated by the schools and Department of Social Services.

Sincerely,


Bill Hyatt
SSTAC Chairman

CC: Moses Stites
Jeff Long
Amy Hance