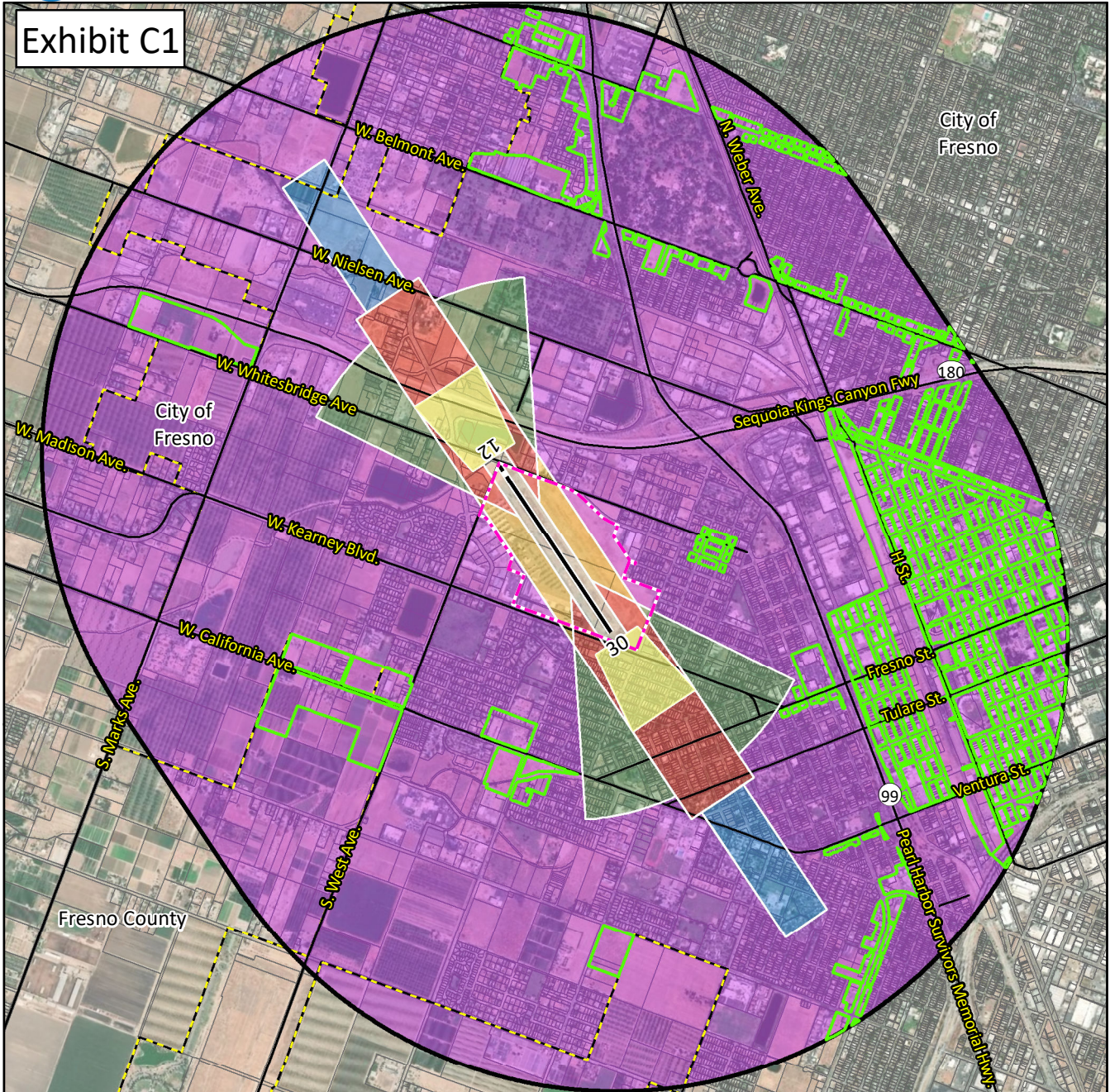




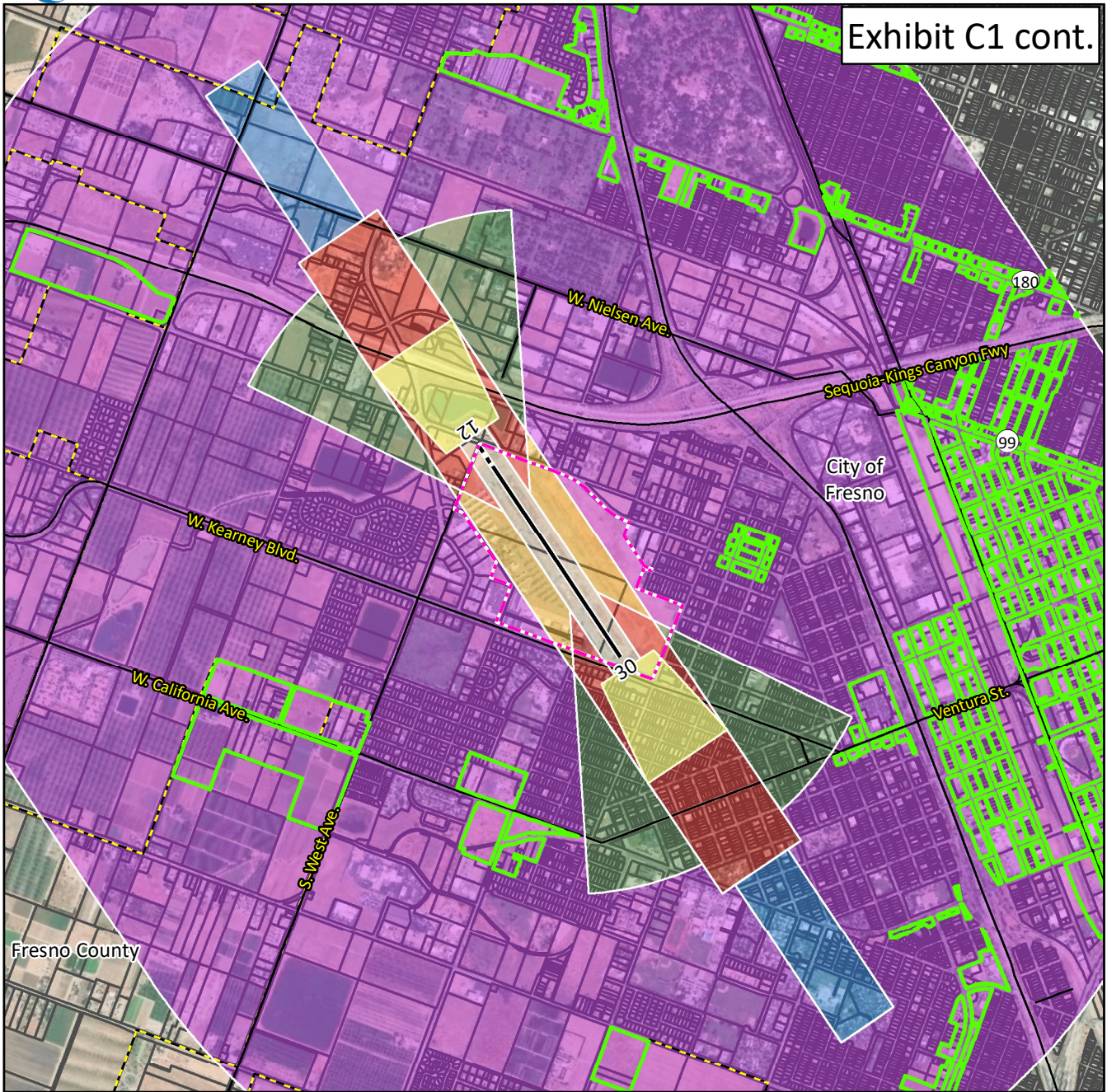
Exhibit C1



| | | | | |
|---------------------------------------------------------------------------------------------------------------------------------------------------------------------------------------------------------------------------------------------------------------------------------------------------------------------|-----------------------------------------------------------------------------------------------------------------------------------------------------------------------------------------------------------------------------------------------------------------|------------------------------------------------------------------------------------------------------------------------------------------------------------------------------------------------------------------------------------------------------------------------------------------------------------------------------------------------------------------------------------------------------------------|--|--|
| LEGEND | | Safety Zones⁴ | | |
| <ul style="list-style-type: none"> Existing Runway¹ Ultimate Runway¹ Airport Property¹ Parcel Boundary Municipal Boundary Streets Airport Influence Area (AIA)² Urban³ | <ul style="list-style-type: none"> 1. Runway Protection Zone 2. Inner Approach/Departure Zone 3. Inner Turning Zone 4. Outer Approach/Departure Zone 5. Sideline Zone 6. Traffic Pattern Zone | <p>¹Fresno Chandler Airport Layout Plan (2010). ²AIA drawn from Part 77 Conical Surface. See 14 CFR, Subchapter E, Part 77, §77.25. ³City of Fresno, 2018. ⁴Figure 3A, California Airport Land Use Planning Handbook (2011), and Coffman Associates Analysis. Sources: Fresno County Parcels, Fresno County Streets, ESRI Basemap Imagery (2016).</p> | | |



Exhibit C1 cont.

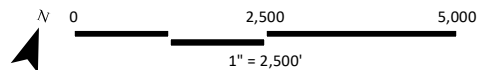


LEGEND

- Existing Runway¹
- - - Ultimate Runway¹
- ⋯ Airport Property¹
- ▭ Parcel Boundary
- - - Municipal Boundary
- Streets
- Urban²

Safety Zones³

- 1. Runway Protection Zone
- 2. Inner Approach/Departure Zone
- 3. Inner Turning Zone
- 4. Outer Approach/Departure Zone
- 5. Sideline Zone
- 6. Traffic Pattern Zone



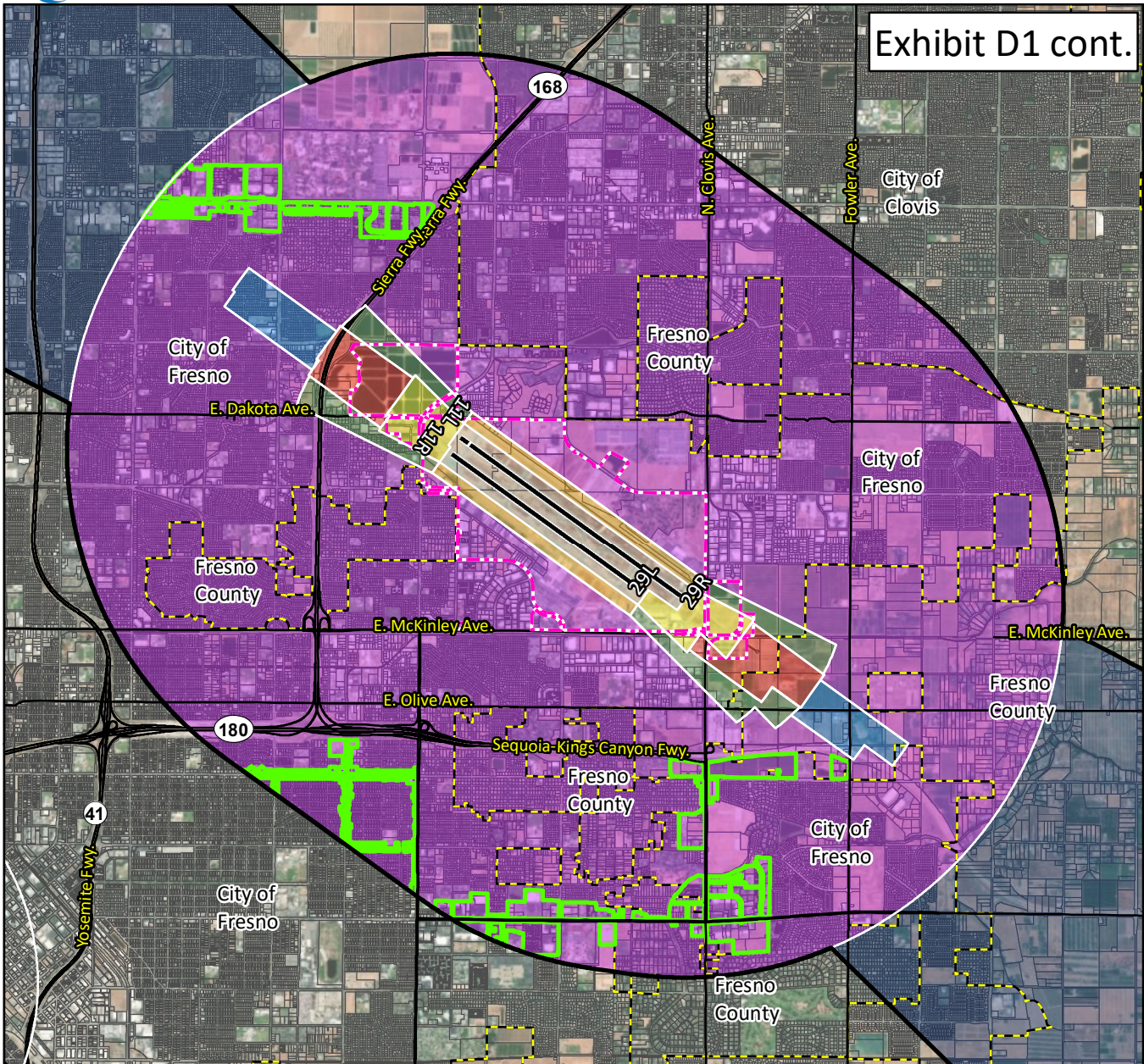
¹Fresno Chandler Airport Layout Plan (2010).

²City of Fresno, 2018.

³Figure 3A, California Airport Land Use Planning Handbook (2011), and Coffman Associates Analysis. Sources: Fresno County Parcels, Fresno County Streets, ESRI Basemap Imagery (2016).



Exhibit D1 cont.

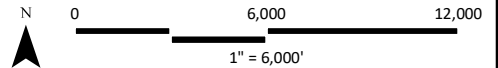


LEGEND

- Existing Runway¹
- Ultimate Runway¹
- Airport Property¹
- Parcel Boundary
- Municipal Boundary
- Streets
- Airport Influence Area (AIA)²
- Urban³

Safety Zones⁴

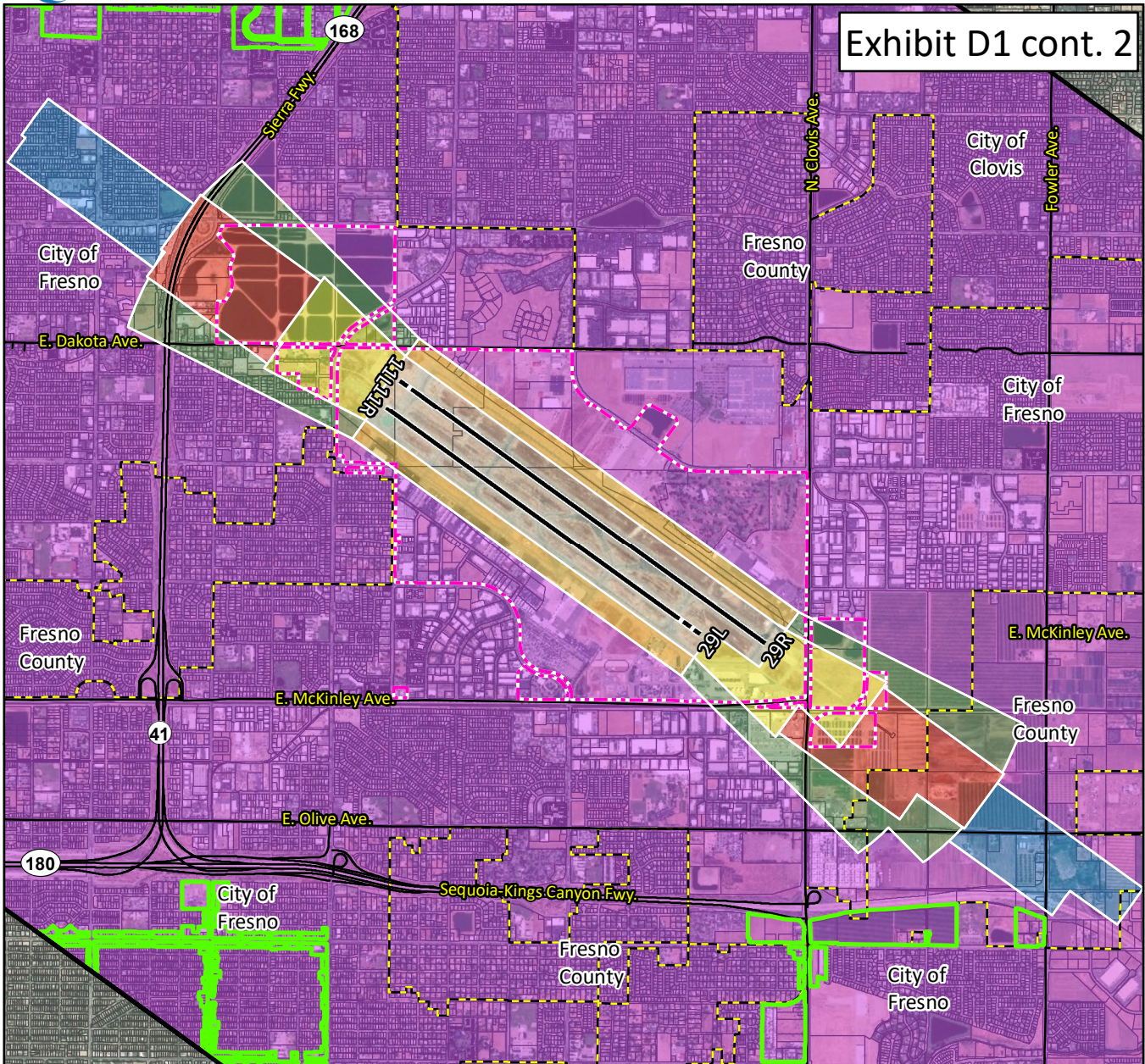
- 1. Runway Protection Zone
- 2. Inner Approach/Departure Zone
- 3. Inner Turning Zone
- 4. Outer Approach/Departure Zone
- 5. Sideline Zone
- 6. Traffic Pattern Zone
- 7. Precision Approach Zone



¹FresnoYosemite Intl. Airport Layout Plan (2013)
²AIA drawn from Part 77 Conical and Outer-Transitional surfaces. See 14 CFR, Subchapter E, Part 77, §77.25.
³City of Fresno, 2018.
⁴Figure 3B, California Airport Land Use Planning Handbook (2011), and Coffman Associates Analysis. Sources: Fresno County Parcels, Fresno County Streets, ESRI Basemap Imagery (2016).



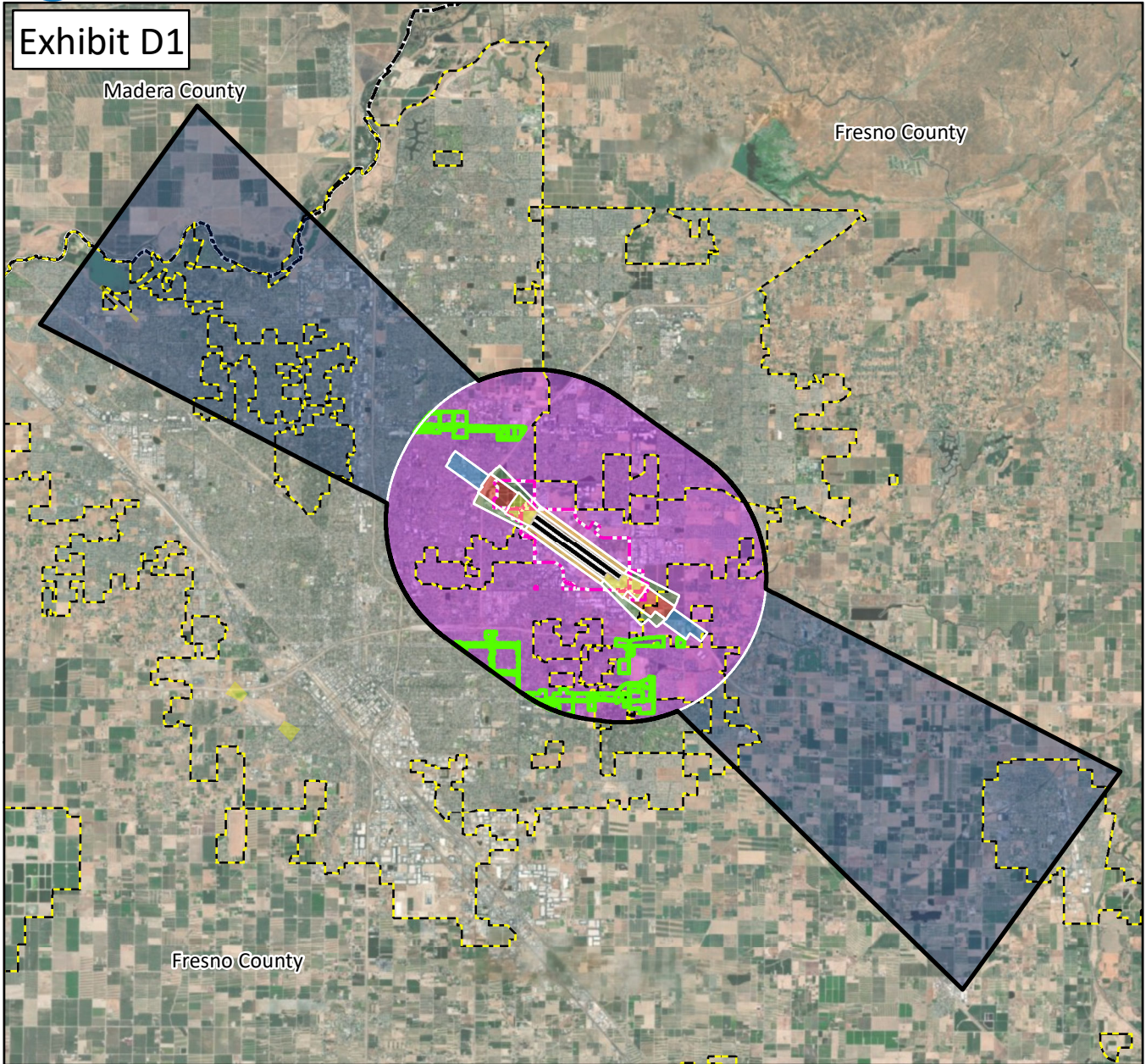
Exhibit D1 cont. 2



| | | | | | |
|----------------------------------------------------------------------------------------------------------------------------------------------------------------------------------------------------------------------|---------------------------------------------------------------------------------------------------------------------------------------------------------------------------|---------------------------------|--|--|--------------------------------------------------------------------------------------------------------------------------------------------------------------------------------------------------------------------------------------------------------------------------------------------------------------------------------------------------------------------------------------------------------------------------------------|
| LEGEND | | Safety Zones⁴ | | | ¹ Fresno Yosemite Intl. Airport Layout Plan (2013) ² AIA drawn from Part 77 Conical and Outer-Transitional surfaces. See 14 CFR, Subchapter E, Part 77, §77.25. ³ City of Fresno, 2018. ⁴ Figure 3B, California Airport Land Use Planning Handbook (2011), and Coffman Associates Analysis. Sources: Fresno County Parcels, Fresno County Streets, ESRI Basemap Imagery (2016). |
| Existing Runway ¹ Ultimate Runway ¹ Airport Property ¹ Parcel Boundary Municipal Boundary Streets Airport Influence Area (AIA) ² Urban ³ | 1. Runway Protection Zone 2. Inner Approach/Departure Zone 3. Inner Turning Zone 4. Outer Approach/Departure Zone 5. Sideline Zone 6. Traffic Pattern Zone | | | | |



Exhibit D1

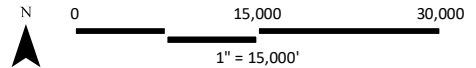


LEGEND

- Existing Runway¹
- Ultimate Runway¹
- Airport Property¹
- Municipal Boundary
- Airport Influence Area (AIA)²
- Urban³

Safety Zones⁴

- 1. Runway Protection Zone
- 2. Inner Approach/Departure Zone
- 3. Inner Turning Zone
- 4. Outer Approach/Departure Zone
- 5. Sideline Zone
- 6. Traffic Pattern Zone
- 7. Precision Approach Zone



¹FresnoYosemite Intl. Airport Layout Plan (2013)

²AIA drawn from Part 77 Conical and Outer-Transitional surfaces. See 14 CFR, Subchapter E, Part 77, §77.25.

³City of Fresno, 2018

⁴Figure 3B, California Airport Land Use Planning Handbook (2011), and Coffman Associates Analysis. Sources: Fresno County Parcels, ESRI Basemap Imagery (2016).