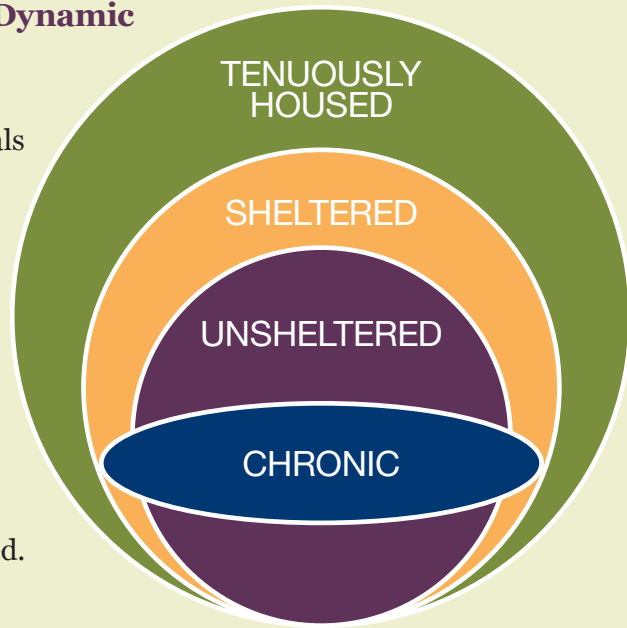


Homelessness is Complex

Homelessness is Dynamic and Situational

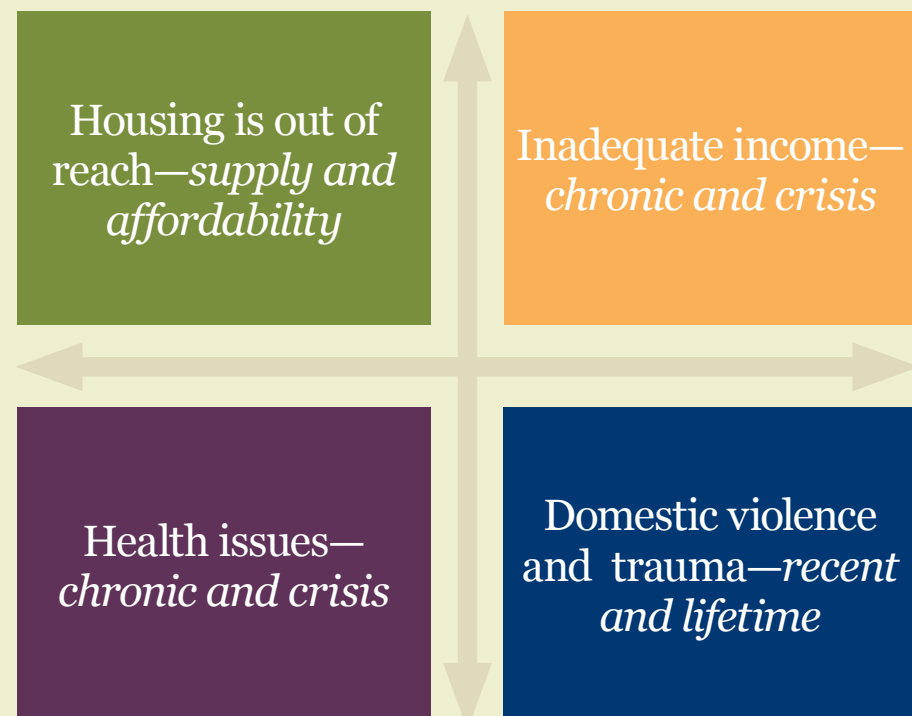
Across the Fresno community, individuals move in and out of homelessness daily. It's not always the same people who are homeless day after day. The faces fluctuate from day to day. Those who are chronically homeless are most likely to be unsheltered.



Causes of Homelessness

There are four important dimensions that are both causes and consequences of homelessness. Consistently, the lack of access to affordable housing is the primary driver of homelessness.

For instance, an individual may be experiencing health issues that directly lead to homelessness, or homelessness can cause health issues and loss of a job.



Overcoming homelessness

Henry

Vietnam Veteran, 1972–1975

A landlord-tenant disagreement left Henry, an Army Veteran, homeless in December 2017, three weeks before Christmas. While he was panhandling, two caseworkers, whom Henry now refers to as angels, approached him and helped him with a plan to get into an apartment supported by the VA.



- 10% of all homeless adults in California are Veterans.¹
- A disabled person receives only \$906/month from SSI, yet a modest one-bedroom apartment costs \$771/month, which is 85% of their monthly income.²
- Fresno County needs 41,108 more affordable rental homes to meet needs of its lowest-income renters.³

¹ U.S. Department of Housing and Urban Development. "2018 Annual Homeless Assessment Report."

² National Low Income Housing Coalition. "Out of Reach 2018: California."

<http://nlihc.org/oor/california> (accessed September 13, 2018)

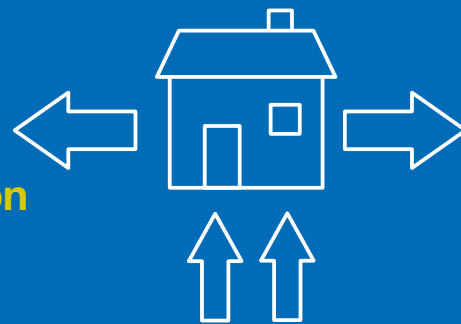
³ California Housing Partnership Corporation and Fresno Housing Authority. "Confronting Fresno county's rent and poverty crisis: a call for reinvestment in affordable homes." May 2016. <https://1p08d91kd0c03rlxhmhtydp-wpengine.netdna-ssl.com/wp-content/uploads/2018/04/Fresno-HNR-2018.pdf> (accessed September 25, 2018)

Community Driven Response is Required

Creating flow through the system to housing

Diversion

Crisis Resolution



Permanent Housing

Prioritize Unsheltered People With Housing Crisis Seeking Shelter

From National Alliance to End Homelessness, Emergency Shelter Learning Series

Street Home
FRESNO COUNTY



City of Fresno
Office of the Mayor
(559) 621-CITY



County of Fresno
County Administrative Office
(559) 600-1710

FRESNO VIBRANT
COMMUNITIES
QUALITY HOUSING
AUTHORITY ENGAGED RESIDENTS



Street Home
FRESNO COUNTY

*Comprehensively
Addressing Homelessness
in Our Community*



“No one should have to live or die on the streets of our Fresno County communities.”

SAL QUINTERO, CHAIRMAN
FRESNO COUNTY BOARD OF SUPERVISORS

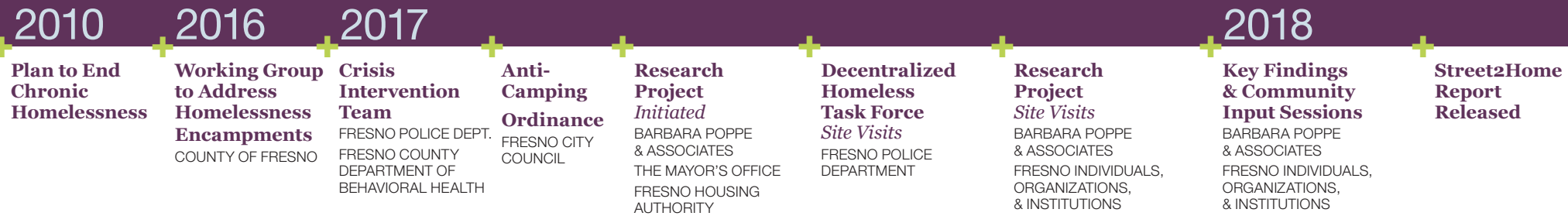


“A great community is able to maintain quality of life while affirming the dignity of every individual.”

LEE BRAND, MAYOR
CITY OF FRESNO

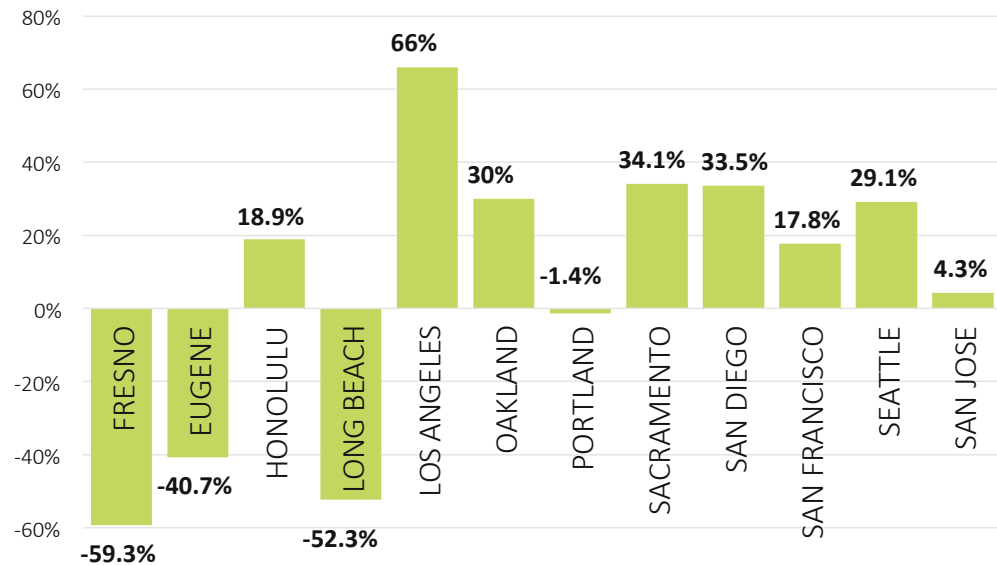


Timeline



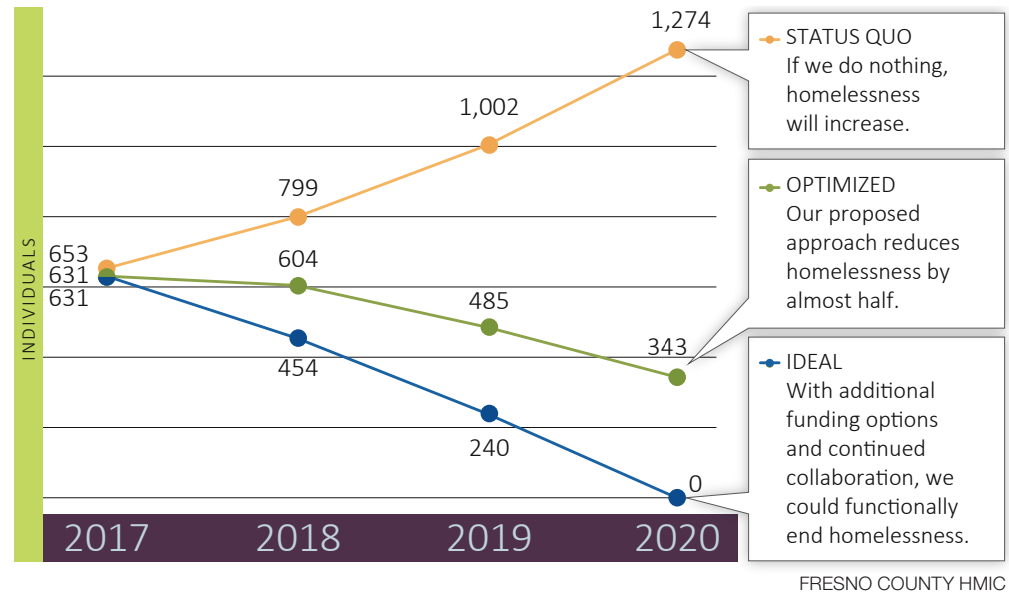
PROGRESS

Percent Change: Total Homelessness Compared to West Coast Cities



CHALLENGE

Chronic homelessness: projecting rising gap



Four Pillars: 13 Recommendations



1. Adopt Collective Impact Initiative and engage cross-sector community leaders
2. Educate and engage the entire community in solutions
3. Strengthen the data foundation—what gets measured, gets done



4. Scale up diversion and make consistent across community—and enhance points of access for housing and services
5. Preserve affordable housing options
6. Build and implement collaborative community solutions to reduce homelessness among domestic violence survivors



7. Align community programs to create a comprehensive crisis response network that provides person-centered and housing-focused service
8. Create new, low-barrier crisis housing options



9. Partner and recruit landlords to enhance and expand all types of housing placement options and supports
10. Scale up rapid re-housing
11. Increase permanent supportive housing
12. Aggressively expand non-traditional permanent housing options
13. Design a cross-sector demonstration for people who experience street homelessness and are frequent users of public services.

Focusing on Four Pillars



Engage community & align resources

STRATEGY

Adopt a Collective Impact Initiative approach: Establish a new public-private collaboration to strengthen data collection and usage; define homelessness as a community issue to garner added resources and supportive services for joint solutions.



Reduce inflow to homelessness

STRATEGY

Increase diversion and crisis assistance: Consistent, community-based diversion, service connections, resolve housing stability issues, and divert from entering homelessness.



Improve crisis response

STRATEGY

Create low-barrier crisis housing options: Better engage individuals at-risk of homelessness and those already unsheltered. Employ robust permanent housing placement solutions with case management and supportive services, as needed.



Expand permanent housing options

STRATEGY

Establish a partnership to connect unsheltered, chronically homeless individuals to permanent supportive or other housing. New resources include additional Bridge Housing leading to 600 Fresno Housing Authority Housing Choice Vouchers accompanied with case management services provided by the County.