

J1 Shade Structure Front Elevation

Scale: 3/16" = 1'-0"

Supplier: DesignSpace Modular Buildings

The unit is 2160 Sq.FT metal clad. It has two ADA restrooms, three private offices and a large conference room. It is insulated and includes central heating and air conditioning.

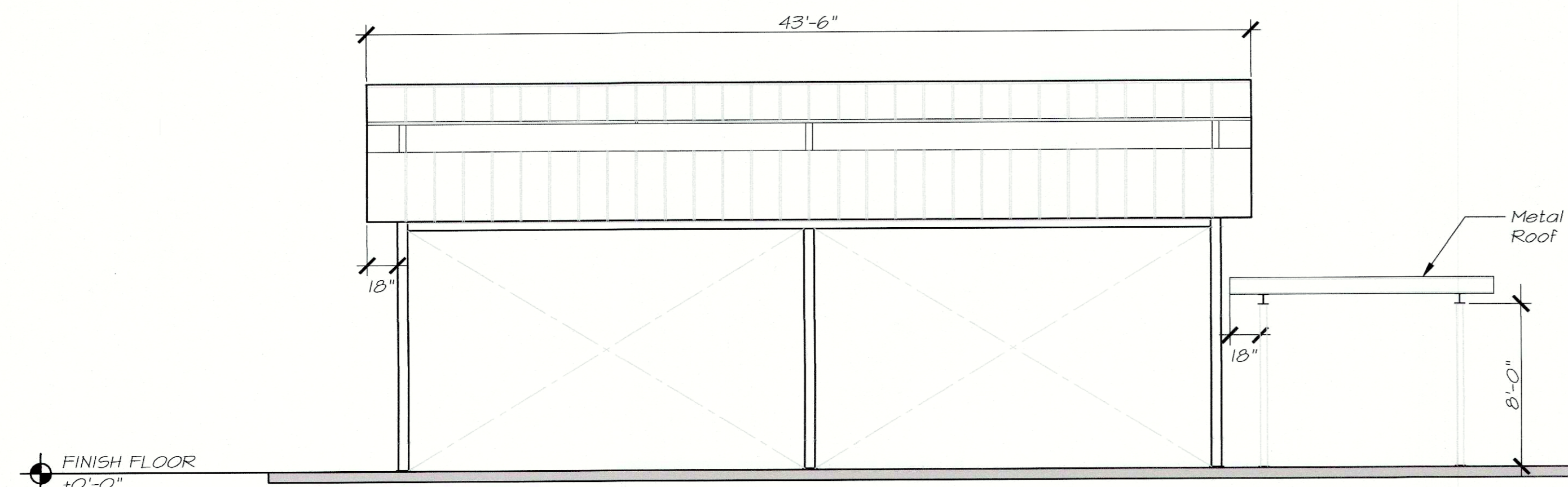


J9 36' x 60' Modular Office - New

No Scale

Supplier: DesignSpace Modular Buildings

The unit is 160 Sq.Ft metal clad. It has an office space with built-in workstation. It is fully insulated and includes a HVAC system.



F1 Shade Structure Side Elevation

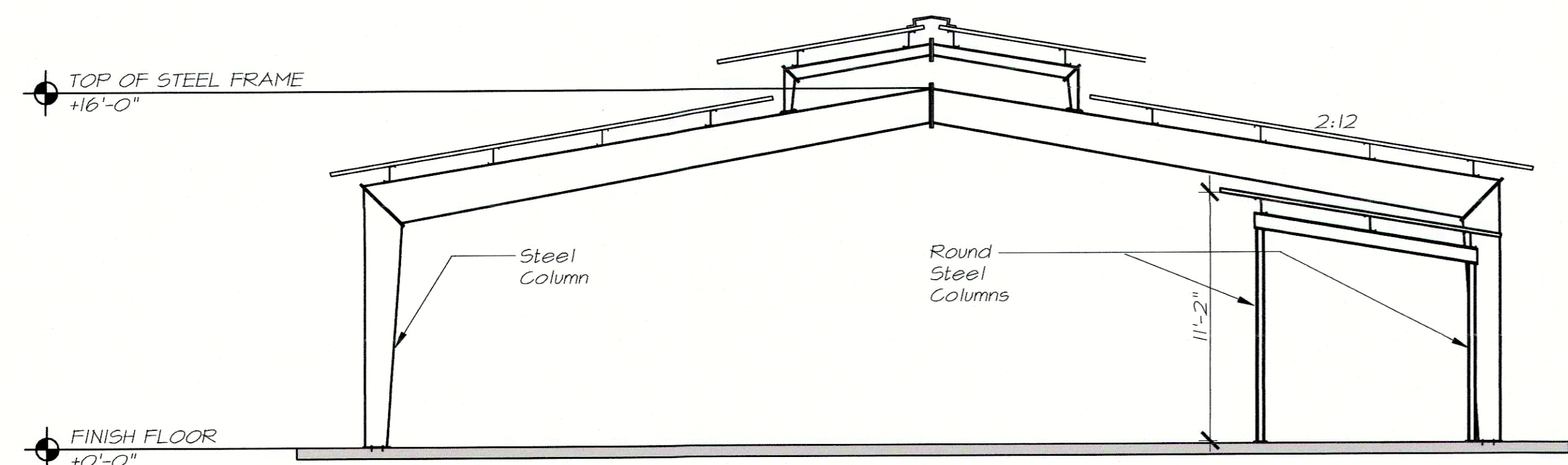
Scale: 3/16" = 1'-0"

F9 8' x 20' Modular Office - Relocated

No Scale

Supplier: ECP Environmental Compliance Products

The storage buildings are explosion proof and have been designed to provide a safe and secure storage area with secondary containment for chemicals and hazardous materials.



C1 Shade Structure Back Elevation

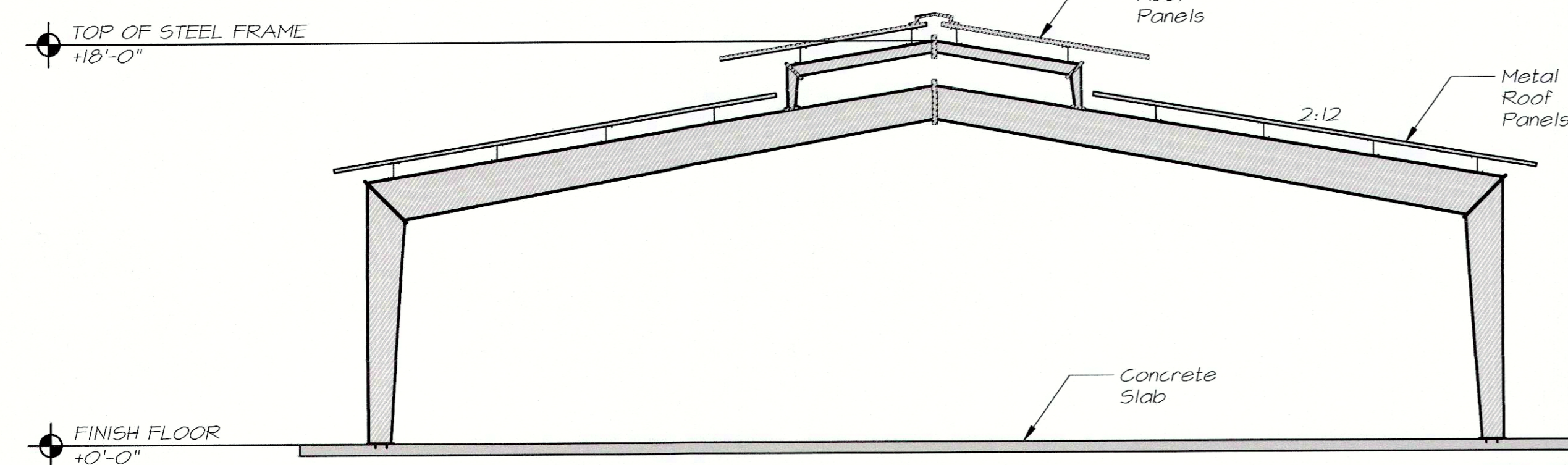
Scale: 3/16" = 1'-0"

C9 Hazardous Materials Storage Container - Relocated

No Scale

Supplier: CXT Incorporated

OZARK 1 is a single stall unisex restroom that meets ADA and Title 24 status of the State of California.



A1 Shade Structure Section

Scale: 3/16" = 1'-0"

A9 Pre-Manufactured Concrete Washroom - Relocated

No Scale



Project:

Environmental Compliance Center
 Project Address: 310 S. West Avenue Disposal Site
 APN: 458-060-26T
 Issue Date:
 Project No. T90203
 File Path: G:\Capital \ Projects \ Building Numbers \ American Ave Landfill \ T90203 Environmental Compliance Center\ 00 2018 ECC

Sheet Content:

Elevations

Fresno County Department of Public Works and Planning
 Capital Projects
 2220 Tulare Street, 8th Floor
 Fresno, California 93721



Sheet No.

A-1.01