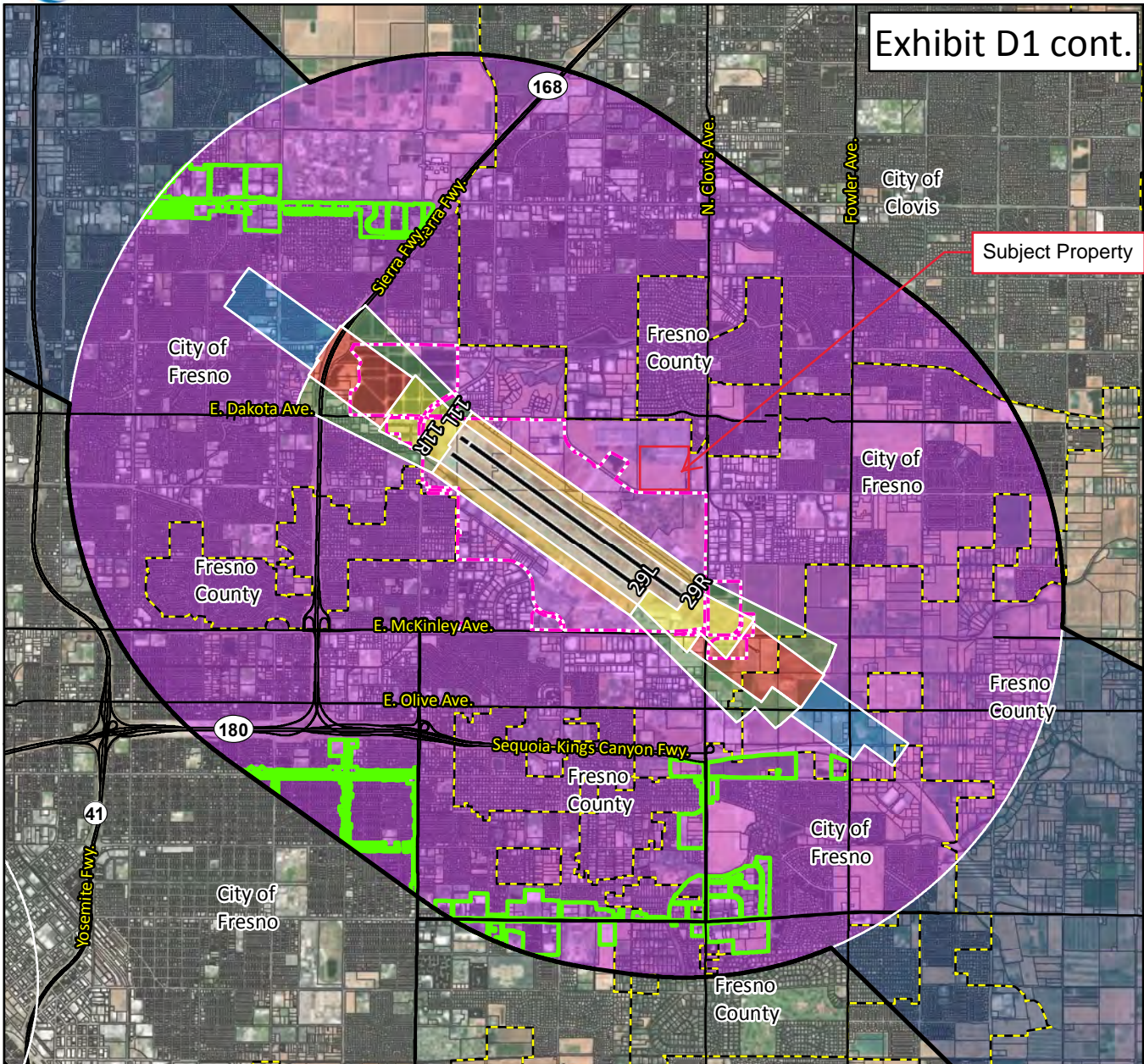




Exhibit D1 cont.

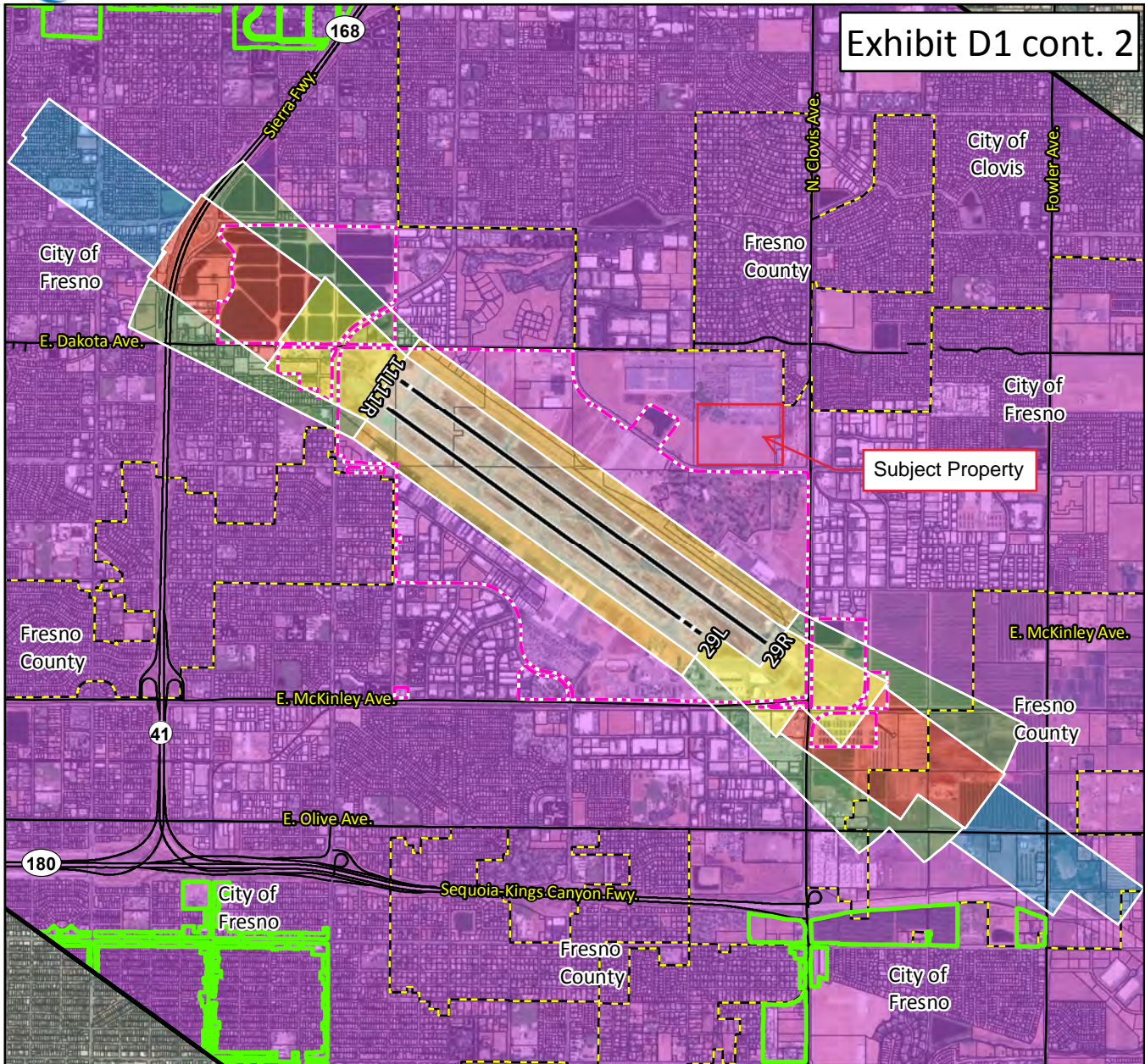


<b>LEGEND</b>		<b>Safety Zones<sup>4</sup></b>		
	Existing Runway <sup>1</sup>		1. Runway Protection Zone	
	Ultimate Runway <sup>1</sup>		2. Inner Approach/Departure Zone	
	Airport Property <sup>1</sup>		3. Inner Turning Zone	
	Parcel Boundary		4. Outer Approach/Departure Zone	
	Municipal Boundary		5. Sideline Zone	
	Streets		6. Traffic Pattern Zone	
	Airport Influence Area (AIA) <sup>2</sup>		7. Precision Approach Zone	
	Urban <sup>3</sup>			

<sup>1</sup>FresnoYosemite Intl. Airport Layout Plan (2013)  
<sup>2</sup>AIA drawn from Part 77 Conical and Outer-Transitional surfaces. See 14 CFR, Subchapter E, Part 77, §77.25.  
<sup>3</sup>City of Fresno, 2018.  
<sup>4</sup>Figure 3B, California Airport Land Use Planning Handbook (2011), and Coffman Associates Analysis. Sources: Fresno County Parcels, Fresno County Streets, ESRI Basemap Imagery (2016).



Exhibit D1 cont. 2



<b>LEGEND</b>		<b>Safety Zones<sup>4</sup></b>		N 0                      3,500                      7,000 1" = 3,500'
<ul style="list-style-type: none"> <li> Existing Runway<sup>1</sup></li> <li> Ultimate Runway<sup>1</sup></li> <li> Airport Property<sup>1</sup></li> <li> Parcel Boundary</li> <li> Municipal Boundary</li> <li> Streets</li> <li> Airport Influence Area (AIA)<sup>2</sup></li> <li> Urban<sup>3</sup></li> </ul>	<ul style="list-style-type: none"> <li> 1. Runway Protection Zone</li> <li> 2. Inner Approach/Departure Zone</li> <li> 3. Inner Turning Zone</li> <li> 4. Outer Approach/Departure Zone</li> <li> 5. Sideline Zone</li> <li> 6. Traffic Pattern Zone</li> </ul>	<p><sup>1</sup>Fresno Yosemite Intl. Airport Layout Plan (2013)</p> <p><sup>2</sup>AIA drawn from Part 77 Conical and Outer-Transitional surfaces. See 14 CFR, Subchapter E, Part 77, §77.25.</p> <p><sup>3</sup>City of Fresno, 2018.</p> <p><sup>4</sup>Figure 3B, California Airport Land Use Planning Handbook (2011), and Coffman Associates Analysis. Sources: Fresno County Parcels, Fresno County Streets, ESRI Basemap Imagery (2016).</p>		