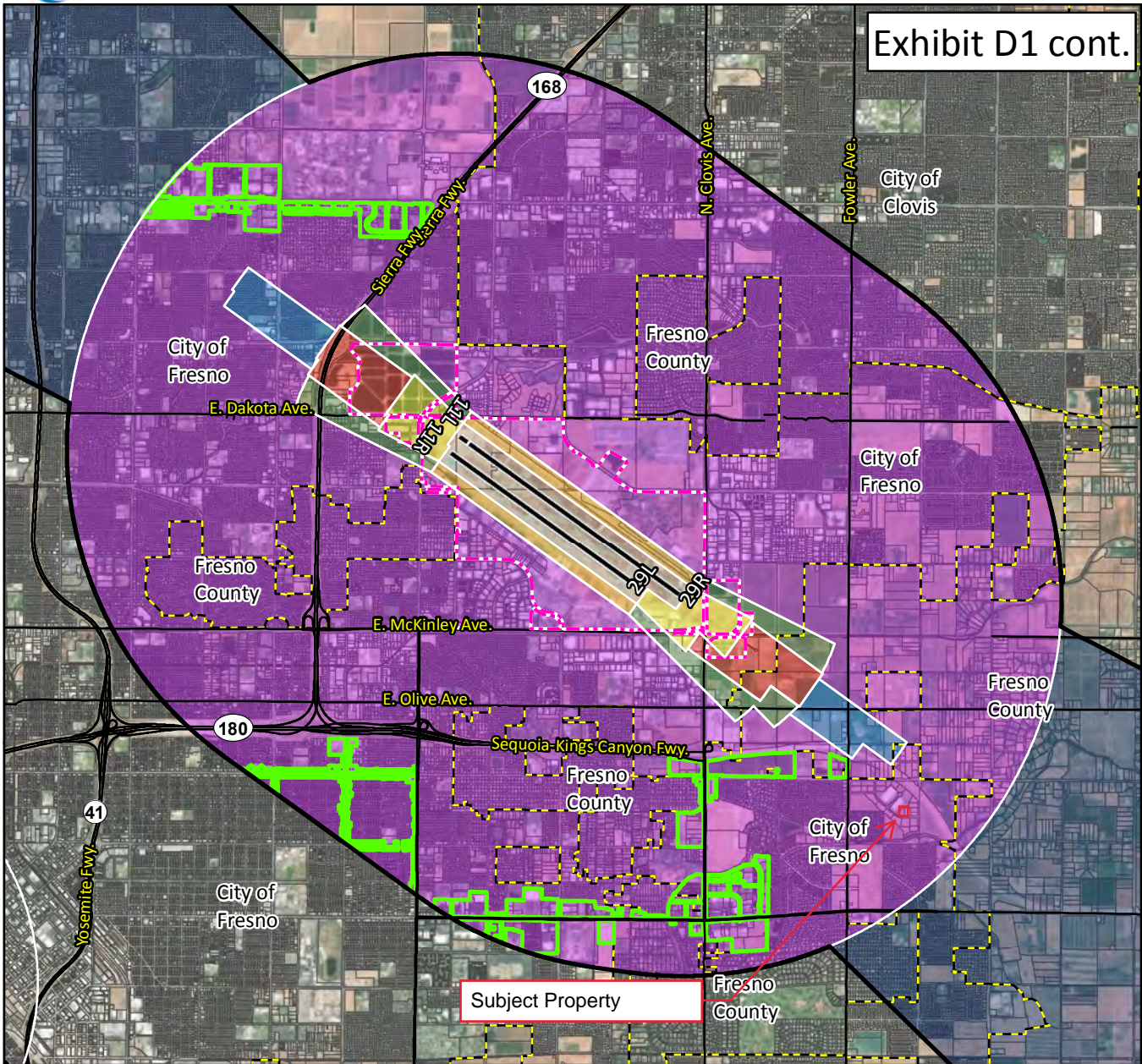




Exhibit D1 cont.

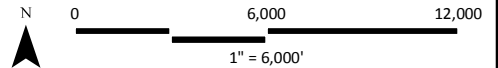


LEGEND

- Existing Runway¹
- Ultimate Runway¹
- Airport Property¹
- Parcel Boundary
- Municipal Boundary
- Streets
- Airport Influence Area (AIA)²
- Urban³

Safety Zones⁴

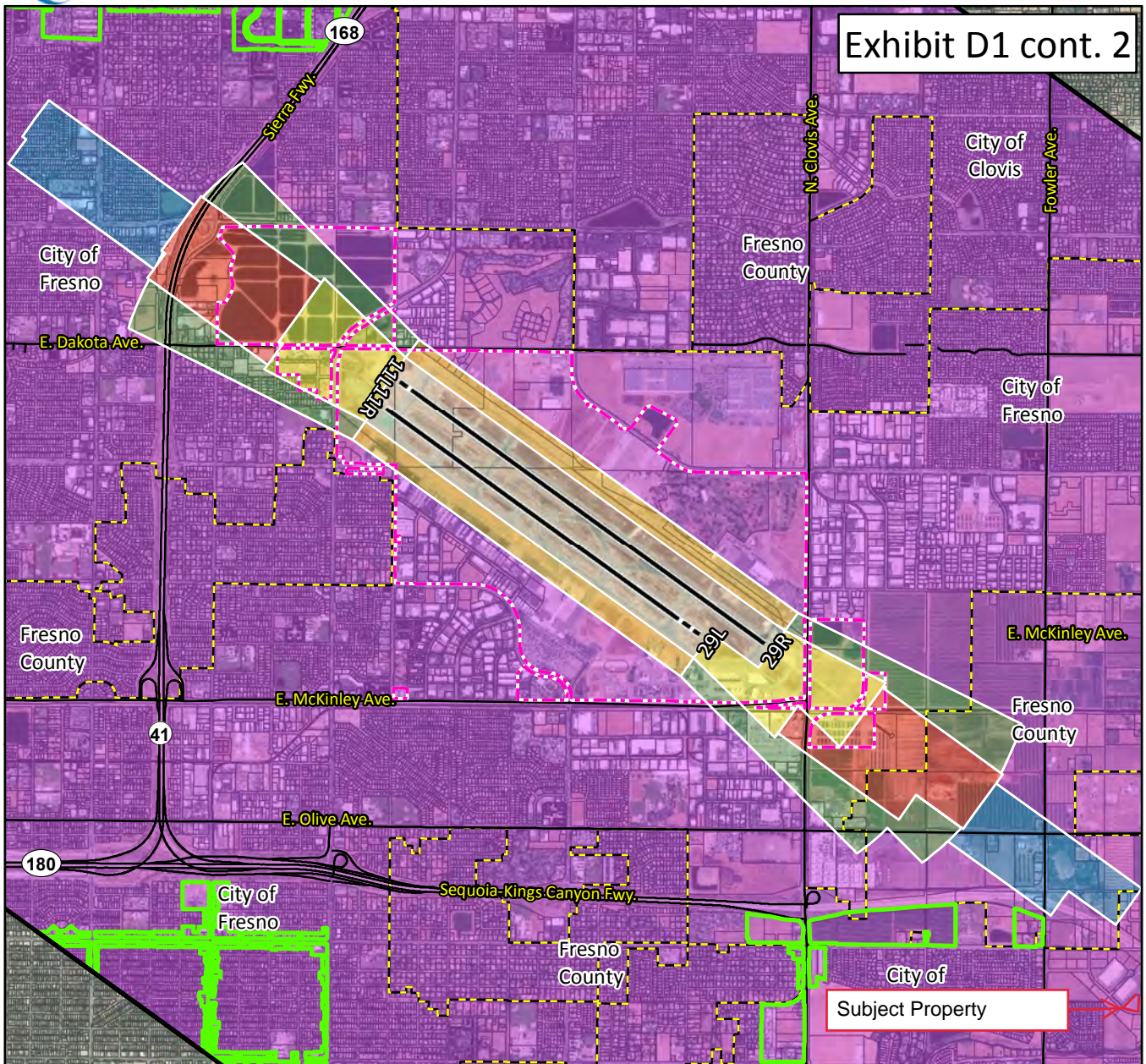
- 1. Runway Protection Zone
- 2. Inner Approach/Departure Zone
- 3. Inner Turning Zone
- 4. Outer Approach/Departure Zone
- 5. Sideline Zone
- 6. Traffic Pattern Zone
- 7. Precision Approach Zone



¹FresnoYosemite Intl. Airport Layout Plan (2013)
²AIA drawn from Part 77 Conical and Outer-Transitional surfaces. See 14 CFR, Subchapter E, Part 77, §77.25.
³City of Fresno, 2018.
⁴Figure 3B, California Airport Land Use Planning Handbook (2011), and Coffman Associates Analysis. Sources: Fresno County Parcels, Fresno County Streets, ESRI Basemap Imagery (2016).



Exhibit D1 cont. 2



LEGEND		Safety Zones⁴		
	Existing Runway ¹		1. Runway Protection Zone	
	Ultimate Runway ¹		2. Inner Approach/Departure Zone	
	Airport Property ¹		3. Inner Turning Zone	
	Parcel Boundary		4. Outer Approach/Departure Zone	
	Municipal Boundary		5. Sideline Zone	
	Streets		6. Traffic Pattern Zone	
	Airport Influence Area (AIA) ²			
	Urban ³			

¹Fresno Yosemite Intl. Airport Layout Plan (2013)
²AIA drawn from Part 77 Conical and Outer-Transitional surfaces. See 14 CFR, Subchapter E, Part 77, §77.25.
³City of Fresno, 2018.
⁴Figure 3B, California Airport Land Use Planning Handbook (2011), and Coffman Associates Analysis. Sources: Fresno County Parcels, Fresno County Streets, ESRI Basemap Imagery (2016).