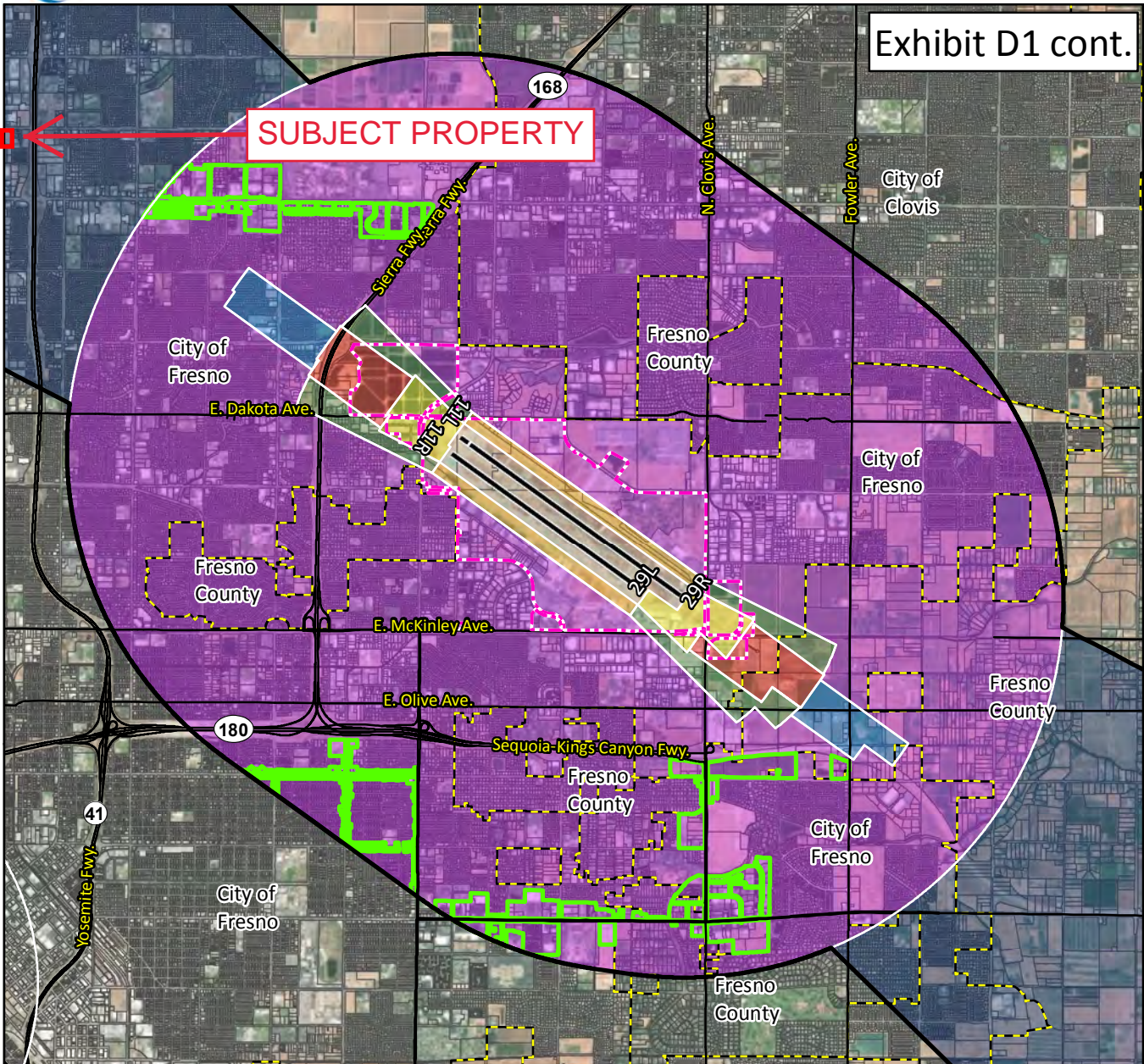




Exhibit D1 cont.

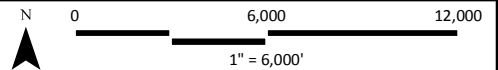


LEGEND

- Existing Runway<sup>1</sup>
- Ultimate Runway<sup>1</sup>
- Airport Property<sup>1</sup>
- Parcel Boundary
- Municipal Boundary
- Streets
- Airport Influence Area (AIA)<sup>2</sup>
- Urban<sup>3</sup>

Safety Zones<sup>4</sup>

- 1. Runway Protection Zone
- 2. Inner Approach/Departure Zone
- 3. Inner Turning Zone
- 4. Outer Approach/Departure Zone
- 5. Sideline Zone
- 6. Traffic Pattern Zone
- 7. Precision Approach Zone



<sup>1</sup>FresnoYosemite Intl. Airport Layout Plan (2013)  
<sup>2</sup>AIA drawn from Part 77 Conical and Outer-Transitional surfaces. See 14 CFR, Subchapter E, Part 77, §77.25.  
<sup>3</sup>City of Fresno, 2018.  
<sup>4</sup>Figure 3B, California Airport Land Use Planning Handbook (2011), and Coffman Associates Analysis. Sources: Fresno County Parcels, Fresno County Streets, ESRI Basemap Imagery (2016).