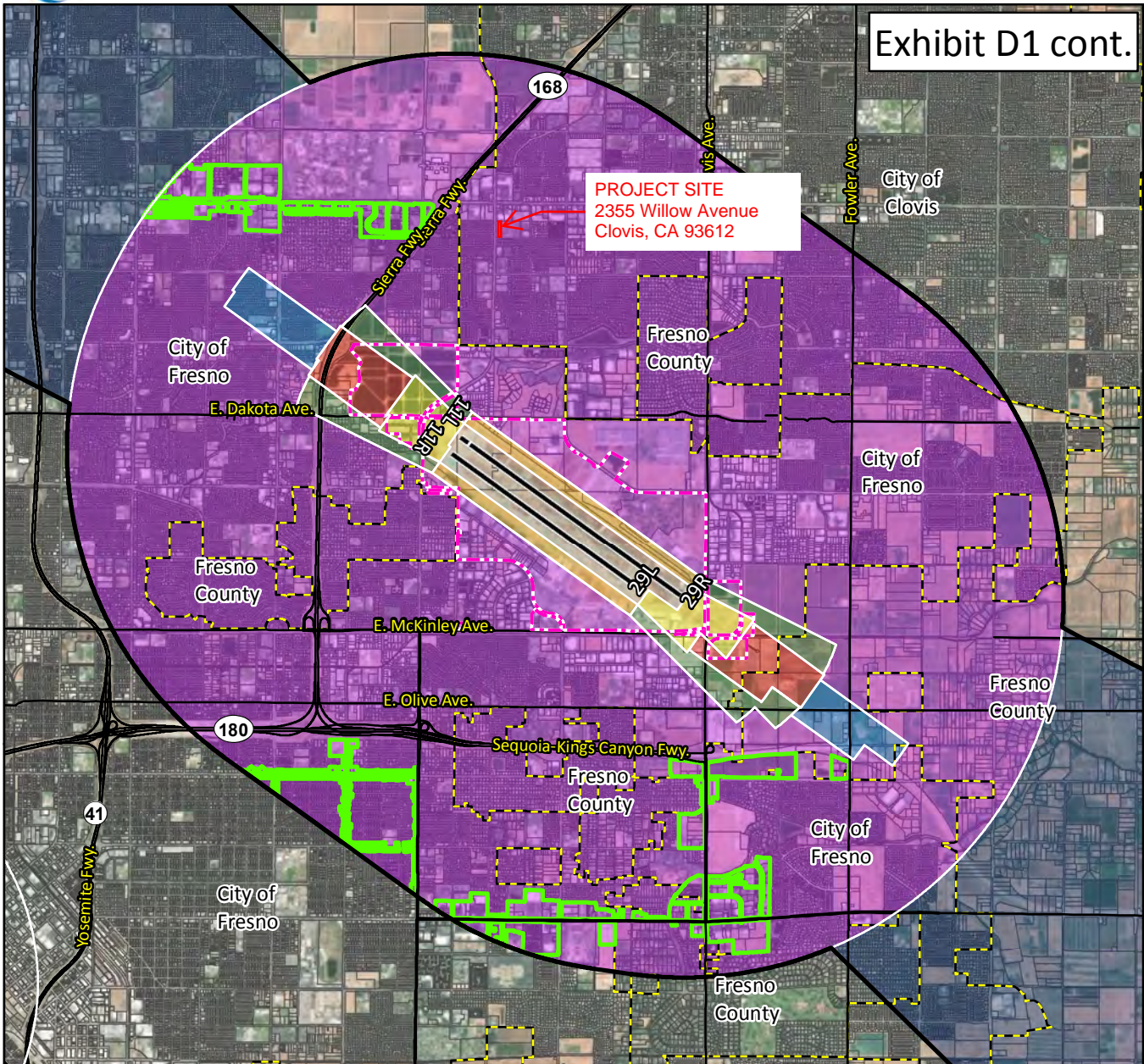




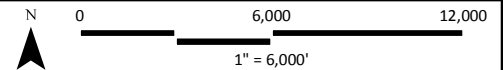
Exhibit D1 cont.



PROJECT SITE
 2355 Willow Avenue
 Clovis, CA 93612

- LEGEND**
- Existing Runway¹
 - - - Ultimate Runway¹
 - Airport Property¹
 - ▭ Parcel Boundary
 - - - Municipal Boundary
 - Streets
 - ▭ Airport Influence Area (AIA)²
 - Urban³

- Safety Zones⁴**
- 1. Runway Protection Zone
 - 2. Inner Approach/Departure Zone
 - 3. Inner Turning Zone
 - 4. Outer Approach/Departure Zone
 - 5. Sideline Zone
 - 6. Traffic Pattern Zone
 - 7. Precision Approach Zone



¹FresnoYosemite Intl. Airport Layout Plan (2013)
²AIA drawn from Part 77 Conical and Outer-Transitional surfaces. See 14 CFR, Subchapter E, Part 77, §77.25.
³City of Fresno, 2018.
⁴Figure 3B, California Airport Land Use Planning Handbook (2011), and Coffman Associates Analysis. Sources: Fresno County Parcels, Fresno County Streets, ESRI Basemap Imagery (2016).