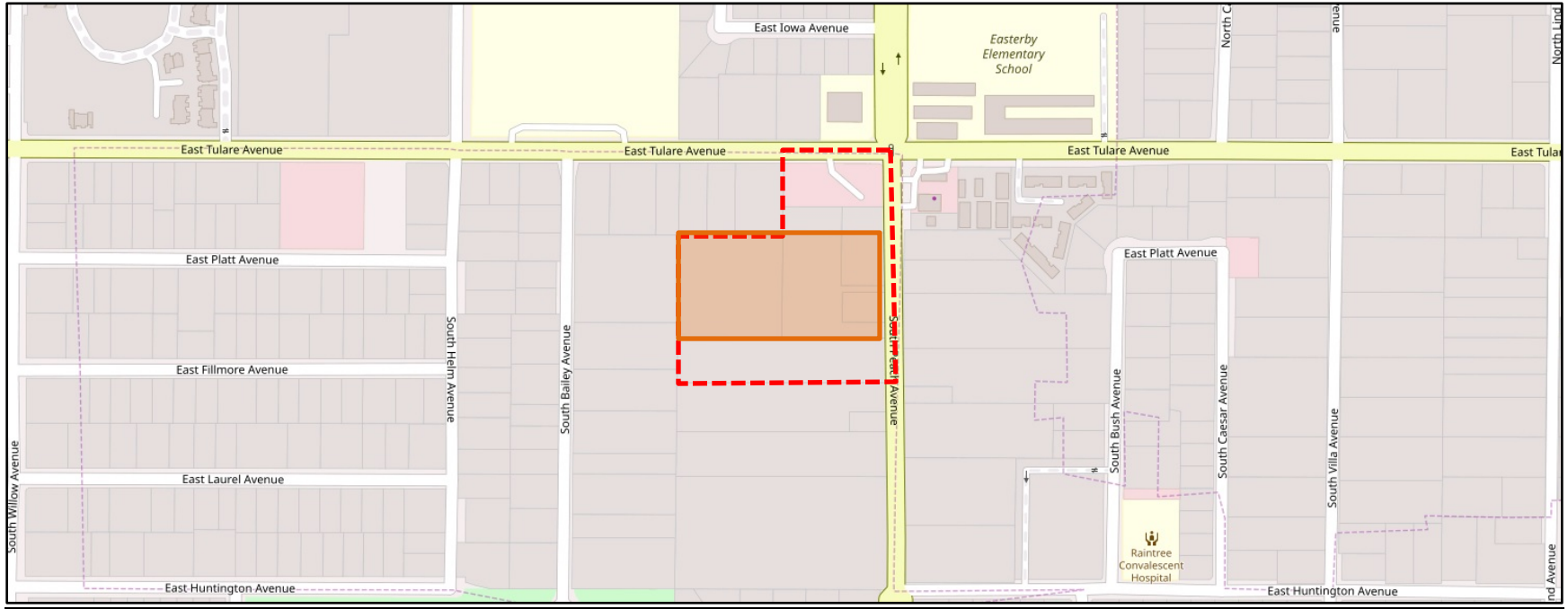


EXHIBIT A – Project Location





-  Annexation Area
-  Project Area

EXHIBIT B – Aerial Map



Annexation Area



Project Area

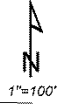
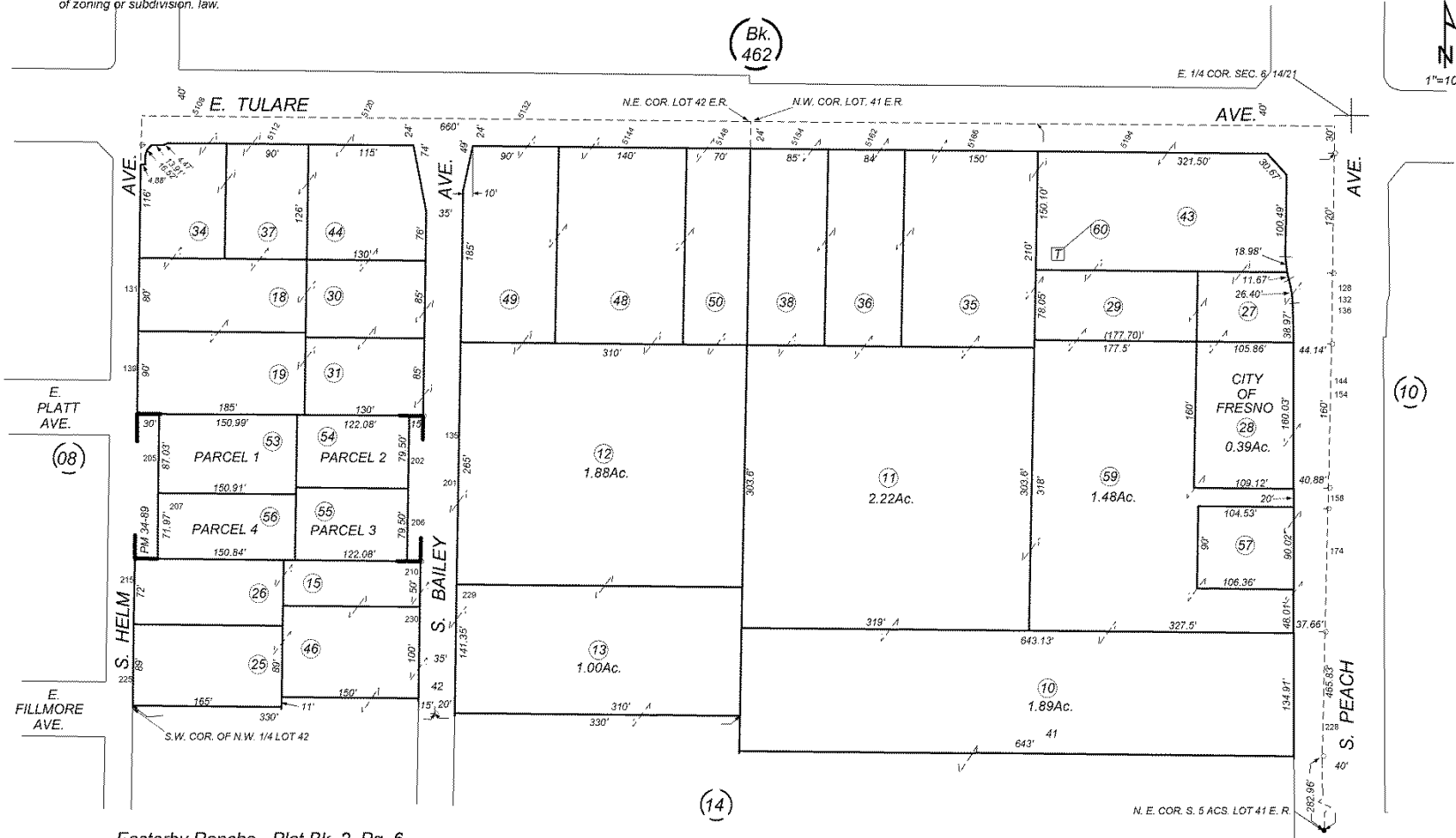
EXHIBIT C – APN Map

-NOTE-
 This map is for Assessment purposes only.
 It is not to be construed as portraying legal
 ownership or divisions of land for purposes
 of zoning or subdivision law.

SUBDIVIDED LAND IN POR. SEC. 6, T. 14 S., R. 21 E., M. D. B. & M.

Tax Rate Area
 98-027

463-09



Easterby Rancho - Plat Bk. 2, Pg. 6
 Parcel Map No. 4313, Bk. 34, Pg. 89

Assessor's Map Bk. 463 - Pg. 09
 County of Fresno, Calif.

Note - Assessor's Block Numbers Shown in Ellipses
 Assessor's Parcel Numbers Shown in Circles

EXHIBIT D – CNEL Map

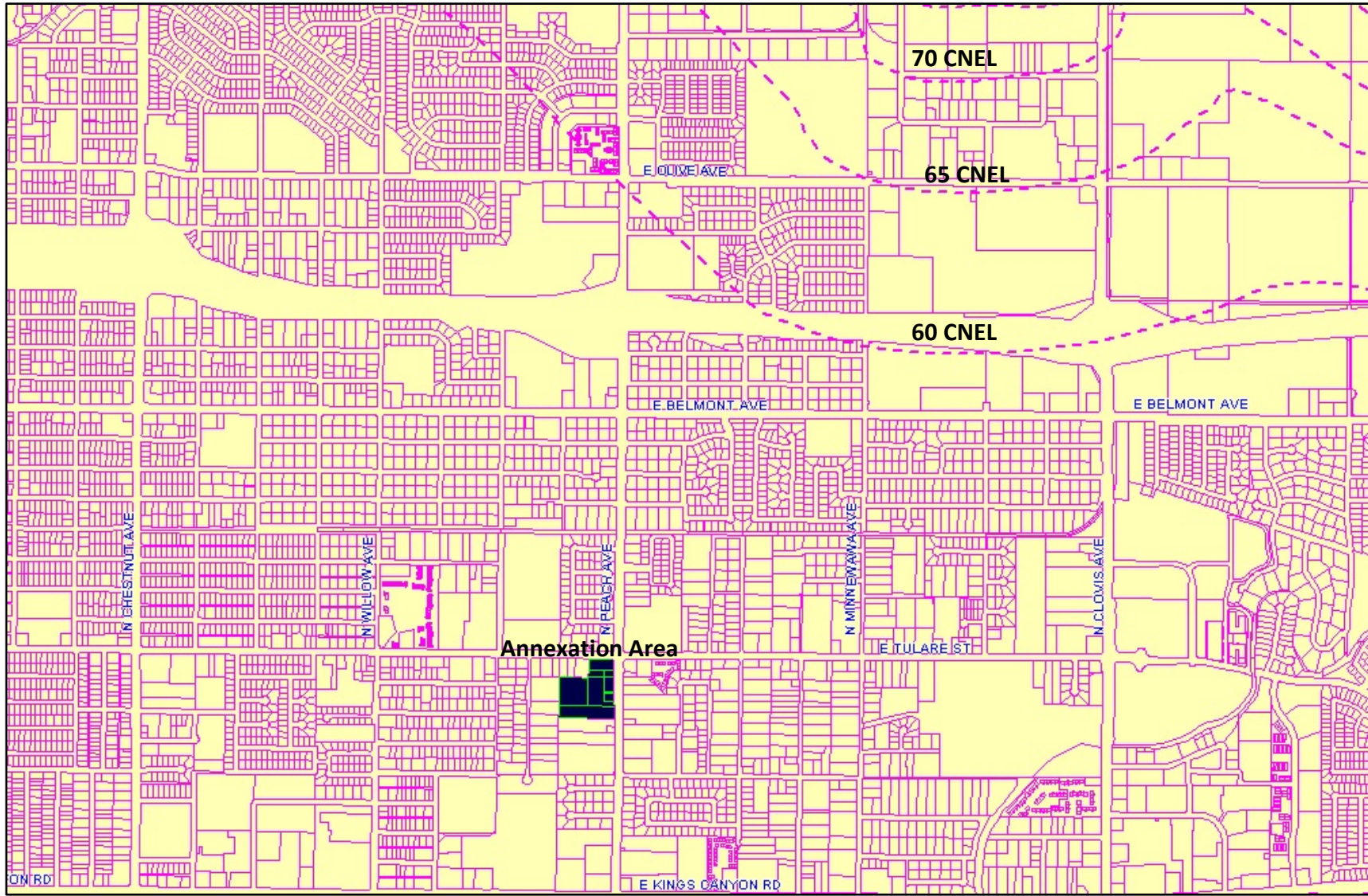
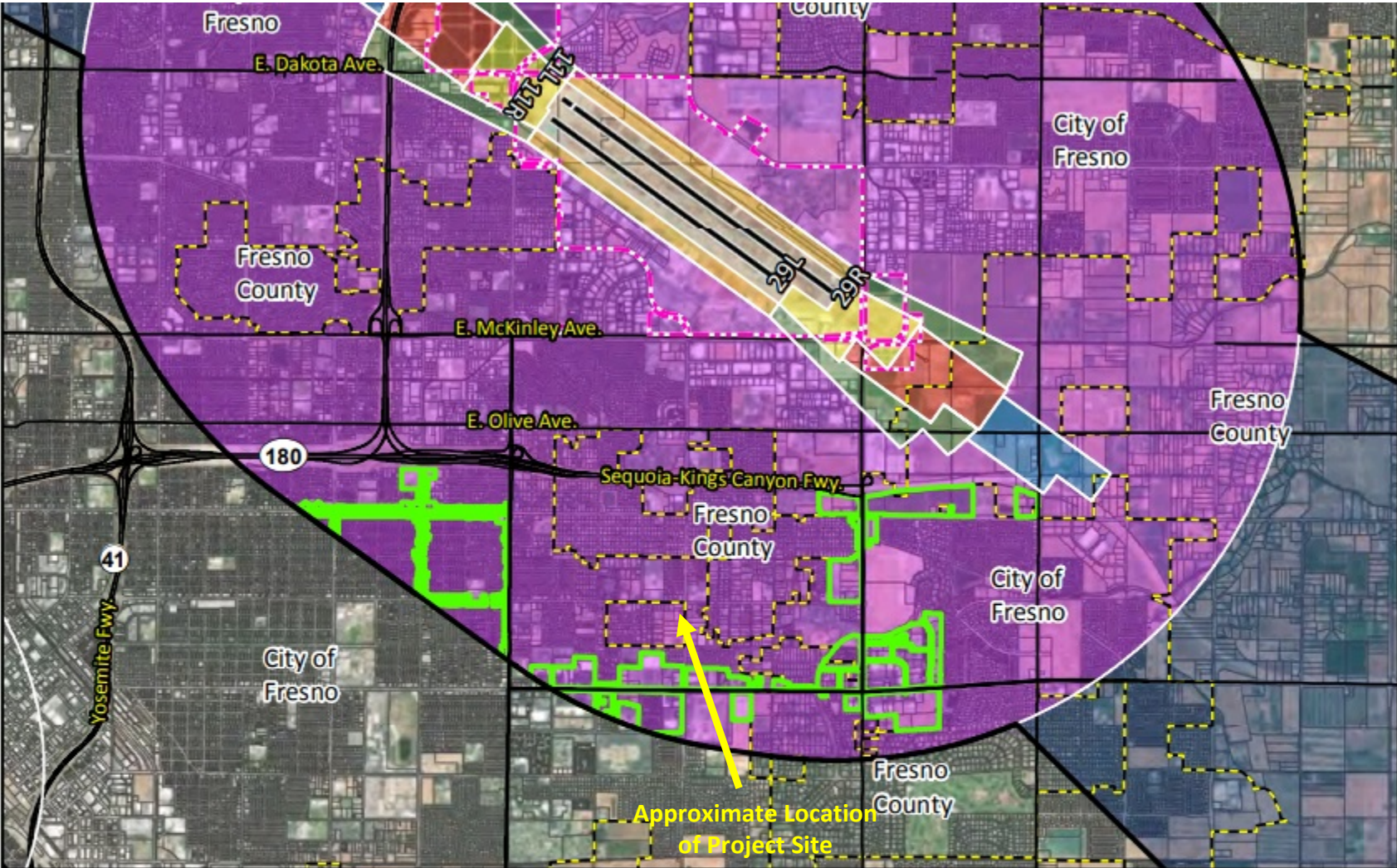


Exhibit E – Safety Zone Map



LEGEND		Safety Zones⁴	<p>N</p> <p>0 6,000 12,000</p> <p>1" = 6,000'</p>
<ul style="list-style-type: none"> Existing Runway¹ Ultimate Runway¹ Airport Property¹ Parcel Boundary Municipal Boundary Streets Airport Influence Area (AIA)² Urban³ 	<ul style="list-style-type: none"> 1. Runway Protection Zone 2. Inner Approach/Departure Zone 3. Inner Turning Zone 4. Outer Approach/Departure Zone 5. Sideline Zone 6. Traffic Pattern Zone 7. Precision Approach Zone 	<p>¹FresnoYosemite Intl. Airport Layout Plan (2013)</p> <p>²AIA drawn from Part 77 Conical and Outer-Transitional surfaces. See 14 CFR, Subchapter E, Part 77, §77.25.</p> <p>³City of Fresno, 2018.</p> <p>⁴Figure 3B, California Airport Land Use Planning Handbook (2011), and Coffman Associates Analysis. Sources: Fresno County Parcels, Fresno County Streets, ESRI Basemap Imagery (2016).</p>	