

# Proposed Heavy Maintenance Facility Site

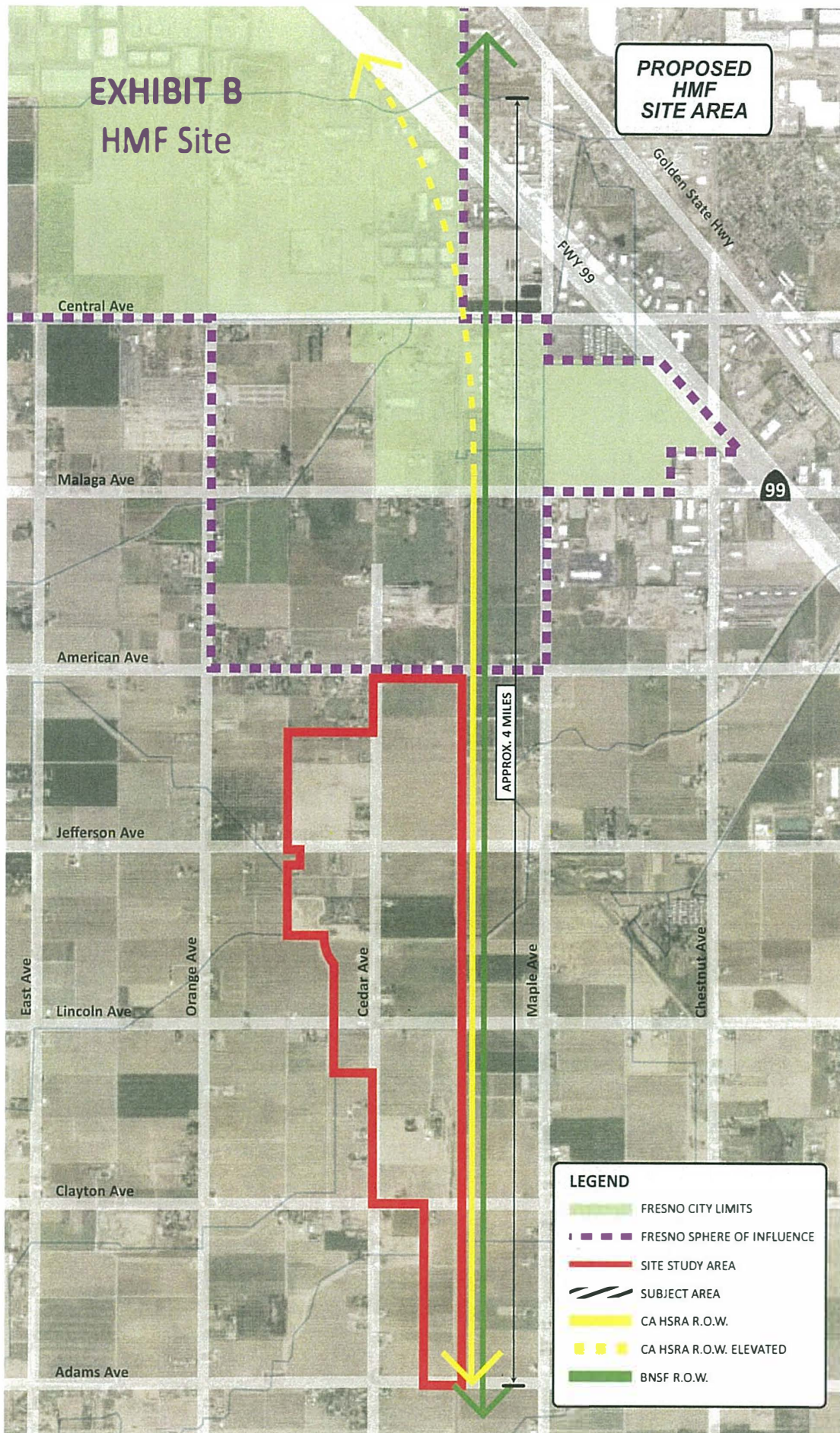
Fresno County

## EXHIBIT A HSR HMF Vicinity Map

Site Location

# EXHIBIT B HMF Site

PROPOSED  
HMF  
SITE AREA



## LEGEND

- FRESNO CITY LIMITS
- FRESNO SPHERE OF INFLUENCE
- SITE STUDY AREA
- SUBJECT AREA
- CA HSRA R.O.W.
- CA HSRA R.O.W. ELEVATED
- BNSF R.O.W.



# EXHIBIT C

AMERICAN

JEFFERSON

LINCOLN

CLAYTON

ORANGE

CEDAR

MAPLE

33404135  
11.27 AC.

33404093S  
18.94 AC.

33404129  
19.91 AC.

33433039  
19.00 AC.

33433059  
9.46 AC.

33433017  
1.00 AC.

33433016  
1.00 AC.

33433040  
0.86 AC.

33425028  
16.00 AC.

33425065  
1.21 AC.

33425064  
13.36 AC.

Heavy Maintenance Facility  
Site Footprint

33433046S  
0.37 AC.

33433024  
16.12 AC.

33425043  
19.00 AC.

33425066  
0.92 AC.

33425021  
18.00 AC.

MORTON

**FRESNO**

**High Speed Rail Maintenance Facility**

- Parcels to be Acquired
- BNSF
- High Speed Rail Alignment
- HSR Acquired Property/ROW
- HSR Excess ROW
- Sphere Of Influence
- County Streets



Source: Esri, DigitalGlobe, GeoEye, USDA, USGS, AEX, Getmap, User Community

## **Exhibit D**

### **Comparative Analysis**

#### **Original “Fresno Works” HSR HMF Concept/ New Proposal-HSR Maintenance of Way Facility Campus**

##### **Original “Fresno Works” Heavy Maintenance Facility Concept**

- \$25.0 mil.
- Heavy Maintenance Facility
- Broad vision to position CHSR system and HMF as the global showcase for HSR, drawing investment and commerce from around the world.
- Future epicenter of United States High Speed Rail Industry
- 2,300 jobs
- Extensive training and education infrastructure
- Funding to be used for site acquisition, infrastructure utilities and/or construction,

##### **New Proposal-High Speed Rail Maintenance of Way Facility Campus**

- \$24.5 mil. (\$500,000 previously spent on expired real estate options)
- Operational Control Center (OCC)
- Temporary trainset acceptance testing and certification facility
- Training classrooms
- Support Equipment (i.e. simulators)
- Funding to be used for site acquisition, infrastructure utilities and/or construction,



August 14, 2020

Lee Ann Eager, President /CEO - EDC  
Tony Boren, Executive Director - Fresno COG  
Mike Leonardo, Executive Director - FCTA  
Fresno Works  
906 N Street, Suite 120  
Fresno, CA 93721

Dear Ms. Eager, Mr. Boren, Mr. Leonardo:

At yesterday's Board meeting, I informed the Board of our plans to select the Fresno Works site to build a Maintenance of Way facility campus consistent with the Fresno-Bakersfield environmental document.

The Fresno Works site is the key location for the systems first Maintenance of Way facility which will include the Operational Control Center (OCC), a temporary trainset acceptance testing and certification facility, training classrooms and support equipment, such as simulators. Clearly, this goes a long way to support the long-term vision of creating a High-Speed Rail campus that will provide significant opportunities for the region. It is also important to note that this site will initially test and commission the first train sets that will operate on this system.

Based on prior discussions, the Authority looks forward to partnering with Fresno Works and continuing negotiations on how best to most efficiently acquire the land and utilize the committed \$25,000,000 for the site to develop these facilities.

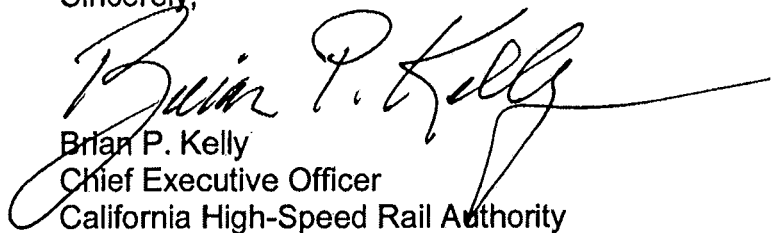
Further, we understand that the County of Fresno, City of Fresno, Fresno COG and Fresno County Transportation Authority aim to accelerate infrastructure investments in the project area to allow for job generating development. The Authority is committed to support this endeavor by providing you with any high-speed rail-related information and/or documentation you may need to achieve this acceleration.

We look forward to working with you and appreciate your continued support to help us build a High-Speed Rail System in the Central Valley.

Ms. Eager, Mr. Boren, Mr. Leonardo  
August 14, 2020  
Page 2

Should you have any questions, please do not hesitate to contact me via email or phone call.

Sincerely,

A handwritten signature in black ink, reading "Brian P. Kelly". The signature is fluid and cursive, with a long horizontal stroke extending to the right.

Brian P. Kelly  
Chief Executive Officer  
California High-Speed Rail Authority