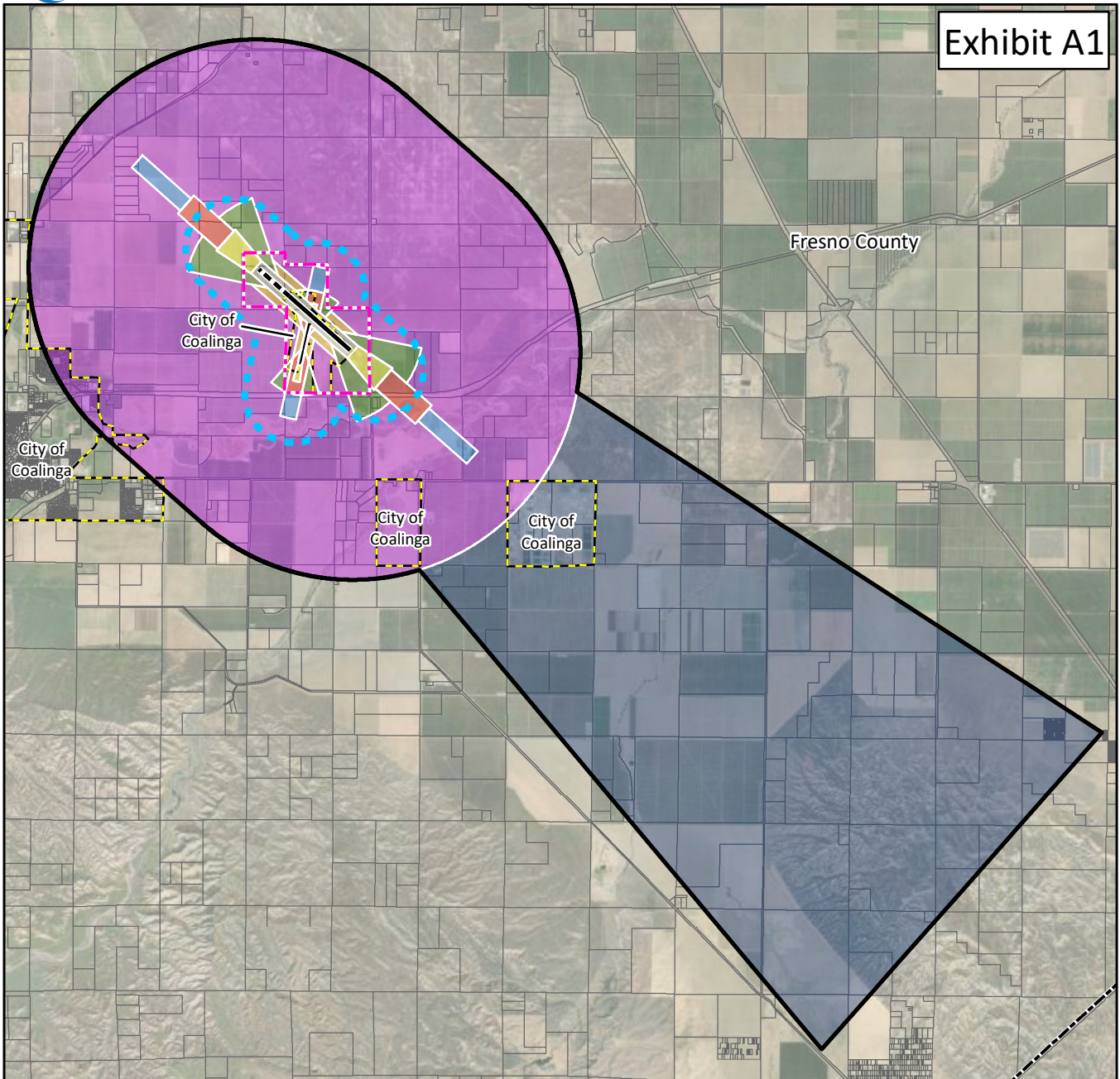




Exhibit A1

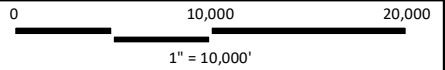


**LEGEND**

- Airport Property<sup>1</sup>
- Parcel Boundary
- Municipal Boundary
- Airport Influence Area (AIA)<sup>2</sup>
- Vulnerable Occupants Review Area (See Section 3.2.2 & Table 3A)

**Safety Zones<sup>3</sup>**

- 1. Runway Protection Zone
- 2. Inner Approach/Departure Zone
- 3. Inner Turning Zone
- 4. Outer Approach/Departure Zone
- 5. Sideline Zone
- 6. Traffic Pattern Zone
- 7. Precision Approach Zone



<sup>1</sup>Coalinga Airport Layout Plan (2007).

<sup>2</sup>AIA drawn from Part 77 Conical and Outer Transitional surfaces (see 14 CFR, Subchapter E, Part 77, §77.25.).

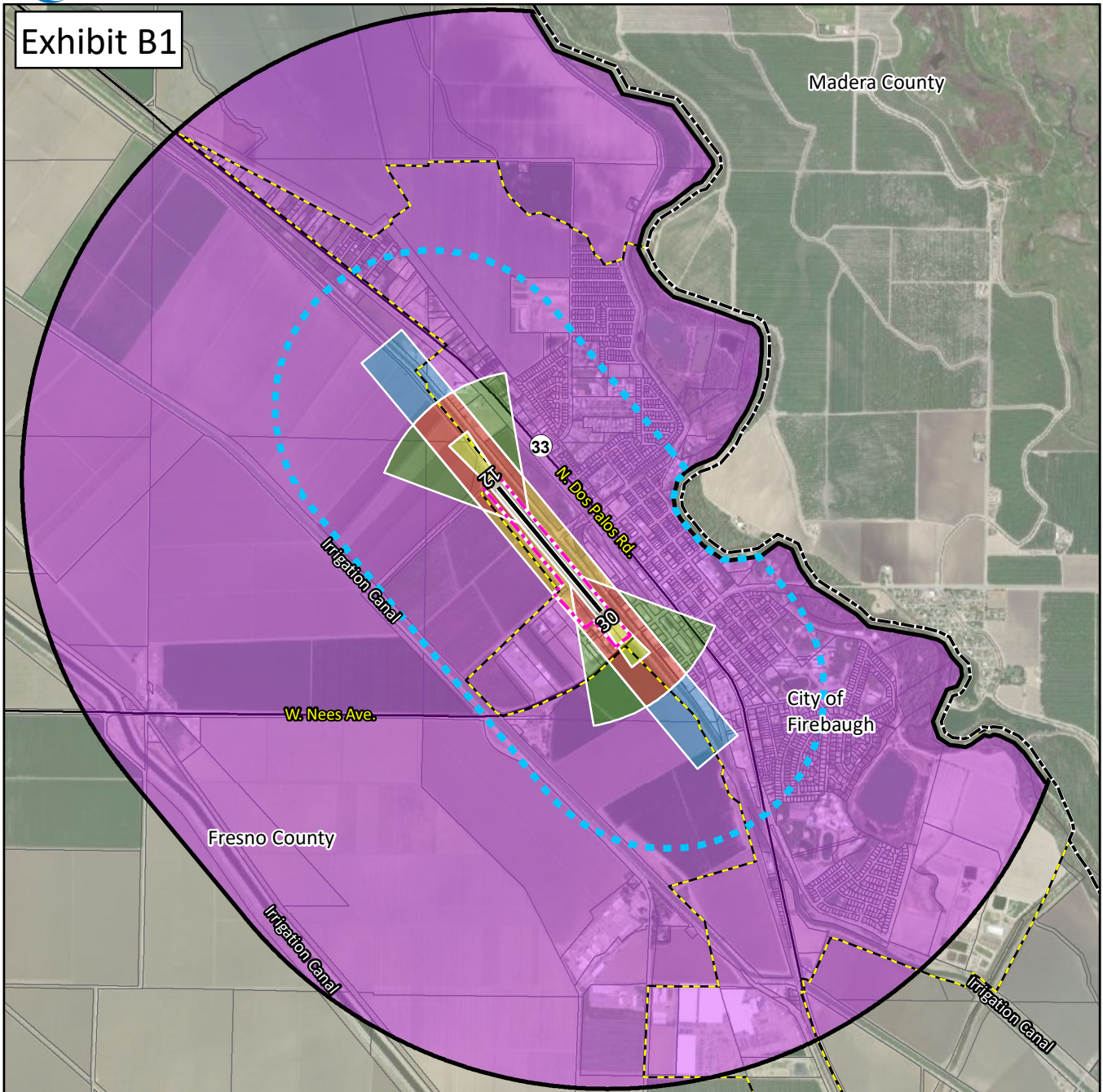
<sup>3</sup>Figure 3A, California Airport Land Use Planning Handbook (2011), and Coffman Associates analysis.

Sources: Fresno County Parcels, Fresno County Streets, ESRI Basemap Imagery (2019).





Exhibit B1



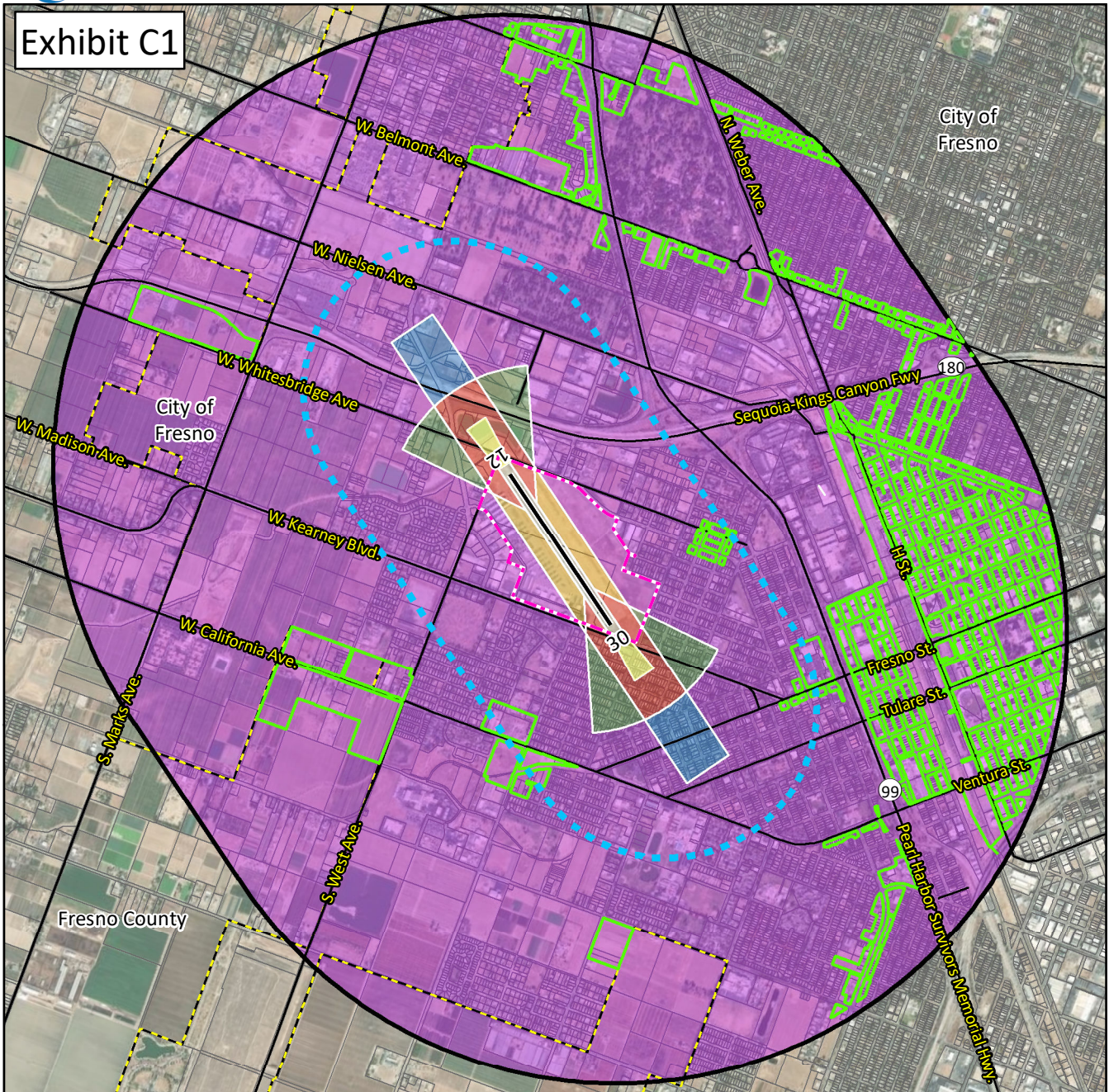
<b>LEGEND</b>		<b>Safety Zones<sup>3</sup></b>	
	Runway <sup>1</sup>		
	Airport Boundary <sup>1</sup>		2. Inner Approach/Departure Zone
	Parcel Boundary		3. Inner Turning Zone
	Municipal Boundary		4. Outer Approach/Departure Zone
	County Boundary		5. Sideline Zone
	Streets		6. Traffic Pattern Zone
	Airport Influence Area (AIA) <sup>2</sup>		
	Vulnerable Occupants Review Area (See Section 3.2.2 & Table 3A)		

<sup>1</sup>Firebaugh Airport Layout Plan (2013).  
<sup>2</sup>AIA drawn from Part 77 Conical Surface. See 14 CFR, Subchapter E, Part 77, §77.25.  
<sup>3</sup>Figure 3A, California Airport Land Use Planning Handbook (2011), and Coffman Associates Analysis.  
 Sources: Fresno County Parcels, Fresno County Streets, ESRI Basemap Imagery (2020).





Exhibit C1

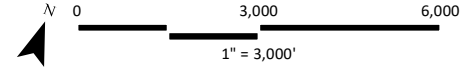


LEGEND

- Existing Runway
- Airport Property
- Parcel
- Municipal
- Streets
- Airport Influence Area (AIA)
- Vulnerable Occupants Review Area (See Section 3.2.2 & Table 3A)
- Urban

Safety Zones

- 1. Runway Protection
- 2. Inner Approach/Departure
- 3. Inner Turning
- 4. Outer Approach/Departure
- 5. Sideline
- 6. Traffic Pattern

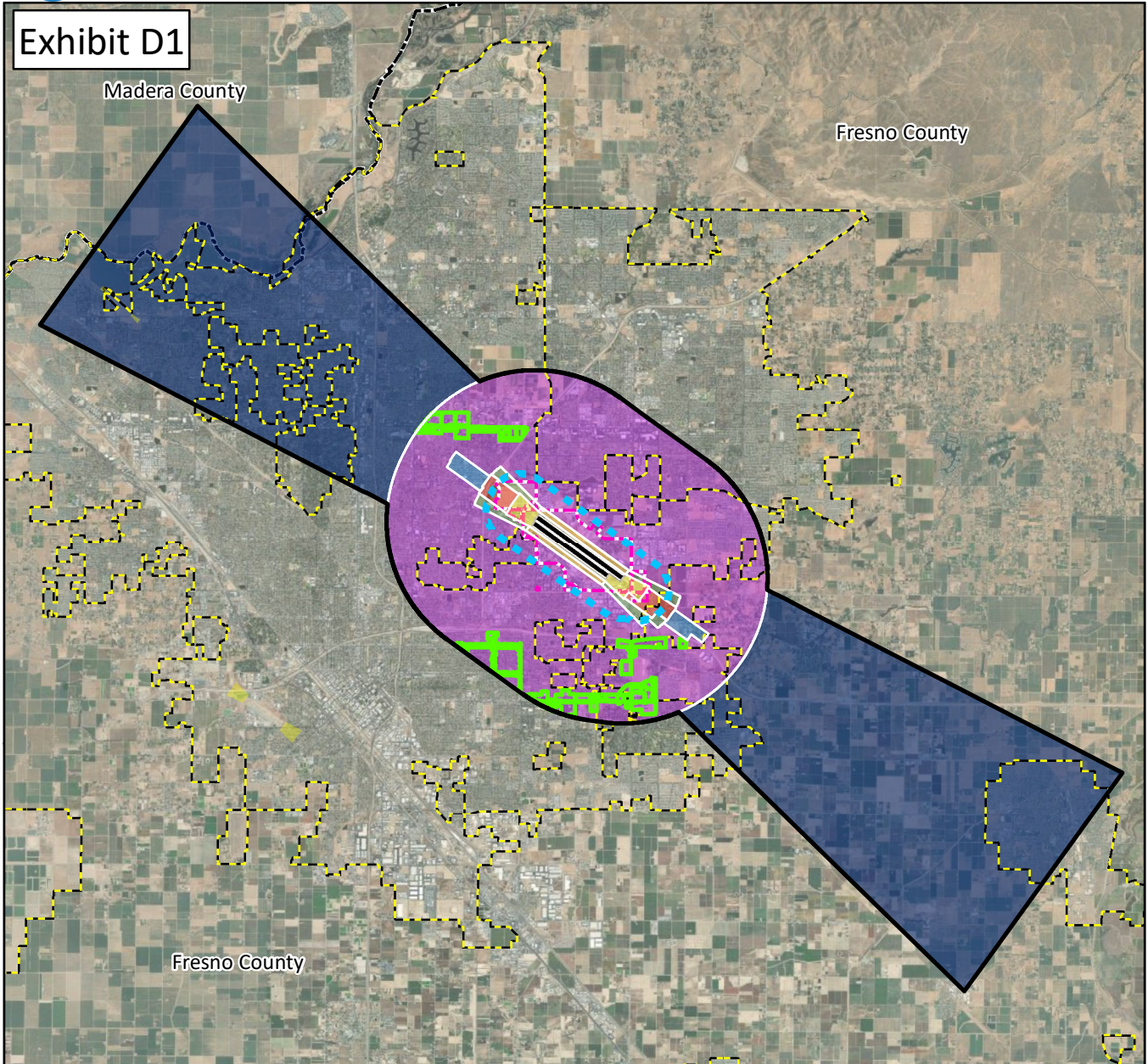


<sup>1</sup>Fresno Chandler Airport Layout Plan (June 2021).  
<sup>2</sup>AIA drawn from Part 77 Conical Surface. See 14 CFR, Subchapter E, Part 77, §77.25.  
<sup>3</sup>City of Fresno, 2018.  
<sup>4</sup>Figure 3A, California Airport Land Use Planning Handbook (2011), and Coffman Associates Analysis. Sources: Fresno County Parcels, Fresno County Streets, ESRI Basemap Imagery (2020).





# Exhibit D1

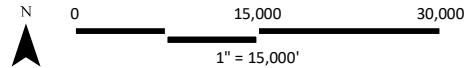


### LEGEND

- Existing Runway<sup>1</sup>
- Ultimate Runway<sup>1</sup>
- Airport Property<sup>1</sup>
- Municipal Boundary
- Airport Influence Area (AIA)<sup>2</sup>
- Urban<sup>3</sup>
- Vulnerable Occupants Review Area (See Section 3.2.2 & Table 3A)

### Safety Zones<sup>4</sup>

- 1. Runway Protection Zone
- 2. Inner Approach/Departure Zone
- 3. Inner Turning Zone
- 4. Outer Approach/Departure Zone
- 5. Sideline Zone
- 6. Traffic Pattern Zone
- 7. Precision Approach Zone



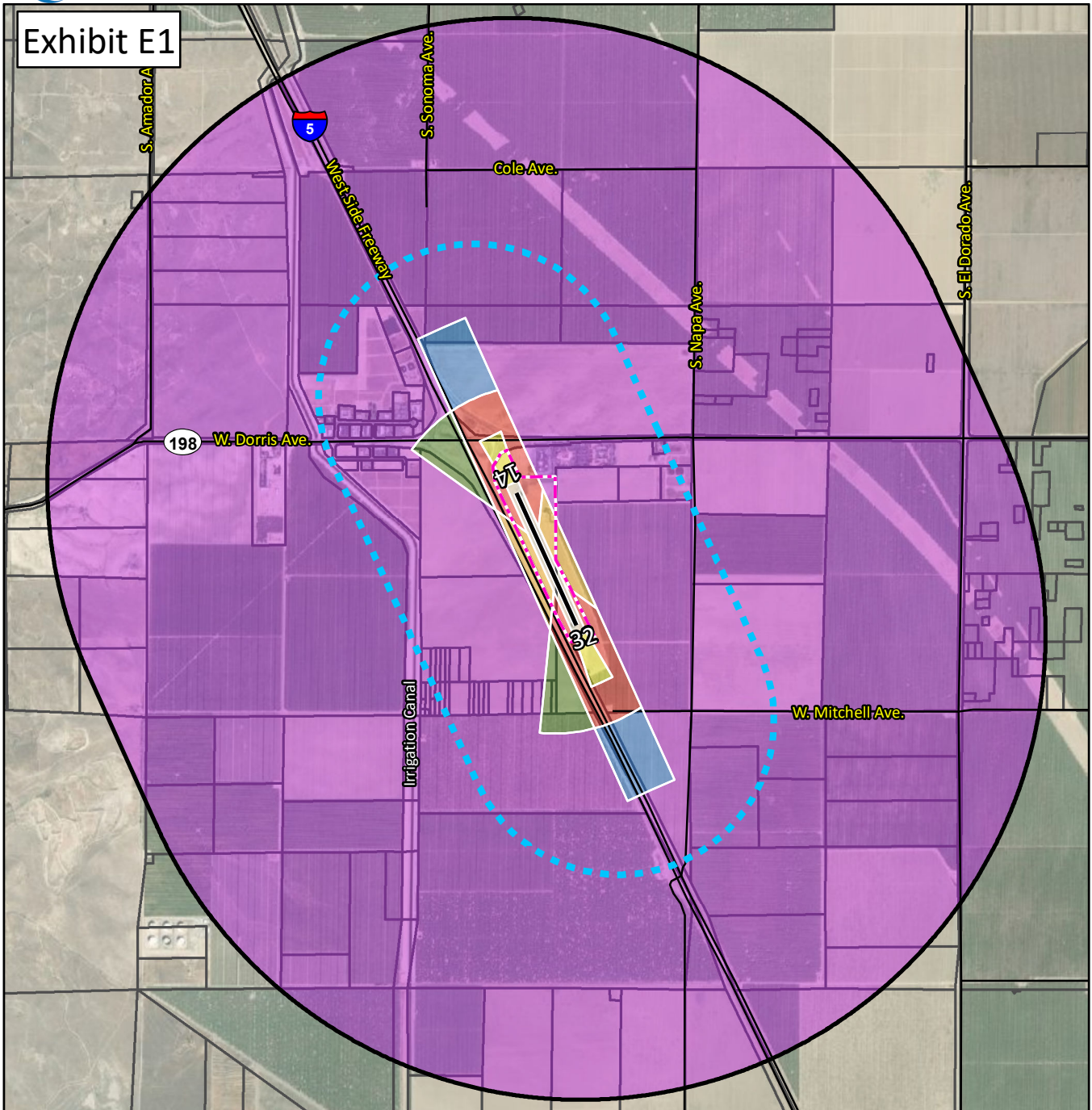
<sup>1</sup>FresnoYosemite Intl. Airport Layout Plan (2013)

<sup>2</sup>AIA drawn from Part 77 Conical and Outer-Transitional surfaces. See 14 CFR, Subchapter E, Part 77, §77.25.

<sup>3</sup>City of Fresno, 2018

<sup>4</sup>Figure 3B, California Airport Land Use Planning Handbook (2011), and Coffman Associates Analysis. Sources: Fresno County Parcels, ESRI Basemap Imagery (2020).



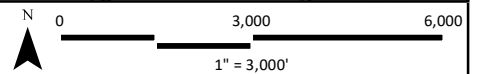


**LEGEND**

- Runway<sup>1</sup>
- Airport Property<sup>2</sup>
- Parcel Boundary
- Streets
- Airport Influence Area (AIA)<sup>3</sup>
- Vulnerable Occupants Review Area (See Section 3.2.2 & Table 3A)

**Safety Zones<sup>4</sup>**

- 1. Runway Protection Zone
- 2. Inner Approach/Departure Zone
- 3. Inner Turning Zone
- 4. Outer Approach/Departure Zone
- 5. Sideline Zone
- 6. Traffic Pattern Zone



<sup>1</sup>Runway centerline placed from ESRI Imagery (2016)

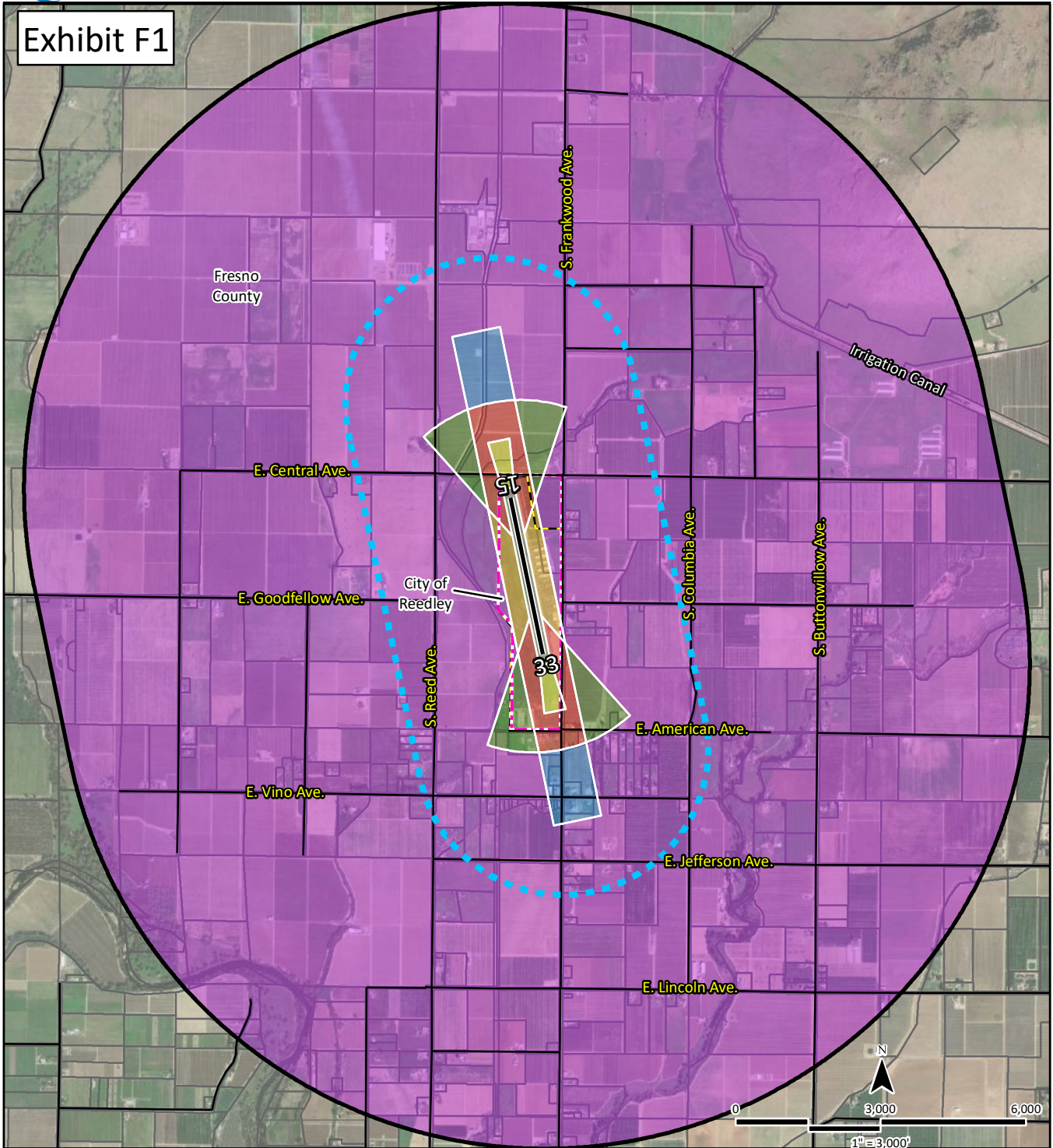
<sup>2</sup>APN: 06506072S, APN: 06506081S.

<sup>3</sup>Part 77 Conical Surface. See 14 CFR, Subchapter E, Part 77, §77.25.

<sup>4</sup>Figure 3A, California Airport Land Use Planning Handbook (2011), and Coffman Associates Analysis. Sources: Fresno County, ESRI Streets, ESRI Basemap Imagery (2019).



Exhibit F1



LEGEND

- Runway<sup>1</sup>
- Airport Property<sup>1</sup>
- Parcel Boundary
- Municipal Boundary
- Streets
- Airport Influence Area (AIA)<sup>2</sup>
- Review Area<sup>4</sup>

Safety Zones<sup>3</sup>

- 1. Runway Protection Zone
- 2. Inner Approach/Departure Zone
- 3. Inner Turning Zone
- 4. Outer Approach/Departure Zone
- 5. Sideline Zone
- 6. Traffic Pattern Zone

<sup>1</sup>Reedley Municipal Airport Layout Plan (2013).

<sup>2</sup>Part 77 Conical Surface. See 14 CFR, Subchapter E, Part 77, §77.25.

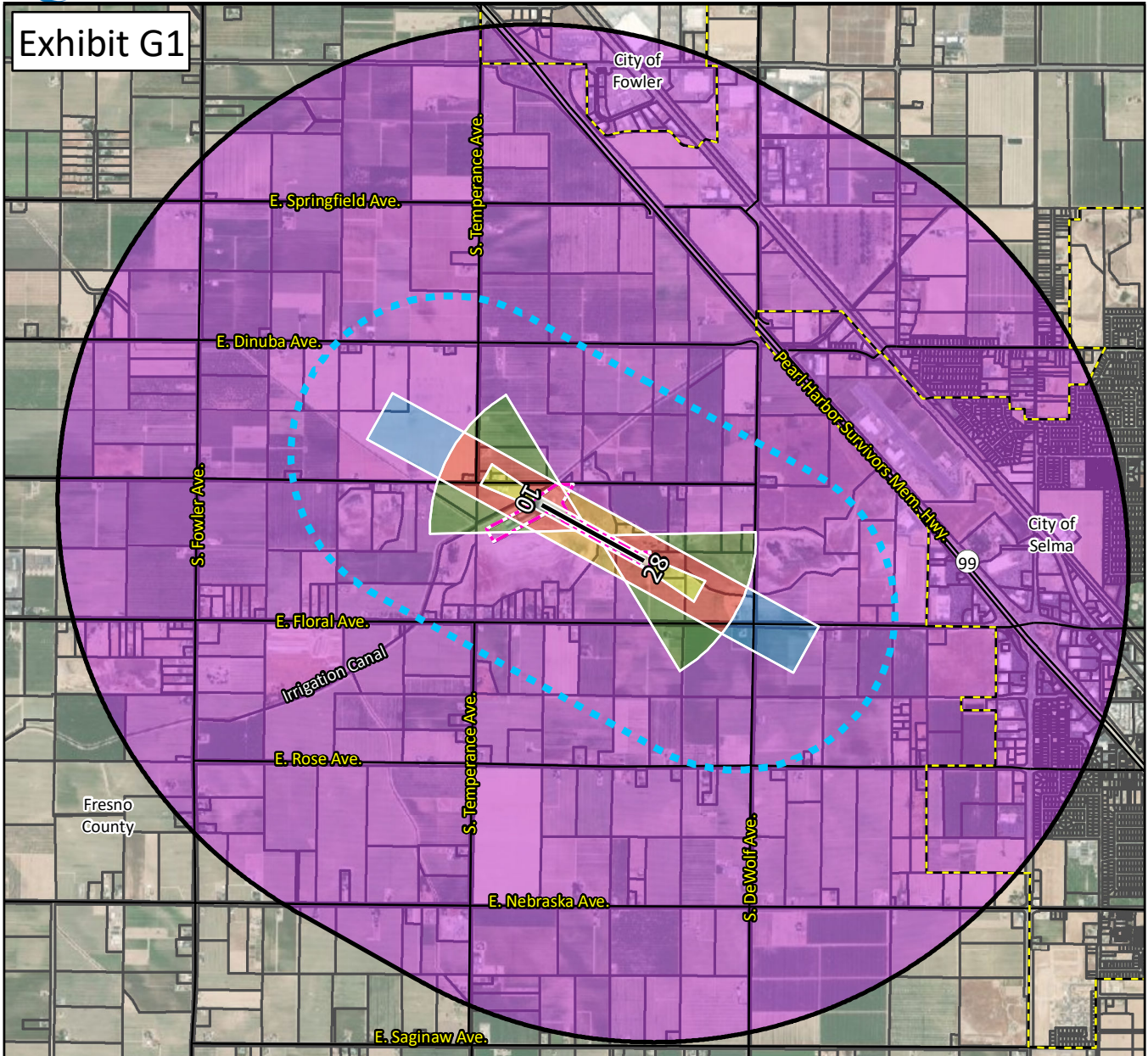
<sup>3</sup>Figure 3A, California Airport Land Use Planning Handbook (2011), and Coffman Associates Analysis. Sources: Fresno County Parcels, Fresno County Streets, ESRI Basemap Imagery (2020).

<sup>4</sup>Vulnerable Occupants Review Area (See Section 3.2.2 and Table 3A)





Exhibit G1

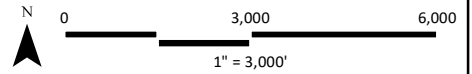


LEGEND

- Runway<sup>1</sup>
- Airport Property<sup>2</sup>
- Parcel Boundary
- Municipal Boundary
- Streets
- Airport Influence Area (AIA)<sup>3</sup>
- Vulnerable Occupants Review Area (See Section 3.2.2 & Table 3A)

Safety Zones<sup>4</sup>

- 1. Runway Protection Zone
- 2. Inner Approach/Departure Zone
- 3. Inner Turning Zone
- 4. Outer Approach/Departure Zone
- 5. Sideline Zone
- 6. Traffic Pattern Zone



<sup>1</sup>Runway digitized from ESRI Basemap Imagery (2016).

<sup>2</sup>APN: 34818043

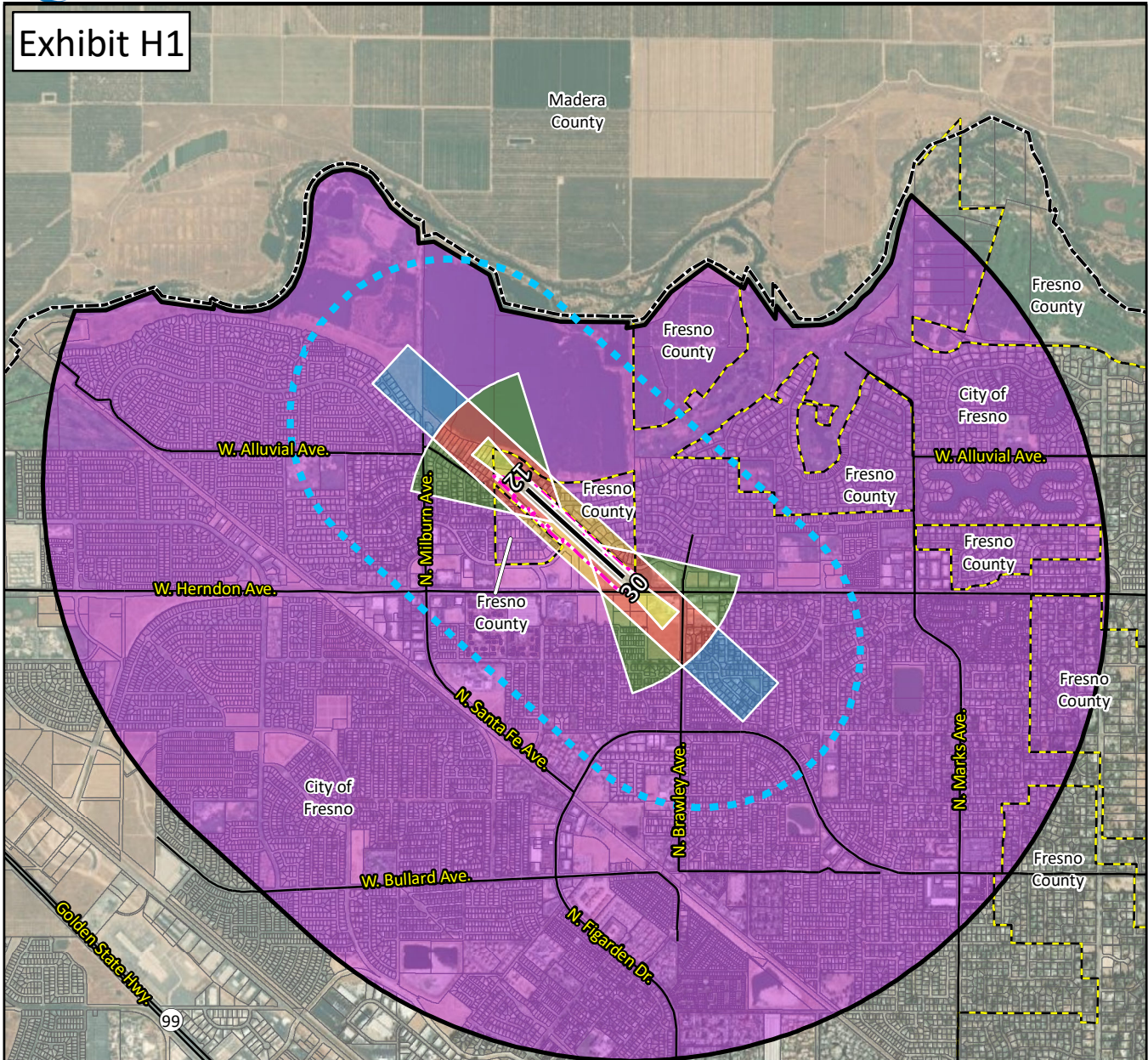
<sup>3</sup>Part 77 Conical Surface. See 14 CFR, Subchapter E, Part 77, §77.25.

<sup>4</sup>Figure 3A, California Airport Land Use Planning Handbook (2011), and Coffman Associates Analysis. Sources: Fresno County Parcels, Fresno County Streets, ESRI Basemap Imagery (2020).





# Exhibit H1

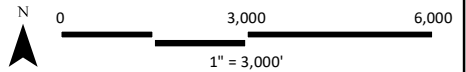


### LEGEND

- Runway<sup>1</sup>
- Airport Property<sup>2</sup>
- Parcel Boundary
- Municipal Boundary
- County Boundary
- Streets
- Airport Influence Area (AIA)<sup>3</sup>
- Vulnerable Occupants Review Area (See Section 3.2.2 & Table 3A)

### Safety Zones<sup>3</sup>

- 1. Runway Protection Zone
- 2. Inner Approach/Departure Zone
- 3. Inner Turning Zone
- 4. Outer Approach/Departure Zone
- 5. Sideline Zone
- 6. Traffic Pattern Zone



<sup>1</sup>FAA 5010 Master Record

<sup>2</sup>APN's: 50103102, 50103402, 50104202, 50105001, 50104702.

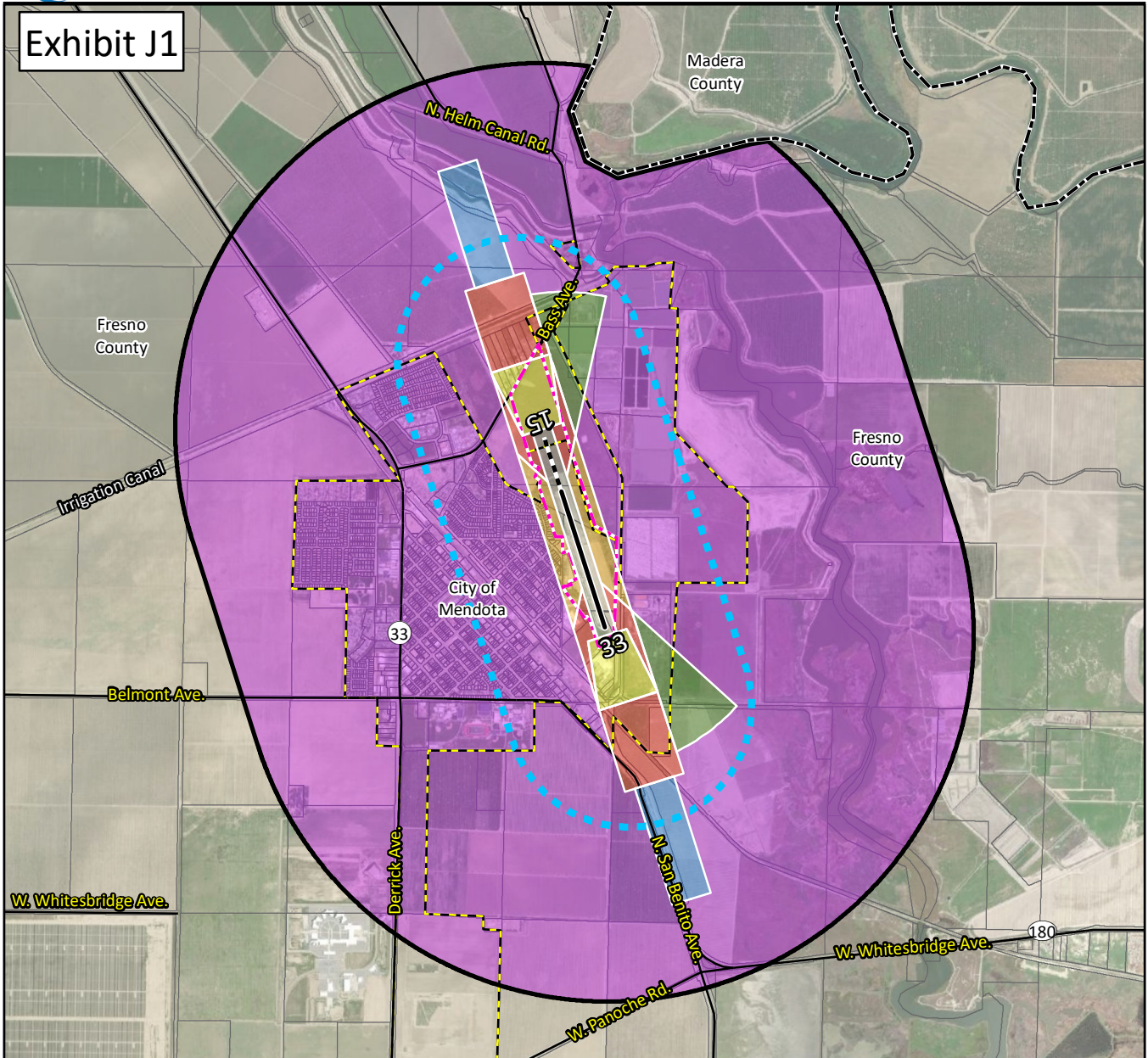
<sup>3</sup>Part 77 Conical Surface. See 14 CFR, Subchapter E, Part 77, §77.25.

<sup>4</sup>Figure 3A, California Airport Land Use Planning Handbook (2011), and Coffman Associates Analysis. Sources: Fresno County Parcels, Fresno County Streets, ESRI Basemap Imagery (2020).





Exhibit J1

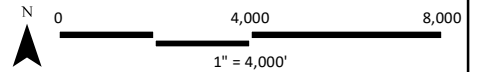


LEGEND

- Existing Runway<sup>1</sup>
- Ultimate Runway<sup>2</sup>
- Airport Property<sup>2</sup>
- Parcel Boundary
- Municipal Boundary
- County Boundary
- Streets
- Airport Influence Area (AIA)<sup>3</sup>
- Vulnerable Occupants Review Area (See Section 3.2.2 & Table 3A)

Safety Zones<sup>4</sup>

- 1. Runway Protection Zone
- 2. Inner Approach/Departure Zone
- 3. Inner Turning Zone
- 4. Outer Approach/Departure Zone
- 5. Sideline Zone
- 6. Traffic Pattern Zone



<sup>1</sup>FAA 5010 Master Record.  
<sup>2</sup>William Robert Johnston Airport Layout Plan.  
<sup>3</sup>Part 77 Conical Surface. See 14 CFR, Subchapter E, Part 77, §77.25.  
<sup>4</sup>Figure 3A, California Airport Land Use Planning Handbook (2011), and Coffman Associates Analysis. Sources: Fresno County Parcels, Fresno County Streets, ESRI Basemap Imagery (2020).