



We want to make it safer and more comfortable for everyone to travel in Fresno County.

2022 Safety Performance Targets (PM1)

Fresno COG 2022 Safety Performance Target Setting Process – Policy Board

Santosh Bhattarai

Fresno Council of Governments

02/24/2022

Safety Performance Measures

- Five Performance Measures
 - Number of Fatalities
 - Rate of Fatalities per 100 Million VMT
 - Number of Serious Injuries
 - Rate of Serious Injuries per 100 Million VMT
 - Number of Non-Motorized Fatalities and Serious Injuries

Previous Target Setting Activities

Year	Statewide Target	Fresno COG Target
2018	Zero by 2030	Evidence Based (Trendline)
2019	California SHSP	California SHSP
2020	Zero Deaths by 2050	Zero by 2050
2021	Toward Zero Death (TZD) by 2050	Toward Zero Death by 2050
2022	Toward Zero Death (TZD) by 2050	TBD

Tracking 2019 Statewide Targets

California 2019 Safety Performance Target Assessment

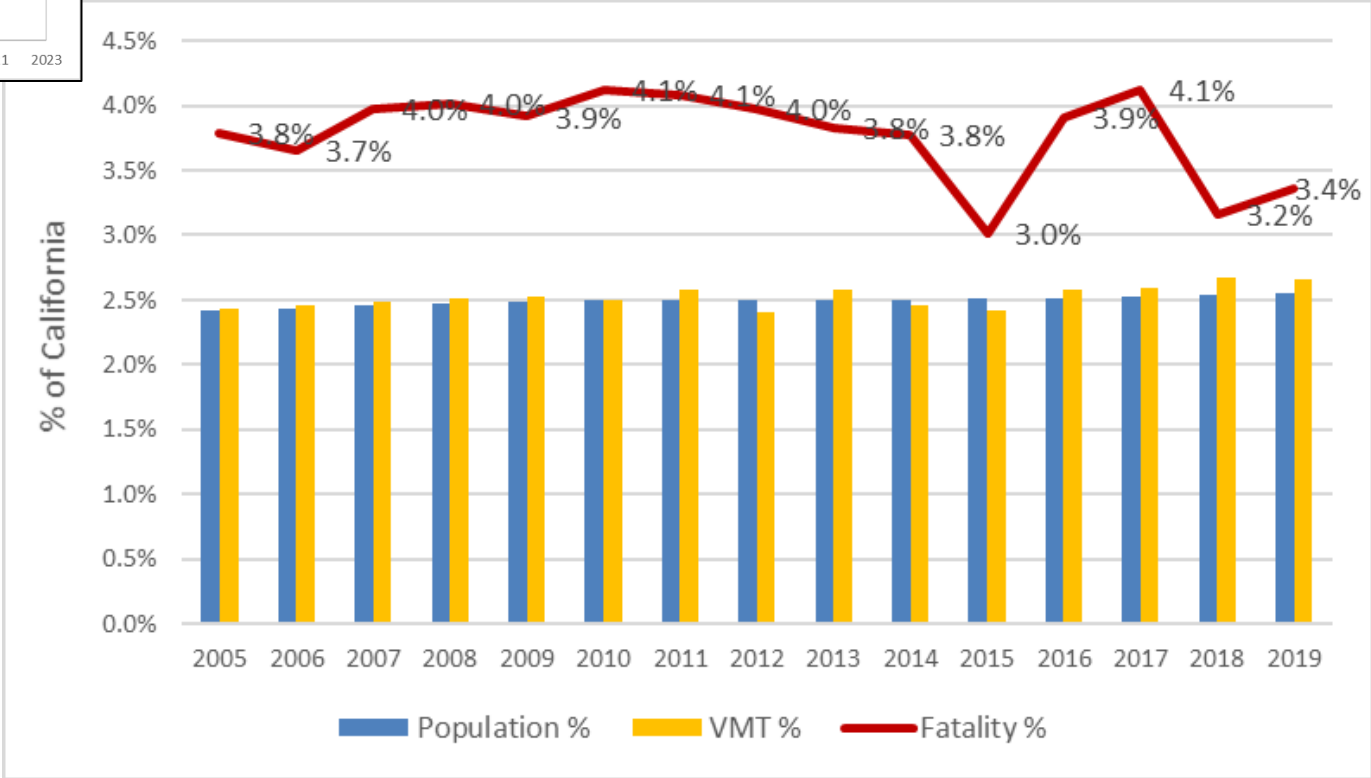
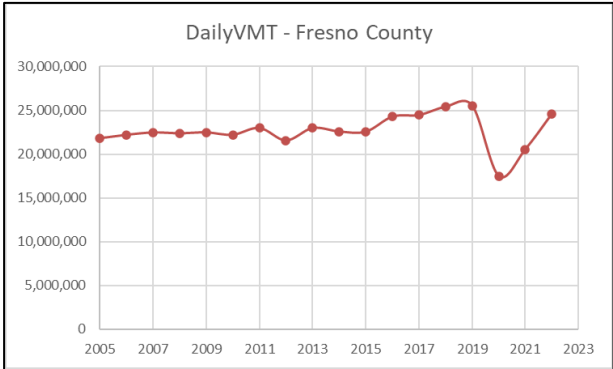
PERFORMANCE MEASURE	2015-2019 TARGET	2015-2019 ACTUAL	2013-2017 BASELINE	MET TARGET?	BETTER THAN BASELINE?	MET OR MADE SIGNIFICANT PROGRESS?
Number of Fatalities	3,445.4	3,702.4	3,463.4	No	No	No
Rate of Fatalities	0.995	1.084	1.028	No	No	
Number of Serious Injuries	12,688.1	14,382.0	12,207.8	No	No	
Rate of Serious Injuries	3.661	4.202	3.624	No	No	
Number of Non-Motorized Fatalities and Serious Injuries	3,949.8	4,337.4	3,953.8	No	No	



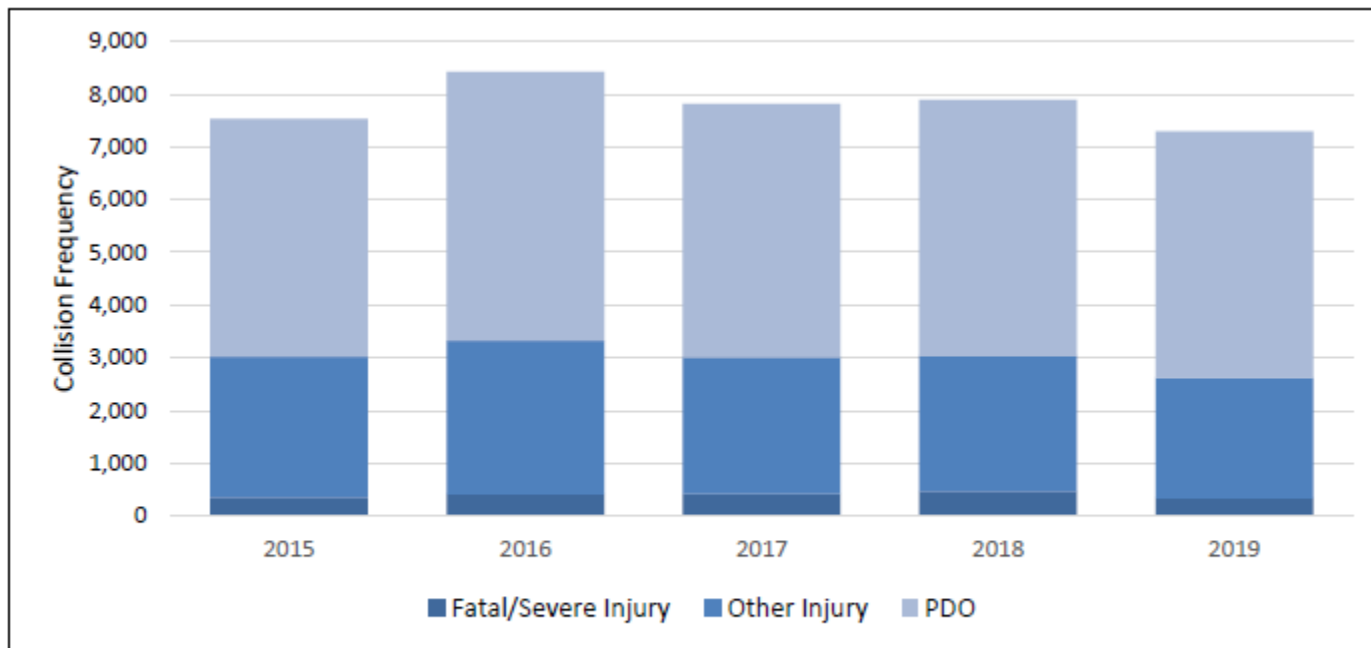
State and Fresno COG both failed to achieve the targets

Performance Measure	2015-2019 Target	Actual 2015-2019	2013-2017 Baseline	Met Targets?	Better than Baseline?
Number of Fatalities	141.2	130.6	129.6	✓	✗
Rate of Fatalities	1.58	1.46	1.51	✓	✓
Number of Serious Injuries	307.5	310	297	✗	✗
Rate of Serious Injuries	3.46	3.49	3.49	✗	✗
Ped/Bike Fatalities and Serious Injuries	53.4	52	58.8	✓	✓

State Share of Population, VMT and Fatalities



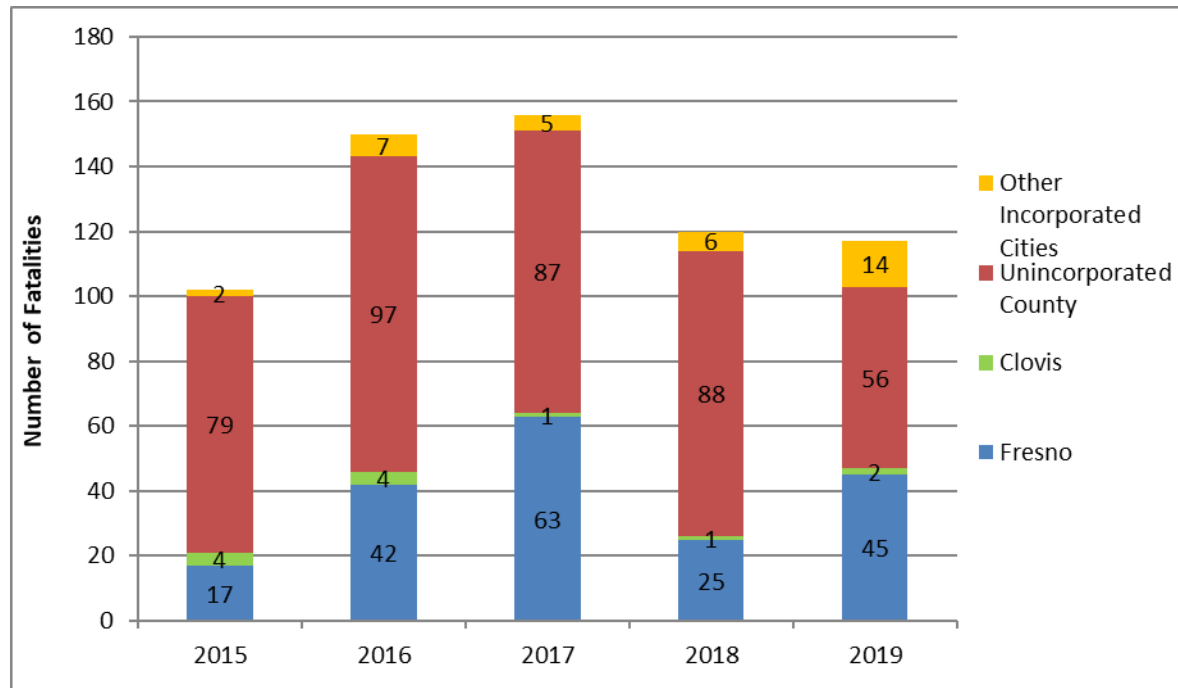
Year-over-Year Trends in Collision Data



Source: City of Fresno, SWITRS, TIMS

Note: "Other injury" includes "Other visible injury" and "Complaint of pain" collisions. "PDO" = property damage only.

Fatalities by Jurisdiction



Source: City of Fresno, TIMS, SWITRS

Top 20 Regional Intersections

#	Intersection	Jurisdiction	Collision Severity Score	Total Number of Collisions	Fatal Collisions	Severe Injury Collisions	Other Visible Injury Collisions	Complaint of Pain Collisions	Property Damage Only Collisions
1	LAC JAC AVE & DINUBA AVE	Fresno County	201.09	15	0	5	3	3	4
2	FRANKWOOD AVE & CENTRAL AVE	Fresno County	164.99	14	0	4	4	3	3
3	ACADEMY AVE & ADAMS AVE	Fresno County	162.93	18	1	3	2	4	8
4	BETHEL AVE & DINUBA AVE	Fresno County	157.25	49	1	2	7	20	19
5	AUBERRY RD & FRAZIER RD	Fresno County	154.92	8	2	2	1	0	3
6	KEARNEY BLVD & CORNELIA AVE & MADISON AVE	Fresno County	139.01	29	0	3	7	6	13
7	CLOVIS AVE & MOUNTAIN VIEW AVE	Fresno County	137.94	19	1	2	8	5	3
8	BETHEL AVE & ROSE AVE	Fresno County	135.54	25	1	2	3	11	8
9	CLOVIS AVE & NEBRASKA AVE	Fresno County	133.24	20	0	3	6	4	7
10	MARKS AVE & JENSEN AVE	Fresno County	132.02	19	2	1	6	3	7
11	AMERICAN AVE & GOLDEN STATE BLVD	Fresno County	128.81	26	2	1	1	8	14
12	FRIANT RD & BELCHER	Fresno County	128.36	15	0	3	4	4	4
13	BETHEL AVE & NEBRASKA AVE	Fresno County	127.34	15	2	1	4	3	5
14	MCMULLIN GRD & MANNING AVE	Fresno County	127.13	19	1	2	4	2	10
15	FRONTIER TRAIL LN & SAMPLE RD	Fresno County	122.99	8	0	3	3	2	0
16	SIERRA AVE & BLACKSTONE AVE	Fresno	121.69	40	0	4	5	9	22
17	BLACKSTONE AVE & GARLAND AVE	Fresno	121.32	14	0	3	1	3	7
18	TEMPERANCE AVE & CENTRAL AVE	Fresno County	121.12	13	1	2	1	3	6
19	TEMPERANCE AVE & JENSEN AVE	Fresno County	120.58	34	0	4	4	11	15
20	CEDAR AVE & FOUNTAIN WAY	Fresno	119.91	12	2	1	1	2	6

Source: 2022 Regional Safety Plan (RSP), <https://www.fresnocog.org/project/2021-regional-safety-plan-local-road-safety-plan/>

Top 20 Regional Segments

#	Roadway	Jurisdiction	Collision Severity Score	Total Number of Collisions	Fatal Collisions	Severe Injury Collisions	Other Visible Injury Collisions	Complaint of Pain Collisions	Property Damage Only Collisions
1	SR 180 (from Temperance Ave to De Wolf Ave)	Fresno County	191.03	57	2	6	10	10	29
2	I-5 (from North of Lassen Ave to South of Jayne Ave)	Fresno County	173.45	16	0	3	0	3	10
3	I-5 (from North of Lassen Ave to South of Jayne Ave)	Fresno County	173.45	8	0	2	1	0	5
4	Millerton Rd (from West of Marina Dr to Sky Harbour Dr)	Fresno County	145.02	37	3	4	5	4	21
5	Auberry Rd (from East of Powerhouse Rd to West of Old Auberry Rd (East))	Fresno County	144.23	18	1	3	5	0	9
6	Kings Canyon Rd (from West of Bethel Ave to East of Bethel Ave)	Fresno County	142.75	24	0	4	1	5	14
7	Kings Canyon Rd (from West of Hills Valley Rd to Hills Valley Rd)	Fresno County	142.2	11	1	3	3	3	1
8	Millerton Rd (from West of Via Bellaggio to East of Via Bellaggio)	Fresno County	136.69	18	1	4	1	1	11
9	SR 41 (from North of Olive Ave to Fresno St)	Fresno	130.51	83	0	3	8	16	56
10	SR 41 (from South of North Ave to South of Central Ave)	Fresno County	130.17	62	1	4	4	14	39
11	Tollhouse Rd (from Tollhouse Rd (West) to North of Sample Rd)	Fresno County	120.09	79	0	8	14	8	49
12	I-5 (from North of Panoche Rd to South of Panoche Rd)	Fresno County	111.76	13	1	2	0	1	9
13	Friant Rd (from North of Birkhead to South of N Friant Frontage)	Fresno County	111.61	13	1	2	4	3	3
14	Millerton Rd (from West of Marina Dr to North Fork Rd)	Fresno County	108.8	33	1	2	6	5	19
15	I-5 (from North of Mountain View Ave to South of Mountain View Ave)	Fresno County	108.33	16	1	2	2	3	8
16	SR 180 (from Belmont Ave to West of Temperance Ave)	Fresno	107.93	18	1	2	2	3	10
17	I-5 (from North of Coalinga Mendota Rd (South) to South of Coalinga Mendota Rd (North))	Fresno County	107.85	6	2	0	2	1	1
18	I-5 (from North of Derrick Ave to South of Kamm Ave)	Fresno County	106.71	13	1	2	2	2	6
19	I-5 (from North of Coalinga Mendota Rd (South) to North of Coalinga Mendota Rd (South))	Fresno County	106.17	20	0	3	1	2	14
20	Jensen Ave (from West of Temperance Ave to De Wolf Ave)	Fresno County	106.11	4	0	2	1	0	1

Source: 2022 Regional Safety Plan (RSP), <https://www.fresnocog.org/project/2021-regional-safety-plan-local-road-safety-plan/>

2022 Target Options

- Option 1: 2022 State Target
 - Toward Zero Death by 2050
 - 3.61% annual decrease in fatalities
 - 1.66% annual increase in serious injuries
- Option 2: Maintain Current Level
- Option 3: Fit the 5-year average curve (Trendline)
- Option 4: Follow the 2021 Targets

Fresno COG Safety Efforts

- Recently developed two plans concurrently
 - Regional safety plan
 - Multi-jurisdictional local road safety plan for 10 jurisdictions in Fresno County that will help the local agencies secure the HSIP funds
 - COG website: <https://www.fresnocog.org/project/2021-regional-safety-plan-local-road-safety-plan/>
- Congestion Management Process (CMP)
- Funding programs dedicated to improving safety
 - Active Transportation Program (ATP)
 - Highway Safety Improvement Program (HSIP)
 - State Highway Operations and Protection Program (SHOPP) Collision Reduction
 - Surface Transportation Block Grant Program (STBG)

Recommended Targets

Fatalities

Methodology	2022	2018-2022
State Target 2022	108	115.7
Maintain 2019	121	120.8
Trendline	200	155.9
Follow Target 2021	107	113.2

Serious Injuries

Methodology	2022	2018-2022
State Target 2022	231	256.8
Maintain 2019	220	252.4
Trendline	429	392.9
Follow Target 2021	363	372.2

Non-motorized Fatalities and Serious Injuries

Methodology	2022	2018-2022
State Target 2022	49	53.6
Maintain 2019	52	54.8
Trendline	46	55.7
Follow Target 2021	61	63.3

- Statewide targets aggressive but achievable
- Fatalities target in line with 2021 target
- Maintaining the same level for serious injuries is close to the statewide targets
- The recently completed safety plans will improve the existing conditions or at least maintain the same level
- Trendline approach is overestimated for fatalities and serious injuries

Thank You

- Any questions?