

GLDPartners

Background and Team Expertise

- Legally organized as Global Logistics Development Partners LLC
- Established 2009 as an Arizona Corporation
- Based in US, with projects In North America, Europe and Asia
- Senior Professionals/Experience

Seaport,
Airport, Rail
Development

Economic
Development

Mobility
Technologies

Project
Structuring

Public/Private
Project
Finance

Planning and
Engineering

Infrastructure
System
Planning

Policy and
Legislation



GLDPartners Projects



GLDPartners Business Areas

Corporate Supply Chain Strategy

Aerospace
Automotive
Electronics
Pharma
Industrial Equipment
Food Production
Logistics
Specialty Chemicals
Renewable Energy

Airport-Seaport-Inland Port Logistics & Investment Districts

Alaska	Mississippi
Arizona	New York
California	New Mexico
Florida	Ohio
Georgia	Texas
Kansas	Utah
Maryland	Wyoming
Canada	Philippines
Chile	Sweden
France	Thailand
Iceland	Malaysia
Indonesia	UK

Mobility and Automation Client/Partner Examples



GLDPartners

Examples of Our Partners and Collaborators

Infrastructure/P3

- Jacobs
- AECOM
- PB
- Cambridge Systematics
- ARUP
- Fehr & Peers
- Kimley-Horn
- Ardian
- Itinera
- Nossaman



Transportation/Technology

- Daimler
- PACCAR
- Ford Motor
- Toyota Research Institute
- Nikola
- Luminar Technologies
- Zayo Group
- Plug Power
- ChargePoint
- Intel



GLDPartners

Project Examples

- Port, Airport, Inland Port
- US and Abroad
 1. Lyon Airport/Southern European Logistics Hub - France
 2. CentrePort - Canada
 3. Bangkok New Airport- Thailand
 4. Alaska Global Forward Deployment Hub- USA
 5. M-5 Short Sea Shipping Investment Plan - USA
 6. New Mexico TradePort - USA
 7. Utah Inland Port - USA
 8. Port Manatee Container Complex - USA
 9. Port of Gulfport Privatization/New Container Complex - USA

GLDPartners

Lyon Airport/Southern European Logistics Hub

- Privatization of France's Third Busiest Airport
- With Global Infrastructure Fund Assessed Market Potential and Valuation Impacts
- Developed Airfield-Adjacent Asset Strategy For Cargo
- Developed Airport Property Large-Scale Logistics, Distribution and Manufacturing Center
- Acquisition Strategy From Geneva, Paris and Marseilles
- Focus on Pharma, Automotive and Medical Products



GLDPartners CentrePort Canada

- National Logistics and investment Hub
- 25,000 acres
- Three Railroad Investments + Major Airport
- \$250M Initial Public Investment
- Developed Core Business Plan
- Created Investment Competitiveness Model; Strategic Central North American Location
- Created Intersection With West Coast Ports
- Develop First Phase Investor Prospectus



GLDPartners

Bangkok - New Third Airport

- Development and Privatization of Bangkok's Third Airport
- With Jacobs, Zurich Airports Developed Detailed Business Proposition and Financials
- With Eastern Economic Corridor, Built Around Thailand 4.0 Strategy For Advancing National Economy
- Crafted Comprehensive Ground-Up Cargo, Cargo District and Free Trade Zone Plan
- Southeast Asia ECommerce Hub
- Major Intermodal Complex With Port



GLDPartners

Alaska - Global Forward Deployment Hub

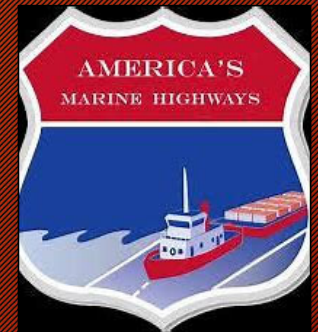
- Development of Asia-North America Logistics Hub
- 3rd Busiest Global Cargo Airport
- 80% of Air Cargo Between NA and Asia Stops
- New Model: Strategic Logistics & Investment Hub
- Strategic Supply Chain Product for Pharma, Toys, Electronics, Automotive, Medical Supplies and Equipment
- On and Off Airport Development, Logistics Connectivity and Investment Strategy



GLDPartners

M-5 Short Sea Shipping Investment Plan

- Marine Highway 5; Remove Cargo From Highway
- With PB, West Coast Ports and USDoT Developed Feasibility and Delivery Plan
- Developed Plan For 15 Port-Port Pairs
- Market Take-Up
- Infrastructure
- Labor Conditions
- Developed Vessel Size/Type Investment Plan



GLDPartners

New Mexico TradePort

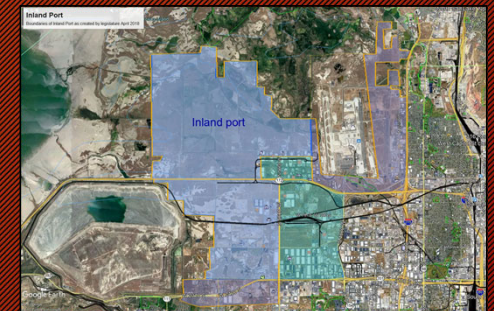
- Developed NM Mobility Strategy - Statewide Laboratory
- Named Three Main Hubs
- Developing Projects at Two Hubs
- Two Transcontinental Corridors
- Two Truck Mobility Complexes
- I-40: Mobility + Logistics Hub
 - 100 ac
- I-10: Mobility + Logistics + Investment Hub
 - UPRR Intermodal; Intl Border Crossing; Cargo Airport
 - 25,000 ac



GLDPartners

Utah Inland Port

- Intermountain West Logistics and Investment Hub
- For Governor and World Trade Center, Undertook Comprehensive Feasibility Plan
- 25% of City of Salt Lake City; 7,000 ac
- Two Interstate Highways, New \$4B Airport; UPRR
- Developed Competitiveness Model
- Created Business Structure for New Authority
- Developed Authority Mobility Strategy



GLDPartners

Port Manatee Container Complex

- Development Feasibility For New Container Terminal
- With ARUP Developed Market Analytics and Competitive Profile Versus Other Ports
- Advised Port Board and Manatee County Commissioners About Private Investment Potential
- Core Advice Was to Wait For Opening of Panama Canal
- Developed Investment Prospectus



GLDPartners

Port of Gulfport Privatization/Container Complex

- Acquire Private Investor To Develop New Container Terminal
- With ARUP Developed Market, Competitiveness Business Proposition
- Advised Mississippi Development Authority, Port Board and Negotiated With Investors
- Interfaced With Large Global (Turkish) Maritime/Logistics Investment Operator/Investor



GLDPartners

Inland Port Project Delivery Team

- Designed to Provide Expertise in Key Areas
- Each Are Global Companies
 - Largest Diversified Engineering Company in the World
 - Most Advanced Rail System and Infrastructure Firm
 - Largest Fiber Infrastructure Asset Owner in North America/Europe
 - US Leading Public-Private Law Firm; Highly Recognized By USDoT and Deepest Knowledge About State of California
 - Hydrogen/Clean Energy Experts
 - Largest Heavy Truck Manufacturer in North America
- Recognized Companies and Senior Professionals; Best Minds in Each Area
- GLDPartners Has Worked With Each Before

GLDPartners Inland Port Delivery Team



PM: Econ Dev/Clean Energy/P3/Logistics



Engineering, Planning, Clean Energy



Rail System Planning and Infrastructure



Telecom/Data/Automation Infrastructure



Legal/Public-Private Partnerships



Hydrogen Policy/Infrastructure



Truck Manufacturer/Autonomy-Clean Powertrain