

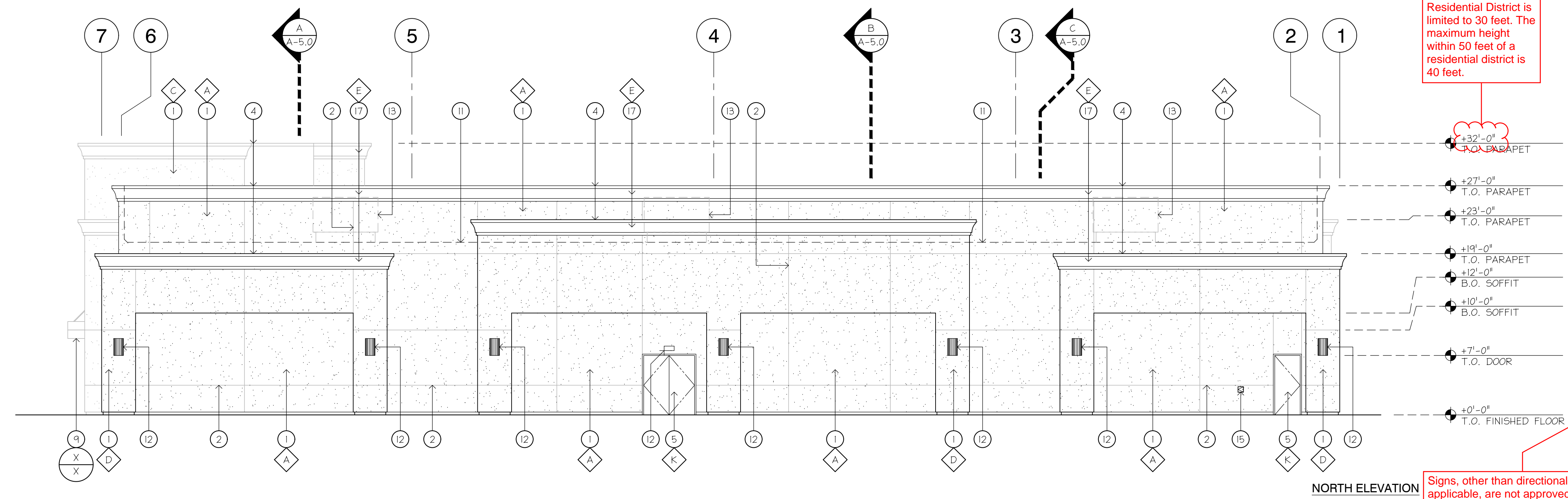
KEYED NOTES

- 1 LOCATION OMEGA WALL STUCCO SYSTEM - SYSTEM COMPONENTS SHALL INCLUDE BUT NOT BE LIMITED TO AKROFLEX HM (EIFS WITH DRAINAGE) OVER AKROGUARD WATER-RESISTIVE COATING SYSTEM OR CODE-COMPLYING WATER-RESISTIVE BARRIER) - INSULATION BOARD (2" THICK) SHALL BE CORRUGATED AND MECHANICALLY FASTENED WITH A BASE COAT OF STYROGULUE TF - FINISH SHALL BE AKROFLEX OVER AKROFLEX REINFORCING MESH - REFER TO COLOR/MATERIAL LEGEND AND DETAILS FOR ADDITIONAL INFORMATION AND REQUIREMENTS.
- 2 LOCATION OF VERTICAL/HORIZONTAL EXPANSION JOINT AND/OR REVEAL IN EIFS SYSTEM - REFER TO DETAIL FOR ADDITIONAL INFORMATION AND REQUIREMENTS.
- 3 LOCATION OF GLAZING W/ BLACKOUT INSTALLED ON THE INSIDE FACE OF THE GLAZING - TYP.
- 4 LOCATION OF GSM PARAPET CAP FLASHING - PAINT 2-COATS ENAMEL TO MATCH COLOR OF FINISH MATERIAL DIRECTLY BELOW.
- 5 LOCATION OF HOLLOW METAL DOOR AND FRAME - PAINT (2) COAT ENAMEL TO MATCH ADJACENT WALL COLOR - REFER TO DOOR SCHEDULE FOR ADDITIONAL INFORMATION.
- 6 LOCATION OF DUAL PANE GLAZING SYSTEM - REFER TO COLOR/MATERIAL LEGEND FOR ADDITIONAL INFORMATION.
- 7 LOCATION OF STOREFRONT DOOR(S) - REFER TO DOOR SCHEDULE AND DETAIL(S) FOR SPECIFICATIONS AND ADDITIONAL INFORMATION.
- 8 LOCATION OF STREET ADDRESS NUMERALS LOCATED SO AS TO BE PLAINLY VISIBLE FROM THE STREET OR ROAD - LETTERS, NUMBERS, AND SYMBOLS SHALL BE A MINIMUM OF 12" HIGH, HAVE A 1" STROKE, BE REFLECTIVE, AND BE CONTRASTING WITH THE BACKGROUND COLOR OF THE BUILDING - DURING THE HOURS OF DARKNESS, THE NUMBERS SHALL BE ELECTRONICALLY ILLUMINATED (INTERNAL OR EXTERNAL).
- 9 LOCATION OF EXTERIOR METAL CANOPY - REFER TO COLOR/MATERIAL LEGEND FOR SPECIFICATIONS AND ADDITIONAL INFORMATION.
- 10 POTENTIAL TENANT SIGNAGE LOCATION - REFER TO ELECTRICAL PLANS FOR ADDITIONAL INFORMATION AND REQUIREMENTS - PROVIDE SELF ADHERED FLASHING UNDER BUILDING PAPER TYPICAL THIS WALL FACE 12" BEYOND THE PERIMETER OF THE SIGN CONFIGURATION.
- 11 DASHED LINE INDICATES APPROXIMATE TOP OF ROOFING (BEYOND).
- 12 LOCATION OF NEW SURFACE MOUNTED LIGHT FIXTURES - REFER TO ELECTRICAL PLANS FOR ADDITIONAL INFORMATION AND REQUIREMENTS.
- 13 DASHED LINES INDICATE APPROXIMATE LOCATION OF HVAC UNIT(S) ON ROOF DECK SCREENED BY PARAPET AS SHOWN.
- 14 LOCATION OF 36"x36", LOCKABLE, FIRE RISER ACCESS DOOR - PAINT TO MATCH EIFS.
- 15 LOCATION OF NEW EMERGENCY ACCESS DOOR - ACCESS DOOR WILL SERVE THE FUTURE LABORATORY/DIALYSIS CLINIC WATER SHUT OFF - GENERAL CONTRACTOR SHALL COORDINATE WITH TENANT IMPROVEMENT PLANS FOR EXACT LOCATION.
- 16 LOCATION OF AUTOMATIC ELECTRIC SLIDING ENTRY DOOR - SEE DOOR SCHEDULE FOR ADDITIONAL INFORMATION.
- 17 LOCATION OF NEW EPS FOAM TRIM WITH COLORED EIFS FINISH - REFER TO COLOR/MATERIAL LEGEND FOR ADDITIONAL INFORMATION.

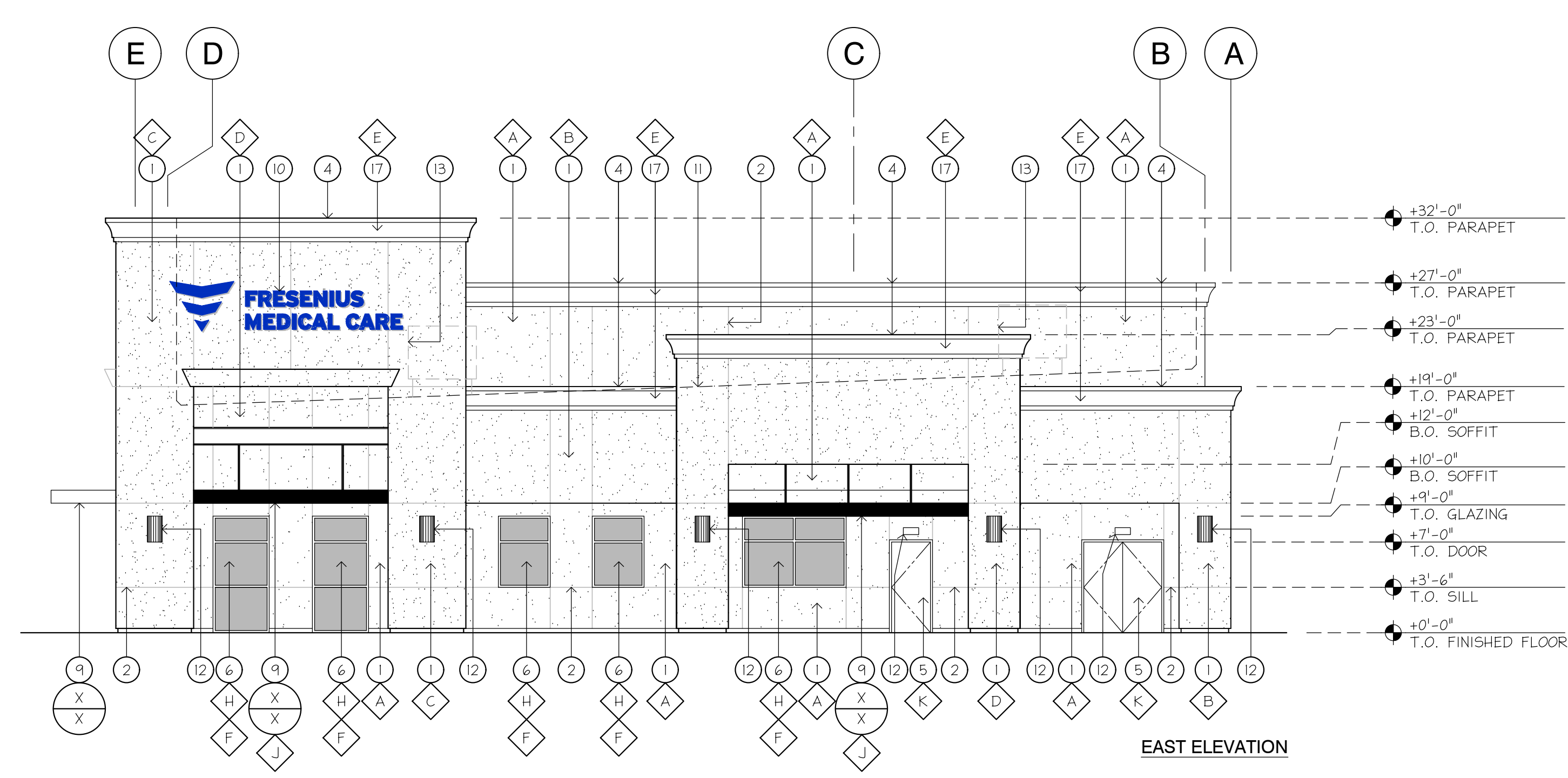
Comply with Section 15-1305 for facade design development standards. Verify compliance.

Per section 15-1304 of the FMC, The maximum height within 40 feet of a Residential District is limited to 30 feet. The maximum height within 50 feet of a residential district is 40 feet.

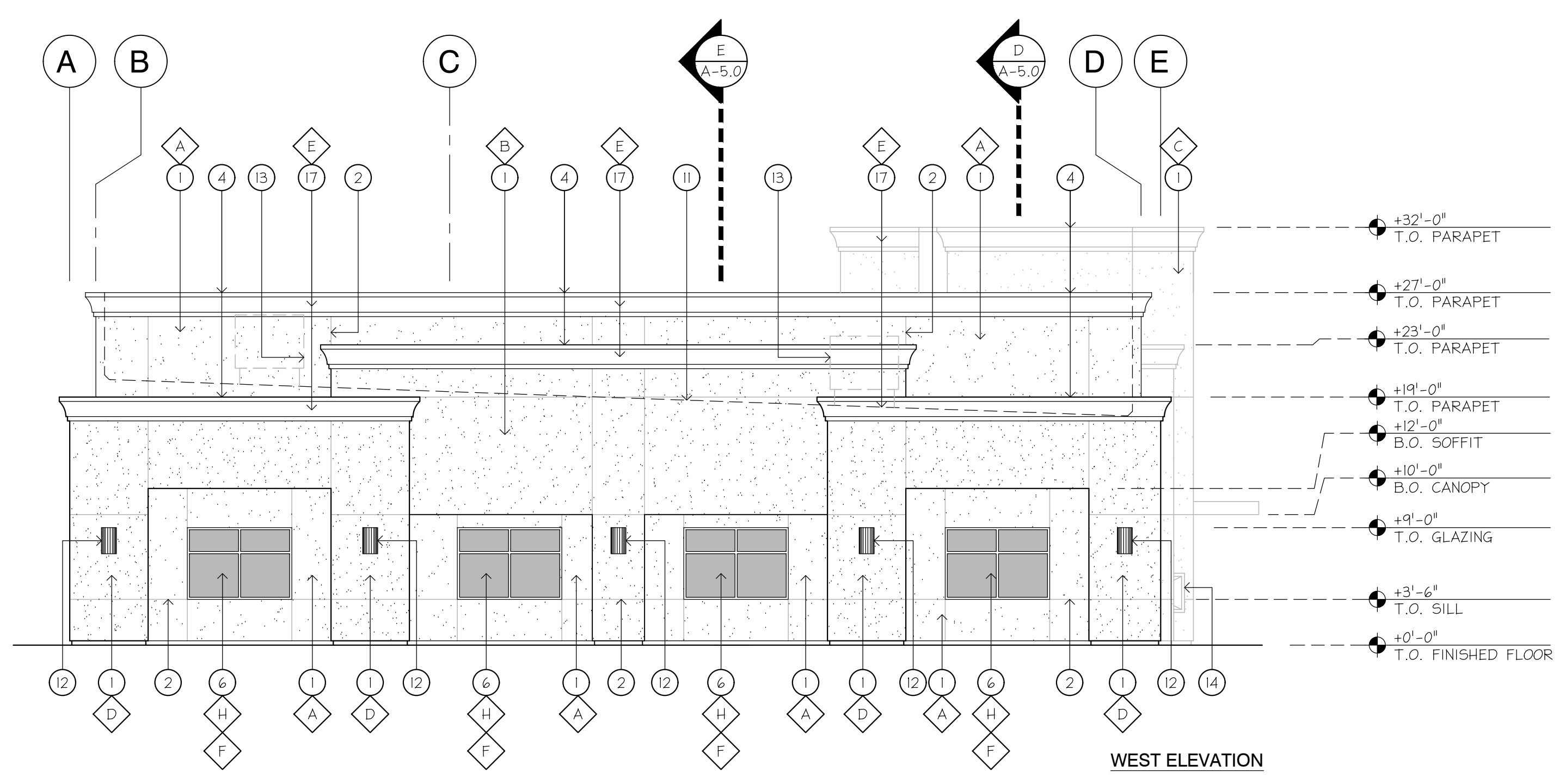
Signs, other than directional signs, if applicable, are not approved for installation as part of this special permit.
All proposed sign shall be submitted under a separate sign application.



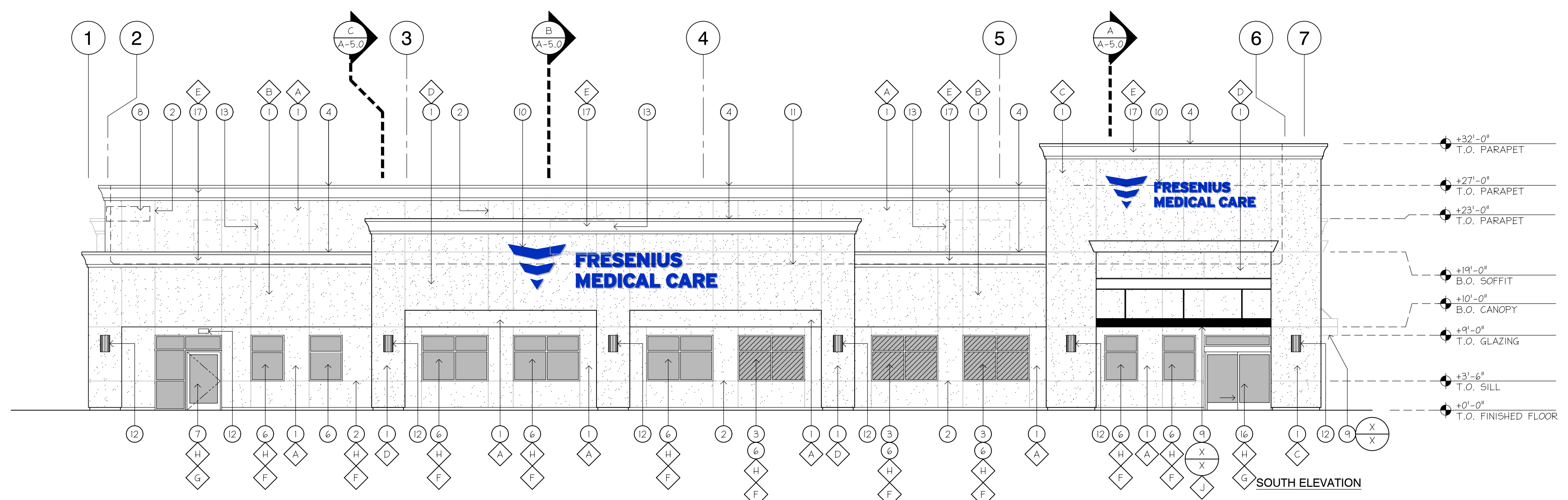
NORTH ELEVATION



EAST ELEVATION



WEST ELEVATION



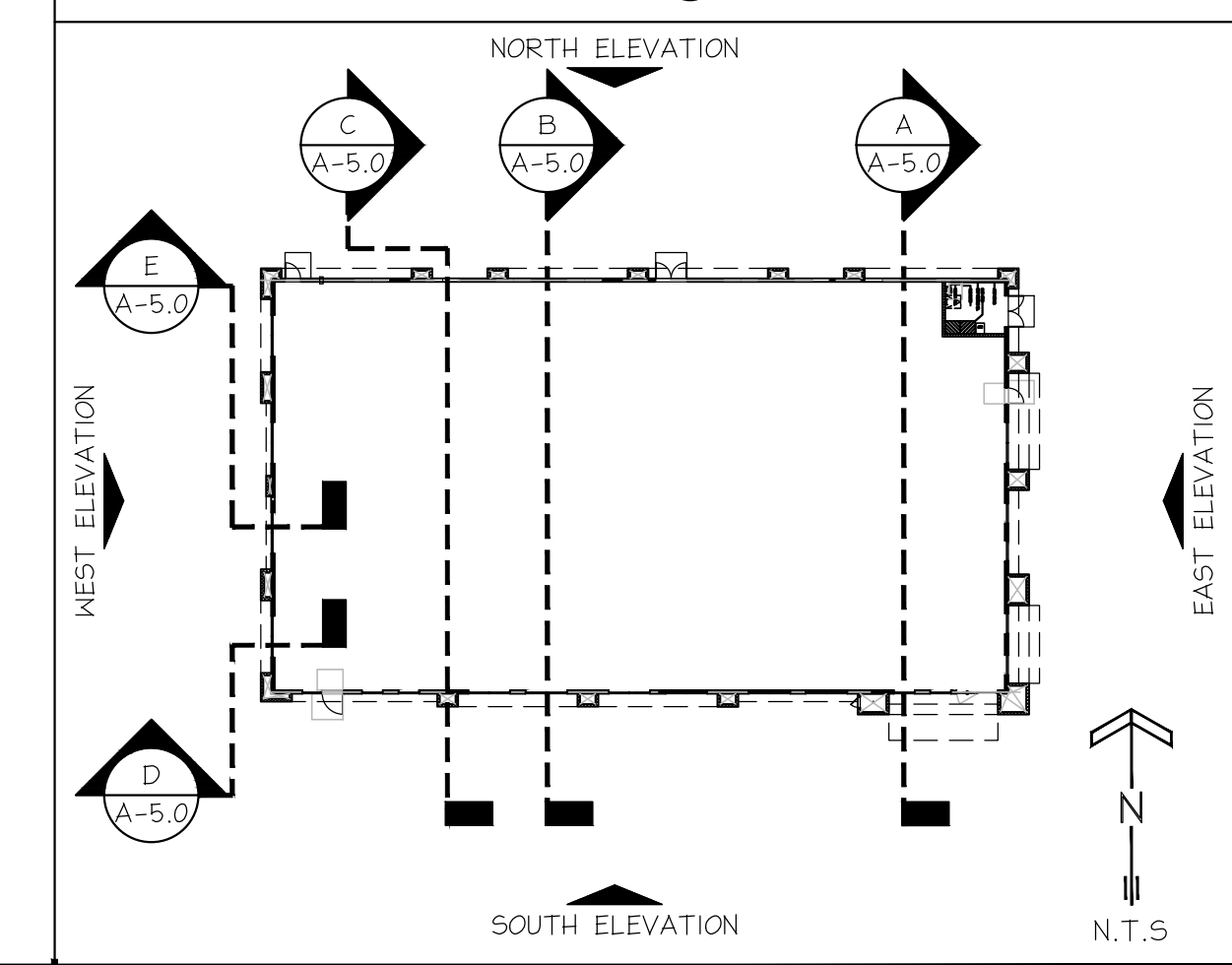
SOUTH ELEVATION

COLOR / MATERIAL LEGEND

MATERIAL	FINISH	COLOR
A EIFS (BASE)	PAINTED	DUNN EDWARDS DEC754 QUICKSAND
B EIFS (FIELD)	PAINTED	DUNN EDWARDS DEC772 NAVAJO WHITE
C EIFS (ACCENT)	PAINTED	DUNN EDWARDS DE6235 NORTHGATE GREEN
D EIFS (ACCENT)	PAINTED	DUNN EDWARDS DEC739 GOLDEN GATE
E EIFS (ACCENT)	PAINTED	DUNN EDWARDS DEC718 TIESA TAN
F GLAZING SYSTEM	FACTORY FINISH	DARK GRAY
G STOREFRONT DOOR	FACTORY FINISH	DARK BRONZE
H ALUMINUM STOREFRONT SYSTEM	FACTORY FINISH	DARK BRONZE
I METAL CANOPY	PAINTED	DARK BRONZE
J HOLLOW METAL DOOR	PAINTED	DUNN EDWARDS DEC754 QUICKSAND

NOTE TO GENERAL CONTRACTOR:
GENERAL CONTRACTOR SHALL PROVIDE BRUSH-OUT PAINT COLORS TO THE DESIGN FIRM FOR REVIEW AND APPROVAL PRIOR TO PAINTING THE PROPOSED BUILDING FINISHES.
ALL NEW GLAZING SHALL COMPLY WITH THE REQUIREMENTS OF DETAIL: [Symbol]

REFERENCE PLAN



APPL. NO. P23-00186 EXHIBIT E-1 DATE 03/02/2023
PLANNING REVIEW BY _____ DATE _____
TRAFFIC ENG. _____ DATE _____
APPROVED BY _____ DATE _____
CITY OF FRESNO DARM DEPT

ALL IDEAS, DESIGNS, AND PLANS ARE OWNED BY AND ARE PROPERTY OF CENTERLINE DESIGN, LLC AND/OR CONSULTANTS. THESE IDEAS, DESIGNS, AND PLANS ARE INSTRUMENTS OF PROFESSIONAL SERVICE AND ARE PROTECTED BY COMMON LAW, STATUTORY AND OTHER RESERVED RIGHTS INCLUDING COPYRIGHT. THESE IDEAS, DESIGNS, AND PLANS MAY NOT BE REPRODUCED OR USED FOR ANY PURPOSE WITHOUT THE WRITTEN CONSENT OF CENTERLINE DESIGN, LLC AND/OR CONSULTANTS.

PROPOSED EXTERIOR ELEVATIONS

PROJECT
PROPOSED BUILDING SHELL DEVELOPMENT FOR:
DDYS FIRST AND GETTYSBURG
3147 EAST GETTYSBURG AVENUE
FRESNO, CA. 93726

STATUS

Current Release Date	02-01-2023
Planning Submittal	01-17-2023
Plan Check Submittal	--

REVISIONS

1	
2	
3	
4	

IDENTIFICATION

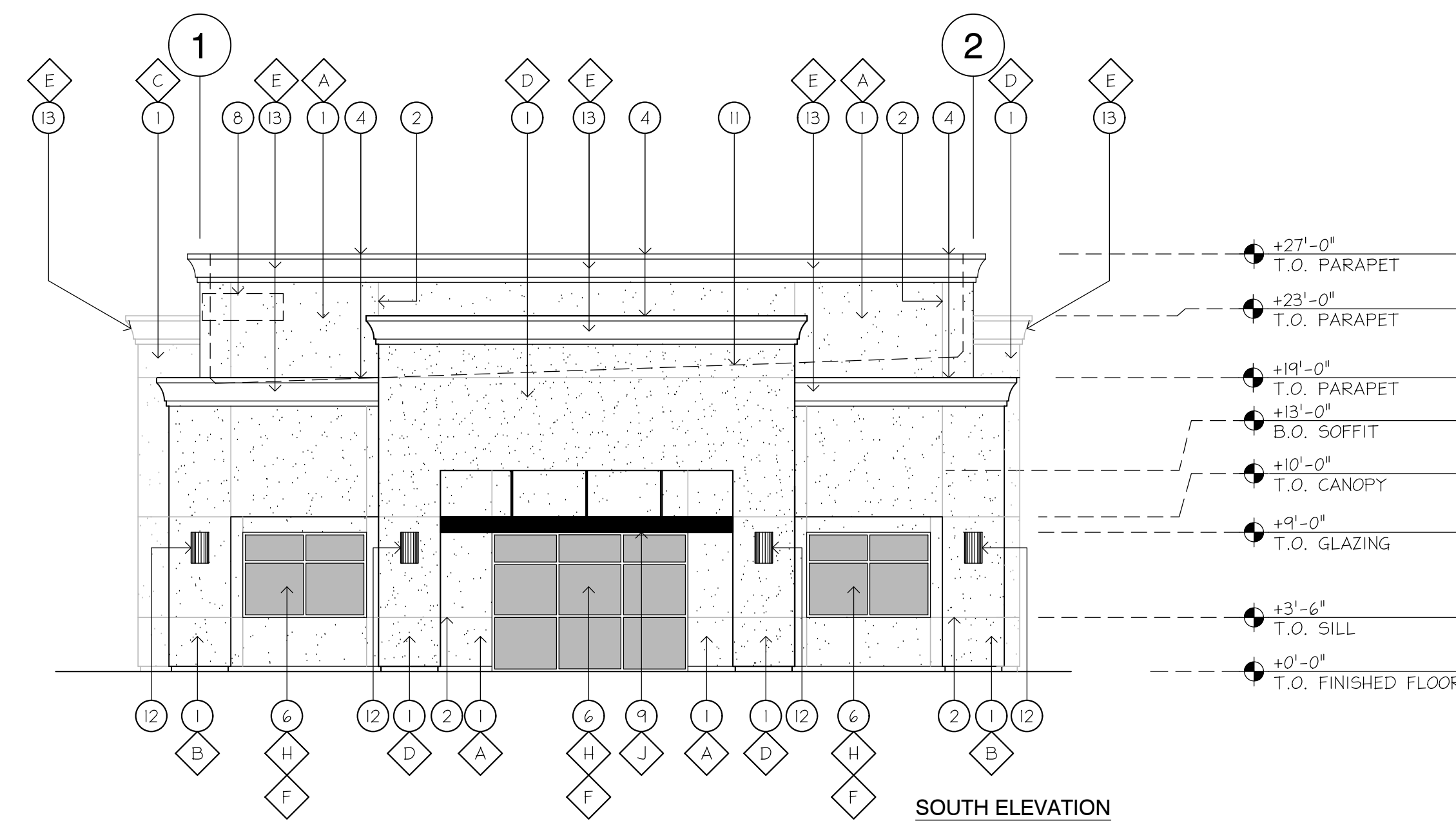
Scale	1/8" = 1'-0"
Project Coordinator	BRYAN POK
Project No.	21-159
Sheet	A-3.0



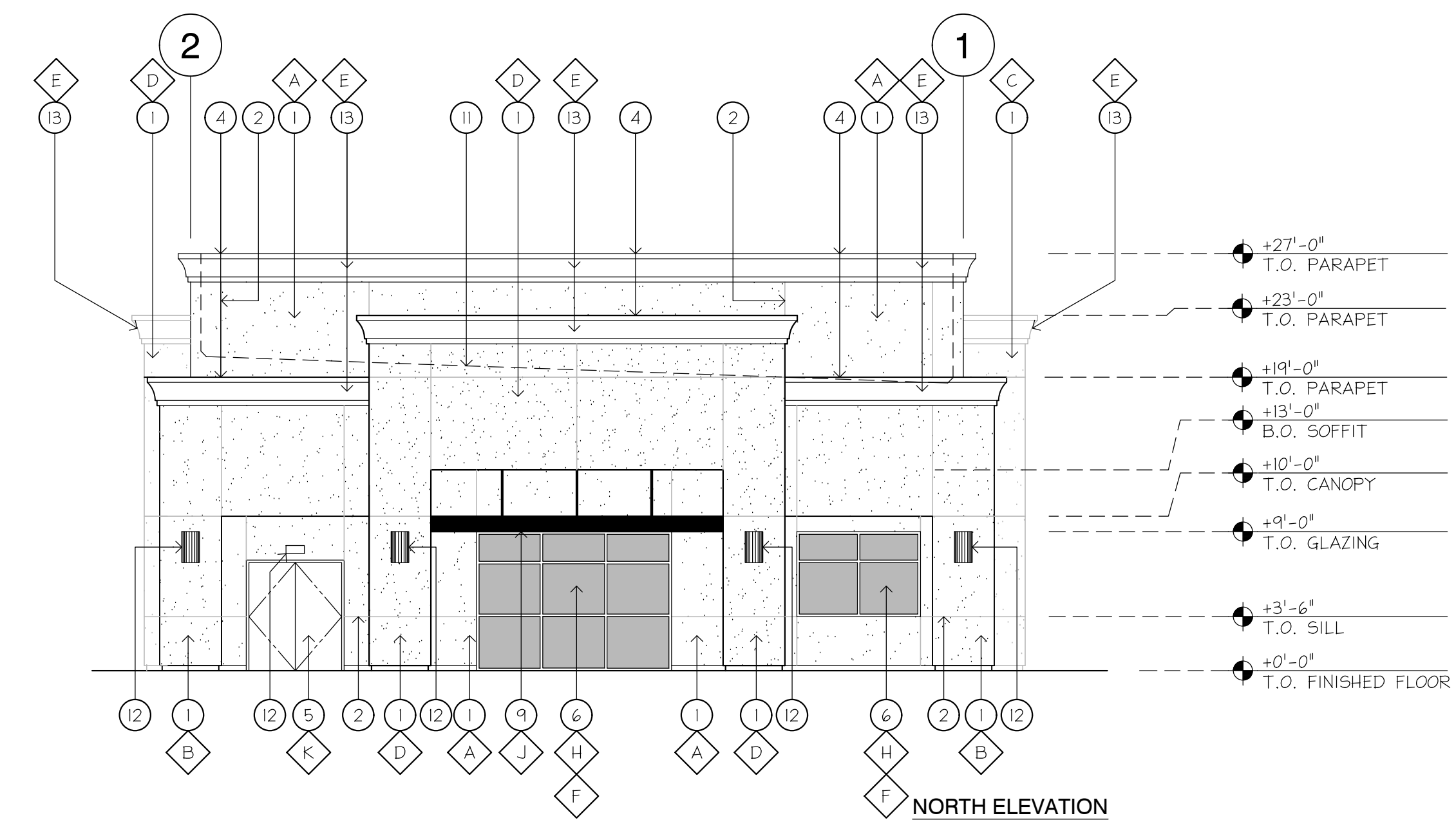
CENTERLINE
DESIGN, LLC

PLANNING - DESIGN - CONSULTING
1508 TOLLHOUSE ROAD, SUITE 'C'
CLOVIS, CALIFORNIA 93611
559-298-3860 (OFFICE)
559-298-3267 (FAX)

Comply with Section 15-1305 for facade design development standards. Verify compliance.



SOUTH ELEVATION



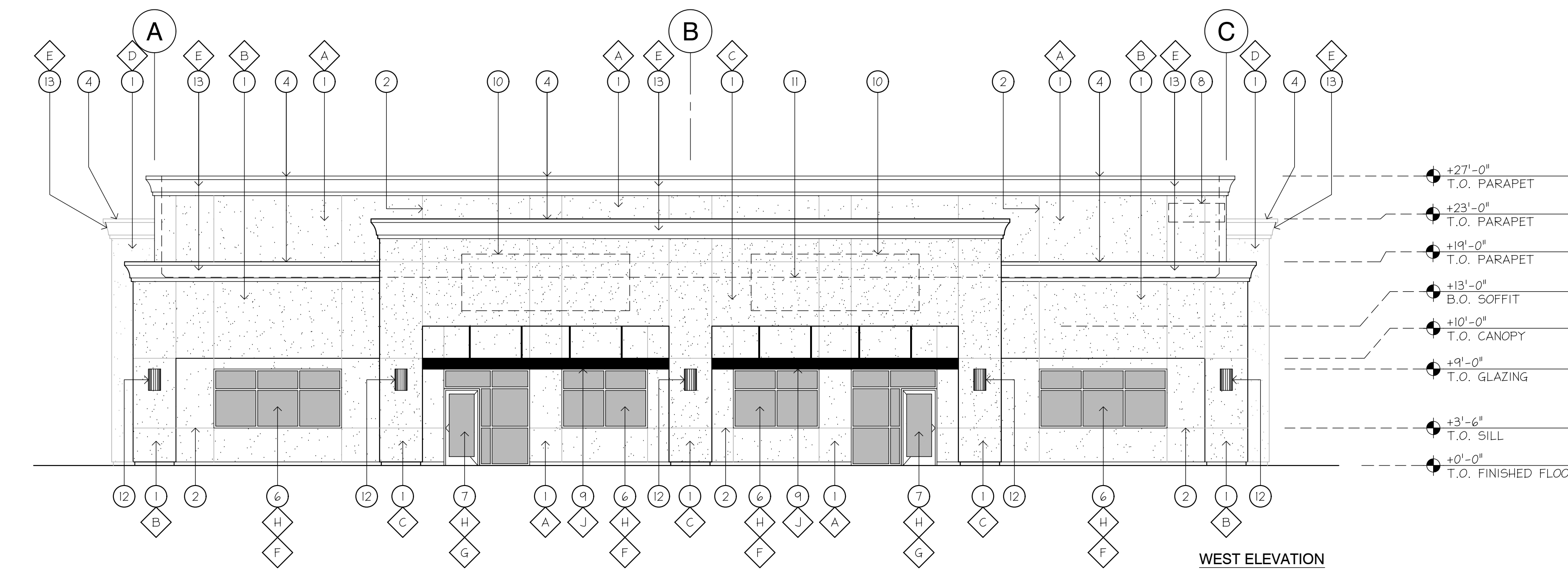
NORTH ELEVATION

- ### KEYED NOTES
- LOCATION OF OMEGA WALL STUCCO SYSTEM - SYSTEM COMPONENTS SHALL INCLUDE BUT NOT BE LIMITED TO AKROFLEX IM (EIFS WITH DRAINAGE) OVER AKROGUARD WATER-RESISTIVE COATING SYSTEM OR CODE-COMPLYING WATER-RESISTIVE BARRIER) - INSULATION BOARD (2" THICK) SHALL BE CORRUGATED AND MECHANICALLY FASTENED WITH A BASE COAT OF STYROGLUE TF - FINISH SHALL BE AKROFLEX OVER AKROFLEX REINFORCING MESH - REFER TO COLOR/MATERIAL LEGEND.
 - LOCATION OF VERTICAL/HORIZONTAL EXPANSION JOINT AND/OR REVEAL IN EIFS SYSTEM.
 - LOCATION OF GLAZING W/ BLACKOUT INSTALLED ON THE INSIDE FACE OF THE GLAZING - TYP.
 - LOCATION OF GCM PARAPET CAP FLASHING - PAINT 2-COATS ENAMEL TO MATCH COLOR OF FINISH MATERIAL DIRECTLY BELOW.
 - LOCATION OF HOLLOW METAL DOOR AND FRAME - PAINT (2) COAT ENAMEL TO MATCH ADJACENT WALL COLOR.
 - LOCATION OF DUAL PANE GLAZING SYSTEM - REFER TO COLOR/MATERIAL LEGEND FOR ADDITIONAL INFORMATION.
 - LOCATION OF STOREFRONT DOOR(S) - REFER TO DOOR SCHEDULE FOR ADDITIONAL INFORMATION.
 - LOCATION OF STREET ADDRESS NUMERALS LOCATED SO AS TO BE PLAINLY VISIBLE FROM THE STREET OR ROAD - LETTERS, NUMBERS, AND SYMBOLS SHALL BE A MINIMUM OF 12" HIGH, HAVE A 1" STROKE, BE REFLECTIVE, AND BE CONTRASTING WITH THE BACKGROUND COLOR OF THE BUILDING.
 - LOCATION OF EXTERIOR METAL CANOPY - REFER TO COLOR/MATERIAL LEGEND FOR ADDITIONAL INFORMATION.
 - POTENTIAL TENANT SIGNAGE LOCATION - PROVIDE SELF ADHERED FLASHING UNDER BUILDING PAPER TYPICAL THIS WALL FACE 12" BEYOND THE PERIMETER OF THE SIGN CONSTRUCTION.
 - DASHED LINE INDICATES APPROXIMATE TOP OF ROOFING (BEYOND).
 - LOCATION OF NEW SURFACE MOUNTED LIGHT FIXTURES.
 - LOCATION OF NEW EPS FOAM TRIM WITH COLORED EIFS FINISH - REFER TO COLOR/MATERIAL LEGEND FOR ADDITIONAL INFORMATION.

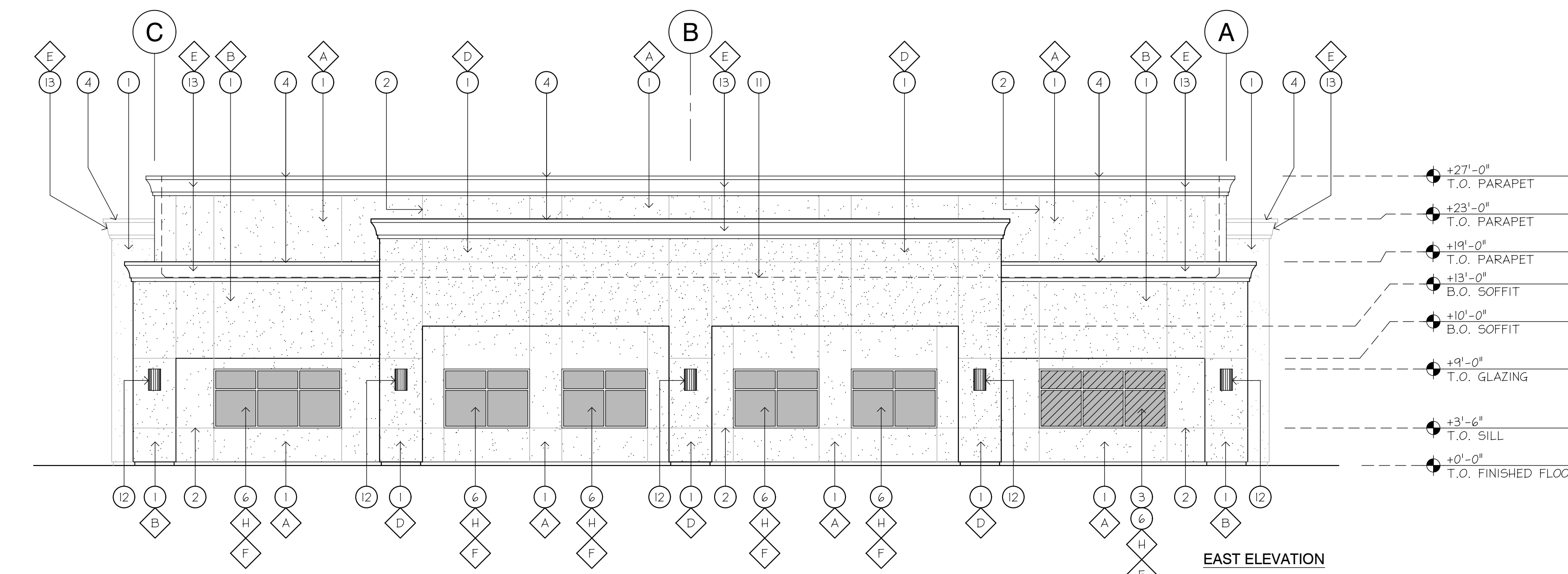
Signs, other than directional signs, if applicable, are not approved for installation as part of this special permit.
All proposed sign shall be submitted under a separate sign application.

COLOR / MATERIAL LEGEND

MATERIAL	FINISH	COLOR
A EIFS (BASE)	PAINTED	DUNN EDWARDS DEC754 QUICKSAND
B EIFS (FIELD)	PAINTED	DUNN EDWARDS DEC772 NAVAJO WHITE
C EIFS (ACCENT)	PAINTED	DUNN EDWARDS DEC235 NORTHGATE GREEN
D EIFS (ACCENT)	PAINTED	DUNN EDWARDS DEC739 GOLDEN GATE
E EIFS (ACCENT)	PAINTED	DUNN EDWARDS DEC718 MESA TAN
F GLAZING SYSTEM	FACTORY FINISH	DARK GRAY
G STOREFRONT DOOR	FACTORY FINISH	DARK BRONZE
H ALUMINUM STOREFRONT SYSTEM	FACTORY FINISH	DARK BRONZE
I METAL CANOPY	PAINTED	DARK BRONZE
J HOLLOW METAL DOOR	PAINTED	DUNN EDWARDS DEC754 QUICKSAND

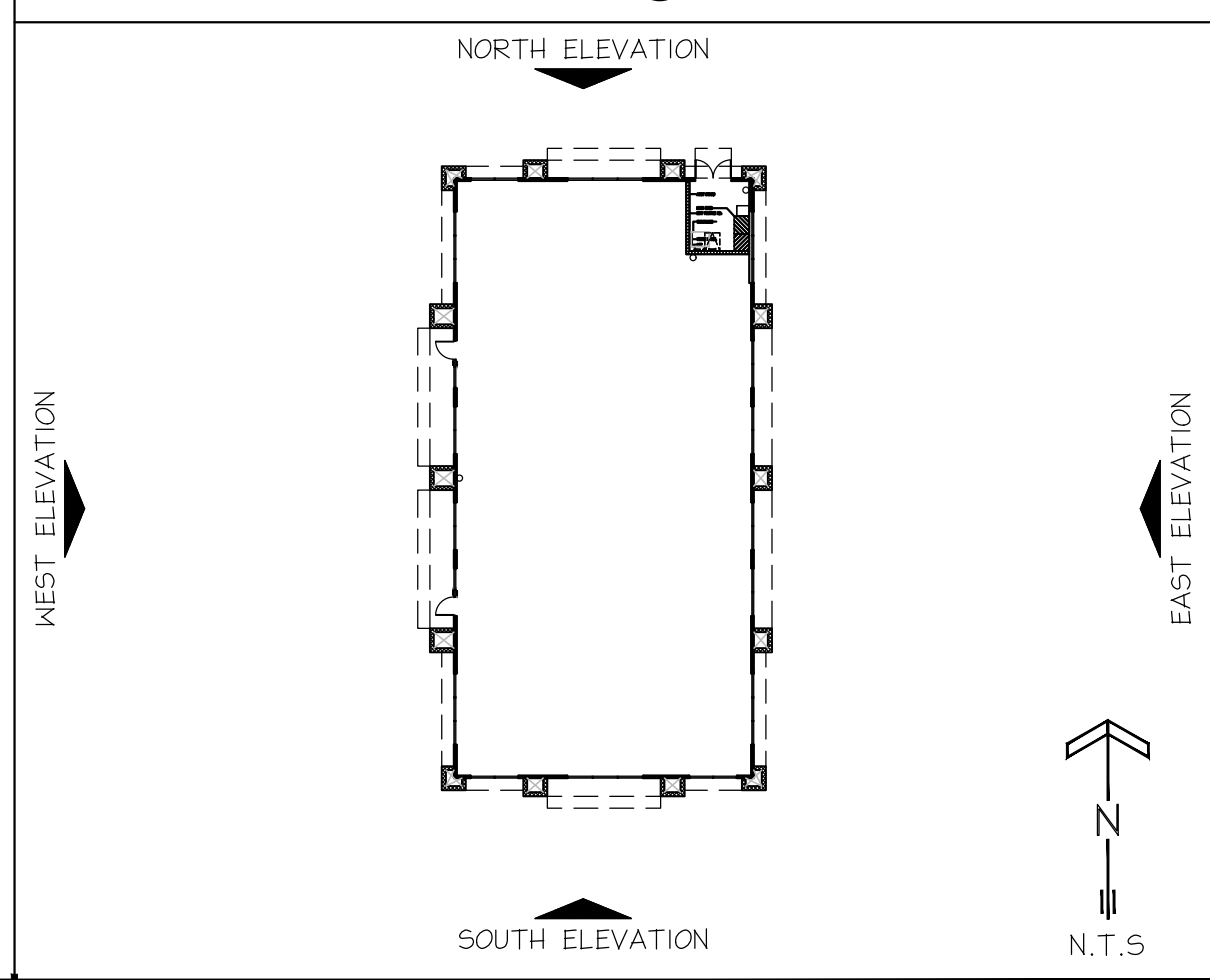


WEST ELEVATION



EAST ELEVATION

REFERENCE PLAN



APPL. NO. P23-00186 EXHIBIT E-2 DATE 03/01/2023
PLANNING REVIEW BY _____ DATE _____
TRAFFIC ENG. _____ DATE _____
APPROVED BY _____ DATE _____
CITY OF FRESNO DARM DEPT

PROJECT
PROPOSED BUILDING SHELL DEVELOPMENT FOR:
DDYS FIRST AND GETTYSBURG
3147 EAST GETTYSBURG AVENUE
FRESNO, CA. 93726

STATUS

Current Release Date
02-01-2023
Planning Submittal
01-17-2023
Plan Check Submittal
--

REVISIONS

IDENTIFICATION

Scale
1/8" = 1'-0"
Project Coordinator
BRYAN POK
Project No.
21-159
Sheet

ALL IDEAS, DESIGNS, AND PLANS ARE OWNED BY AND ARE PROPERTY OF CENTERLINE DESIGN, LLC AND/OR CONSULTANTS. THESE IDEAS, DESIGNS, AND PLANS ARE INSTRUMENTS OF PROFESSIONAL SERVICE AND ARE PROTECTED BY COPYRIGHT LAW, STATUTORY AND OTHER RESERVED RIGHTS INCLUDING COPYRIGHT. THESE IDEAS, DESIGNS, AND PLANS MAY NOT BE REPRODUCED OR USED FOR ANY PURPOSE WITHOUT THE WRITTEN CONSENT OF CENTERLINE DESIGN, LLC AND/OR CONSULTANTS.

FUTURE BUILDING EXTERIOR ELEVATIONS

A-3.1