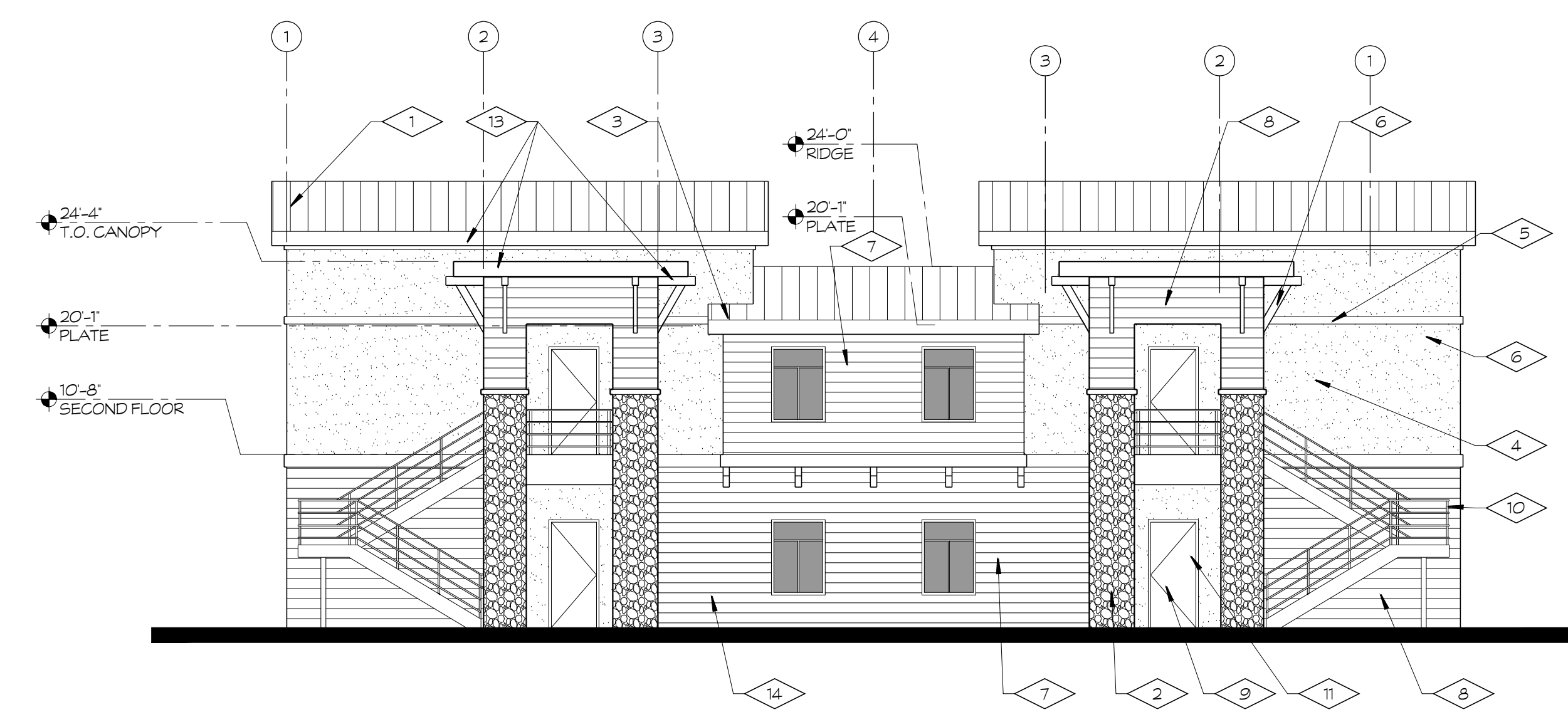




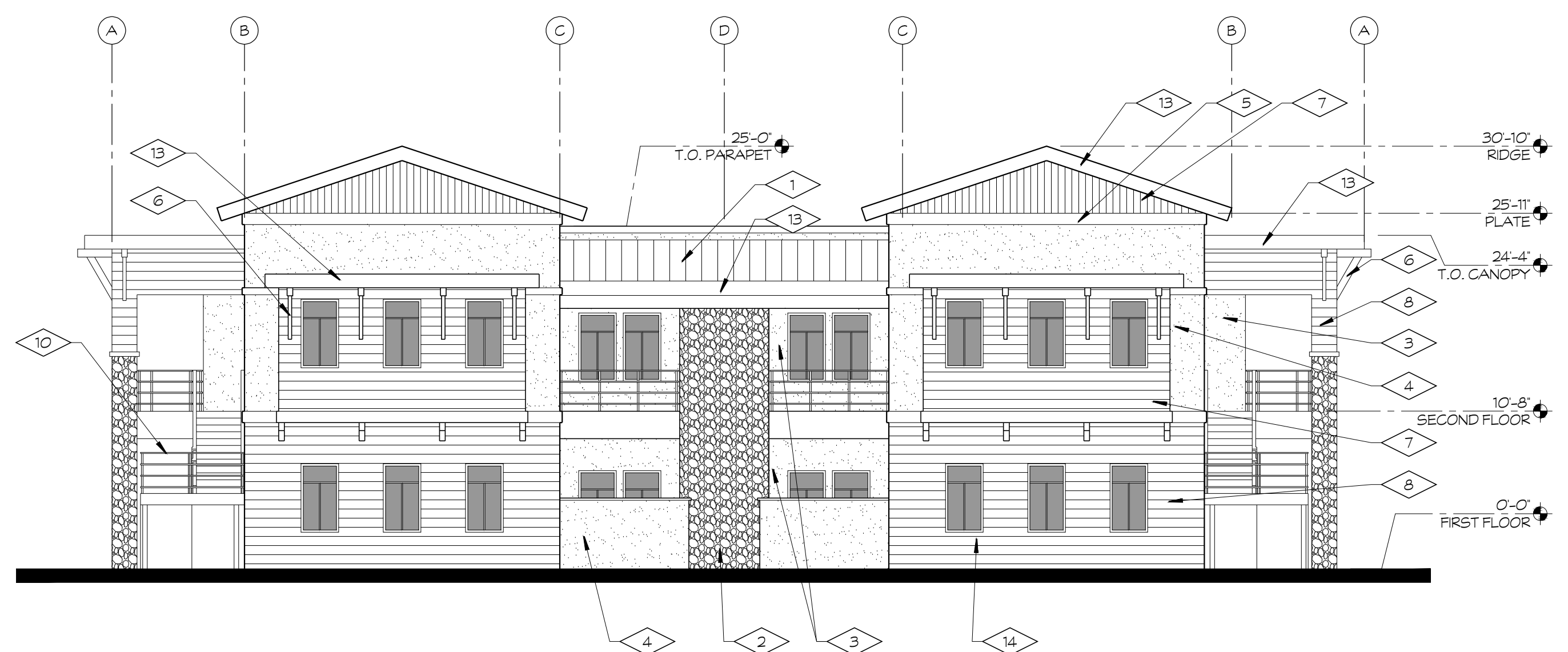
BUILDING A
FRONT ELEVATION

1/8" = 1'-0"



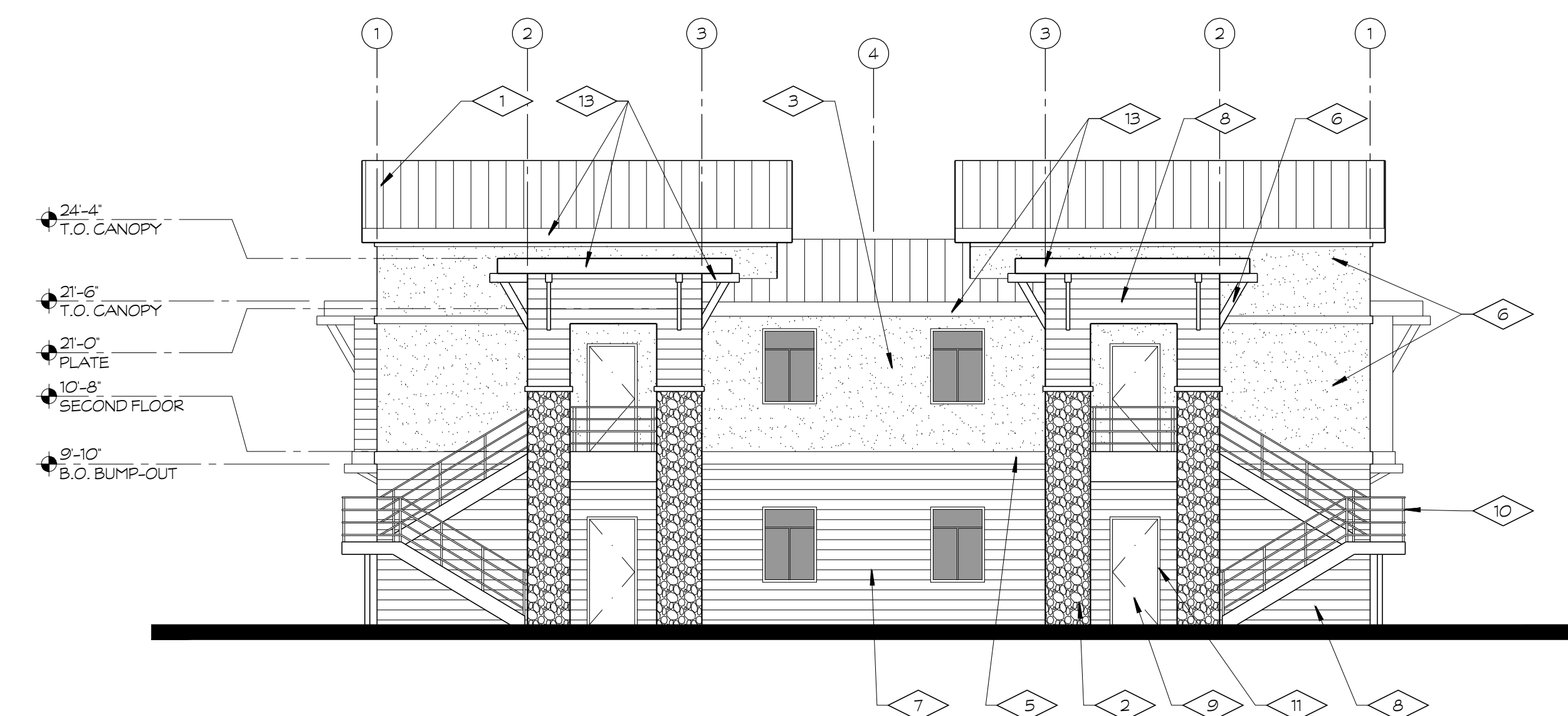
BUILDING A
SIDE ELEVATION

1/8" = 1'-0"



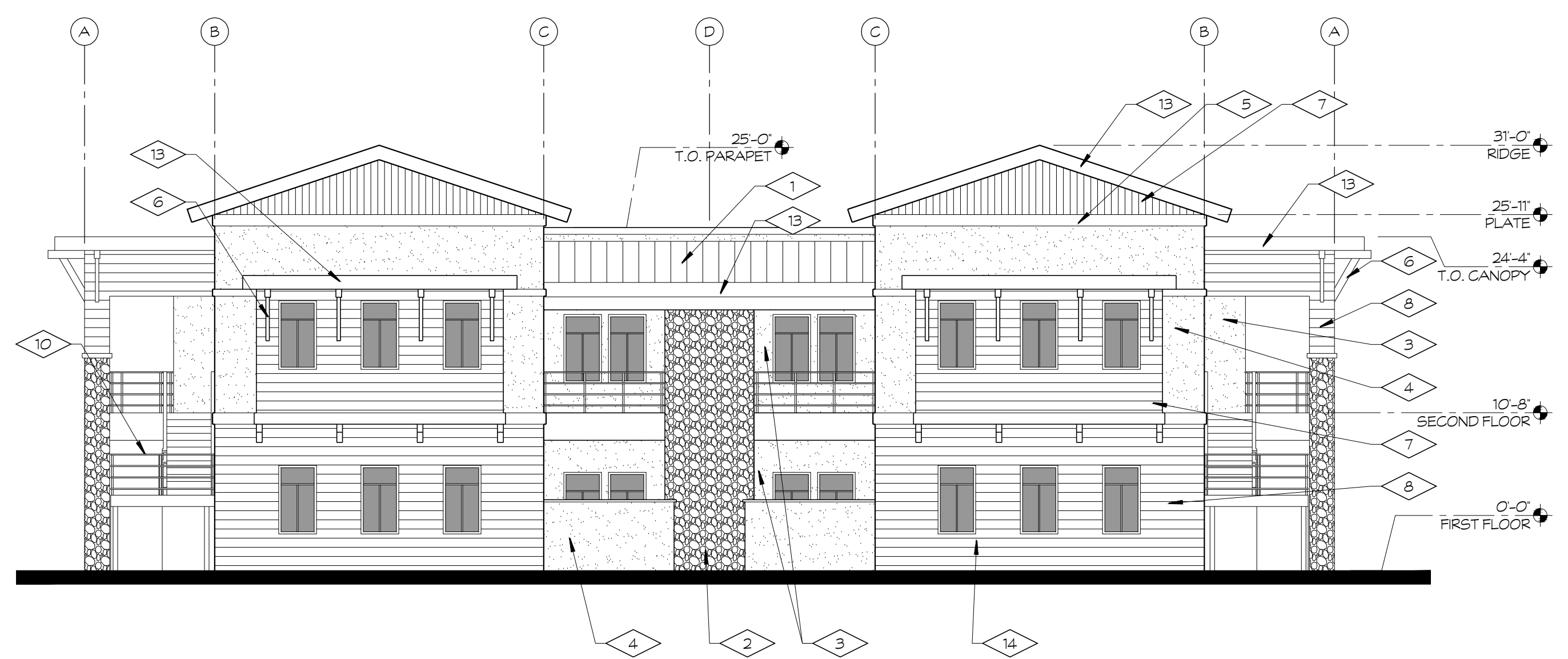
BUILDING B2
FRONT ELEVATION

1/8" = 1'-0"



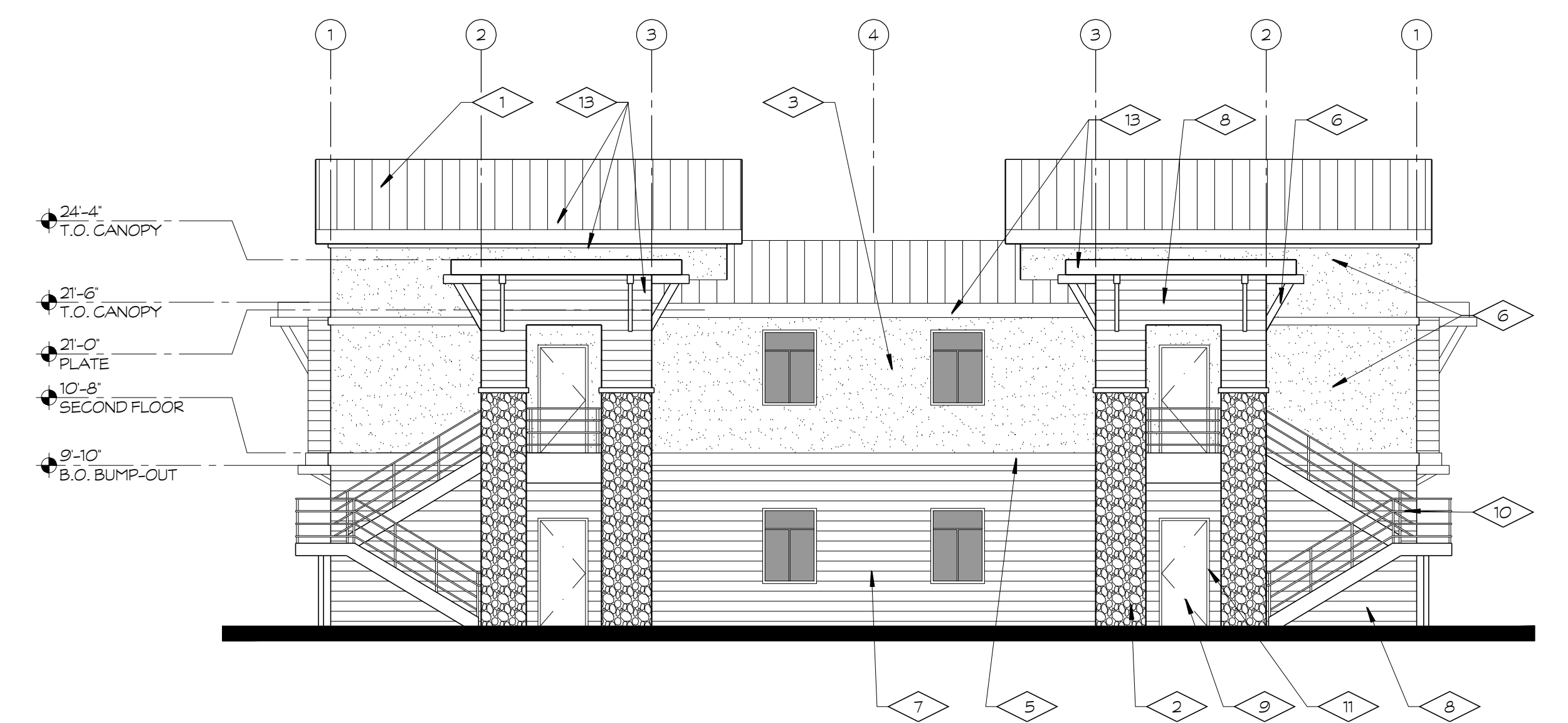
BUILDING B2
SIDE ELEVATION

1/8" = 1'-0"



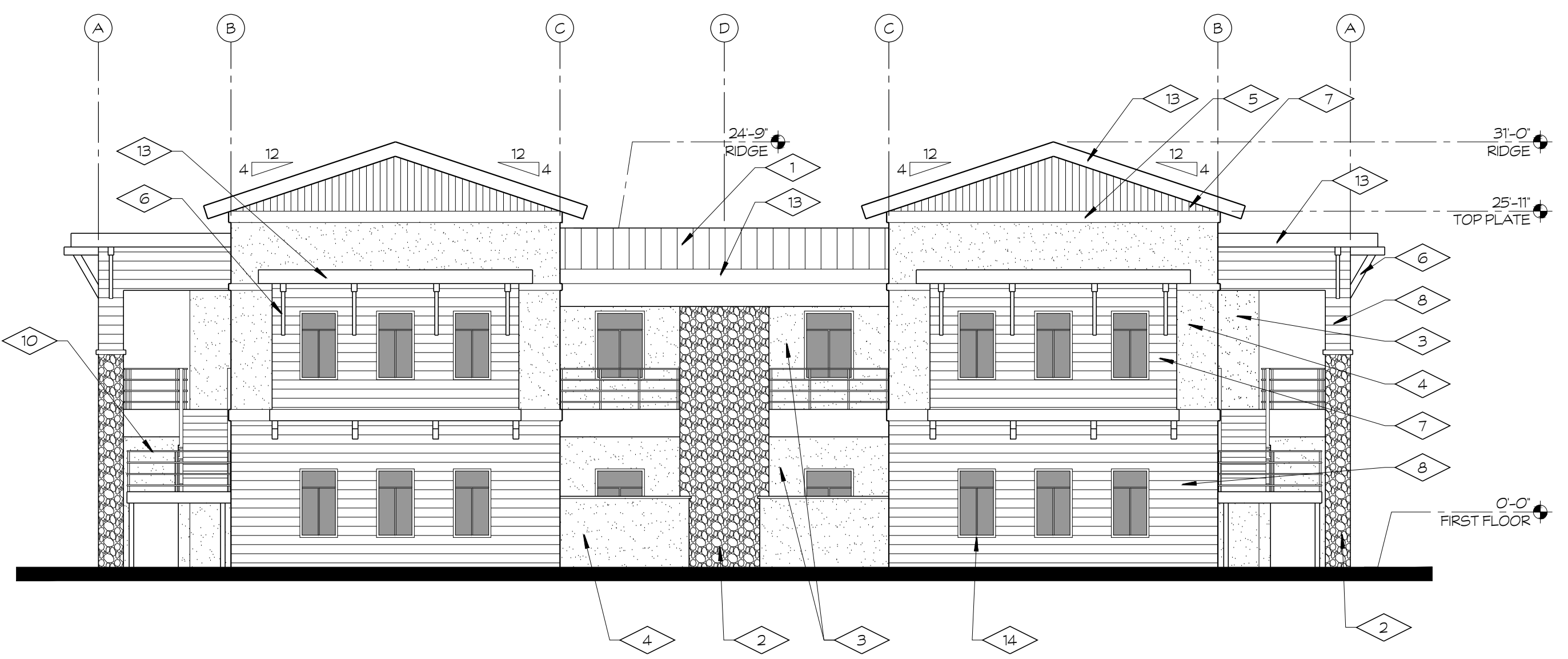
BUILDING B3
FRONT ELEVATION

1/8" = 1'-0"



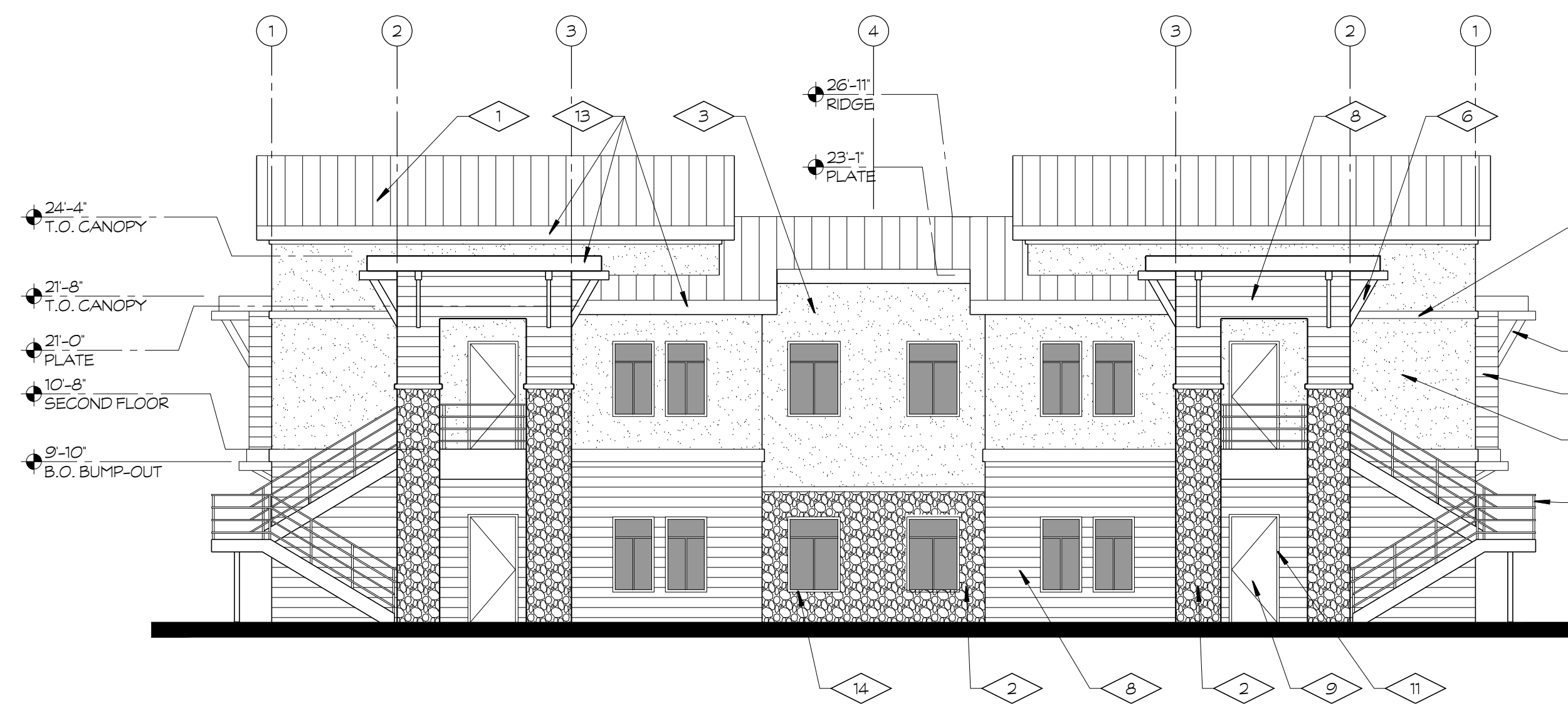
BUILDING B2
SIDE ELEVATION

1/8" = 1'-0"



BUILDING C
FRONT ELEVATION

1/8" = 1'-0"




BUILDING C
SIDE ELEVATION

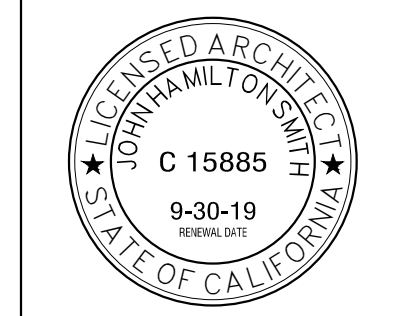
1/8" = 1'-0"

EXTERIOR FINISHES

	MATERIAL	DESCRIPTION/ COLOR
1	STANDING SEAM METAL ROOFING	GARLAND GADET GRAY
2	CAST STONE VENEER	ELDORADO STONE - EUROPEAN LEDGE GLAZIER
3	STUCCO, PAINTED	DUNN EDWARDS PAINT - DARK SEPA #DE6138
4	STUCCO, INTEGRAL STUCCO	BLUE EAGLE STUCCO - COLOR MATCH TO: BENJAMIN MOORE-REVERE FEWTER #HG-173
5	FOAM TRIM, PAINTED	BENJAMIN MOORE PAINT - DOVE WING #OC-18
6	PAINTED WOOD OUTRIGGER	DUNN EDWARDS PAINT - DARK SEPA #DE6138
7	PAINTED SIDING	BENJAMIN MOORE PAINT - DOVE WING #OC-18
8	PAINTED SIDING	BENJAMIN MOORE PAINT - CHELSEA GRAY #HC-168
9	METAL DOOR, PAINTED	SHERWIN WILLIAMS PAINT - PORPOISE #SW7047
10	METAL HANDRAILS, PAINTED	SHERWIN WILLIAMS PAINT - PORPOISE #SW7047
11	METAL DOOR FRAME, PAINTED	SHERWIN WILLIAMS PAINT - PORPOISE #SW7047
12	VENT TRIM, PAINTED	BENJAMIN MOORE PAINT - DOVE WING #OC-18
13	FASCIA	SHERWIN WILLIAMS PAINT - PORPOISE #SW7047
14	VINYL WINDOW	WHITE FRAME
15	STUCCO EXPANSION JOINT	PAINTED TO MATCH ADJACENT STUCCO
16	METAL GARAGE DOOR, PAINTED	BENJAMIN MOORE PAINT - DOVE WING #OC-18
17	METAL CARPORT, PAINTED	PAINTED TO MATCH BUILDING COLOR BENJAMIN MOORE PAINT - REVERE FEWTER #HG-172
18	APT. DOOR	FINISH TO BE SELECTED
19	DRINKING FOUNTAIN	SEE PLUMBING FIXTURE SCHEDULE
20	MECH. UNIT W/ SCREEN	SEE MECHANICAL PLANS FOR HVAC UNIT SEE DETAIL 18/A14 FOR SCREEN
21	GARAGE - EXTERIOR LIGHT	FIXTURE TO BE SELECTED BY OWNER
22	METAL DOORS/FRAMES	THAT ARE NOT APT DOORS WILL MATCH STUCCO



7780 NORTH PALM AVENUE - FRESNO, CALIFORNIA 93711
 T 559.448.8400 F 559.448.8407 www.simprbk.com



BULLARD - FIGARDEN APTS
 4299 W. BULLARD AVENUE (SEC BULLARD & FIGARDEN)
 FRESNO, CA 93722

No.	DATE	DESCRIPTION	No.	DATE	DESCRIPTION

EXTERIOR ELEVATIONS

JOHN SMITH	PROJECT ARCHITECT	19-12	PROJECT NUMBER	SHEET NUMBER
BRYAN SASSANO	DRAWN BY	AS NOTED	SCALE	A5.1
	CHECKED BY		DATE	