

Fresno Council of Governments

FY 2026/2027

Unmet Transit Needs Assessment

DRAFT



Fresno Council
of Governments

Prepared by:
Fresno Council of Governments
2035 Tulare Street, Ste. 201
Fresno, CA 93721
(559) 233-4148
<https://www.fresnocog.org>

TABLE OF CONTENTS

Memorandum	2
Definition of “Unmet Transit Needs” and “Needs That Are Reasonable To Meet”	5
Social Services Transportation Advisory Council (SSTAC)	7
FY2026-27 SSTAC Unmet Transit Needs Process.....	8
Comments and Feedback Received for the FY2026-2027 Unmet Transit Need Assessment.....	16
Discussion from SSTAC Relating to the Comments Received for the Unmet Transit Needs Assessment	52
Instructions and next steps for TTC/PAC pertaining to the FY2026-2027 UTN Assessment	53
Public Transportation Plan Summary and Recommendations by Jurisdiction.....	54
Appendix A - Demographic Information.....	65
Appendix B – Unmet Transit Needs Assessment Process.....	72
Exhibit A – SSTAC Membership List	74
Exhibit A-1 – List of Acronyms.....	75
Exhibit B – FY2026-27 Unmet Transit Needs Process Outreach Schedule	76
Exhibit B-1 – Unmet Transit Needs Request flyer, English	78
Exhibit B-2 – Unmet Transit Needs Request flyer, Spanish.....	79
Exhibit B-3 – Unmet Transit Needs Survey in English	80
Exhibit B-4 – Unmet Transit Needs Survey in other Languages	84
Exhibit B-5 – Unmet Transit Needs Assessment Mailing List Summary, FY2026-27	85
Exhibit B-6 – Unmet Transit Needs, Social Media Posts	86
Exhibit C – Information Gathering Meeting Attendance Lists	87
Exhibit D-1 – Public Noticing of the FY2026-27 UTN Public Hearing Order and Ad in English	90
Exhibit D-2 – Public Noticing of the FY2026-27 UTN Public Hearing Order and Ad in Spanish	92

LIST OF TABLES AND FIGURES

Table 1 - Available TDA-Local Transportation Funds for projects by Local Agencies, FY2026-27.....	4
Table 2 – Summary of In-Person and Virtual Public Outreach Events, FY2026-27	11
Table 3 – Summary of Comments Received by Jurisdiction, FY2026-27.....	16
Table 4 - Matrix of Public Comments Received, Operator Responses, and Determinations	17
Figure 1 - Fresno County Population Density Map	66
Table 5 – Total Population and Percent Change, Year 2025	67
Table 6 – Age and Income, Year 2020-2024	68
Table 7 – Disability Status by Age by Sex, Year 2024.....	69
Table 8 – Employment Status by Disability Status, Year 2024	69
Table 9 – Population of Driving Age in Fresno County, Year 2020-2024	70
Table 10 – Percent of Licensed Drivers of Driving Age, Population, Year 2020-2024	70
Table 11 – Occupied Household / Vehicles in Fresno County, Year 2020-2024	71

MEMORANDUM

DATE: June 25, 2026
TO: Fresno COG Policy Board and the General Public.
FROM: Robert Phipps, Executive Director
SUBJECT: FY2026-27 UNMET TRANSIT NEEDS ASSESSMENT

RECOMMENDATION

On June 4, 2026, as part of the Unmet Transit Needs (UTN) Assessment process, the Social Services Transit Advisory Committee (SSTAC) made the finding that there are 12 unmet transit needs, none of them being reasonable to meet within the County of Fresno.

TTC/PAC is being asked to approve the UTN assessment and make a finding that there are 12 unmet transit needs, none of them being reasonable to meet within the County of Fresno.

BACKGROUND

The Fresno Council of Governments, in its role as the Regional Transportation Planning Agency, administers claims for the Transportation Development Act (TDA). At the beginning of each fiscal year, the Fresno COG must determine the amount of TDA funds available from the TDA Local Transportation Fund (LTF) for allocation to local agencies within Fresno County. Allocations are made in four categories: bicycle and pedestrian facilities, social service transportation, regional transportation planning, and public transportation. In certain cases, funding from the public transportation category can be applied to local streets and roads in individual jurisdictions if a finding has been made that there are no unmet transit needs that are reasonable to meet within the jurisdiction; however, public transit must be given priority. As a result, prior to allocating LTF funds for any use other than public transit in the public transportation category, the Fresno COG must identify any unmet public transit needs that may exist in Fresno County that are reasonable to meet.

The Unmet Transit Needs Assessment process is conducted to identify any unmet transit needs and make any related findings.

DISCUSSION

On June 2, 2026, the Fresno Council of Governments (Fresno COG), the Regional Transportation Planning Agency (RTPA) for Fresno County held a legally noticed Public Hearing. The purpose of the hearing was to receive public testimony to determine if public transportation needs within Fresno County will be reasonably met in Fiscal Year (FY) 2026-2027 (July 1, 2026, through June 30, 2027), prior to approving LTF claims for local streets and roads. The time and place of the Public Hearing that was legally noticed is as follows:

Date: June 2, 2026
Time: 5:30 p.m.
Place: Fresno Council of Governments, Sequoia Room
2035 Tulare St., Suite 201
Fresno, California 93721-2004

The public hearing for the FY2026-27 Fresno COG Unmet Transit Needs Assessment took place on Tuesday, June 2, 2026, at 5:30 PM PST. The

[Placeholder for a description of the Public Hearing on June 2, 2026].

Transportation Development Act – Local Transportation Funds

Transportation Development Act (TDA) - Local Transportation Funds are derived from the state sales tax. One-quarter of a cent of the state sales tax is allocated to the Local Transportation Fund and may be used for transportation projects. In FY 2026-2027, the estimated Local Transportation Fund amount for Fresno County is \$60 million, of which \$183,047 is programmed for administration and audits. The remaining \$58,816,953 is programmed by formula for bicycle and pedestrian facilities, social service transportation planning, regional transportation planning and public transportation and streets and roads. Table 1 identifies the amount of projected funding by category that each local agency will receive in FY 2026-2027.

Of the Local Transportation Funds available for public transportation and streets and roads, priority must first be given to public transportation. The net difference may then be available for street and road projects.

DRAFT

Table 1
Available TDA - Local Transportation Funds
For Projects by Local Agencies FY 2026-2027

Agency	Bicycle & Pedestrian Facilities	Social Service Transportation	Regional Transportation Planning	Public Transportation	Total
Clovis	148,953	382,502	208,013	6,725,764	7,465,232
Coalinga	20,312		28,366	917,180	965,858
Firebaugh	10,052		14,038	453,902	477,992
Fowler	8,845		12,352	399,365	420,562
Fresno City	642,590		897,377	29,015,156	30,555,122
Huron	7,997		11,167	361,080	380,244
Kerman	20,228		28,249	913,378	961,855
Kingsburg	15,326		21,402	692,000	728,728
Mendota	14,662		20,476	662,049	697,187
Orange Cove	11,209		15,654	506,147	533,010
Parlier	16,899		23,599	763,050	803,548
Reedley	30,689		42,857	1,385,720	1,459,266
Sanger	31,190		43,556	1,408,326	1,483,072
San Joaquin	4,215		5,887	190,333	200,435
Selma	28,361		39,606	1,280,604	1,348,571
Fresno County	184,811		258,088	8,344,842	8,787,741
FCRTA		833,006			833,006
FAX		1,715,523			1,715,523
Total	1,196,339	2,931,031	1,670,687	54,018,896	59,816,953

Pursuant to Section 99401.5 of the California Public Utilities Code (PUC), Fresno COG, as the Regional Transportation Planning Agency, must make one of the following findings after holding a Public Hearing:

1. There are no unmet transit needs,
2. There are no unmet transit needs that are reasonable to meet, or
3. There are unmet needs, including needs that are reasonable to meet.

DEFINITION OF "UNMET TRANSIT NEEDS," AND "NEEDS THAT ARE REASONABLE TO MEET"

Section 99401.5(c) of the California Public Utilities Code specifies, "The transportation planning agency shall determine its definitions of the terms 'unmet transit needs' and 'reasonable to meet' for the purposes of this section which shall be documented by resolution or within the minutes of the agency."

The Council of Fresno County Governments (COFCG) defined these terms by Resolution 1990-15, adopted on June 28, 1990, as follows:

A. Unmet Transit Needs

"Those public transportation or specialized transportation services that are identified in the Regional Transportation Plan and/or documented through COFCG's Annual Unmet Transit Needs Public Hearing Process that have not been implemented or funded."

B. Reasonable to Meet

"Those public transportation services identified in the Regional Transportation Plan, or proposed amendment thereto, which meet the following criteria:

- (1) Services which, if implemented or funded, would not cause the responsible operator or service claimant to exceed its appropriations limitation as set forth by Proposition 4 (Gann Limit)
- (2) Services which, if implemented or funded, would not cause the responsible operator to incur expenditures in excess of the maximum amount of:
 - (a) Local Transportation Funds and State Transit Assistance Funds which may be available for such operators to claim.
 - (b) Urban Mass Transportation Administration (UMTA) funds or other support for public transportation services which are committed by Federal and/or State agencies by formula or tentative approval of specific grant requests; and
 - (c) Farebox and local funding in compliance with PUC Section 99268 et.seq.

The fact that an identified need cannot fully be met based on available resources shall not be the sole reason for finding a transit need is not reasonable to meet.

- (3) Services which, if implemented or funded, would result in the responsible operator or service claimant meeting the farebox recovery and local support requirements as set forth by PUC Section 99268 et. seq. Evaluation of existing operators shall be based on records provided to Council of Fresno County Governments by operators pursuant to the Transit Productivity Evaluation Process (PUC Section 99244)

Evaluation of proposed new service shall be based upon a feasibility analysis, which includes, but is not limited to:

- (a) Forecast of anticipated ridership if service is provided;
- (b) Estimate of capital and operating costs for the provision of such services;
- (c) Estimate of fares and local support in relation to estimated operating costs for providing such services; and
- (d) An estimated fare, which the Council of Fresno County Governments Board would determine to be sufficient to meet farebox recovery requirements but would not be so high it would pose a financial burden on transit dependent patrons.”

Note: Fresno Council of Governments (Fresno COG) was called Council of Fresno County Governments (COFCG) and the Federal Transit Administration (FTA) was called the Urban Mass Transportation Administration (UMTA) at the time Resolution 1990-15 was adopted.

DRAFT

SOCIAL SERVICES TRANSPORTATION ADVISORY COUNCIL (SSTAC)

The Fresno COG Policy Board established its Social Service Transportation Advisory Council (SSTAC) on May 26, 1988, to aid in its review of transit issues with an emphasis on the annual identification of transit needs within Fresno County. These needs include the needs of transit-dependent and transit disadvantaged persons, including the elderly, disabled, and persons of limited means. Fresno COG's establishment of this Advisory Council is consistent with State Law (SB 498, Chapter 673, 1987), which mandates both the purpose and minimum membership of this body. A list of SSTAC members is included with this report (Exhibit A).

The purpose of the SSTAC is to:

- (1) Annually participate in identification of transit needs (Unmet Transit Needs Public Hearing Process)
- (2) Review and recommend appropriate action by the Fresno COG for a jurisdiction which finds by resolution, that:
 - (a) There are no unmet transit needs;
 - (b) There are no unmet transit needs, which are not reasonable to meet; or
 - (c) There are unmet transit needs, which are reasonable to meet.
- (3) Advise Fresno COG on any other major transit issues, including the coordination and consolidation of specialized transportation services.

FY 2026-2027 SSTAC UNMET TRANSIT NEEDS PROCESS

The SSTAC has developed an annual process for soliciting unmet transit needs comments from the public. The timeline for the public notification process is contained within Exhibit B while the actual flyers themselves in English and Spanish are found as Exhibits B-1 and B-2, respectively.

Flyers along with comment forms in both English and Spanish were sent to 438 agencies and individuals interested in providing feedback on their public transportation needs within Fresno County. A discussion and summary of those who were sent the flyers is included in Exhibit B-3.

The electronic copy of the flyer and comment form was sent to 1,228 people on the Fresno COG mailing list. Respondents were requested to include the following information to assist staff in an initial evaluation of unmet transit needs:

- Where new service is needed, and where the potential trips would start and end;
- When, and how often trips would need to be scheduled; and
- A description of the individuals needing the service, including age group, financial constraints, and whether they have disabilities requiring special services.

Members of the community and stakeholders were also able to submit public comments and their transit needs several different ways. Online, an email address was set up at comments@fresnocog.org as well as at utn2026@publicinput.com. Additionally, a dedicated web page on the FCOG website at <https://www.fresnocog.org/unmet-transit-needs-assessment/> is maintained. There are also two separate pages set up on <https://www.publicinput.com>, the FCOG public outreach portal. The first page is the program page at <https://publicinput.com/2026-utn-survey/> that describes the overall program. The second page contains the link to the survey for the current cycle that contains the link to the survey can be found at <https://publicinput.com/unmet.transit.needs/>.

There are several additional ways that transit riders and stakeholders can submit their comments electronically. They can complete the survey in English via text message to Utn2026 to 73224 and in Spanish to Utn2026esp, also to 73224. Lastly, voice mail messages were able to be left at (855) 925-2801, extension 5248.

Transit riders and stakeholders were also able to send comments and feedback via US Mail to:

Brenda Thomas
Fresno Council of Governments
2035 Tulare Street, Ste. 201
Fresno, CA 93721

Public outreach of the current cycle of the UTN process consisted of seven events: including five scheduled in-person meetings, one ‘virtual’ meeting, and a mandatory public hearing. Of the five in-person events, three were held in urban areas while the remaining two were held in incorporated rural cities. The single online public outreach meeting was held online using ZOOM.

For the urban component of the UTN process, two in-person events were held in the City of Fresno while one in-person public meeting was held in the City of Clovis. For the meetings in the City of Fresno, the public meetings were held at public libraries, specifically the Betty Rodriguez Community Library at 3040 N. Cedar Avenue, Fresno, CA 93793, and the Sunnyside Regional Library at 5566 E. Kings Canyon Road, Fresno, CA 93727. The single urban public outreach meeting in Clovis took place at the Armstrong Transit Center at Landmark Square, in the Transit Training Room, located at 785 Third Street, Clovis, CA 93612. All these events were marketed through Fresno COG, Clovis Transit, and FAX marketing channels.

This year, as in previous years, outreach in rural Fresno County took place in two cities, Kerman and Reedley. Whereas last year, FCOG partnered with the Fresno County Housing Authority for public outreach in rural areas, this year, public outreach in rural areas were paired with workshops conducted by Fresno COG for the most recent update of the Regional Transportation Plan/Sustainable Communities Strategy (RTP/SCS). Since the RTP/SCS is updated every few years, it is likely that FCOG will resume holding rural public outreach events at Fresno Housing Authority locations.

Over the years, Fresno COG has invested heavily in developing relationships with community stakeholders. One way this has been implemented through the Unmet Needs Process is by maintaining an open door to opportunities to talk about the Unmet Transit Needs process. While additional meetings have been held in prior years, requests for additional meetings were not received this year.

In addition to in-person public meetings, public outreach activities for the FY2026-27 Unmet Transit Needs Assessment consisted of:

- A live ZOOM meeting.
- An online survey
- A toll-free phone number
- SMS/text surveys
- A dedicated email address
- Social media posts

ZOOM Meetings

The single ZOOM meeting was held on Saturday, February 28, 2026, at 11:00 AM. All meetings were well publicized in advance through the UTN Mailing lists. Specific details of each in-person ZOOM meeting are provided below.

Online Survey

In recent years, an online survey has become an increasingly important part of the Unmet Transit Needs public outreach process with surveys in both English and Spanish. This year is no different. It continues to be the channel through which Fresno COG receives the most responses.

The purpose of the online survey is to solicit specific perceived unmet transit needs within Fresno County. While conventional paper-based surveys were made available, an overwhelming majority of respondents provided their information through a survey created through PublicInput.com, a public outreach platform for Government agencies and consultants. The details of the survey are provided below.

In addition to managing the online survey for the UTN, the PublicInput.com platform was used to manage an 800-number, an SMS (text) number, comments from FCOG social media channels, and a dedicated email inbox. Stakeholders and prospective respondents could call or text (855) 925-2801, 24 hours a day, or send an email to comments@fresnocog.org and utn2026@publicinput.com to submit their comments

for the Unmet Transit Needs process. Comments and feedback received through these channels were received by the publicinput.com platform

The UTN cycle for FY2021-2022 was the first year to run an online survey and was done so in response to the suspension of in-person meetings because of COVID. Because of the overwhelming response, the decision was made to make the online survey an essential component of public outreach for all future cycles of the UTN Assessment.

DRAFT

Public Outreach Event Details

The minimum requirements to satisfy the public outreach requirements for the Unmet Transit Needs process is a public hearing that is publicly noticed thirty days prior to the hearing. The public hearing scheduled for Tuesday, June 2, 2026, satisfies this requirement.

In FY2026-27, in-person public outreach for the Unmet Transit Needs Assessment consisted of six in-person meetings, the details of which are below:

Table 2
Summary of In-Person and Virtual Public Outreach Events, FY2026-27

	Date	City	Jurisdiction
1.	Thursday, February 19, 2026	City of Reedley	Rural Fresno County
2.	Tuesday, February 24, 2026	City of Kerman	Rural Fresno County
3.	Saturday, February 28, 2026	Virtual meeting	Virtual meeting
4.	Tuesday, March 3, 2026	City of Fresno	Urban Fresno/Clovis MSA
5.	Wednesday, March 4, 2026	City of Fresno	Urban Fresno/Clovis MSA
6.	Thursday, March 5, 2026	City of Clovis	Urban Fresno/Clovis MSA

MSA = Metropolitan Statistical Area

Meeting Number 1 – Rural Fresno County In-Person Public Outreach Meeting: Thursday, February 19, 2026, in the City of Reedley

The first in-person public meeting took place at the City of Reedley Planning Commission meeting at Reedley City Hall in rural Fresno County, on Tuesday, February 19, 2026, at 5:30 PM PST, in the City of Reedley, California. Public outreach in the rural areas for this year’s Unmet Transit Needs process was paired with outreach for the Regional Transportation Plan / Sustainable Community Strategy (RTP / SCS).

Fresno County, being in a non-attainment area for federal air quality standards, must update its RTP/SCS every four years. As with the UTN process, public outreach is also an important part of the RTP/SCS.

The meeting was held at the RTP/SCS presentation meeting at the Reedley Planning Commission located at:

Thursday, February 19, 2026, at 5:30 – 6:30 PM

Presence at the FCOG RTP/SCS Workshop at the Reedley Planning Commission Meeting
845 G. Street,
Reedley, CA 93654

The people present at this meeting included:

- Harold Sobrado, Fresno COG and FAX
- Paul Herman, Fresno COG
- Santosh Bhattari, Fresno COG
- Nick Chin, Clovis Transit
- Rosemary Luzania, Chair, Reedley Planning Commission
- Patrick Turner, Vice-Chair, Reedley Planning Commission
- June Bracamontes, Reedley Planning Commission
- Rob Ledington, Reedley Planning Commission

- Harry Valencia, Reedley Planning Commission

This year, public outreach meetings in rural Fresno County were paired with RTP / SCS meetings in Reedley and Kerman, California. This meeting consisted of Fresno COG staff, specifically, Paul Herman and Santosh Bhattari making a 25-minute presentation to the City of Reedley Planning Commission about the preferred growth scenario for the Sustainable Communities Strategy. At the end of the meeting, Harold Sobrado was given the opportunity to address the Planning Commission and members of the public. He provided the commission and members of the public with a description of the program, the definition of an unmet transit need, and asked if there were any unmet transit needs to document with the unmet transit needs process.

Meeting Number 2 – Rural Fresno County In-Person Public Outreach Meeting: Tuesday, February 24, 2026, in the City of Kerman

The second in-person public meeting took place in rural Fresno County, specifically in Kerman, California on Tuesday, February 24, 2026, between 5:30 – 6:30 PM, at the RTP/SCS presentation to the Kerman Planning Commission. The details are as follows

Tuesday, February 24, 2026, at 5:30 – 6:30 PM

Presence at the FCOG RTP/SCS Workshop at the Reedley Planning Commission Meeting at the Kerman Community Teen Center
15101 W. Kearney Blvd.,
Kerman, CA 93630

The people present at this meeting were:

- Harold Sobrado, Fresno COG and FAX
- Brenda Thomas, Fresno COG
- Janelle Del Campo, Fresno County Rural Transit Agency
- Nick Chin, Clovis Transit
- Paul Herman, Fresno COG
- Santosh Bhattari, Fresno COG
- John Janson, City of Kerman

As with the meeting in Reedley the night before, the meeting in Kerman was also paired with a public outreach meeting for the RTP / SCS. However, this meeting was not for the Planning Commission or any other group. It was for the public.

The meeting started with a presentation by Paul Herman and Santosh Bhattari talking about the preferred scenario for the Sustainable Communities Strategy. Their share of the meeting lasted about 40 minutes. At the end of the first presentation, Harold was given the opportunity to address the audience. As with the night before, Harold gave the group an overview of the Unmet Transit Needs process, including the importance of comments to the process. The floor was then opened to receive questions. No questions were received.

No transit riders or members of the public attended this event. This event concluded at 6:30 pm.

Meeting Number 3 - Virtual Public Outreach Meeting: Saturday, February 28, 2026 at 11:00 AM, Online

The third public outreach meeting took place online on ZOOM on Saturday, February 28, 2026, at 11:00 AM PST. The meeting was staffed by Harold Sobrado. There was no participation from members of the public or stakeholders in this meeting. Harold remained in the online meeting room until 11:50 AM to account for late participants.

Meeting Number 4 – Urban Fresno/Clovis Metropolitan Area In-Person Public Outreach Meeting: Tuesday, March 3, 2026, at 5:30 PM in the City of Fresno

The fourth public outreach meeting took place at the Betty Rodriguez Community Library meeting room in the City of Fresno on Tuesday, March 3, 2026, starting at 5:30 PM. The details are as follows:

Tuesday, March 3, 2026, 5:30 – 6:30 PM
Betty Rodriguez Community Library Meeting Room
3040 N. Cedar Ave.
Fresno, CA 93703

The people present at this meeting include:

- Harold Sobrado, FAX and FCOG
- Ofelia Abundez, Clovis Transit

Harold Sobrado was first to arrive, allowing sufficient time to set up the meeting. He was joined a short time later by Ofelia Abundez, a business analyst with Clovis Transit. Harold and Ofelia waited for an hour for prospective attendees before concluding the meeting at 6:30 PM PST.

Meeting Number 5 – Urban Fresno/Clovis Metropolitan Area In-Person Public Outreach Meeting: Wednesday, March 4, 2026, at 5:30 PM, in the City of Fresno

The fifth public outreach meeting and the second in the Fresno/Clovis Metropolitan Area took place at the Sunnyside Regional Library Community Center Conference Room on Wednesday, March 4, 2026, at 5:30 PM. The details are as follows:

Wednesday, March 4, 2026, 5:30 – 6:30 PM
Sunnyside Regional Library, Community Center Conference Room
5566 E. Kings Canyon Road
Fresno, CA 93727

This was the second in-person public outreach meeting in the City of Fresno within the Fresno/Clovis Metropolitan area. It was attended by:

- Harold Sobrado, FAX and FCOG
- Ofelia Obundez, Clovis Transit
- Greg Barfield, FAX

Representing Clovis Transit at the meeting, Ofelia is a business analyst with the transit agency. She arrived at 5:35 PM PST. Greg Barfield, Executive Director of Fresno Area Express arrived at 5:50 PM. The meeting concluded at 6:30 PM.

Meeting Number 6 – Urban Fresno/Clovis Metropolitan Area In-Person Public Outreach Meeting: Thursday, March 5, 2026, at 5:30 PM, in the City of Clovis

This meeting was the sixth in-person public outreach meeting, the third in the Fresno/Clovis Metropolitan Area, and the first in the City of Clovis. It was held at the Clovis Transit Center, at 785 3rd Street, in Clovis, California 93612, on Thursday, March 5, 2026, at 5:30 PM. The details are as follows:

Thursday, March 5, 2026, 5:30 – 6:30 PM
Clovis Transit Center
785 3rd Street
Clovis, CA 93612

This meeting was attended by:

- Jeff Long, FAX and FCOG
- Nick Chin, Clovis Transit

Jeff Long from FAX and FCOG staffed this meeting in place of Harold Sobrado. Jeff was joined at this meeting by Nick Chin, Operations Manager with Clovis Transit. As with prior in-person public outreach events in this cycle of the UTN, no transit riders or members of the public attended this event. The meeting concluded at 6:30 pm.

Public Hearing, Tuesday, June 2, 2026 at 5:30 PM, at:

The final component of the FY2026-27 Public Outreach process was a publicly noticed hearing that took place Tuesday, June 2, 2026, at 5:30 PM. The meeting began at 5:3x PM PST

[Placeholder for the summary of the rescheduled Unmet Transit Needs public hearing]

Comments about Participation in In-Person Public Outreach Events in the Current Cycle of the UTN.

In the FY2020-2021 cycle of the Unmet Transit Needs Assessment, COVID drove all public outreach online. Participation in in-person public outreach events has not returned to pre-COVID levels. This is particularly apparent in this year's cycle where there has not been any public participation in several of the in-person events. The most attended "in-person" public outreach events were the rural outreach events paired with the RTP/SCS activities in Kerman and Reedley.

COMMENTS AND FEEDBACK RECEIVED FOR THE FY 2026-2027 UNMET TRANSIT NEEDS PROCESS

Table 3 below contains the table of comments received by transit agency while table 4 contains the full list of comments received and transit agency responses for this cycle. All the comments received were through the online survey at www.publicinput.com/unmettransitneeds/. As of this writing, no additional comments were received by mail, or electronically. The Public Hearing took place on June 2, 2026 with the comments received added to the list below.

Figure 1 includes the public comments received, the operator response, whether the comment is an unmet transit need, and whether it is reasonable to meet. In the Unmet Need column, “N/A” signifies “Not Applicable.” In the Reasonable to Meet column, “N/A” signifies either “Not Applicable” in cases where sufficient information or analysis is not yet available to make a determination.

To date, 73 comments have been received, four of which are duplicative. Of the comments received, twelve were found to meet the definition of an ‘unmet transit need’, that are NOT reasonable to meet. These are items numbers 9, 12, 13, 14, 17, 23, 34, 35, 43, 44, 59 and 62, on the table below. Items numbered 12, 13, and 14 are mostly alike in that they all reference transit service to the Juvenile Justice Campus. Items 9, 43, 59, and 62 are assigned to FAX, while items 12, 13, 14, and 35 are assigned to FCRTA and 35 is assigned to Clovis Transit. The remaining comments are shared across transit agencies, specifically: 17 is assigned to ‘Clovis & FCRTA’, 23 is ‘FAX & FCRTA’, and 44 are ‘FAX, Clovis Transit, and FCRTA’. Of what remains, there are 49 comments not meeting the definition of an unmet transit need and 12 comments that are not applicable.

Unmet needs are identified with a ‘Y’ in the fifth column, titled “Unmet Need? (Yes, No, N/A)”. Comments received in previous cycles of the Unmet Transit Needs Assessment are identified with a “Y” in the seventh, and last column, titled “Previously Recorded Comment (Yes, No).”

The number of comments for each transit agency, FCOG, and the combination of transit agencies received are as follows:

Table 3
Comments Received by Jurisdiction, FY2026-27

Jurisdiction	Item Number in the Matrix in Table 1
FAX	1,3,4,5,8,9,11,15,16,18,19,20,22,26,28,31,36,37,38,40,41,43,45,57,58,59,60,62
FCRTA	2,6,12,13,14,27,29,33,35,39,55
Clovis Transit, FAX, and FCRTA	10,44,52,53,56,69
Clovis Transit	30,34,49,51
Clovis Transit and FAX	21,47,67,72
Not Applicable	7,42,46,48
Clovis Transit and FCRTA	17,68
FAX and FCRTA	23,25
FAX and FCOG	61

The comments received, transit agency responses, and determination are in Figure 1, below.

Note: Public Comments shown below are included as verbatim.

Table 4
Matrix of Comments Received, Operator Responses, and Determinations

	RESP. PARTY	FY26 UTN COMMENTS RECEIVED	TRANSIT AGENCY RESPONSE	UNMET TRANSIT NEED? (Yes, No, N/A)	REASON-ABLE TO MEET (Yes, No)	PREVIOUSLY RECORDED RESPONSE (Yes, No)
1	FAX	[Other needs/suggestions — Q8] Make actual dedicated bus lanes. Our BRT is not a real BRT. People who taken public transit deserve to have quality service. I would take public transportation if it was actually heavily invested in.	Your comment is noted, thank you.	No	No	Yes
2	FCRTA	[Places/destinations — Q4] To doctor visits, its getting harder for me to drive and my sister and her husband usually drives me. But they're older than me and it's hard for them too. [Times needed — Q6] Around 8 am to 4 pm. Depends on my appointment. [Other needs/suggestions — Q8] I'm not really sure which service we have in Kingsburg, but there is one.	Thank you for your comments. FCRTA provides public transit service and is not a medical transportation provider. FCRTA currently provides the Rural Transit service which is for lifeline services such as doctor appointments. This is provided on a reservation basis by calling 1-855-612-5184. FCRTA provides public transit service in the City of Kingsburg which includes both fixed route and demand response services.	No	No	Yes
3	FAX	[Other needs/suggestions — Q8] inner city train transit routes similar to bus routes, except faster time frames for traveling from point A to point B	Thank you for your comment. Fresno Council of Governments (FCOG) is in the early stages of assessing feasibility for a light rail transit system in the Fresno-Clovis Metropolitan	N/A	No	No

	RESP. PARTY	FY26 UTN COMMENTS RECEIVED	TRANSIT AGENCY RESPONSE	UNMET TRANSIT NEED? (Yes, No, N/A)	REASON-ABLE TO MEET (Yes, No)	PREVIOUSLY RECORDED RESPONSE (Yes, No)
			area.			
4	FAX	[Places/destinations — Q4] The street in Fresno, CA Gettysburg Ave. It had No Bus services on it. [Times needed — Q6] 10am to 5pm	Thank you for your comment. Bus service is available on Shaw and Ashlan. Both streets are within half a mile of Gettysburg. This is a distance that is deemed appropriate per transit industry standards.	No	No	Yes
5	FAX	[Places/destinations — Q4] I would like to reach the airport more directly, not by riding FAX 45 min., riding south of the airport then eventually arriving across the street. Also, returning to my home by FAX requires two buses.[Times needed — Q6] Early mornings, evenings after 7 pm. Schedule should coordinate with the airport arrivals and departures.[Other needs/suggestions — Q8] Considering the population of the City of Fresno, FAX routes should be reassessed to provide typical grid coverage of the city, modifying the circuitous routes that served a city with fewer residents.	Thank you for your comment. Yosemite International Airport is serviced by routes 26 and 39 at approximately 30 minute frequencies weekdays from approximately between 6:00 AM and 10 PM, and weekends, between approximately 7:00 AM and 7:00 PM. Route 39 is planned for 15 minute frequencies weekdays from approximately 6:00 AM to 6:00 PM.	No	No	Yes

	RESP. PARTY	FY26 UTN COMMENTS RECEIVED	TRANSIT AGENCY RESPONSE	UNMET TRANSIT NEED? (Yes, No, N/A)	REASON-ABLE TO MEET (Yes, No)	PREVIOUSLY RECORDED RESPONSE (Yes, No)
6	FCRTA	[Places/destinations — Q4] Selma [Times needed — Q6] Mornings and evenings	FCRTA provides public transit service to the rural areas in Fresno County which includes fixed route and demand response services in the City of Selma. The demand response service is provided on a reservation basis by calling 1-855-612-5184. FCRTA does not provide evening services due to low ridership and farebox requirements.	No	No	Yes
7	Not applicable	[Other needs/suggestions — Q8] Cargadores Electricos de Alta velocidad gratuitos los que segun tienen aqui en la ciudad no sirven y solo hay 1 porque el otro es para los empleados -- EV chargers throughout the City don't work. Additionally, there is only one available for the public because the other one is for employees.	Your comment is noted, thank you.	No	No	No
8	FAX	[Places/destinations — Q4] An actual stop at Woodward Park.[Times needed — Q6] Anytime	Thank you for your comment. Woodward Park is serviced by FAX BRT Route 1 at the stop at N. Friant and Fresno Street. This stop is approximately .25 mile of Woodward Park.	No	No	Yes

	RESP. PARTY	FY26 UTN COMMENTS RECEIVED	TRANSIT AGENCY RESPONSE	UNMET TRANSIT NEED? (Yes, No, N/A)	REASON-ABLE TO MEET (Yes, No)	PREVIOUSLY RECORDED RESPONSE (Yes, No)
9	FAX	<p>[Places/destinations — Q4] The neighborhoods in West Fresno past Brawley. Polk and McKinley.</p> <p>[Times needed — Q6] The regular schedule?</p>	<p>Thank you for your comment. Based on current development patterns of the areas west of SR99, efficient and effective transit service is difficult. Based on the West Area Specific Plan, FAX will be conducting a study to improve transit service in this area.</p>	Yes	No	Yes
10	FAX, FCRTA and Clovis Transit	<p>[Places/destinations — Q4] Woodward Park, cherry auction flea market; Clovis after 3pm on weekends</p> <p>[Times needed — Q6] Anytime</p> <p>[Other needs/suggestions — Q8] I wish the Clovis stageline had a better schedule system, the wait times are always unpredictable, the text messaging system for estimating arrival times are rarely accurate, and waiting 30 minutes for another bus to come is always a pain. I wish the Clovis buses were tracked on Google maps the same way FAX is, so at least we could plan when to wait for the bus.</p>	<p>Thank you for your comment. Woodward Park is serviced by FAX BRT Route 1 at the stop at N. Friant and Fresno Street. This stop is approximately .25 mile mile of Woodward Park.</p> <p>Cherry Ave Flea Market is outside of Fresno City limits and the FAX service area.</p> <p>FCRTA currently operates the Coalinga Intercity Service M-S and stops in Easton. Additionally, ridership demand to the Cherry auction would not be sufficient to warrant service to this destination.</p>	No	No	Yes

	RESP. PARTY	FY26 UTN COMMENTS RECEIVED	TRANSIT AGENCY RESPONSE	UNMET TRANSIT NEED? (Yes, No, N/A)	REASON-ABLE TO MEET (Yes, No)	PREVIOUSLY RECORDED RESPONSE (Yes, No)
11	FAX	[Places/destinations — Q4] Cherry flea market, and bigger busses for route 38 and 1, overcrowded and lots of the times the 38 skips my stop due to overcrowded.[Times needed — Q6] Any time up till 9[Other needs/suggestions — Q8] More bus frequency on route 26 lost of times super behind schedule	Thank you for your comment. Cherry Ave Flea Market is outside of Fresno City limits and the FAX service area.Routes 1 and 38 are on 10 and 15 minute frequencies to address overcrowding.	No	No	Yes
12	FCRTA	[Places/destinations — Q4] The juvenile courthouse on 99 and American [Times needed — Q6] Thursdays and Fridays: 7:30am to 7:30pm to match up with times court, attorneys, and other offices are open plus visit times at juvenile hall M, T, W, Sat, Sun: 7:30am to 6:00pm to match office hours/court hours and visitation times at juvenile hall The juvenile court and juvenile hall next to it is currently not served by any bus line.	Thank you for your comment. FCRTA previously operated the Juvenile Justice Campus Transit on a demonstration basis, and the service was discontinued due to low ridership and not meeting farebox requirements.	Yes	No	No

	RESP. PARTY	FY26 UTN COMMENTS RECEIVED	TRANSIT AGENCY RESPONSE	UNMET TRANSIT NEED? (Yes, No, N/A)	REASON-ABLE TO MEET (Yes, No)	PREV-IOUSLY RECORDED RESPONSE (Yes, No)
13	FCRTA	[Places/destinations — Q4] Juvenile Justice Center on 99/American. [Times needed — Q6] 7am to 7:30 PM [Other needs/suggestions — Q8] A digital tap pay system. Cards that can withstand all weather conditions. Rapid Transit for Bus line 32. Benches at every stop.	FCRTA previously operated the Juvenile Justice Campus Transit on a demonstration basis, and the service was discontinued due to low ridership and not meeting farebox requirements. FAX is continuing to assess the feasibility of Tap-to-pay and mobile fare payment technologies	Yes	No	No
14	FCRTA	[Places/destinations — Q4] The Juvenile Justice Campus on American and 99. [Times needed — Q6] 7am - 4pm	Thank you for your comment. FCRTA previously operated the Juvenile Justice Campus Transit on a demonstration basis, and the service was discontinued due to low ridership and not meeting farebox requirements.	Yes	No	No
15	FAX	[Other needs/suggestions — Q8] Tap to pay	Thank you for your comment. FAX is continuing to assess the feasibility of Tap-to-pay and mobile fare payment technologies.	No	No	Yes
16	FAX	[Places/destinations — Q4] transportation to shelters like Poverello or Naomi House [Times needed — Q6] before sunset [Other needs/suggestions — Q8] better communication with churches & nonprofit agencies on how to	Thank you for your comment. Poverello House is serviced by route 34, which is less than .5 miles, a walking distance, which is determined by transit industry standards to be a reasonable walking distance.	No	No	No

	RESP. PARTY	FY26 UTN COMMENTS RECEIVED	TRANSIT AGENCY RESPONSE	UNMET TRANSIT NEED? (Yes, No, N/A)	REASON-ABLE TO MEET (Yes, No)	PREVIOUSLY RECORDED RESPONSE (Yes, No)
		serve their community/clients				
17	Clovis Transit and FCRTA	<p>[Places/destinations — Q4] I would love to get up to the foothills near Clovis in an easy convenient way. Places like Auberry, Millerton Lake, Avocado, Pine Flat, Shaver Lakes. If not that there should be a shuttle bus to Clovis Lakes Wild Water Adventures in the summer season. We need to be able to get out to more nature and swimming locations during the hot months. I also would like to go out to the communities of Firebaugh or Laton to visit family</p> <p>[Times needed — Q6] Most buses should be running from 6:00am to at least 9:00pm or 10:00pm</p> <p>[Other needs/suggestions — Q8] The Clovis Stageline buses need to be more accessible with ramp entrances like the FAX buses have. The stairs they have are too steep for</p>	<p>Clovis Transit: Thank you for your comments and for sharing your positive feedback on the new routes. Q4: Auberry, Millerton Lake, Pine Flat, Shaver Lake, Firebaugh, Laton, and seasonal destinations such as Wild Water Adventure Park are outside Clovis Transit's service area. Q6: Requests for service until 9:00 PM or 10:00 PM would require reallocating existing operating resources and could result in reduced service elsewhere in the system. Q8: Clovis Transit's new 8-route network has expanded local travel options within the city. All vehicles are ADA accessible and equipped with lifts for riders who prefer not to use stairs. Requests for additional stops, including Willow/Teague and Willow/Shepherd, will be evaluated as part of future service refinement. FCRTA</p>	Yes	No	Yes

	RESP. PARTY	FY26 UTN COMMENTS RECEIVED	TRANSIT AGENCY RESPONSE	UNMET TRANSIT NEED? (Yes, No, N/A)	REASON-ABLE TO MEET (Yes, No)	PREVIOUSLY RECORDED RESPONSE (Yes, No)
		<p>some with mobility issues. They need to run later in the day especially on the weekends. If people want to go spend a nice weekend in Old Town Clovis can only to do it only during the day on most days. There should be additional stops on the Blue line on Willow and Teague and Willow and Shepard there are places of interest there. I am liking the new additional routes of the Clovis Stageline!</p>	<p>provides public transit service to the rural areas in Fresno County which includes fixed route and demand response services in Auberry and Firebaugh. The demand response service is provided on a reservation basis by calling 1-855-612-5184. KART provides transit services into Laton. FCRTA does not have evening services due to low ridership and farebox requirements.</p>			

	RESP. PARTY	FY26 UTN COMMENTS RECEIVED	TRANSIT AGENCY RESPONSE	UNMET TRANSIT NEED? (Yes, No, N/A)	REASON-ABLE TO MEET (Yes, No)	PREVIOUSLY RECORDED RESPONSE (Yes, No)
18	FAX Handy Ride	[Other needs/suggestions — Q8] My wife uses a wheelchair, so we reserve a bus whenever we must use public transportation. Pickup times, which are given to us in about 30-minute ranges, sometimes fall well outside those ranges; not every time, but sometimes. It is during these times, depending upon where we are, that we tend to sometimes get concerned. That said, the drivers of these vehicles have been universally helpful and considerate.	FAX: Thank you for your comment.FAX strives to provide on-time service to all our customers, both on fixed route and paratransit service. For Handy Ride, this means the bus should arrive within the 30-minute pick-up window based on the time the ride is booked. When the bus arrives outside this window, it is considered late, and the customer can ride for free. The FAX Handy Ride Guide is available on the FAX website, which provides the specifics about this policy and additional details about the service.	No	No	Yes
19	FAX	[Places/destinations — Q4] I need transportation to medical appointments in Fresno and Clovis. [Times needed — Q6] 8-5	Thank you for your feedback. There is insufficient information to comment. However, both FAX and Clovis Transit provide service to major hospitals and areas having a high concentration of medical offices and service providers in the Fresno Clovis area	No	No	Yes
20	FAX	[Places/destinations — Q4] Past where the bus stops at Shaw and Polk Avenues. It needs to go further [Times needed — Q6] Weekdays mostly	Thank you for your comment. Development west of Polk Ave. is insufficient to support transit service at this time.	No	No	Yes

	RESP. PARTY	FY26 UTN COMMENTS RECEIVED	TRANSIT AGENCY RESPONSE	UNMET TRANSIT NEED? (Yes, No, N/A)	REASON-ABLE TO MEET (Yes, No)	PREVIOUSLY RECORDED RESPONSE (Yes, No)
21	Clovis and FAX	[Places/destinations — Q4] Fresno Clovis [Times needed — Q6] 8am to 6pm	Clovis Transit: Thank you for your comment.Q4/Q6: Clovis Transit’s expanded 8-route fixed-route network currently operates Monday through Friday from 6:00 AM to 7:00 PM and Saturdays from 7:30 AM to 3:30 PM, providing improved connections throughout Clovis during the requested 8:00 AM to 6:00 PM timeframe..	No	No	Yes
22	FAX	[Places/destinations — Q4] Transportation to work for a 7:30 am start time near Courthouse Park. [Times needed — Q6] arrival at 7:15	Thank you for your comment. Q4/Q6: Clovis Transit’s expanded 8-route fixed-route network currently operates Monday through Friday from 6:00 AM to 7:00 PM and Saturdays from 7:30 AM to 3:30 PM, providing improved connections throughout Clovis during the requested 8:00 AM to 6:00 PM timeframe	No	No	Yes

	RESP. PARTY	FY26 UTN COMMENTS RECEIVED	TRANSIT AGENCY RESPONSE	UNMET TRANSIT NEED? (Yes, No, N/A)	REASON-ABLE TO MEET (Yes, No)	PREVIOUSLY RECORDED RESPONSE (Yes, No)
23	FAX and FCRTA	<p>[Places/destinations — Q4] 2800 block of E Olive Avenue from -4 miles south of Friant Dam off Friant; can be done with senior taxi discounted service as exists today.</p> <p>[Times needed — Q6] occasionally</p>	<p>Thank you for your comment. FCRTA previously operated the Friant Transit Service on a demonstration basis, however it was discontinued due to low ridership and not meeting farebox requirements. FCRTA currently provides the Rural Transit service which is individuals living outside the spheres of influence (SOI) of the incorporated cities for lifeline services such as doctor appointments, this is provided on a reservation basis by calling 1-855-612-5184.FAX only provides service within the City of Fresno area. Additionally, demand to the area south of Friant Dam would not be sufficient to warrant public transit service.</p>	Yes	No	No
24	FCOG	<p>[Other needs/suggestions — Q8] I just want to say that I hope the COG continues to fund GO GO GRANDPARENTS because that has been invaluable to me. It is a little frustrating because I can't add a stop to those rides and sometimes I just need to stop and drop</p>	<p>Thank you for your comment. It has been forwarded to the appropriate agency.</p>	N/A	No	Yes

	RESP. PARTY	FY26 UTN COMMENTS RECEIVED	TRANSIT AGENCY RESPONSE	UNMET TRANSIT NEED? (Yes, No, N/A)	REASON-ABLE TO MEET (Yes, No)	PREVIOUSLY RECORDED RESPONSE (Yes, No)
		something off or pick up Starbucks and I can't do it but that's a personal issue I guess but I just wanted to share that it is a valuable service to me and to many people that I know				
25	FAX and FCRTA	<p>[Places/destinations — Q4] I'd like to have regular service to Reedley, Coalinga, and other rural areas. Fresno County needs to have a transit system where all areas are reachable.</p> <p>[Times needed — Q6] At least until 7pm or so.</p> <p>[Other needs/suggestions — Q8] Why does FAX still require use of cash? Why don't they use Tap cards or an app on a cell phone? I travel to Denver, CO several times a year, and have never used cash. Same with Washington D.C., Seattle and Los Angeles. Why does the Central Valley still use an archaic system?</p>	Thank you for your comment. FCRTA provides public transit service to the rural areas in Fresno County which includes fixed route and demand response services. The demand response service is provided on a reservation basis by calling 1-855-612-5184. There have been several attempts to start a route in this service area such as the South Sierra Transit, however due to the lack of riders and farebox recovery the routes ended after a demonstration period.FAX is continuing to assess the feasibility of Tap-to-pay and mobile fare payment technologies	No	No	Yes

	RESP. PARTY	FY26 UTN COMMENTS RECEIVED	TRANSIT AGENCY RESPONSE	UNMET TRANSIT NEED? (Yes, No, N/A)	REASON-ABLE TO MEET (Yes, No)	PREVIOUSLY RECORDED RESPONSE (Yes, No)
26	FAX	[Other needs/suggestions — Q8] Greater frequency on all FAX fixed routes to encourage ridership increases. Dedicated bus lanes with shared bicycles for improved traffic flow. Bus priority signaling to decrease waiting at intersections. Ideally, all major intersections should be converted to traffic circles to improve traffic movement, decrease pollution due to idling, reduce electrical needs at intersections, reduce collisions and slowing traffic for better integration of alternate transportation.	Thank you for your comment. All FAX routes run 30 minute headways or less during peak hours on weekdays with multiple routes running 10, 15, and 20 minute headways during this time.	No	No	Yes
27	FCRTA	[Other needs/suggestions — Q8] Help our seniors get transportation to Fresno that live in the urban areas.	Thank you for your comment. Insufficient information	No	No	Yes
28	FAX	[Places/destinations — Q4] Kaiser Medical Center [Times needed — Q6] normal business hours	Thank you for your comment. Kaiser Medical Center is serviced by Routes 32 and 34.	No	No	Yes

	RESP. PARTY	FY26 UTN COMMENTS RECEIVED	TRANSIT AGENCY RESPONSE	UNMET TRANSIT NEED? (Yes, No, N/A)	REASON-ABLE TO MEET (Yes, No)	PREVIOUSLY RECORDED RESPONSE (Yes, No)
29	FCRTA	<p>[Places/destinations — Q4] Entire county.</p> <p>[Times needed — Q6] All day, especially in the morning.</p> <p>[Other needs/suggestions — Q8] Long ago I hear there used to be a transit station at Bear Mountain Library in Squaw Valley. We need it back.</p>	<p>Thank you for your comment. FCRTA provides public transit service to the rural areas in Fresno County which includes fixed route and demand response services. The demand response service is provided on a reservation basis by calling 1-855-612-5184. There have been several attempts to start a route in this service area such as the South Sierra Transit, however due to the lack of riders and farebox recovery the routes ended after a demonstration period.</p>	No	No	Yes
30	Clovis Transit	<p>[Places/destinations — Q4] Clovis Kaiser</p> <p>[Times needed — Q6] week day mornings</p> <p>[Other needs/suggestions — Q8] I need to go to Clovis Kaiser for my doctor but I would need to transfer from Fresno Handy Ride to Clovis bus. I am 91 and it would be much easier for me just to get on one bus and go all the way to my doctor's appointments.</p>	<p>Clovis Transit: Thank you for your comment.</p> <p>Q4: Kaiser is accessible once the rider enters the Clovis Transit ADA complementary paratransit service area.</p> <p>Q8: Under ADA service criteria, Clovis Round Up service must begin from an origin within the Clovis ADA service area, which mirrors the Clovis fixed-route corridors. Trips originating in Fresno must transfer through FAX Handy Ride or</p>	No	No	Yes

	RESP. PARTY	FY26 UTN COMMENTS RECEIVED	TRANSIT AGENCY RESPONSE	UNMET TRANSIT NEED? (Yes, No, N/A)	REASON-ABLE TO MEET (Yes, No)	PREVIOUSLY RECORDED RESPONSE (Yes, No)
			other regional providers before Clovis service begins. The current 8-route network improves local access once the trip enters Clovis.			
31	FAX	[Other needs/suggestions — Q8] We need a mobile wallet or reloadable card to use for fares.	Thank you for your comment. FAX is continuing to assess the feasibility of Tap-to-pay and mobile fare payment technologies.	No	No	Yes
32	FAX	[Other needs/suggestions — Q8] I signed up for Go go Granny but have been afraid to use it. ; No	Thank you for your comment. Under ADA service criteria, Clovis Round Up service must begin from an origin within the Clovis ADA service area, which mirrors the Clovis fixed-route corridors. Trips originating in Fresno must transfer through FAX Handy Ride or other regional providers before Clovis service begins. The current 8-route network improves local access once the trip enters Clovis.	N/A	No	No

	RESP. PARTY	FY26 UTN COMMENTS RECEIVED	TRANSIT AGENCY RESPONSE	UNMET TRANSIT NEED? (Yes, No, N/A)	REASON-ABLE TO MEET (Yes, No)	PREVIOUSLY RECORDED RESPONSE (Yes, No)
33	FCRTA	[Other needs/suggestions — Q8] I don't know if there are enough people wanting to go to China Peak Ski Resort on days when the ski lifts are open, but I could definitely use a public transport to go and come back from the ski resort, if a service is available.	Thank you for your comment. There is currently no service to China Peak as the ridership does not warrant such service due to farebox requirements.	No	No	No
34	Clovis Transit	[Places/destinations — Q4] Clovis after 3PM on Saturdays. Actually, I need to be able to get home from Clovis after working til 5 :30. ; Clovis after 7 on a Saturday and Sunday. Currently FAX has Route 9 that goes out on Saturday and Sundays but that service ends at 3:30. [Times needed — Q6] Clovis after 6PM; I need bus service from Clovis after 6PM on Saturday. For 18 years Clovis has said it was in the works but it hasn't happened yet. [Other needs/suggestions — Q8] Need a direct service from the Transit hubs to the other hubs. From Manchester to CSU Fresno.... to Clovis hub to downtown to River Park. ; Honestly I think the county should be responsible	Clovis Transit: Thank you for your comment.Q4/Q6: Requests for later evening service on Saturdays and Sundays remain an identified service need. However, extending service beyond current operating hours would require additional operating resources and may impact the frequency and reliability of the current 8-route network.Q8: Direct hub-to-hub regional travel involving Manchester, Downtown Fresno, and River Park extends beyond Clovis Transit's local service area and would require coordination with FAX and Fresno County regional providers.	Yes	No	Yes

	RESP. PARTY	FY26 UTN COMMENTS RECEIVED	TRANSIT AGENCY RESPONSE	UNMET TRANSIT NEED? (Yes, No, N/A)	REASON-ABLE TO MEET (Yes, No)	PREVIOUSLY RECORDED RESPONSE (Yes, No)
		for transit systems, not the city governments. I feel it would serve more people allowing them access to work and resources.				
35	FCRTA	<p>[Places/destinations — Q4] Southwest Fresno agriculture areas</p> <p>[Times needed — Q6] 6am-12pm Summer mornings and 6am-5pm Spring and Fall seasons</p> <p>[Other needs/suggestions — Q8] Not at this time</p>	Thank you for your comment. Q6: Requests for later evening service on Saturdays and Sundays remain an identified service need. However, extending service beyond current operating hours would require additional operating resources and may impact the frequency and reliability of the current 8-route network.	Yes	No	No

	RESP. PARTY	FY26 UTN COMMENTS RECEIVED	TRANSIT AGENCY RESPONSE	UNMET TRANSIT NEED? (Yes, No, N/A)	REASON-ABLE TO MEET (Yes, No)	PREVIOUSLY RECORDED RESPONSE (Yes, No)
36	FAX	<p>[Places/destinations — Q4] I'd like to reach the airport in approximately the same amount of time it takes to drive there (FAX does go there, but the ride is 45 min-1 hr)</p> <p>[Times needed — Q6] Early mornings and late evenings</p>	<p>Yosemite International Airport is serviced by routes 26 and 39 at approximately 30-minute frequencies weekdays from approximately between 6:00 AM and 10 PM, and weekends, between approximately 7:00 AM and 7:00 PM. Transportation alternatives are available through transportation network companies (TNCs) such as Uber and Lyft.</p>	No	No	Yes
37	FAX	<p>[Places/destinations — Q4] Woodward Park</p> <p>[Times needed — Q6] 5:00 pm to 8:00 pm</p> <p>[Other needs/suggestions — Q8] I hope the bus stops of Fresno Area Express are smoke-free. I don't want to inhale second hand smoke. There should be penalties for smoking in bus stops. Or a sign in a bus stop that this area is smoke free.</p>	<p>Thank you for your comment. Woodward Park is serviced by FAX BRT Rt. 1 with the stop located at Friant and First Ave. FAX bus stops are classified as 'City facilities' under Fresno Municipal Code that prohibits smoking.</p>	No	No	Yes
38	FAX	<p>[Other needs/suggestions — Q8] Fresno needs real BRT, not the watered down version we currently have. True stations, separate bus lanes, more frequent service. The Q should run 5am-12am M-Th,</p>	<p>Your comment is noted, thank you.</p>	No	No	Yes

	RESP. PARTY	FY26 UTN COMMENTS RECEIVED	TRANSIT AGENCY RESPONSE	UNMET TRANSIT NEED? (Yes, No, N/A)	REASON-ABLE TO MEET (Yes, No)	PREVIOUSLY RECORDED RESPONSE (Yes, No)
		5am-1am Fr, 6am-1am Sa, and 6am-11pm Su.				
39	FCRTA	<p>[Places/destinations — Q4] Transportation from Selma and Kingsburg to doctor's appointments in Fresno. Preferably without having to go to Fresno super early and come back super late.</p> <p>[Times needed — Q6] Timing varies depending on the appointment.</p> <p>[Other needs/suggestions — Q8] Lots of elderly people or people without reliable transportation are missing appointments because there isn't a well developed transit system between the outlying cities and Fresno/Clovis. A lot of people need transportation like this and it's either prohibitively expensive or non-existent.</p>	<p>Thank you for your comment. FCRTA provides public transit service and is not a medical transportation provider. FCRTA currently operates the Rural Transit service which is for lifeline services such as doctor appointments, this is provided on a reservation basis by calling 1-855-612-5184. FCRTA provides public transit service in the City of Kingsburg and Selma which includes both fixed route and demand response services. There are existing services available to do the noted trips, however increased frequencies cannot be accommodated due to funding constraints and farebox and ridership requirements.</p>	No	No	Yes
40	FAX	<p>[Other needs/suggestions — Q8] Drivers need to learn the zipper merge. I personally will not take public transport until it is my last option. Make roads better for the vast</p>	Your comment is noted, thank you.	N/A	No	No

	RESP. PARTY	FY26 UTN COMMENTS RECEIVED	TRANSIT AGENCY RESPONSE	UNMET TRANSIT NEED? (Yes, No, N/A)	REASON-ABLE TO MEET (Yes, No)	PREVIOUSLY RECORDED RESPONSE (Yes, No)
		majority of people who use them on a daily basis in a vehicle.				
41	FAX	[Other needs/suggestions — Q8] Bike lines and safe paths that are soiled with human waste or unhoused - Sunnyside area	Your comment is noted, thank you.	N/A	No	No
42	Not applicable	[Other needs/suggestions — Q8] 168 has a number of curves between Prather and Clovis that could be taken out. Also, how about doing 168 between the bottom of the 4-lane and Shepherd Ave, as even Caltrans says the level of traffic on 168 might become too much for a two-lane road. There is also a curve just past the 4-lane below Cressman's that could also be... removed.	Your comment is noted, thank you.	N/A	No	No
43	FAX	[Places/destinations — Q4] Work at shaw and grantland closest bus is 1.5 miles away. [Times needed — Q6] 11:30, maybe one more than they have now	Thank you for your comment. Development west of Polk Ave. is insufficient to support transit service at this time.	Yes	No	Yes
44	Transit agencies	[Other needs/suggestions — Q8] Night service. I work overnight and need a bus to fit my needs.	Thank you for your comment. FCRTA currently has no evening service as the ridership does not warrant such service due to farebox requirements.	Yes	No	No

	RESP. PARTY	FY26 UTN COMMENTS RECEIVED	TRANSIT AGENCY RESPONSE	UNMET TRANSIT NEED? (Yes, No, N/A)	REASON-ABLE TO MEET (Yes, No)	PREVIOUSLY RECORDED RESPONSE (Yes, No)
45	FAX	[Other needs/suggestions — Q8] The ticket machine at the majority of bus stops along route 1 NEVER WORK. It's very difficult to get to the transit center and even more so before 5pm. If you expect to buy a ticket using your card (standard practice in todays world) you are out of luck and when you tell the bus driver that the machines are not working they tell you to go to the transit center and still insist you somehow find a way to pay for the ride when there are not working machines literally for miles.	Thank you for your comment. FAX is continuing to assess the feasibility of Tap-to-pay and mobile fare payment technologies	No	No	Yes
46	Not applicable	[Other needs/suggestions — Q8] Fix the potholes in the roads instead of spending money on public transportation that is woefully underutilized.	Your comment is noted, thank you.	N/A	No	No

	RESP. PARTY	FY26 UTN COMMENTS RECEIVED	TRANSIT AGENCY RESPONSE	UNMET TRANSIT NEED? (Yes, No, N/A)	REASON-ABLE TO MEET (Yes, No)	PREVIOUSLY RECORDED RESPONSE (Yes, No)
47	Clovis Transit and FAX	<p>[Places/destinations — Q4] I live in Fresno but I am only 100 ft from Clovis, therefore to ride roundup, I walk to Vons at the corner of Fowler and Ashlan. In the summer when it is real hot and in the winter when it is very rainy and cold, I cannot do that. Roundup will go to Fresno but Handyride will not go to Clovis. It is difficult for me to travel around Clovis in the summer. Being 78 with health problems, I use script to travel in Clovis during the summer, that works out to about 2 trips a month. Living so close to Clovis but not being able to be picked up at my house during bad weather is a chronic problem when I need to go to the dentist, doctor appointments, banking and so on. Thank You for the opportunity to state my dilemma.</p> <p>[Times needed — Q6] 7:30am to 6pm.[Other needs/suggestions — Q8] I suggest for people with disabilities and/or limitations receive the opportunity to be picked up at their home and taken to their destination whether it is in Clovis or Fresno.</p>	Clovis Transit: Clovis Round Up provides service for trips originating within the Clovis service area, including travel to designated locations within Fresno. Trips that originate within Fresno are not eligible for direct pickup by Clovis Round Up and require transfer to the appropriate Fresno ADA paratransit service in accordance with the established interagency service boundary. Proximity to the Clovis service boundary does not change the trip origin requirement, and inclement weather does not alter the established service area limits.	No	No	Yes

	RESP. PARTY	FY26 UTN COMMENTS RECEIVED	TRANSIT AGENCY RESPONSE	UNMET TRANSIT NEED? (Yes, No, N/A)	REASON-ABLE TO MEET (Yes, No)	PREVIOUSLY RECORDED RESPONSE (Yes, No)
48	Not applicable	[Other needs/suggestions — Q8] I have a problem when I see a transit bus with only 1 or 2 people on board. There must be a more cost-effective way of doing it.	Your comment is noted, thank you.	N/A	No	No
49	Clovis Transit and FAX	[Places/destinations — Q4] Across town express, NW Fresno to Clovis[Times needed — Q6] 7AM to 6PM[Other needs/suggestions — Q8] We need to get tap or card options on bus or online. We need to have express busses that use freeways	Clovis Transit: Thank you for your comment.Q4: Crosstown travel between northwest Fresno and Clovis is available through existing FAX and Clovis Transit transfer points, including connections to the Teal and Green routes within the new 8-route network.Q8: Clovis Transit remains fare-free, so card or tap payment options are not required at this time. Express freeway-based service would fall outside Clovis Transit’s local circulator service model.Crosstown service is already provided.FAX is continuing to assess the feasibility of Tap-to-pay and mobile fare payment technologies	No	No	Yes
50	FCOG	[Other needs/suggestions — Q8] Please continue providing the Measure C Senior Taxi Script. Thank you	Thank you for your comment. It has been forwarded to the appropriate agency.	N/A	No	Yes

	RESP. PARTY	FY26 UTN COMMENTS RECEIVED	TRANSIT AGENCY RESPONSE	UNMET TRANSIT NEED? (Yes, No, N/A)	REASON-ABLE TO MEET (Yes, No)	PREVIOUSLY RECORDED RESPONSE (Yes, No)
51	Clovis Transit	<p>[Places/destinations — Q4] I have been unable to get clovis transit to answer the phone and I am visually i,'m visually impaired// How can I reach them to schedule transit. Have they changed their number?</p> <p>[Times needed — Q6] sun am to and from church, weekdays to eye clinic on roundup.</p> <p>[Other needs/suggestions — Q8] how can I reach Clovis roundup? what is the correct number? I got through 2 times and was told to wait for an agent but then they ended the call both time call in less than 19 seconds.</p>	<p>Clovis Transit: Thank you for bringing this to our attention.Q4/Q8: The Clovis Transit fixed-route information line is 559-324-2770, and Clovis Round Up paratransit reservations can be reached at 559-324-2760. Riders may also book eligible Round Up trips through the Clovis Transit mobile app.Q6: Sunday Round Up service is available within the Clovis ADA paratransit service area. The expanded 8-route fixed-route system also improves weekday access to medical services, including eye clinic destinations located within the service area.</p>	No	No	No
52	Transit agencies	<p>[Other needs/suggestions — Q8] Thank you for doing the survey.</p>	<p>Clovis Transit: Thank you for your comment.</p>	N/A	No	No

	RESP. PARTY	FY26 UTN COMMENTS RECEIVED	TRANSIT AGENCY RESPONSE	UNMET TRANSIT NEED? (Yes, No, N/A)	REASON-ABLE TO MEET (Yes, No)	PREVIOUSLY RECORDED RESPONSE (Yes, No)
53	Clovis Transit, FCRTA and FAX	<p>[Places/destinations — Q4] Downtown Fresno, River Park, Clovis.</p> <p>[Times needed — Q6] Business hours and evenings.</p> <p>[Other needs/suggestions — Q8] Rapid transit from Fresno County towns to Fresno and Clovis.</p>	<p>Thank you for your comment. FAX is already providing service between Downtown Fresno and River Park. Q4: Downtown Fresno and River Park are outside Clovis Transit's local service area and are served through FAX regional connections. Q6: Evening service requests continue to be evaluated; however, expanding hours beyond the current 8-route service span would require additional resources. Q8: Regional rapid transit connections from Fresno County communities into Fresno and Clovis would require countywide and interagency planning beyond Clovis Transit's local jurisdiction. FCRTA provides public transit service to the rural areas in Fresno County which includes fixed route and demand response service is provided on a reservation basis by calling 1-855-612-5184. FCRTA currently has no evening service as the ridership does not warrant such service due to farebox</p>	No	No	Yes

	RESP. PARTY	FY26 UTN COMMENTS RECEIVED	TRANSIT AGENCY RESPONSE	UNMET TRANSIT NEED? (Yes, No, N/A)	REASON-ABLE TO MEET (Yes, No)	PREVIOUSLY RECORDED RESPONSE (Yes, No)
			requirements.			
54	FCOG	[Other needs/suggestions — Q8] Measure C scrip program is appreciated. However. the GOGO Grandparent program for Uber is cumbersome and inconvenient and expensive. It would be much easier to allow an option just to upload the credit directly onto my Uber account, if possible.	Thank you for your comment. It has been forwarded to the appropriate agency.	N/A	No	Yes

	RESP. PARTY	FY26 UTN COMMENTS RECEIVED	TRANSIT AGENCY RESPONSE	UNMET TRANSIT NEED? (Yes, No, N/A)	REASON-ABLE TO MEET (Yes, No)	PREVIOUSLY RECORDED RESPONSE (Yes, No)
		Also please make a \$5 tax scrip. Better for everyone. Thank you				
55	FCRTA	<p>[Places/destinations — Q4] I'd like to be able to travel from Tivy Valley Market to Avocado Lake or to Sanger or Fresno. It would also be nice to get to the Piedra Library or Reedley as well from the Valley.; I'd like to be able to get to Kings Canyon National Park from Fresno or Sanger or Reedley without having to take my car.</p> <p>[Other needs/suggestions — Q8] It would be cool to have a walking or biking trail from the Tivy Valley neighborhood to Avocado Lake, but a bus system from there into town would also be nice.</p>	Thank you for your comment. FCRTA currently provides the Rural Transit service which is for individuals living outside the sphere of influence (SOI) of the incorporated cities for lifeline services, this is provided on a reservation basis by calling 1-855-612-5184. FCRTA previously had Big Trees Transit providing service to Kings Canyon National Park on a demonstration basis, which was discontinued due to low ridership and high costs.	No	No	Yes

	RESP. PARTY	FY26 UTN COMMENTS RECEIVED	TRANSIT AGENCY RESPONSE	UNMET TRANSIT NEED? (Yes, No, N/A)	REASON-ABLE TO MEET (Yes, No)	PREVIOUSLY RECORDED RESPONSE (Yes, No)
56	Transit agencies	<p>[Places/destinations — Q4] pick up time is taking 1-1.5 hours.....need better timing in the afternoon after 2 pm</p> <p>[Other needs/suggestions — Q8] use a walker. Agan better service after 2pm</p>	<p>Thank you for your comment.</p> <p>Q4/Q8: Clovis Transit provides Round Up service within the existing service area and recognizes that afternoon demand after 2:00 PM can create longer pickup windows. Staff continues to monitor scheduling patterns, vehicle deployment, and peak-period trip demand to improve pickup timing and reduce wait times, particularly for riders with mobility devices such as walkers.</p>	No	No	Yes
57	FAX	<p>[Places/destinations — Q4] Vineyard Farmers Market, BF Sisk Courthouse, Saint Agnes Medical Center, Whole Foods Market.</p> <p>[Times needed — Q6] Mornings 8am, return service between 9am-3pm.</p> <p>[Other needs/suggestions — Q8] Bus service should be far more frequent. I could manage the transfers with no problem if the buses ran more frequently. Also, there should be a bus pass available for purchase online and delivered by USPS, or some kind of system</p>	<p>Thank you for your comment. Transit service is provide to all locations identified.FAX passes are also available by mail through Manchester Transit Center.</p>	No	No	Yes

	RESP. PARTY	FY26 UTN COMMENTS RECEIVED	TRANSIT AGENCY RESPONSE	UNMET TRANSIT NEED? (Yes, No, N/A)	REASON-ABLE TO MEET (Yes, No)	PREVIOUSLY RECORDED RESPONSE (Yes, No)
		allowing for payment with tap cards. There are no fare kiosks anywhere, super-inconvenient, and decades behind the times.				
58	FAX	[Places/destinations — Q4] Tulare and maple kings canyon all down maple needs proper middle cross walks for kids crossing and also so cars stop crashing; Maple and Belmont intersection needs to extend the turning lane to not cause traffic for vehicles going north on maple	Thank you for your comment. We will forward it to Public Works.	N/A	No	No
59	FAX	[Places/destinations — Q4] 900 W Belgravia Ave, Fresno , CA [Times needed — Q6] 7.30 am to 8.00 pm	Thank you for your comment. The development densities at this location is insufficient to support public transit.	Yes	No	Yes
60	FAX	[Other needs/suggestions — Q8] People in my town without cars need help with rides to the courthouse and other social services type places, social security offices, IRS, etc.	Thank you for your comment. Insufficient origin information. FAX services multiple courthouses and social services offices within the City of Fresno.	No	No	Yes

	RESP. PARTY	FY26 UTN COMMENTS RECEIVED	TRANSIT AGENCY RESPONSE	UNMET TRANSIT NEED? (Yes, No, N/A)	REASON-ABLE TO MEET (Yes, No)	PREVIOUSLY RECORDED RESPONSE (Yes, No)
61	FAX and FCOG	<p>[Places/destinations — Q4] Kaiser Medical Center I had a stroke and unable to walk very well. My husband has passed and I don't drive or have a car.</p> <p>[Times needed — Q6] 10am —4pm.</p> <p>[Other needs/suggestions — Q8] I currently use scrip but it's only for two or three rides per month.</p>	Thank you for you for comment. Kaiser Medical Center is serviced by Routes 32 and 34.	No	No	Yes
62	FAX	<p>[Places/destinations — Q4] Fresno LDS Temple, Sierra and Fig Garden Loop</p> <p>[Times needed — Q6] Hourly, 6 am to 6 pm</p> <p>[Other needs/suggestions — Q8] If there was a bus line that went from Shaw and Brawley, along Fig Garden Loop to Bullard Ave, I would have transportation to both my church AND the Public Library at Bullard and Marks! The bus could either turn down Marks or West from Bullard.</p>	Thank you for your comment. Currently, FAX does not have service to this location. Bullard Ave. cross-town service is in FAX's long-term transit plans	Yes	No	No

	RESP. PARTY	FY26 UTN COMMENTS RECEIVED	TRANSIT AGENCY RESPONSE	UNMET TRANSIT NEED? (Yes, No, N/A)	REASON-ABLE TO MEET (Yes, No)	PREVIOUSLY RECORDED RESPONSE (Yes, No)
63	FAX	<p>[Places/destinations — Q4] Anywhere, we have no public transit service available. Since becoming a senior I can now appreciate the services provided. However where I live not even public service is available within walking distance. No senior center, no bus transportation, nothing. I am so sorry we made the decision to move to this area.</p> <p>[Times needed — Q6] M-F 8:00 AM - 8:00 PM Sat -Sun 8 am - 8 pm</p> <p>[Other needs/suggestions — Q8] A Senior Center much like what is provided in Clovis would be wonderful</p>	Insufficient origin and destination service to address transit needs.	No	No	Yes
64	FCRTA	[Places/destinations — Q4] Caruthers to Fresno	Thank you for your comment. FCRTA currently operates the Coalinga intercity service providing service from Caruthers to Fresno. The route schedule is available at www.ruraltransit.org .	No	No	Yes
65	FAX	[Places/destinations — Q4] It's asinine that people have to take 3 buses to get to where they want to go. Or walk a mile plus after getting on the bus. Fresno is the worse mapped out bus route	Your comment is noted, thank you.	No	No	Yes

	RESP. PARTY	FY26 UTN COMMENTS RECEIVED	TRANSIT AGENCY RESPONSE	UNMET TRANSIT NEED? (Yes, No, N/A)	REASON-ABLE TO MEET (Yes, No)	PREVIOUSLY RECORDED RESPONSE (Yes, No)
		<p>in the state of California. Why is it so hard to learn from other cities?</p> <p>[Times needed — Q6] 6am</p>				
66	FAX	<p>[Places/destinations — Q4] Trying to get two events that start after 9 PM and able to get home after the event; Buses that go up and down Bullard up and down Barstow also cutting through Fresno State on Barstow</p>	<p>Thank you for your comment. Insufficient information.</p> <p>Additionally, a Bullard Ave. cross-town is in FAX's long-term transit plans.</p>	No	No	Yes
67	Clovis Transit and FAX	<p>[Places/destinations — Q4] SE Fresno to Clovis. Need a north-south bus route. A simple Clovis Ave line would be very helpful even though it would travel through Fresno city, Fresno County & Clovis areas.; North-south bus route on Clovis Avenue from Jensen to Herndon. Its ridiculous to travel 3 sides of a rectangle to get to a destination. Eastern Fresno has been ignored for decades. ; South-north bus route in east Fresno. SE Fresno has been ignored for decades. A route on Clovis Avenue or Fowler Avenue would be very helpful. All the way to Shaw/Herndon in Clovis.</p>	<p>Clovis Transit: Thank you for your comment.Q4: A continuous Clovis Avenue route from Jensen to Herndon would extend well beyond Clovis Transit's local service area.The recently implemented 8-route Clovis Transit network improves north-south mobility within Clovis, including service along portions of Clovis Avenue via the Yellow Route between Ashlan and Teague and connections north toward Herndon.A north-south route along Clovis Ave. is in FAX's long-term transit plans.</p>	No	No	No

	RESP. PARTY	FY26 UTN COMMENTS RECEIVED	TRANSIT AGENCY RESPONSE	UNMET TRANSIT NEED? (Yes, No, N/A)	REASON-ABLE TO MEET (Yes, No)	PREVIOUSLY RECORDED RESPONSE (Yes, No)
68	Clovis Transit, FAX, and FCRTA	<p>[Places/destinations — Q4] Sanger to Downtown Clovis, Sanger to Fresno State, Sanger to Southeast Fresno shopping in less than an hour.</p> <p>[Times needed — Q6] Sanger to Fresno State on weekdays, Sanger to Southeast Shopping daily or on the weekends, Sanger and Downtown Clovis on the weekends.</p> <p>[Other needs/suggestions — Q8] If we can have an integrated pay system to use across systems that would be helpful. Passes for kids and seniors and college students who need frequent use. Pay for outreach once new routes are established so we know-- maybe notify all of the schools and send flyers home through schools.</p>	<p>Thank you for your comment. FCRTA currently operates the Orange Cove inter-city service providing service from Sanger to downtown Fresno and connections to FAX or Clovis Transit. This service is available M-F and is not available on the weekends due to ridership demand and farebox requirements. Clovis Transit: Thank you for your comment. Q4/Q6: Sanger and southeast Fresno are outside Clovis Transit's local service area and would require regional connections through FAX, FCRTA, and other providers. Q8: Clovis Transit's fare-free 8-route system supports seamless transfers without requiring a local fare payment. Outreach regarding new routes and service changes will continue through schools, community partners, flyers, and digital channels.</p>	No	No	Yes

	RESP. PARTY	FY26 UTN COMMENTS RECEIVED	TRANSIT AGENCY RESPONSE	UNMET TRANSIT NEED? (Yes, No, N/A)	REASON-ABLE TO MEET (Yes, No)	PREVIOUSLY RECORDED RESPONSE (Yes, No)
69	Transit agencies	[Other needs/suggestions — Q8] connection to full-service grocery stores, community gardens, and other food access points.	FAX service is throughout the City of Fresno with service to make full service grocery stores, community gardens, and other access points. FCRTA provides public transit service to the rural areas in Fresno County which includes fixed route and demand response services. The demand response service is provided on a reservation basis by calling 1-855-612-5184	No	No	Yes
70	FAX	[Places/destinations — Q4] Woodward Park and Chaffee Zoo. There used to be a bus stop across the street from the park, but now it's an exhausting walk for someone with my disability to get to. You used to have a bus stop right at the front door of the zoo, now it's in a dangerous area. I don't want to go anymore if I feel like I'm going to get attacked. [Times needed — Q6] Any, mostly mornings due to Fresno's early summers. [Other needs/suggestions — Q8] How about something like a clipper card like they	Thank you for your comment. Woodward Park is serviced by BRT Route 1 at Friant and Fresno Street, less than .5 miles. FAX is also studying bus stop options for Chaffee ZOO. FAX is continuing to assess the feasibility of Tap-to-pay and mobile fare payment technologies.	No	No	No

	RESP. PARTY	FY26 UTN COMMENTS RECEIVED	TRANSIT AGENCY RESPONSE	UNMET TRANSIT NEED? (Yes, No, N/A)	REASON-ABLE TO MEET (Yes, No)	PREVIOUSLY RECORDED RESPONSE (Yes, No)
		have in the bay area.				
71	FAX	Dedicated bus lanes, an additional rapid transit line like the Q, Rt. 1 that goes up to Clovis, and bus shelters at stops that don't have them already. It sucks standing in the sun or rain for the bus.	Thank you for your comments. FAX has explored the use of dedicated bus lanes on parts of the FAX fixed-route network.	No	No	Yes
72	FAX and Clovis Transit	[Places/destinations - Q4] Clovis to anywhere in Fresno. [Times needed - Q6] Evenings and night (to go to downtown and back home at night). [Other needs/suggestions - Q8] Look into a light rail or offer a credit card tap reader.	Thank you for your comments. Fresno Council Of Governments (FCOG) is in the early stages of assessing feasibility for a light rail transit system in the Fresno-Clovis Metropolitan area.FAX is continuing to assess the feasibility of Tap-to-pay and mobile fare payment technologies.	No	No	Yes

	RESP. PARTY	FY26 UTN COMMENTS RECEIVED	TRANSIT AGENCY RESPONSE	UNMET TRANSIT NEED? (Yes, No, N/A)	REASON-ABLE TO MEET (Yes, No)	PREVIOUSLY RECORDED RESPONSE (Yes, No)
73	FAX	<p>[Places/destinations - Q4] Doctor and dental appointments, shopping, pharmacy for medications, and any other specialists that my doctor may refer me to.</p> <p>[Times needed - Q6] Weekdays mostly at 7 am to whenever.</p> <p>[Other needs/suggestions - Q8] I have not been told if or when a handicapped service will be provided but I am patiently waiting the outcome.</p>	Note: Staff reached out to the submitter of this comment to address their needs directly. Insufficient information.	No	No	No

DISCUSSION FROM SSTAC RELATING TO THE COMMENTS RECEIVED FOR THE FY 2026-2027 UNMET TRANSIT NEEDS ASSESSMENT

Table 4 is the list of comments received during the FY2026-27 Unmet Transit Needs Assessment. Also included with each public comment is a comment number, the relevant jurisdiction(s), the operator response, whether the comment is an unmet need, whether the need is reasonable to meet, and whether the comment has been recorded in a previous UTN cycle. The definition of unmet needs and reasonable to meet are contained in Fresno COG Resolution 90-15 on pages 5 and 6 above.

Section 99401.5(c) of the California Public Utilities Codes specifies, “The transportation planning agency shall determine its definitions of the terms ‘unmet transit needs’ and ‘reasonable to meet’ for the purposes of this section which shall be documented by resolution or within the minutes of the agency.” The Fresno COG Policy Board does this with Resolution 90-15.

This year, 73 comments were received, 12 of which met the definition of an ‘unmet transit need’, 12 comments were not applicable, and 49 which did not meet the definition. Of the comments received that meet the definition of an unmet transit need, none of them were found to be reasonable to meet.

Comments received were directed at all Fresno Area Express, Clovis Transit and Fresno County Rural Transit Agency, along with a few directed at the Fresno Council of Governments. FAX received around two-thirds of the comments, which tracks with its role as the largest operator in the region. A fair number of comments named more than one agency, often where the rider’s trip crossed a service-area boundary.

The comments were largely familiar ones with fare payment, a frequent topic. Many riders are asking for top-to-pay, mobile wallets, and a “regional card”. Coverage gaps were close behind, including requests for service into parts of west and southeast Fresno, rural areas outside of urbanized areas, and foothill destinations. Service span was another form of recurring comment, particularly evening and weekend hours. Comments from paratransit riders touched on the timing of pickups and transfers between service areas. A smaller number of comments asked for capital improvements such as dedicated bus lanes or light rail, and a handful were not transit related.

About two-thirds of comments were flagged as comments previously received, which is consistent with the recurring nature of the requests. Most of what came in this cycle aligns with what the transit operations have received in previous years.

INSTRUCTIONS AND NEXT STEPS FOR TTC/PAC PERTAINING TO THE FY 2026-2027 UNMET TRANSIT NEEDS ASSESSMENT

The publicly noticed hearing to receive comments regarding potential unmet transit needs in Fresno County will be held Tuesday, June 2, 2026, starting at 5:30 p.m. at the Fresno COG Policy Board meeting. The hearing will be held in the Sequoia Room at the office of Fresno COG, located at 2035 Tulare, Ste. 201, Fresno, CA 93721. The comments received have been added to Table 4, Matrix of Public Comments Received, Operator Responses, and Determinations.

At its Tuesday, June 4, 2026, meeting, SSTAC, using Fresno COG Resolution 90-15, was asked to make a recommendation regarding whether any of the public comments in Figure 1 constitute:

- An Unmet Transit Need
- An Unmet Transit Need that is reasonable to meet; or
- An Unmet Transit Need that is unreasonable to meet.

More specifically, SSTAC was asked to make a finding that there are twelve unmet needs, none of which are reasonable to meet within the County of Fresno.

Harold Sobrado presented the UTN Assessment to SSTAC, addressing the public outreach process that consisted of six in-person public meetings, one virtual meeting, a public hearing, a public survey and social media outreach. Committee members were also given the opportunity to ask questions and provide comments about the process and the Assessment itself. They were then asked to make a motion to approve the draft Unmet Transit Needs Assessment for FY 2026-27, forwarding it to the Fresno COG Technical Transportation Committee / Policy Advisory Committee (TTC/PAC). The motion was made by xxx and seconded by xxx.

PUBLIC TRANSPORTATION PLAN SUMMARY AND RECOMMENDATIONS BY JURISDICTION

A. Overview

The Regional Transportation Plan (RTP) for public transportation services contains a Fresno-Clovis Metropolitan Area (FCMA) component, a Fresno County rural component, and a social service transportation component.

The Metropolitan Area component is implemented through the "Short Range Transit Plan" (SRTP) for the Fresno County Metropolitan Area (FCMA). The 2024-2026 FCMA SRTP was adopted by the Fresno COG Policy Board on June 29, 2023. It provides a detailed service plan for implementation over five years. The Rural Area component is implemented through the Rural SRTP for the Fresno County Rural Area, which provides a detailed service plan for the implementation of rural transit services over the same five-year period. Short Range Transit Plans are updated every other year and reviewed within the same timeframe as the Unmet Transit Needs.

In addition to these Short-Range Transit Plans, the Fresno COG annually adopts an Operations Program and Budget for the coordination and consolidation of transportation for specialized social service programs within Fresno County. The 2026-2027 Operations Program and Budget for the City of Clovis and the Urban and Rural Consolidated Transportation Services Agency (CTSA) are expected to be adopted on June 25, 2026.

B. Fresno-Clovis Metropolitan Area (FCMA)

The Regional Transportation Plan calls for fixed-route service within the Metropolitan Area to be provided by FAX, with financial participation from the City of Clovis and Fresno County for service to non-Fresno City residents within FAX's service area. Demand responsive Handy Ride service is provided through FAX under contract with National Express Transit (NEXT). The Short-Range Transit Plan (SRTP) for the FCMA sets forth the specific service implementation plan for the five-year fiscal period from 2024-2028 and was adopted on June 29, 2023. It is this SRTP that implements the near-term service goals and objectives of the Regional Transportation Plan.

The Regional Transportation Plan and the FCMA Short Range Transit Plan also continue to emphasize specialized service for disabled and elderly residents, who are unable to utilize the fixed-route buses.

Service will be funded with \$45.0 million in the State of California Transportation Development Act - Local Transportation Funds. FAX is also anticipating \$14.9 million in Measure C funds and \$18.6 million funded by the Federal Transit Administration, including funds for maintenance of FAX vehicles. The remaining funds are derived from farebox revenues and special services provided under contracts with outside organizations. Although the City of Fresno does not propose to expend any of its Local Transportation Funds on streets and roads in FY 2026-2027, a "transit needs finding" is necessary to be consistent with SB-498. SB-498 states that the lack of available resources shall *not* be the sole reason for finding a transit need is *not* reasonable to meet.

The City of Clovis operates two types of public transit services. Clovis Stageline provides public fixed-route service within the City Limits, and Clovis Round-Up, a specialized demand responsive service for disabled residents. The City of Clovis designates Round-up services as the

Consolidated Transportation Services Agency (CTSA) for the Clovis Transit Service Area.

For the FY2026-27, the estimated cost for the operation of Clovis Transit is \$14,302,100. Notably, although the City of Clovis does not plan to allocate any Local Transportation Funds on streets and roads during this period, it's imperative to conduct a "transit needs finding" in alignment with SB-498. SB-498 mandates that the lack of available resources shall *not* be the sole reason for disregarding the identification of transit needs deemed necessary for meeting community requirements.

Rural Areas

The Regional Transportation Plan calls for service to rural portions of Fresno County, including intra-city service in and around thirteen rural incorporated cities, thirty-nine unincorporated communities, and inter-city service linking those cities to the Fresno Clovis Metropolitan Area on the following corridors:

- (1) Firebaugh - Mendota - San Joaquin - Kerman Corridor to Fresno
- (2) Kingsburg - Selma - Fowler Corridor to Fresno
- (3) Orange Cove - Reedley - Parlier - Sanger Corridor to Fresno
- (4) Coalinga - Huron – Five Star - Five Points - Lanare - Riverdale - Caruthers - Raisin City - Easton Corridor to the Fresno

During the latter part of FY1978-79 and the beginning of FY1979-80, in cooperation with rural incorporated cities in Fresno County, Fresno COG prepared and adopted specific short-range transit development programs to define the implementation of rural public transportation service in conformance with the Regional Transportation Plan. In September 1979, Fresno County Rural Transit Agency (FCRTA) was formed and assigned responsibility for implementing the service requirements of the Regional Transportation Plan as set forth by the Transit Development Programs. Services set forth by the Regional Transportation Plan and the Transit Development Programs were fully implemented by mid-February 1980.

A comprehensive Short-Range Transit Plan (Rural SRTP) for the Rural Fresno County Area, which updated the individual Transit Development Programs, was first adopted on November 17, 1983. The five-year Rural SRTP is updated biennially. The latest update of the "Short-Range Transit Plan for the Rural Fresno County Area 2026-2028" and was adopted on June 26, 2025. The estimated cost for the operation of the FCRTA in FY 2026 is \$11,160,405. The Services will be funded with \$5,358,585 of State Transportation Development Act - (TDA) Local Transportation Funds (LTF). The FCRTA will utilize \$1,266,389 from its Measure – C funds to support the operations. An additional \$2,231,389 will be funded by the Federal Transit Administration (FTA) 5311. Farebox receipts are projected to be \$1,744,860 and Interest is estimated at \$281,360.

D. Social Service Transportation

The updated Social Service Transportation Action Plan and Inventory were adopted on January 29, 1998, and co-designated the City of Fresno and the Fresno Economic Opportunities Commission (FEOC) as the Fresno Urban Consolidated Transportation Service Agency (CTSA).

The Action Plan further designates the City of Clovis, as the Clovis CTSA, and the Fresno County Rural Transit Agency (FCRTA) and the FEOC as the Fresno Rural Area CTSA.

In FY2020-21, FCRTA, FAX, and Fresno COG sought sole designation of the Fresno Urban and Rural CTSA. With sole designation of both CTSAs, both FAX and FCRTA can be more inclusive of additional social services transportation services providers through an RFP process. Additionally, sole designation allows FAX and FCRTA direct oversight of the Fresno Urban and Rural CTSAs. Under this new-sole designation status, FEOC continues to be a significant participant in both the Urban and Rural CTSAs.

Since FY1982-83, Fresno COG has set aside five percent (5%) of Local Transportation Funds (Table 1) each year for social service transportation. An Operations Program and Budget (OPB) have been prepared for the Fresno Urban CTSA, Clovis CTSA, and the Fresno Rural CTSA. The FY2026-27 OPBs are scheduled for adoption on June 25, 2026, which documents commitments for matching funds from participating social service agencies and defines the types of coordinated/consolidated services to be provided so funds may be released.

Since 1983, the Fresno and Urban CTSAs consisted of the Fresno Economic Opportunities Commission (FEOC), the Fresno County Rural Transit Agency (FCRTA), and the City of Fresno. In FY2020-21, FCRTA and FAX recommended that each agency be solely designated without FEOC for each of their respective CTSAs. Fresno COG approved self-designation for the Fresno Urban and Rural CTSAs on November 19, 2020.

Analysis of Proposed Public Transportation Services and Recommended Findings for - Local Agencies FY2026-27

A. City of Clovis

The City of Clovis operates two types of public transit services within its jurisdiction. Clovis Round Up is a specialized demand responsive service designated as the Consolidated Transportation Services Agency (CTSA) for the Clovis Transit Service Area, serving elderly and disabled residents. Clovis Stageline provided the general public fixed route service within the city limits operating two main routes and two school routes.

In 2025, Clovis significantly expanded its fixed-route network with the launch of eight newly developed routes. This expansion aims to improve travel efficiency, enhance access to employment, education, healthcare and strengthen regional transit connections.

Inter-city service to Fresno is available on Clovis CTSA's Round-up and Fresno Area Express / Handy Ride.

Recommendation:

It is recommended that the Fresno COG Policy Board finds that there are three (3) unmet transit needs, one (1) assigned to the City of Clovis alone, one (1) shared with Fresno County, and one (1) shared with the City of Fresno and Fresno County that are not reasonable to meet. It is recommended that the Fresno COG Policy Board find that public transportation needs within the City of Clovis will be reasonably met. Service requirements contained within the Regional

Transportation Plan will be satisfied.

B. City of Coalinga

The City of Coalinga, under an inter-agency agreement with the FCRTA, provides intra-city and inter-city service using vehicles owned by the FCRTA. All FCRTA vehicles are lift-equipped for elderly and disabled accessibility.

The Coalinga Transit intra-city demand responsive service operates with one (1) vehicle during an approximate eight (8) hour service period Monday through Friday.

Coalinga Transit also provides inter-city fixed-route service, with route deviation to pick-up disabled passengers, between Coalinga and Fresno. The vehicle provides one (1) round trip through Pleasant Valley Prison, Huron, Five Points, Lanare, Riverdale, Caruthers, Raisin City, and Easton, during an approximate nine and $\frac{3}{4}$ (9.75) hour period, Monday through Saturday.

Recommendation:

It is recommended the Fresno COG Policy Board find that public transportation needs within the City of Coalinga, Sphere of Influence, and surrounding Area will be reasonably met. Service requirements contained in the Regional Transportation Plan will be satisfied.

C. City of Firebaugh

The City of Firebaugh, under an inter-agency services agreement with the FCRTA, provides demand-responsive service within Firebaugh's Sphere of Influence, and the surrounding area is available by an FCRTA's lift-equipped vehicle, Monday through Friday for approximately nine and $\frac{3}{4}$ (9.75) hours per day. A second vehicle is available for inter-city trips between Firebaugh and Mendota during an approximate nine (9) hour period, Monday through Friday.

The FCRTA also contracts to operate Westside Transit as a multiple round trip general public commuter service, during an eight and a half (8-1/2) hour period, Monday through Friday, using a lift-equipped vehicle, which may deviate from its route to pick-up disabled passengers. The service is provided on a scheduled fixed route to serve patrons "between" Firebaugh, Mendota, San Joaquin and surrounding communities, Kerman, and "to" and "from" Fresno.

Recommendation:

It is recommended the Fresno COG Policy Board finds that public transportation needs within the City of Firebaugh, its Sphere of Influence, and surrounding area will be reasonably met. Service requirements contained in the Regional Transportation Plan will be satisfied.

D. City of Fowler

The City of Fowler, under an inter-agency services agreement with FCRTA, provides transportation services within its Sphere of Influence and surrounding area. A lift- equipped FCRTA vehicle is in the service of the community approximately eight (8) hours per day, Monday through Friday.

The FCRTA also contracts to operate Southeast Transit as a multiple round trip general public

commuter service, for approximately eight and a half (8-1/2) hour period, Monday through Friday, using a lift-equipped vehicle, which may deviate from its route to pick-up disabled passengers. The service is provided on a scheduled fixed route to serve patrons "between" Kingsburg, Selma, and Fowler and "to" and "from" Fresno.

Recommendation:

It is recommended the Fresno COG Policy Board find that public transportation needs within the City of Fowler, its Sphere of Influence, and the surrounding area will be reasonably met. Service requirements contained in the Regional Transportation Plan will be satisfied.

E. City of Fresno

Fresno Area Express (FAX) provides fixed route service seven (7) days-a-week throughout the Fresno-Clovis Metropolitan Area. The City of Clovis and Fresno County financially participate in a service for non-Fresno City residents within FAX's service area. FAX contracts with National Express Transit (NEXT) for weekday and weekend demand-responsive service on Handy Ride. This paratransit service is oriented towards those who are unable to use the fixed-route service.

Recommendation:

It is recommended that the Fresno COG Policy Board find that there are six (6) unmet transit needs, four (4) assigned to the City of Fresno alone, one (1) that is shared with Fresno County, and one (1) shared with Fresno County and the City of Clovis that are not reasonable to meet, and that public transportation needs within the City of Fresno will be reasonably met. Service requirements contained within the Regional Transportation Plan will be satisfied.

F. City of Huron

The City of Huron, under an inter-agency services agreement with the FCRTA, provides public transportation service within the Sphere of Influence, and surrounding area utilizing two (2) FCRTA wheelchair accessible modified vehicles. The intra-city services are available during an approximate eight (8) hour period, Monday through Friday.

The City of Huron continues to provide funding for an inter-city "lifeline" service to Coalinga. Three (3) round trips are provided during an eight (8) hour period, Monday through Friday.

Coalinga Transit also provides inter-city fixed-route service, with route deviation to pick-up disabled passengers, between Coalinga and Fresno. The vehicle provides one (1) round trip through Pleasant Valley Prison, Huron, Five Points, Lanare, Riverdale, Caruthers, Raisin City, and Easton, during an approximate nine and $\frac{3}{4}$ (9.75) hour period, Monday through Saturday.

Recommendation:

It is recommended that the Fresno COG Policy Board find that public transportation needs within the City of Huron, its Sphere of Influence, and the surrounding area will be reasonably met. Service requirements contained in the Regional Transportation Plan will be satisfied.

G. City of Kerman

The City of Kerman, under an inter-agency services agreement with the FCRTA, provides demand-responsive public transportation service with an FCRTA vehicle within its Sphere of Influence and surrounding area using a lift-equipped FCRTA vehicle, for approximately eight (8) hours a day, Monday through Friday.

The FCRTA also contracts to operate Westside Transit as a multiple round trip general public commuter service, for approximately eight and a half (8-1/2) hour period, Monday through Friday, using lift-equipped vehicles, which may deviate from its route to pick-up disabled passengers. The service is provided on a scheduled fixed route to serve patrons "between" Firebaugh, Mendota, San Joaquin and surrounding unincorporated communities, and Kerman and "to" and "from" Fresno.

Recommendation:

It is recommended the Fresno COG Policy Board find that public transportation needs within the City of Kerman, its Sphere of Influence, and the surrounding area will be reasonably met. Service requirements contained in the Regional Transportation Plan will be satisfied.

H. City of Kingsburg

Two (2) FCRTA wheelchair lift-equipped vehicles are available for providing public transportation services to Kingsburg Area residents. These transit services are provided to the City of Kingsburg under an inter-agency services agreement with FCRTA. Service within the Sphere of Influence, and the surrounding area, are available on a demand-responsive basis during an approximately eight (8) hour service period, Monday through Friday, and eight (8) hours on Saturday utilizing one (1) vehicle.

The FCRTA also contracts to operate Southeast Transit as a multiple round trip general public commuter service, during an approximately eight and a half (8-1/2) hour period, Monday through Friday, using a lift-equipped vehicle, which may deviate from its route to pick-up disabled passengers. The service is provided on a scheduled fixed route to serve patrons "between" Kingsburg, Selma, and Fowler and "to" and "from" Fresno.

An additional vehicle was added in 2016 to provide service to the Kingsburg-Reedley College fixed-route service operating from 7:00am-4:35pm Monday through Friday to serve patrons between Kingsburg, Selma, Fowler, Parlier and Reedley.

Recommendation:

It is recommended the Fresno COG Policy Board find that public transportation needs within the City of Kingsburg, its Sphere of Influence, and the surrounding area will be reasonably met. Service requirements contained in the Regional Transportation Plan will be satisfied.

I. City of Mendota

The City of Mendota, under an inter-agency agreement with the FCRTA, provides demand-responsive service within its Sphere of Influence and the surrounding area using an FCRTA lift-equipped vehicle. This service is provided Monday through Friday for approximately eight (8) hours per day.

Firebaugh Transit has a second vehicle, which is available for inter-city trips between Firebaugh and Mendota during an approximate nine (9) hour period, Monday through Friday.

The FCRTA also contracts to operate Westside Transit as a multiple round trip general public commuter service, during an approximately eight and a half (8-1/2) hour period, Monday through Friday using a lift-equipped vehicle, which may deviate from its route to pick-up disabled passengers. The service is provided on a scheduled fixed route to serve patrons "between" Firebaugh, Mendota, San Joaquin and surrounding unincorporated communities, and Kerman and "to" and "from" Fresno.

Recommendation:

It is recommended the Fresno COG Policy Board finds that public transportation needs within the City of Mendota, its Sphere of Influence, and the surrounding area will be reasonably met. Service requirements contained in the Regional Transportation Plan will be satisfied.

J. City of Orange Cove

The City of Orange Cove, under an inter-agency services agreement with the FCRTA, provides transportation services within its Sphere of Influence and the surrounding area using an FCRTA lift-equipped vehicle. Orange Cove Transit operates on a demand responsive basis area for approximately nine (9) hours per day, Monday through Friday.

Orange Cove Transit also provides a lift-equipped vehicle for inter-city fixed-route service. The service is provided on a scheduled fixed route to serve patrons "between" Orange Cove, Reedley, Parlier, Sanger, and "to" and "from" Fresno. Multiple round trips are available on each service day. The inter-city service is provided during an approximately ten (10) hour period, Monday through Friday.

Recommendation:

It is recommended the Fresno COG Policy Board find that public transportation needs within the City of Orange Cove, its Sphere of Influence, and the surrounding area will be reasonably met. Service requirements contained in the Regional Transportation Plan will be satisfied.

K. City of Parlier

The City of Parlier, under an inter-agency services agreement with the FCRTA, currently operates a lift-equipped demand responsive service within its Sphere of Influence, and surrounding area using a wheelchair lift-equipped FCRTA vehicle. Service is currently provided, during an approximate eight (8) hour period, Monday through Friday.

The FCRTA also contracts to operate Orange Cove Transit as a multiple round trip public commuter service, during an approximately ten (10) hour period, Monday through Friday, using a lift-equipped vehicle, which may deviate from its route to pick-up disabled passengers. The service is provided on a scheduled fixed route to serve patrons "between" Orange Cove, Reedley, Parlier, and Sanger and "to" and "from" Fresno.

Recommendation:

It is recommended the Fresno COG Policy Board find that public transportation needs within the

City of Parlier, its Sphere of Influence, and the surrounding area will be reasonably met. Service requirements contained in the Regional Transportation Plan will be satisfied.

L. City of Reedley

The City of Reedley, through an inter-agency services agreement with the FCRTA, provides demand-responsive public transportation within its Sphere of Influence and the surrounding area, using four (4) vehicles on an eight (8) hour staggered basis during an approximate eight (8) hour service period, Monday through Friday, and one (1) vehicle on Saturdays during an approximate eight (8) hour period.

The FCRTA also contracts to operate Orange Cove Transit as a multiple round trip general public commuter service, during an approximately ten (10) hour period, Monday through Friday using a lift-equipped vehicle, which may deviate from its route to pick-up disabled passengers. The service is provided on a scheduled fixed-route to serve patrons "between" Orange Cove, Reedley, Parlier, and Sanger and "to" and "from" Fresno.

Recommendation:

It is recommended the Fresno COG Policy Board finds that public transportation needs within the City of Reedley, its Sphere of Influence, and the surrounding area will be reasonably met. Service requirements contained in the Regional Transportation Plan will be satisfied.

M. City of Sanger

To provide public transportation service within the Sanger Sphere of Influence and the surrounding area, the FCRTA, under an inter-agency services agreement, with the City of Sanger operates two (2) wheelchair accessible FCRTA vehicles that offer service in Sanger. The vehicles provide staggered service during an approximate eight (8) hour period Monday through Friday, and one (1) vehicle during an eight (8) hour period on Saturday.

FCRTA also contracts to operate Orange Cove Transit as a multiple round trip general public commuter service, during an approximate ten (10) hour period, Monday through Friday, using a lift-equipped bus, which may deviate from its route to pick-up disabled passengers. The service is provided on a scheduled fixed route to serve patrons "between" Orange Cove, Reedley, Parlier, and Sanger and "to" and "from" Fresno.

An additional vehicle began providing service between Sanger and Reedley College in September of 2014 to support a new training program to address a critical concern by manufacturers in Sanger who have been unsuccessful at finding skilled workers to employ and residents in Sanger who are underemployed or unemployed. One (1) vehicle provides route service during an eight (8) hour period, Monday through Friday.

Recommendation:

It is recommended that the Fresno COG Policy Board find that public transportation needs within the City of Sanger, its Sphere of Influence, and the surrounding area will be reasonably met. Service requirements contained in the Regional Transportation Plan will be satisfied.

N. City of San Joaquin

The City of San Joaquin, under an inter-agency agreement with the FCRTA, provides for demand-responsive Intra-City service within their Sphere of Influence and surrounding area. Inter-community service is also provided between the unincorporated communities of Cantua Creek, El Porvenir, Halfway, Three Rocks, and Tranquility. Inter-City service to Kerman is also available. As a result of low ridership and the COVID-19 pandemic this service transitioned to a demand response rural transit operation in June 2020, Monday through Friday using FCRTA lift equipped vans.

The FCRTA contracts to operate Westside Transit as a multiple round trip general public commuter service, during an approximate eight and a half (8-1/2) hour period, Monday through Friday, using a lift-equipped vehicle, which may deviate from its route to pick-up disabled passengers. The service is provided on a scheduled fixed route to serve patrons "between" Firebaugh, Mendota, San Joaquin and surrounding unincorporated communities, and Kerman and "to" and "from" Fresno.

Recommendation:

It is recommended the Fresno COG Policy Board find that public transportation needs within the City of San Joaquin, its Sphere of Influence, and the surrounding area with its identified unincorporated communities will be reasonably met. Service requirements contained in the Regional Transportation Plan will be satisfied.

O. City of Selma

The City of Selma, under an inter-agency agreement with the FCRTA, provides for demand-responsive and fixed-route Intra-City service within their Sphere of Influence and the surrounding area.

This service utilizes three (3) FCRTA wheelchair accessible vehicles. It operates three (3) vehicles on a demand-responsive basis for eight (8) hours each on a staggered basis, and one (1) for four (4) hours for lunchtime driver relief, Monday through Friday, during an approximate eight (8) hours service day. Saturday demand-responsive services are provided with a single (1) vehicle during an approximate eight (8) hour service period.

The FCRTA also contracts to operate Southeast Transit as a multiple round trip general public commuter service, during an approximate eight and a half (8-1/2) hour period, Monday through Friday using a lift-equipped vehicle, which may deviate from its route to pick-up disabled passengers. The service is provided on a scheduled fixed route to serve patrons "between" Kingsburg, Selma, and Fowler and "to" and "from" the Fresno-Clovis Metropolitan Area (FCMA).

Recommendation:

It is recommended the Fresno COG Policy Board find that public transportation needs within the City of Selma, its Sphere of Influence, and the surrounding Area will be reasonably met. Service requirements contained in the Regional Transportation Plan will be satisfied.

P. Fresno County

Fresno County financially participates through the Fresno County Rural Transit Agency for

provision of service to unincorporated area residents within the Spheres of Influence and the surrounding areas of the thirteen (13) rural cities and two dozen unincorporated communities situated on established fixed routes.

Fresno County also provides the funding for six (6) other unincorporated area transit services.

Auberry Transit is provided through an inter-agency service agreement with FCRTA. The service area includes the communities of Alder Springs, Auberry, New Auberry, the Big Sandy Indian Rancheria, Burrough Valley, Cold Springs Indian Rancheria, Jose Basin, Marshall Station, Meadow Lakes, Mile High, Prather, Sycamore, and Tollhouse. A lift- equipped vehicle provides approximately seven (7) hours of service per day, Monday through Friday. A second Auberry Transit vehicle is to provide “lifeline” inter-city service from the foothill communities and through Friant and the Table Mountain Indian Rancheria to the Fresno-Clovis Metropolitan Area, one (1) day a week during an eight (8) hour service period.

Del Rey Transit operates as a general public demand-responsive service. The FCRTA continues to fund the service four (4) hours per service day and Fresno County TDA monies fund the remaining four (4) hours. The service is under contract for driver services through the FCRTA and continues to be available during an approximate eight (8) hour period Monday through Friday. The operation will continue to maintain priority service to seniors attending the mid-day Hot Meal Nutrition Program. The service transports passengers within the community on a shared ride basis; arranges passenger grouping for trips to Sanger; and transfers passengers in Sanger to access Orange Cove Transit for service to Fresno, Parlier, Reedley, and Orange Cove. As of April 1, 2019, the service was modified to 7 hours per weekday and 5 hours on Saturday on a 3-month demonstration period to accommodate requests for Saturday service from Del Rey residents.

Laton Transit continues to be provided by the FCRTA through an ongoing inter-agency services agreement with Kings Area Rural Transit (KART). Round trip, inter-community service between the unincorporated Community of Laton and the City of Hanford, in Kings County, is available Monday through Friday. An existing inter-County service by KART from Hanford through Laton and then Selma (Kaiser Clinic) and Hospitals in Fresno and the Central Valley Children’s Hospital in Madera County is provided Monday through Friday.

Rural Transit between remote areas of Fresno County has been mentioned in the Regional Transportation Plan and Rural Short Range Transit Plan (SRTP) for many years. The Measure-C Expenditure Plan referenced the concept for funding and implementation. Service beyond the current transit service areas associated with incorporated cities has been difficult to justify. Four (4) vehicles were purchased to facilitate the operation of three (3) in regular services, Monday through Friday, with the fourth (4th) reserved as a back-up vehicle. The adopted Rural SRTP reflects the demand-responsive operation to be available on a twenty-four (24) hour prior reservation basis. Transfers to existing operations have eliminated service duplications. This service provides lifeline transit services to the unincorporated communities in Fresno County.

FCRTA deployed the Rural Transit Expansion in October 2022 with a Microtransit Pilot Project in the unincorporated community of Biola. This service is a demand response service providing transportation from the community of Biola to the Fresno Clovis Metropolitan areas. This service is a continuation of a demand response service within the Biola community that was previously operated by the CTSA contractor, Inspiration Transportation. This service ceased in September 2022. This is a service operated by MV Transportation, started in operation in December 2022. This service is operated with one (1) electric sedan vehicle. FCRTA installed a level 2 charging

unit at the Biola Community Services district allowing the vehicle to charge when the vehicle is not being operated. FCRTA subcontractor, MV Transportation, hired a local resident as a trained and dedicated driver for the service. The Biola Micro-transit is a demo program and may be expanded to other unincorporated areas using the same model, if successful.

Recommendation:

It is recommended that the Fresno COG Policy Board finds that there are seven (7) unmet transit needs, one (1) assigned to Fresno County alone, one (1) shared with the City of Clovis, and one (1) shared with the City of Fresno and City of Clovis that are not reasonable to meet. that public transportation needs within the unincorporated portions of the County of Fresno will be reasonably met. Service requirements contained in the Regional Transportation Plan will be satisfied.

Additional Information

It should be noted additional transit needs are being met through three (3) other programs, which have been implemented with Measure – C funds. The Fresno COG administers the programs:

- Carpooling - A subsidized carpooling program is available for individuals willing to share rides with others. A computerized program may assist individuals in making successful contacts to form successful arrangements to share rides conveniently.
- Commuter Vanpooling – A subsidized vanpooling program is available for a group of individuals who may have common interests in commuting for employment or schooling at City Colleges and Universities. Several commercial entities have complete programs to provide vans ranging from seven (7) to fifteen (15) passenger capacities. A lead and back-up driver volunteer to make arrangements to transport the group as needed. The vehicle, fuel, maintenance, and insurance are covered. Participants share in a portion of the costs. Several hundred vehicles are currently in operation, and more are being formed on a regular basis.
- Farm Labor Vanpooling – A subsidized farm labor vanpooling program facilitates group transportation to field and packing facilities. The program is flexible to meet the seasonal needs of the workers, originating in Fresno County. Fifteen (15) passenger vans accommodate seven (7) to fifteen (15) individuals. A lead and back-up driver volunteer to make arrangements to transport the group as needed. The vehicle, fuel, maintenance, and insurance are covered. Participants share in a portion of the costs. Several hundred vehicles are currently in operation, and more are being formed on a regular basis.

The re-authorization for Measure C was taken before voters on November 2022 and defeated. As a result, the future of the programs funded by Measure C, and the initiative itself, are unknown at the time of this writing. Re-authorization for Measure C is being taken before voters again in November 2026.

Individuals and groups desiring to know more about these programs should call 559-441-RIDE (7433) or contact www.valleyrides.com for more information.

Appendix A - Demographic Information

Transit Dependent Groups

Per the Transportation Development Act, Unmet Transit Needs findings must include an annual assessment of the size and location of identifiable groups likely to be transit-dependent, including but not limited to, the elderly, the disabled, including individuals eligible for paratransit and other special transportation services pursuant to Section 12143 of Title 42 of the United States Code, and persons of limited means, including, but not limited to, recipients under the CalWORKs program.

For the purposes of this document:

- The elderly are considered to be individuals aged 65 years old and older.
- The term "disability" refers to people who, because of physical or mental impairment, are unable to drive automobiles or use public transit, which is not specifically tailored to meet their needs.
- People of limited means are considered as having incomes below the poverty threshold as defined by the federal government.

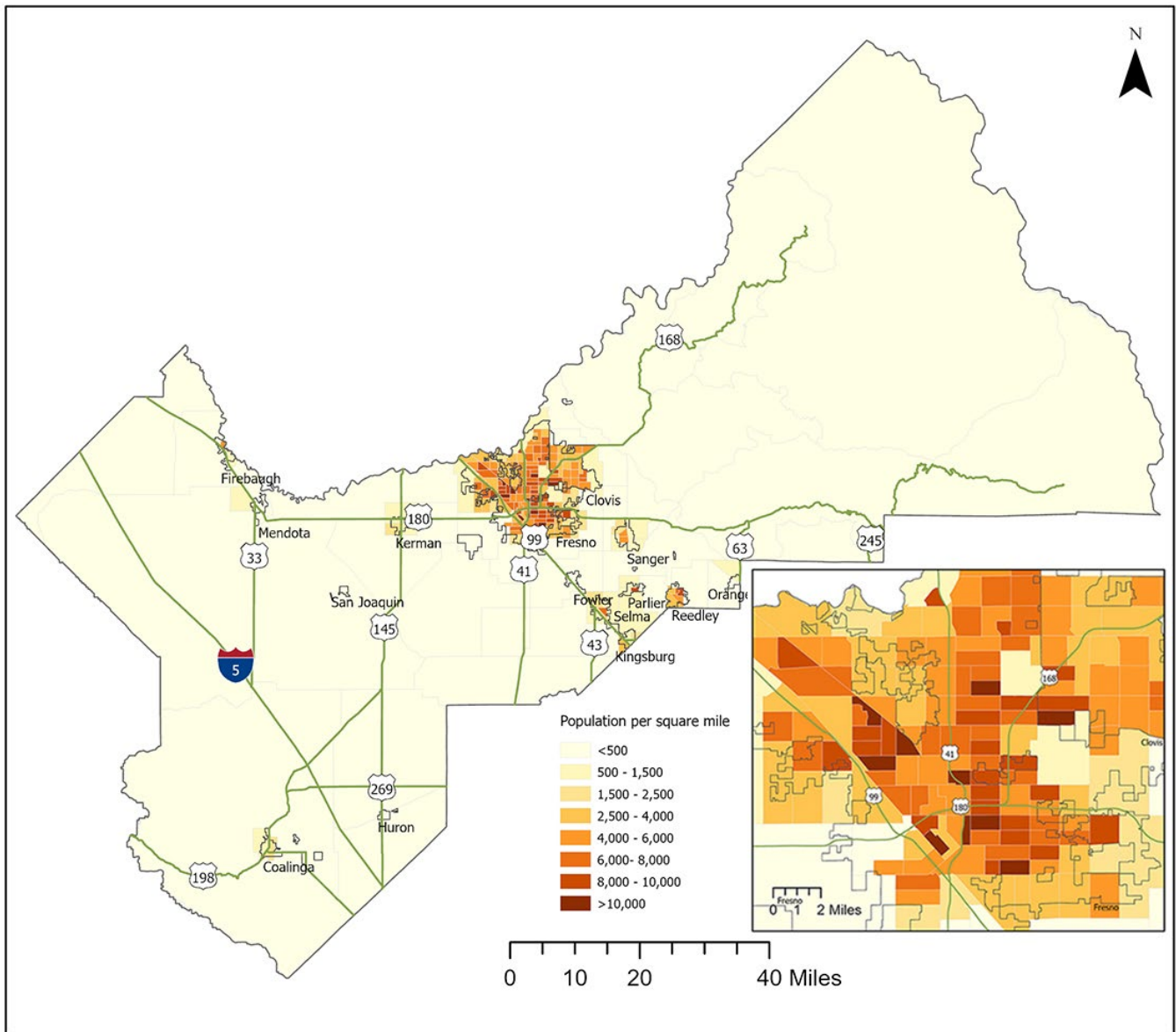
Demographic Data - Charts and Highlights

The determination of the size and location of identifiable groups likely to be “transit-dependent” is based on the American Community Survey, 2020 Census, and other pertinent data. The demographic data relevant to determining unmet transit needs in Fresno County is presented in the form of tables and maps.

The American Community Survey (ACS) replaced the decennial census long form in 2010. The ACS now collects detailed questions about socioeconomic and housing characteristics on an annual basis. The function of the decennial census will be to provide counts of people for the purpose of congressional apportionment and legislative redistricting. The primary purpose of the ACS is to measure the changing social and economic characteristics of the U.S. population. The use of the ACS data will provide “snapshots” of our region’s socioeconomic characteristics. The decision to select one-year, three-year, or five-year ACS “snapshots” is dependent on whether the intent is to reflect the most current data (e.g., one-year ACS) or a statistically more accurate “snapshot” (e.g., lower margin of error) over a larger period of time.

In this section, Table 2 presents an overview of the population in Fresno County. Figure 2 illustrates graphically how the population is dispersed throughout the incorporated and unincorporated areas in Fresno County.

Figure 1
Fresno County Population Density



Data source: 2020-2024 American Community Survey

Table 5 shows the total population percent change for years 2023-2025. The most rapid population increase during this time occurred in the Cities of Huron, with growth of 12.66%, followed by Fowler with growth of 6.59%. Other Fresno County cities with population growth between 2023 and 2025 were Reedley (4.35%), Clovis (3.30%), Kerman (3.06%), Kingsburg (2.56%), Sanger (2.33%), Orange Cove (2.24%), Firebaugh (2.23%), Fresno (2.10%), Coalinga (2.02%), Mendota (1.74%), Parlier (1.31%), Selma (0.54%), and San Joaquin (0.50%). Growth in the rest of Fresno County was 0.45% for the period with none of the fifteen incorporated cities experiencing a population decline during the period.

The Cities of Fresno and Clovis both have a population of more than 100,000 people. Pursuant to Senate Bill 716 (enacted 2009), cities with a population of 100,000 or more within a county that has a population

of 500,000 or more will be required to expend 100% of the Local Transportation Funds (LTF) apportionment for public transit purposes. The Cities of Fresno and Clovis have already been complying with this requirement.

Population forecasts suggest that none of the other incorporated cities in Fresno County will exceed 100,000 in the next 20 years and therefore will be exempt from the provisions of Senate Bill 716. The California Department of Finance annual city and county population estimates will be used to identify when the population threshold has been met. SB 716 represents a fundamental change in the way public transit will be financed in the future.

**Table 5
Total Population Percent Change, Years 2023-2025**

Jurisdiction	Population			% Change 2023 - 2025
	2023	2024	2025	
City of Clovis	125,000	127,674	129,121	3.30%
City of Coalinga	17,259	17,252	17,608	2.02%
City of Firebaugh	8,524	8,510	8,714	2.23%
City of Fowler	7,193	7,436	7,667	6.59%
City of Fresno	545,585	552,751	557,032	2.10%
City of Huron	6,153	6,421	6,932	12.66%
City of Kerman	17,014	17,403	17,535	3.06%
City of Kingsburg	12,953	13,167	13,285	2.56%
City of Mendota	12,493	12,598	12,710	1.74%
City of Orange Cove	9,504	9,622	9,717	2.24%
City of Parlier	14,459	14,535	14,649	1.31%
City of Reedley	25,494	25,950	26,603	4.35%
City of San Joaquin	3,636	3,653	3,654	0.50%
City of Sanger	26,421	26,652	27,037	2.33%
City of Selma	24,453	24,487	24,585	0.54%
Balance of Fresno County	159,492	160,009	160,204	0.45%
Total	1,015,633	1,028,120	1,037,053	2.11%

Data Source: State of California, Department of Finance, E-4(2025)

Table 6 presents the 2020-2024 American Community Survey (ACS 5-year) data on population by age and income characteristics. This data is important to this analysis because studies have shown that age and income have a high correlation with automobile usage and transit dependency. Persons aged 65 and over are separated as a subset of the total population figures. In some jurisdictions, these individuals become eligible for transit services solely based on their age. In others, they qualify for reduced fares because of their age. In either case, they are recognized as a select group of people who may have special transportation needs met through public transportation.

Poverty statistics in ACS products adhere to the standards specified by the Office of Management and Budget in Statistical Policy Directive 14. The Census Bureau uses a set of dollar value thresholds that

vary by family size and composition to determine who is in poverty. Further, poverty thresholds for people living alone or with nonrelatives (unrelated individuals) vary by age (under 65 years or 65 years and older). The poverty thresholds for two-person families also vary by the age of the householder. If a family's total income is less than the dollar value of the appropriate threshold, then that family and every individual in it are in poverty. Similarly, if an unrelated individual's total income is less than the appropriate threshold, then that individual is in poverty.

Table 6
Age and Income, Year 2020-2024

Jurisdiction	Population for whom poverty status is determined	Persons age 65 years+		Persons in poverty		Persons age 65 years+ & in poverty	
		Population	Percent	Population	Percent	Population	Percent
City of Clovis	123,701	16,973	13.7%	9,894	8.0%	1,458	1.2%
City of Coalinga	13,139	1,598	12.2%	2,846	21.7%	352	2.7%
City of Firebaugh	8,392	963	11.5%	3,070	36.6%	114	1.4%
City of Fowler	7,050	758	10.8%	1,364	19.3%	55	0.8%
City of Fresno	536,829	65,848	12.3%	107,783	20.1%	10,143	1.9%
City of Huron	6,519	296	4.5%	1,984	30.4%	69	1.1%
City of Kerman	16,802	1,610	9.6%	3,581	21.3%	217	1.3%
City of Kingsburg	12,677	2,531	20.0%	1,365	10.8%	420	3.3%
City of Mendota	12,480	1,066	8.5%	3,435	27.5%	286	2.3%
City of Orange Cove	9,678	727	7.5%	3,291	34.0%	339	3.5%
City of Parlier	14,477	1,280	8.8%	3,927	27.1%	289	2.0%
City of Reedley	25,272	2,515	10.0%	5,637	22.3%	530	2.1%
City of San Joaquin	3,708	274	7.4%	1,522	41.0%	77	2.1%
City of Sanger	26,590	2,769	10.4%	4,188	15.8%	370	1.4%
City of Selma	24,356	3,101	12.7%	4,636	19.0%	804	3.3%
Balance of Fresno County	157,445	26,538	16.9%	24,439	15.5%	3,153	2.0%
Total	999,115	128,847	12.9%	182,962	18.3%	18,676	1.9%

Data Source: United States Census Bureau, 2024 American Community Survey 5-Year Estimates, S1701

Table 7 provides data on individuals with disabilities by gender and age. This information is from the 2020-2024 ACS data and includes non-institutionalized persons aged five and older who have a "disability." Individuals were asked if they, or others in the household, had a health condition that has lasted for six or more months, making it difficult to go outside of the home alone. Persons that have such difficulty because of a health condition are said to have a mobility limitation. Increased public transportation would be an asset to those who have mobility limitations.

Table 7
Disability Status by Age by Sex, Year 2024

Age	Male		Female		Total	
	Persons with a disability	Percent with a disability	Persons with a disability	Percent with a disability	Persons with a disability	Percent with a disability
Under 5 years	819	2.3%	87	0.2%	906	1.3%
5 to 17 years	8,657	8.0%	5,363	5.2%	14,020	6.6%
18 to 64 years	34,005	11.4%	34,853	11.8%	68,858	11.7%
65 years and over	23,035	39.4%	26,872	38.2%	49,907	39.6%
Total	66,516	13.3%	67,175	13.3%	133,691	13.3%

Data Source: United States Census Bureau, 2024 American Community Survey 5-Year Estimates, B18101

Table 8 shows that 66,516 males, or 13.3% of the male population within Fresno County meet the definition of a person having a disability. In contrast, 67,175 females, or 13.3% of the female population within Fresno County meet this definition.

Table 8
Employment Status by Disability Status, 2024

Disability Status	Civilian noninstitutionalized population 18 to 64 years					
	In the labor force				Not in labor force	
	Employed		Unemployed			
	Population	Percent	Population	Percent	Population	Percent
With a disability	25,846	37.5%	4,866	7.1%	38,146	55.4%
No disability	381,186	72.7%	33,280	6.3%	110,045	21.0%
Total	407,032	68.6%	38,146	6.4%	148,191	25.0%

Data Source: United States Census Bureau, 2024 American Community Survey 5-Year Estimates, C18120

Table 9 expands on the number of individuals in Fresno County age 18, and over by their disability and employment status. Looking at the Civilian noninstitutionalized population between the ages of 18 and 64, which numbers 593,369 (407,032 + 38,146 + 148,191), the data shows that there are 407,032 persons, or 68.6% of which, that are employed. Of this number, 25,846 or 37.5% have a disability, whereas 381,186 or 72.7% of those employed do not have a disability.

Of the Civilian noninstitutionalized population between the age of 18 and 64 within the labor force, 38,146 or 6.4% are unemployed. Of this number, 4,866, or 7.1% are disabled, whereas 33,280, or 6.3% are able-bodied.

Of the Civilian non-institutionalized population between the age of 18 and 64 not within the labor force, 148,191, or 25.0% are not in the labor force. Of this number, 38,146, or 55.4% are disabled, and 110,045, or 21.0% are able bodied.

Fresno COG's definition of transit-dependent focuses on individuals who, by virtue of their age, income, or disability, are not adequately served by the automobile. Information from the last available version of a summary from Caltrans entitled "Travel and Related Factors in California" was used as a foundation for identifying the incidence of individuals that are transportation dependent.

Table 8 below shows the Population of driving Age in Fresno County for 2024 as 734,206 persons.

Driving age is defined as people between '16-18', and '18+'.

**Table 9
Population of Driving Age in Fresno County, Year 2020-2024**

Age	Population	Percent
0-15	248,320	24.4%
16-17	34,199	3.4%
18+	734,206	72.2%
Total	1,016,725	100.0%

Data Source: United States Census Bureau, 2024 American Community Survey 5-Year Estimates, DP05

Table 10 below shows that between 2021 and 2024, the number of valid driver licenses in Fresno County increased from 619,182 in 2021 to 648,263 in 2024. Between 2023 and 2024, the number of driver's licenses outstanding increased to 648,253, an increase of 14,328 driver licenses outstanding, from the previous year.

**Table 10
Percent of Licensed Drivers of Driving Age, Population, Year 2020-2024**

	2021	2022	2023	2024
Valid driver licenses	619,182	627,707	633,935	648,263
Percent of licensed drivers of driving-age population	81.3%	81.7%	82.1%	83.0%

Data Source: United States Census Bureau, American Community Survey 1-Year Estimates, California Department of Motor Vehicles, Driver Licenses Outstanding by County

Table 11 below shows the number of vehicles and licensed drivers per household. It shows that there are 331,460 households with an average size of 3.03 individuals with 1.93 average vehicles available per household and 1.92 average drivers per household. The percent of households that have no vehicles available is 8.2%

**Table 11
 Occupied Household / Vehicles in Fresno County, Year 2020-2024**

	Estimates
Households	331,460
Average household size	3.03
Percent of no vehicle available households	8.2%
Average vehicles available per household*	1.93
Average drivers per household	1.96

Data Source: United States Census Bureau, 2023 American Community Survey 1-Year Estimates, B25044,S1101

California Department of Motor Vehicles, Driver Licenses Outstanding by County

* *Estimated with assumption that vehicles available for household with "5 or more vehicles available" in ACS is 5.*

DRAFT

Appendix B – Unmet Transit Needs Assessment Process

For the FY2026-27 meeting cycle, public outreach took place virtually and face-to-face. Specifically, there were five in-person public events, a single virtual public event, and the public hearing. Of the five in-person events, three took place in urban locations and two in rural locations. This does not include the public hearing, which was held in the City of Fresno, the fourth urban location. Public outreach meetings in rural areas were held in Sanger and Kerman. All the in-person public outreach meetings were held on weekday evenings. The single virtual public outreach meeting took place on Saturday, February 28, 2026.

Tasks carried forward from the FY2026-27 UTN cycle include the online survey and virtual meetings.

The public outreach process for the FY2026-27 Unmet Transit Needs Assessment was run through publicinput.com, a community engagement platform to manage the public outreach process for State and local governments. The platform was used to run the public survey at the heart of the public outreach process for the UTN. It was also integrated with FCOG social media accounts to track comments received through FCOG social media channels.

The Survey

As with the previous cycle, the survey was designed to collect transit-related information from transit riders and stakeholders that pertain to the Unmet Transit Needs assessment. The survey was released on January 21, 2026, and closed April 4, 2026. As of May 27, 2026, seventy-five participants left 255 responses and 115 comments, many of which could be consolidated as they were submitted by the same participant, illegible, or spam. When reviewed by participating transit agencies, only 34 of these comments provided any information that could be used within the UTN. The results of the remaining surveys were not included since they did not contain any informational value.

While screenshots of the surveys are shown below, the survey questions are as follows:

Question #1 – Do you use public transportation or social services transportation?

- Yes
- No

Question #2. – Are there any Fresno County locations/destinations you would like to access by transit or social service transportation that are currently not being served?

- Yes
- No

If yes, please list locations/destinations.

Question #3. – If you answered “yes” to question #2, please answer the questions below.

- a. What is your zip code?
- b. Where are you going (what is your destination address or nearest cross street)?
- c. Where are you coming from (what is your originating address, nearest cross streets)?
- d. What days do you need service? (For example, weekdays, weekends, or both)
- e. Which transit system does your feedback refer to?

Fresno Area Express
Handy Ride, City of Fresno’s paratransit service
Clovis Stageline
Clovis Round-Up, City of Clovis’ paratransit service
Fresno County Rural Transit Agency (FCRTA)
A social service agency provider

Question #4. – Do you have any additional comments or feedback?

In-Person Public Meetings

Five in-person public meetings were held within Fresno County: three in the City of Fresno, one in the City of Clovis, and two in smaller cities in Fresno County, specifically Kerman and Reedley. One of the two events within the City of Fresno, took place on a Saturday morning, at 11:00 AM to accommodate people whose schedule would not allow them to attend any of the other in-person public events.

Virtual Events

A single virtual event took place on Saturday, February 28, 2026, at 11:00 AM.

Comment Cards

Comment cards were made available in English and Spanish, distributed to the Unmet Transit Needs mailing list, and available online for download.

Email

People could also submit feedback via email through the Public Input platform at utn2026@publicinput.com.

Voicemail

Comments were received via voicemail by calling (855) 925-2801, entering code 5248 when prompted, and then leaving their comments.

Public Hearing

The Public Hearing for the FY2026–27 Unmet Transit Needs Assessment took place on Tuesday, June 2, 2026, at 5:30 PM in the Sequoia Room at the offices of Fresno COG, located at:

2035 E. Tulare Ave, Ste. 201,
Fresno, CA 93721

Exhibit A

**Social Services Transportation Advisory Council
Membership List
Updated February 2026**

Potential Transit User 60 Years of Age or Older (minimum of 1)		
Appointment	Resident of/Geographic Representation	Term Expires

Representatives of the Local Social Service Providers for Seniors (minimum of 2)		
Appointment	Resident of/Geographic Representation	Term Expires

Potential Transit User Who Is Disabled (minimum of 1)		
Appointment	Resident of/Geographic Representation	Term Expires
Yonas Paulos	Fresno / Fresno County	1 - 2027

Representative of the Local Social Service Provider for Disabled (minimum of 2)		
Appointment	Resident of/Geographic Representation	Term Expires
Chenier Derrick	Fresno/Fresno County	6-2026
Rebecca Donabed	Tulare / Fresno County	2-2028

Representative of a Local Social Service Provider for Persons of Limited Means (minimum of 1)		
Appointment	Resident of/Geographic Representation	Term Expires
Katherine Martindale, Fresno County	Fresno/Fresno County	6-2026

Representatives from the Local Consolidated Transportation Service Agency (minimum of 2)		
Appointment	Resident of/Geographic Representation	Term Expires
Bethany Berube, Clovis Transit	Clovis/Fresno County	1-2027
Adam Tsudama, FEOC/CTSA	Fresno/Fresno County	1-2028
Janelle Del Campo, FCRTA	Fresno/Fresno County	1-2028
Darlene Christiansen, FAX	Fresno/Fresno County	6-2027

Representatives of General Public, who use Public Transit		
Appointment	Resident of/Geographic Representation	Term Expires
Matthew Gilliam	Fresno/Fresno County	5-2028

Exhibit A-1

List of Acronyms

Acronym	Agency Name
ACS	American Community Survey
ADA	American Disabilities Act
CCNF	Central California Nikkei Foundation
COFCG	Council of Fresno County Governments (old name of Fresno COG)
COG	Council of Governments
CTSA	Consolidated Transportation Service Agency
DMV	Department of Motor Vehicles
FAX	Fresno Area Express
FCHSS	Fresno County Health and Social Services
FCMA	Fresno County Metropolitan Area
FCRTA	Fresno County Rural Transit Agency
FEOC	Fresno Economic Opportunities Commission
FTA	Federal Transit Administration
KART	Kings Area Rural Transit
LTF	Local Transportation Fund
OPB	Operations Program and Budget
PUC	Public Utilities Commission
RTP	Regional Transportation Plan
RTPA	Regional Transportation Planning Agency
SB	Senate Bill
S RTP	Short Range Transit Plan
SSTAC	Social Services Transit Advisory Committee
TDA	Transit Development Act
UMTA	Urban Mass Transit Agency
UTN	Unmet Transit Needs
VCH	Valley Children's Hospital

Exhibit B

FY2026-27 Unmet Transit Needs Process Outreach Schedule – Fresno

Item	Date	Cost	Reach
FresnoCOG.org webpages: Public Transit Planning, Get Involved and calendar listings and Publicinput.com	January 2026	\$0	Public input – 3,351 impressions.
Constant Contact Emails			
CC Email send #1	February 7, 2025	\$0	
CC Email resend to “non-openers”	February 11, 2025	\$0	
Other			
Hard copy flyers mailed to database	February 17, 2026 February 26, 2026	\$TBD	430 2-sided bilingual color copies, envelopes
Flyers posted at 16 Fresno County Department of Social Services facilities.	February 23, 2026	\$0	
Social Media posts (2)	March 2, 2026 April 29, 2026	\$0	
Meeting agendas (publicly published): SSTAC TTC PAC Policy Board	Updates posted in the February, March, April and June 2026 meeting cycles.	\$0	Published to the Fresno COG website one calendar week before each meeting with notification sent to the Fresno COG email list.
Public Hearing Notices	March 29, 2026	\$924.24	English/Spanish, Fresno Bee
Public Hearing Notices (corrected)	April 29, 2026	\$1,053.58	English/Spanish, Fresno Bee
Publicinput.com survey		\$0	2,418 views 162 participants 453 responses 167 comments 31 subscribers
Totals	–	\$1,977.82	

The Unmet Transit Needs survey consists of seven questions or ‘comments’, while comments received through the Publicinput.com platform are counted individually. For the purposes of the comments received for the Unmet Transit Needs, comments are aggregated and addressed by submitting IP address, location IP address, and by submission day and times to match transit riders to comments.

DRAFT

Exhibit B-1

Unmet Transit Needs Request Flyer in English FY2026-27

Fresno County Unmet Transit Needs Public Comments Process

Do you or someone you know have a public transit need that is not being met?

The Fresno Council of Government (FCOG) Social Services Transportation Advisory Committee (SSTAC) would like to hear from you!



There are several ways to participate and comment:

Online survey :

Click [here](#) to take the survey in English!
Or scan the QR code to the right!



Text :

Text **Utn2026** to **73224** to take the survey

Call :

Call **(855) 925-2801** and enter “ **5248** ” when prompted then leave us a voicemail with your comments

Attend meetings :

Attend one of eight public events: six in-person, one virtual, and a public hearing where you can interact with transit providers and staff directly.

Rural Eastside Fresno County

Thursday, February 19, 2026, at
5:00 - 6:30 PM
Presence at the FCOG RTP/SCS
Workshop at the Reedley Planning
Commission Meeting
845 G Street
Reedley, CA 93654

Rural Westside Fresno County

Tuesday, February 24, 2026, at
6:00 - 7:00 PM
FCOG RTP/SCS Meeting at the
Kerman Community Teen Center
15101 W. Kearney Blvd.,
Kerman, CA 93630

Virtual Meeting

Saturday, February 28, 2026, at
11:00 AM

Via ZOOM:
<https://usu6web.zoom.us/j/81749685269>

City of Fresno, No. 1

Tuesday, March 3, 2026, at
5:30 - 6:30 PM
Betty Rodriguez Community Library
Meeting Room
3040 N. Cedar Ave.,
Fresno, CA 93703

City of Fresno, No. 2

Wednesday, March 4, 2026, at
5:30 - 6:30 PM
Sunnyside Regional Library,
Community Center Conference Room
5566 E Kings Canyon Road
Fresno, CA 93727

City of Clovis

Thursday, March 5, 2026, at
5:30 - 6:30 PM
City of Clovis, Clovis Transit Center
785 3rd Street
Clovis, CA 93612

Public Hearing

Thursday, April 30, 2026, at
5:30 PM
Fresno Council of Governments,
Sequoia Room
2035 Tulare Street, Ste. 201,
Fresno, CA 93721



Email :

Email staff your comments at utn2026@publicinput.com

Representatives or individuals with disabilities should contact Fresno COG at (559) 233-4148, at least 3 days in advance, to request auxiliary aids and/or transition services necessary to participate in the public meeting.

Exhibit B-2

Unmet Transit Needs Flyer and Comments Form in Spanish, FY2026-27

PROCESO DE COMENTARIOS PÚBLICOS DE NECESIDADES DE TRÁNSITO NO SATISFECHAS DEL CONDADO DE FRESNO

¿Usted o alguien que conoce tiene una necesidad de transporte público que no se está satisfaciendo?
¡El Comité Asesor de Transporte de Servicios Sociales (SSTAC) del Consejo de Gobierno de Fresno (FCOG) desea saber de usted!



Hay varias formas de participar y comentar:

Encuesta en línea :

Haga clic [aquí](#) para responder a la encuesta en español.
O [escanee el código QR de la derecha.](#)



Texto :

Envía **Utn2026esp** al **73224** para participar en la encuesta

Deje un mensaje de correo de voz:

Llame al **(855) 925-2801** e introduzca **"5248"** cuando se le solicite. A continuación, déjenos un mensaje de voz con sus comentarios.

Asistir a las reuniones:

Asista a uno de los ocho eventos públicos: seis presenciales, uno virtual y una audiencia pública donde podrá interactuar con proveedores de tránsito y personal directamente.

Zona rural del este del condado de Fresno

Jueves, 19 de febrero de 2026, de 17:00 a 18:30 h
Presencia en el taller FCOG RTP/SCS en la reunión de la Comisión de Planificación de Reedley
845 G Street, Reedley, CA 93654

Zona rural del oeste del condado de Fresno

Martes, 24 de febrero de 2026, 18:00 – 19:00 h
Reunión de FCOG RTP/SCS en el Centro Comunitario para Adolescentes de Kerman 15101 W. Kearney Blvd., Kerman, CA 93630

Reunión virtual

Sábado, 28 de febrero de 2026, 11:00 a. m.

Vía ZOOM: <https://us06web.zoom.us/j/81749685269>

Ciudad de Fresno, n.º 1

Martes, 3 de marzo de 2026, 17:30 a 18:30
Biblioteca Comunitaria Betty Rodríguez, Sala de Reuniones
3040 N. Cedar Ave
Fresno, CA 93703

Ciudad de Fresno, n.º 2

Miércoles, 4 de marzo de 2026, 17:30 a 18:30 h
Biblioteca Regional de Sunnyside, Sala de Conferencias del Centro Comunitario
5566 E. Kings Canyon Road,
Fresno, CA 93727

Ciudad de Clovis, n.º 1

Jueves, 5 de marzo de 2026, 17:30 a 18:30
Ciudad de Clovis, Centro de Tránsito de Clovis
785 3rd St.,
Clovis, CA 93612

Audiencia Pública

Consejo de Gobiernos de Fresno,
Sala Sequoia
2035 Tulare Avenue, Ste. 201
Fresno, CA 93630



Correo electrónico al personal: Envíe sus comentarios a utn2026@publicinput.com

Para obtener más información sobre el proceso de Necesidades de Transporte Insatisfechas 2026-27 y ver los detalles de la reunión, haga [clic aquí](#) o escanee el código QR de arriba. Llame al (559) 233-4148 para más información.

Exhibit B-3

Unmet Transit Needs Survey in English, FY2026-27



SURVEY: Unmet Transit Needs 2026

Welcome!

The Unmet Transit Needs (UTN) assessment is held each year to identify unmet transit needs that are “reasonable to meet” and not already being met through existing public transit services with available funding. Public input and feedback are a critical part of the UTN process. In partnership with local transit providers, Fresno COG is collecting public comments on Unmet Transit Needs for Fresno County. All comments are due by April 3, 2026 at 5:00 p.m. and will be considered part of the 2026 UTN assessment.

Welcome

Step 2

Step 3

Thank you!

1. Do you currently use public transit or social service transportation?

2. What is your home zip code?

3. Are there any places in Fresno County you want to reach using public transportation or social services, but there's no service available?

Continue

SURVEY: Unmet Transit Needs 2026

Welcome!

The Unmet Transit Needs (UTN) assessment is held each year to identify unmet transit needs that are “reasonable to meet” and not already being met through existing public transit services with available funding. Public input and feedback are a critical part of the UTN process. In partnership with local transit providers, Fresno COG is collecting public comments on Unmet Transit Needs for Fresno County. All comments are due by April 3, 2026 at 5:00 p.m. and will be considered part of the 2026 UTN assessment.

Welcome

Step 2

Step 3

Thank you!

4. What and where are the places?

5. What days do you need service to the places you listed?

6. What times do you need service to the locations you listed?

7. Which bus or transit system operates in the area where your suggested location is? Select all that apply

Continue

SURVEY: Unmet Transit Needs 2026

Welcome!

The Unmet Transit Needs (UTN) assessment is held each year to identify unmet transit needs that are “reasonable to meet” and not already being met through existing public transit services with available funding. Public input and feedback are a critical part of the UTN process. In partnership with local transit providers, Fresno COG is collecting public comments on Unmet Transit Needs for Fresno County. All comments are due by April 3, 2026 at 5:00 p.m. and will be considered part of the 2026 UTN assessment.

Welcome > Step 2 > **Step 3** > Thank you!

Do you have other needs or suggestions? Please share them.

If you would like us to contact you, please include your name and contact information below. If not, click 'Continue'.

First Name

Last Name

Email

Phone

How we respect your privacy [i](#)

Save

Continue

SURVEY: Unmet Transit Needs 2026

Welcome!

The Unmet Transit Needs (UTN) assessment is held each year to identify unmet transit needs that are “reasonable to meet” and not already being met through existing public transit services with available funding. Public input and feedback are a critical part of the UTN process. In partnership with local transit providers, Fresno COG is collecting public comments on Unmet Transit Needs for Fresno County. All comments are due by April 3, 2026 at 5:00 p.m. and will be considered part of the 2026 UTN assessment.

Welcome



Step 2



Step 3



Thank you for taking time to share your ideas with us.

You may leave a voicemail for staff with more Unmet Transit Needs comments. Call 855-925-2801, enter **project code 5248** when prompted, then speak to leave a voicemail.

If you have any questions about the process and would like to speak directly to transit agency representatives, please join us at one of the planned virtual events listed [at this link](#), or email Harold Sobrado at Harold.sobrado@fresno.gov.

Continue



Exhibit B-4

Unmet Transit Needs Survey in Other Languages, FY2026-27

For the online survey, translations were offered in a large number of languages through integration with Google Translate. Survey respondents would select their language of choice through a drop-down menu at the very top of the browser screen. Once selected, the web page would load in the language selected.



ENCUESTA: Necesidades de transporte público no satisfechas en 2026

¡Bienvenido!

La evaluación de Necesidades de Transporte No Satisfechas (UTN, por sus siglas en inglés) se realiza anualmente para identificar necesidades de transporte público que son razonablemente satisfechas y que aún no se cubren con los servicios de transporte público existentes que cuentan con la financiación disponible. La participación y los comentarios del público son fundamentales en el proceso de la UTN. En colaboración con los proveedores de transporte locales, Fresno COG está recabando comentarios del público sobre las Necesidades de Transporte No Satisfechas del Condado de Fresno. El plazo para enviar todos los comentarios finaliza el 3 de abril de 2026 a las 17:00 h y se tendrán en cuenta para la evaluación de la UTN de 2026.

Exhibit B-5

Unmet Transit Needs Assessment Mailing List Summary, FY2026-27

Fresno COG maintains a list of stakeholders interested in the Unmet Transit Needs process. These stakeholders include private citizens, local tribal governments, government agencies, non-profit organizations, and elected officials.

Notification of the Unmet Transit Needs process is made via US mail in mid-to-late January and consists of the flyers in exhibits B1 and B2 above. Prior to sending the flyers, FRESNO COG staff and members of SSTAC review the list with names, agencies, and contact information, edited, added, and deleted from the list, keeping the list current to the best of their abilities.

Every other year, Fresno COG staff will contact the names and agencies on this list to keep the list fresh. In the interest of space and protecting the privacy of the individuals involved in the Unmet Transit Needs process, the mailing list is not included here.

The full Unmet Transit Needs mailing list for Fiscal Year 2026-27 is available upon request via email to Harold.sobrado@fresno.gov or by phone to (559) 621-1532.

In the current cycle of the Unmet Transit Needs process, there were 430 names, tribes, organizations, and agencies on the list that received notification. The smallest groups were local tribal governments with all six tribes receiving notification, followed by private citizens. This latter group numbered less than ten.

The remaining stakeholders consisted of elected officials, non-profit organizations, and government agencies. Some of the elected officials on this list include:

- The six members of the Fresno County Board of Supervisors
- The mayors of the sixteen incorporated cities in Fresno County
- Council members of each of the sixteen incorporated cities in Fresno County
- The US Senator and Federal and State House and Senate Representatives

The non-profit organizations on the list includes social service providers, and legal advocates, including:

- National Action Network
- Central California Legal Services, Inc.
- Clinica Sierra Vista
- California Rural Legal Assistance







There are many government agencies represented on the list. Some of the agencies on the list include:

- Fresno County Department of Social Services
- California, Department of Transportation (Caltrans)
- Many departments within Fresno County, The City of Fresno, and other cities within Fresno County.

Exhibit B-6

Unmet Transit Needs Social Media Posts in English and Spanish, FY2026-27

Fresno COG prepared and published several social media posts in English and Spanish for its social media properties and those of Fresno Area Express and Clovis Transit.

Social Media posts in English	Social Media posts in Spanish
<p>FRESNO COUNTY UNMET TRANSIT NEEDS PUBLIC COMMENTS PROCESS</p> <p>Tell us about your unmet public transit needs!</p> <p>TAKE OUR ONLINE SURVEY!</p> 	<p>PROCESO DE NECESIDADES DE TRÁNSITO INSATISFECHAS DEL CONDADO DE FRESNO</p> <p>¡Cuéntenos sobre sus necesidades de tránsito insatisfechas!</p> <p>TOMA NUESTRO ENCUESTA EN LÍNEA!</p> 
<p>FRESNO COUNTY UNMET TRANSIT NEEDS PUBLIC COMMENTS PROCESS</p> <p>Tell us about your unmet public transit needs!</p> <p>TAKE OUR ONLINE SURVEY!</p>  	<p>PROCESO DE NECESIDADES DE TRÁNSITO INSATISFECHAS DEL CONDADO DE FRESNO</p> <p>¡Cuéntenos sobre sus necesidades de tránsito insatisfechas!</p> <p>TOMA NUESTRO ENCUESTA EN LÍNEA!</p>  

**FRESNO COUNTY
UNMET TRANSIT NEEDS
PUBLIC COMMENTS PROCESS**

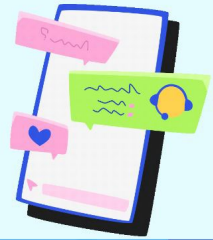
Tell us about your unmet public transit needs!



**CALL OR TEXT
YOUR COMMENTS!**

**PROCESO DE NECESIDADES
DE TRÁNSITO INSATISFECHAS
DEL CONDADO DE FRESNO**

¡Cuéntenos sobre sus necesidades de tránsito insatisfechas!



**LLAMA O MENSAJE DE TEXTO
¡TUS COMENTARIOS!**

**PROCESO DE NECESIDADES
DE TRÁNSITO INSATISFECHAS
DEL CONDADO DE FRESNO**

¡Cuéntenos sobre sus necesidades de tránsito insatisfechas!



**TOMA NUESTRO
ENCUESTA EN LÍNEA!**

**PROCESO DE NECESIDADES
DE TRÁNSITO INSATISFECHAS
DEL CONDADO DE FRESNO**

¡Cuéntenos sobre sus necesidades de tránsito insatisfechas!



**CORREO ELECTRÓNICO
¡TUS COMENTARIOS!**

Exhibit C

Public Outreach Meeting Attendance Lists, In-Person and Virtual, FY2026-27

IN-PERSON MEETING #1 – RURAL EASTSIDE FRESNO COUNTY, REEDLEY THURSDAY, FEBRUARY 19, 2026, 5:00 PM Presence at the FCOG RTP/SCS Workshop at the Reedley Planning Commission Meeting 845 G Street, Reedley, CA 93654		
NAME	ADDRESS OR AGENCY	PHONE
Harold Sobrado	Fresno COG and FAX	(559) 621-1532
Paul Herman	Fresno COG	
Santosh Bhattari	Fresno COG	
Nick Chin	Clovis Transit	
Rosemary Luzania	Reedley Planning Commission	
Patrick Turner	Reedley Planning Commission	
June Bracamontes	Reedley Planning Commission	
Rob Ledington	Reedley Planning Commission	
Harry Valencia	Reedley Planning Commission	

IN-PERSON MEETING #2 – RURAL WESTSIDE FRESNO COUNTY, KERMAN TUESDAY, FEBRUARY 24, 2026, 6:00 PM FCOG RTP/SCS Meeting at the Kerman Community Teen Center 15101 W. Kearney Blvd., Kerman, CA 93630		
NAME	ADDRESS OR AGENCY	PHONE
Harold Sobrado	FCOG and FAX	(559) 621-1532
Brenda Thomas	Fresno COG	
Janelle Del Campo	FCRTA	
Nick Chin	Clovis Transit	
Paul Herman	Fresno COG	
Santosh Bhattari	Fresno COG	
John Janson	City of Kerman	

VIRTUAL MEETING #1 SATURDAY, MARCH 3, 2026, 5:30 PM Via ZOOM		
NAME	ADDRESS OR AGENCY	PHONE
Harold Sobrado	Fresno COG and FAX	(559) 621-1532

IN-PERSON MEETING #3 – CITY OF FRESNO #1 TUESDAY, MARCH 3, 2026, 5:30 PM Betty Rodriguez Community Library Meeting Room 3040 N. Cedar Ave., Fresno, CA 93703		
NAME	ADDRESS OR AGENCY	PHONE
Harold Sobrado	Fresno COG and FAX	(559) 621-1532
Ofelia Obundez	Clovis Transit	

IN-PERSON MEETING #4 - CITY OF FRESNO #2
 WEDNESDAY, MARCH 4, 2026, 5:30 PM
 Sunnyside Regional Library Community Center Conference Room
 5566 E. Kings Canyon Road, Fresno CA 93727

NAME	ADDRESS OR AGENCY	PHONE
Harold Sobrado	Fresno COG and FAX	(559) 621-1532
Ofelia Obundez	Clovis Transit	
Greg Barfield	FAX	

IN-PERSON MEETING #5 – CITY OF CLOVIS
 THURSDAY, MARCH 5, 2026, at 5:30 PM
 City of Clovis, Clovis Transit Center
 785 3rd Street, Clovis, CA 93612

NAME	ADDRESS OR AGENCY	PHONE
Jeff Long	Fresno COG and FAX	
Nick Chin	Clovis Transit	

DRAFT

Exhibit D-1

Public Noticing of the FY2026-27 for the Unmet Transit Needs Assessment Public Hearing Order and Ad in English

4/29/26, 3:06 PM

Details

ORDER DETAILS

Order Number: **IPL0336241**
Order Status: Submitted
Classification: Legals & Public Notic...
Package: FRS - Legal Ads
Site: fresno
Final Cost: \$489.85
Referral Code: **Fresno COG FY2026-...**
Payment Type: Account Billed
User ID: IPL0020228

PREVIEW FOR AD NUMBER

IPL03362410

3.22inches x 2.41inches

PUBLIC NOTICE

PUBLIC NOTICE

The Fresno Council of Governments (COG) will hold a public hearing for the annual Unmet Transit Needs Process beginning at 5:30 p.m. on Tuesday, June 2, 2026, at the Fresno Council of Governments, Sequoia room, 2035 Tulare St., Suite 201 Fresno, California or by Zoom. Visit www.fresnocog.org for more information and a link to join online.

Fresno COG staff will receive comments at the Unmet Transit Needs public hearing on public transportation needs within the Fresno County region that are reasonable to meet during the 2026-27 fiscal year. In addition to this public hearing, COG conducted outreach meetings throughout the County. Transit agencies involved in this process include Fresno Area Express, Fresno County Rural Transit Agency, Clovis Transit, and the Fresno Economic Opportunities Commission. For Additional information, please visit www.fresnocog.org or contact Todd Sobrado, Fresno Area Express at (559) 521-1532.

Individuals with disability may call Fresno COG (with 3-working-day advance notice) to request auxiliary aids necessary to participate in the public hearing. Translation services are available (with 3-working-day advance notice) to participants speaking any language with available translation services.

/s/ ROBERT PHIPPS, Executive Director Fresno Council of Governments
W00000000

Publication Dates

ACCOUNT INFORMATION

FRESNO COUNCIL OF GOVERNMENTS IP
2035 TULARE ST, STE 201
FRESNO, CA 93722
559-233-4148
bthomas@fresnocog.org
FRESNO COUNCIL OF GOVERNMENTS

TRANSACTION REPORT

Date: April 29, 2026 4:04:3...
Amount: \$489.85

SCHEDULE FOR AD NUMBER IPL03362410

May 1, 2026

The Fresno Bee Print Publication



i-Publish® AdPortal: 3.0.69
©2026 iPublish Media Solutions, LLC

<https://placelgal.mcclatchy.com/legals/fresno/home/viewItem.html?id=312648>

Terms and Conditions

1/2

Exhibit D-2

Public Noticing of the FY 2026-27 Unmet Transit Needs Assessment Public Hearing Order and Ad in Spanish

4/29/26, 3:16 PM

Adportal Self Service Advertising Confirmation

THANK YOU for your legal submission!

Your legal has been submitted for publication. Below is a confirmation of your legal placement. You will also receive an email confirmation.

ORDER DETAILS

Order Number: **IPL0336247**
Order Status: Submitted
Classification: Legals & Public Notic...
Package: FRS - Legal Ads
Site: fresno
Final Cost: \$563.73
Payment Type: Account Billed
User ID: IPL0020228

PREVIEW FOR AD NUMBER

IPL03362470

3.22inches x 2.81inches

PUBLIC NOTICE

NOTICIA PUBLICA

El Consejo de Gobiernos de Fresno (COG) celebrará una audiencia pública para el proceso anual de Necesidades de Transporte Insatisfechas, la cual comenzará a las 5:30 p. m. del martes 2 de junio de 2026, en las instalaciones del Consejo de Gobiernos de Fresno (Sala Sequoia), ubicadas en 2035 Tulare St., Suite 201, Fresno, California, o a través de Zoom. Visite www.fresnocog.org para obtener más información y el enlace para unirse en línea.

El personal del Fresno COG recibirá comentarios en la audiencia pública sobre Necesidades de Transporte No Satisfechas, referentes a las necesidades de transporte público dentro de la región del Condado de Fresno que sea razonable satisfacer durante el año fiscal 2026-27. Además de esta audiencia pública, Fresno COG a llevado a cabo reuniones de alcance en todo el condado. Las agencias de tránsito involucradas en este proceso incluyen Fresno Area Express, la Agencia de Tránsito Rural de Fresno, Tránsito de Clovis, y la Comisión de Oportunidades Económicas de Fresno. Para obtener información adicional, visite www.fresnocog.org o comuníquese con Todd Sobrado, Fresno Area Express al número (559) 621-1532.

Las personas con discapacidades pueden llamar a Fresno COG (con un preaviso de 3 días laborables) para solicitar las ayudas auxiliares necesarias para participar en la audiencia pública. Los servicios de traducción están disponibles (con un preaviso de 3 días laborables) a los participantes que hablan cualquier idioma con los servicios de traducción profesional y disponible.

/s/ ROBERT PHIPPS, Director Ejecutivo Consejo de Gobiernos de Fresno
IPL0336247
May 1 2026

ACCOUNT INFORMATION

FRESNO COUNCIL OF GOVERNMENTS IP
2035 TULARE ST, STE 201
FRESNO, CA 93722
559-233-4148
bthomas@fresnocog.org
FRESNO COUNCIL OF GOVERNMENTS

<< Click here to print a printer friendly version

>>

TRANSACTION REPORT

Date: April 29, 2026 4:15:3...
Amount: \$563.73

SCHEDULE FOR AD NUMBER IPL03362470

<https://placelgal.mclatchy.com/legals/fresno/home/confirmation.html?id=312657&returnto=>

1/2